

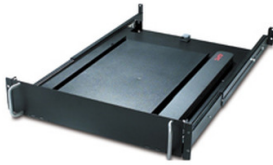
Product data sheet

Specifications



19" Rotating Keyboard Drawer Black

AR8127BLK



Overview

Presentation	Pull-out drawer design allows for easy access and out of the way storage for all standard 19 inch keyboards. Rotating keyboard tray permits the user to swivel into working position.
Lead time	Usually in Stock

Main

Product or Component Type	Drawer
Number of rack unit	2U
Number of cables	1
Provided equipment	Cable management clips Installation guide Keyboard not included Mounting Hardware Mouse pad Wrist Rest

Physical

Color	Black
Height	3.5 in (89 mm)
Width	17.5 in (445 mm)
Depth	28.0 in (711 mm)
Net Weight	23.04 lb(US) (10.45 kg)
Mounting Location	Front
Mounting preference	Middle
Mounting Mode	Rack-mounted

Conformance

Standards	EIA-310D
------------------	----------

Ordering and shipping details

GTIN	731304015932
-------------	--------------

Packing Units

Unit Type of Package 1	PCE
Nbr. of units in pkg.	1
Package 1 Height	8.5 in (21.6 cm)

Price is "List Price" and may be subject to a trade discount – check with your local distributor or retailer for actual price.

Package 1 Width	36.5 in (92.7 cm)
Package 1 Length	25.5 in (64.8 cm)
Package weight(Lbs)	36.57 lb(US) (16.59 kg)

Contractual warranty

Warranty (in months)	24
-----------------------------	----



Environmental Data

Schneider Electric aims to achieve Net Zero status by 2050 through supply chain partnerships, lower impact materials, and circularity via our ongoing “Use Better, Use Longer, Use Again” campaign to extend product lifetimes and recyclability.

[Environmental Data explained >](#)

[How we assess product sustainability >](#)



Environmental footprint

Total lifecycle Carbon footprint	58 kg CO2 eq.
Carbon footprint of the manufacturing phase [A1 to A3]	56 kg CO2 eq.
Carbon footprint of the distribution phase [A4]	1 kg CO2 eq.
Carbon footprint of the installation phase [A5]	0 kg CO2 eq.
Carbon footprint of the use phase [B2, B3, B4, B6]	0 kg CO2 eq.
Carbon footprint of the end-of-life phase [C1 to C4]	1 kg CO2 eq.

Use Better



Materials and Substances

Packaging made with recycled cardboard	No
Packaging without single use plastic	No
EU RoHS Directive	Compliant
REACH Regulation	Free of Substances of Very High Concern above the threshold

Use Longer



Lifetime extension

Repair	No
--------	----

Use Again



Repack and remanufacture

Recyclability potential, in %	95
Take-back	No
WEEE Label	 The product must be disposed on European Union markets following specific waste collection and never end up in rubbish bins.

Image of product / Alternate images

Alternative

