

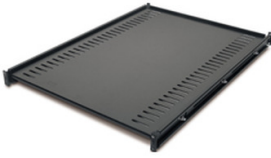
Product data sheet

Specifications



Fixed Shelf - 250lbs/114kg, Black

AR8122BLK



Overview

Presentation	Fixed shelf to enable the mounting of tower units, monitors, and other equipment into the rack environment.
Lead time	Usually in Stock

Main

Product or Component Type	Shelf
Number of rack unit	1U
Number of cables	1
Provided equipment	Installation guide Mounting Hardware

Physical

Color	Black
Height	1.7 in (44 mm)
Width	18.5 in (470 mm)
Depth	26.0 in (660 mm)
Net Weight	18.03 lb(US) (8.18 kg)
Mounting Location	Front
Mounting preference	No preference
Mounting Mode	Rack-mounted
Maximum Mounting Depth	32.5 in (825.5 mm)
Minimum Mounting Depth	26.5 in (673.1 mm)
Permanent permissible load	250 lb(US) (113.4 kg) static

Conformance

Standards	EIA-310D
-----------	----------

Ordering and shipping details

GTIN	731304107842
------	--------------

Packing Units

Unit Type of Package 1	PCE
Nbr. of units in pkg.	1
Package 1 Height	30.5 in (77.5 cm)

Price is "List Price" and may be subject to a trade discount – check with your local distributor or retailer for actual price.

Package 1 Width	22.7 in (57.6 cm)
Package 1 Length	3.5 in (8.9 cm)
Package weight(Lbs)	23.012 lb(US) (10.438 kg)

Contractual warranty

Warranty (in months)	24
-----------------------------	----



Environmental Data

Schneider Electric aims to achieve Net Zero status by 2050 through supply chain partnerships, lower impact materials, and circularity via our ongoing “Use Better, Use Longer, Use Again” campaign to extend product lifetimes and recyclability.

[Environmental Data explained >](#)

[How we assess product sustainability >](#)



Environmental footprint

Total lifecycle Carbon footprint	37 kg CO2 eq.
Carbon footprint of the manufacturing phase [A1 to A3]	35 kg CO2 eq.
Carbon footprint of the distribution phase [A4]	0.9 kg CO2 eq.
Carbon footprint of the installation phase [A5]	0 kg CO2 eq.
Carbon footprint of the use phase [B2, B3, B4, B6]	0 kg CO2 eq.
Carbon footprint of the end-of-life phase [C1 to C4]	0.8 kg CO2 eq.

Use Better



Materials and Substances

Packaging made with recycled cardboard	No
Packaging without single use plastic	No
EU RoHS Directive	Compliant
REACH Regulation	Free of Substances of Very High Concern above the threshold

Use Longer



Lifetime extension

Repair	No
--------	----

Use Again



Repack and remanufacture

Recyclability potential, in %	95
Circularity Profile	End of Life Information
Take-back	No
WEEE Label	 The product must be disposed on European Union markets following specific waste collection and never end up in rubbish bins.

Image of product / Alternate images

Alternative

