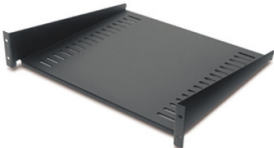


Product data sheet

Specifications

Fixed Shelf 50lbs/22.7kg Black



AR8105BLK

Overview

Presentation	Cantilever fixed shelf to enable the mounting of a monitor or other equipment into the rack environment.
Lead time	Usually in Stock

Main

Number of rack unit	2U
Number of cables	1
Provided equipment	Installation guide Mounting Hardware

Physical

Color	Black
Height	3.50 in (8.9 cm)
Width	19.02 in (48.3 cm)
Depth	15.98 in (40.6 cm)
Net Weight	5.004 lb(US) (2.27 kg)
Mounting Location	Front
Mounting preference	No preference
Mounting Mode	Rack-mounted
Maximum Mounting Depth	16.00 in (40.64 cm)
minimum mounting depth	16.00 in (40.64 cm)
Permanent permissible load	50 lb(US) (22.7 kg) static

Conformance

Standards	EIA-310D
-----------	----------

Ordering and shipping details

GTIN	731304107859
------	--------------

Packing Units

Unit Type of Package 1	PCE
Number of Units in Package 1	1
Package 1 Height	4.02 in (10.2 cm)
Package 1 Width	22.52 in (57.2 cm)

Price is "List Price" and may be subject to a trade discount – check with your local distributor or retailer for actual price.

Disclaimer: This documentation is not intended as a substitute for and is not to be used for determining suitability or reliability of these products for specific user applications

Package 1 Length	17.52 in (44.5 cm)
Package 1 Weight	9.394 lb(US) (4.261 kg)

Contractual warranty

Warranty	2 years repair or replace
----------	---------------------------

Environmental Data

Schneider Electric aims to achieve Net Zero status by 2050 through supply chain partnerships, lower impact materials, and circularity via our ongoing “Use Better, Use Longer, Use Again” campaign to extend product lifetimes and recyclability.

[Environmental Data explained >](#)

[How we assess product sustainability >](#)

Environmental footprint	
Carbon footprint (kg CO2 eq, Total Life cycle)	13

Use Better	
Materials and Substances	
[EU RoHS Directive](#)	Pro-active compliance (Product out of EU RoHS legal scope)
REACH Regulation	[REACH Declaration](#)
Use Again	
Repack and remanufacture	
Circularity Profile	[End of Life Information](#)
Take-back	Yes