

PHILIPS

EVNIA



Full HD gaming
monitor

Fast IPS Gaming monitor

Evnia 3000

24 (23.8" / 60.5 cm diag.)

1920 x 1080 (Full HD)



24M2N3200PF

Broaden your gaming horizon

This 24-inch Fast IPS monitor brings sharp visuals to gaming. With its overclockable 260Hz refresh rate and 0.3ms Smart MBR, you can expect clear visuals and a high-quality all-around gaming experience.

Built for fast action

- Ultra-fast 260Hz refresh rate for virtually lag-free gaming

Features designed for gamers needs

- Stark ShadowBoost: for enhancing visibility in dark scenes
- Evnia Precision Center: Maximize Your Gaming Experience
- SmartImage game mode optimized for gamers
- LowBlue mode and Flicker-free easy-on-the eyes viewing
- Smart Crosshair: for better aim and more fun
- Smart MBR Sync: for smooth yet dynamic gameplay

Built for fast action

- 0.3 ms ultra-fast speed for crisp image and smooth gameplay
- Low input lag reduces time delay between devices to monitor

Immersive visuals

- 16:9 Full HD display for crisp detailed images
- High Dynamic Range (HDR) for more lifelike colorful visuals

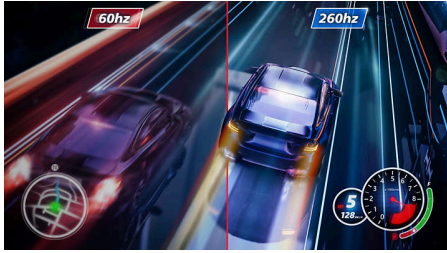
Fast IPS Gaming monitor

Full HD gaming monitor

24M2N3200PF/75

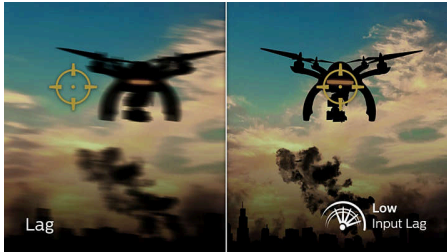
Highlights

Overclockable 260Hz refresh rate



While playing the most intense engaging action-oriented games, Philips Evnia offers an overclockable 260 Hz refresh rate that enhances an ultra-smooth, lag-free gaming experience. Especially for fast-paced games like FPS and racing games, it gives a superior motion and clarity visuals. You will experience deeper immersion and feeling alive in game.

Low input lag



Input lag is the amount of time that elapses between performing an action with connected devices and seeing the result on screen. Low input lag reduces the time delay between entering a command from your devices to monitor, greatly improve on playing twitch-sensitive video games, particularly important to whom plays fast-paced, competitive games.

0.3 ms Smart MBR fast response



Philips display with 0.3 ms Smart MBR effectively eliminates smearing and motion blur, delivers shaper and precise visuals to enhance gaming experience. Fast-moving action and dramatic

transitions will be rendered smoothly. Best choice for playing thrilling and twitch-sensitive games.

High Dynamic Range (HDR)



High Dynamic Range delivers a dramatically different visual experience. With astonishing brightness, incomparable contrast and captivating color, images come to life with much greater brightness while also featuring much deeper, more nuanced darks. It renders a fuller palette of rich new colors never before seen on display, giving you a visual experience that engages your senses and inspires emotions.

16:9 Full HD display



Picture quality matters. Regular displays deliver quality, but you expect more. This display features enhanced Full HD 1920 x 1080 resolution. With Full HD for crisp detail paired with high brightness, incredible contrast and realistic colors expect a true to life picture.

SmartContrast



SmartContrast is a Philips technology that analyzes the contents you are displaying, automatically adjusting colors and controlling

backlight intensity to dynamically enhance contrast for the best digital images and videos or when playing games where dark hues are displayed. When Economy mode is selected, contrast is adjusted and backlighting fine-tuned for just-right display of everyday office applications and lower power consumption.

LowBlue mode & Flicker-free



Our LowBlue Mode and Flicker-free technology have been developed to reduce eye strain and fatigue often caused by long hours in front of a monitor.

SmartImage Game mode



The new Philips gaming display has quick access OSD fine tuned for gamers, offering you multiple options. "FPS" mode (First person shooting) improves dark themes in games, allowing you to see hidden objects in dark areas. "Racing" mode adapts display with fastest response time, high color, along with image adjustments. "RTS" mode (Real time strategy) has a special SmartFrame mode which enables highlighting of specific area and allows for size and image adjustments. Gamer 1 and Gamer 2 enable you to save personal customized settings based on different games, ensuring best performance.



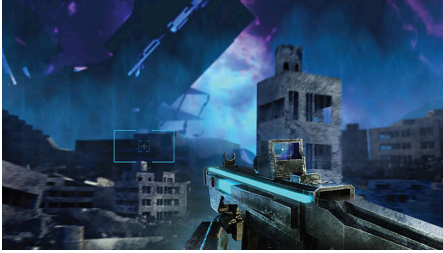
Fast IPS Gaming monitor

Full HD gaming monitor

24M2N3200PF/75

Highlights

Smart Crosshair



Color of Crosshair is set by default. When Smart Crosshair is on, the color will change as complementary color to the background color. Smart Crosshair enhances the accuracy of aiming so you can spot the enemies more easily.

Stark ShadowBoost



This feature enhances dark scenes without overexposing lightened areas. The Stark Shadowboost feature has three selectable levels

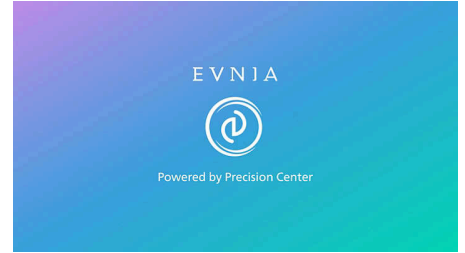
that offer texturized images with better color saturation with higher contrast so you can see better in both light and dark environments. In addition, this feature helps you fine-tune your sight so that enemies get exposed more quickly when gaming.

Smart MBR Sync



This feature pairs MPRT together with Adaptive Sync technology; which effectively eliminates motion blur and ghosting on screen. Sharp and speedy gaming visuals are guaranteed, even at high frame rates.

Evnia Precision Center



Evnia Precision Center is an easy-to-use software designed to optimize and personalize your Evnia monitor. Whether you're a casual or competitive gamer, it offers a wide range of customization options to match your unique gaming style. With intuitive controls and seamless navigation, Evnia Precision Center gives you full control, providing everything you need to elevate your gaming to the next level—right at your fingertips.

Fast IPS Gaming monitor

Full HD gaming monitor

24M2N3200PF/75

Specifications

Picture/Display

Panel Size: 23.8"/60.5 cm
Aspect ratio: 16:9
LCD panel type: Fast IPS
Backlight type: W-LED system
Pixel pitch: 0.2745 x 0.2745mm
Brightness: 300 cd/m²
Display colors: 16.7 M
Color gamut (typical): Adobe RGB 86%; DCI-P3:87%, sRGB: 109%, NTSC 99% *
Contrast ratio (typical): 1000:1
SmartContrast: Mega Infinity DCR
Response time (typical): 1 ms (Gray to Gray)*
Viewing angle: 178° (H) / 178° (V), @ C/R > 10
Picture enhancement: SmartImage game
Maximum resolution: 1920x1080 @ 260Hz (Overclock*, HDMI/DP)
Effective viewing area: 527.04(H)x296.46(V)mm
Scanning Frequency: 30-290kHz(H)/ 48-260Hz(V) (Overclock)*
sRGB
Flicker-free
Pixel Density: 93 PPI
LowBlue Mode
Display Screen Coating: Anti-Glare, 3H, Haze 25%
Low Input Lag
Adaptive sync
HDR: HDR 10 supported
Smart MBR: 0.3ms*
Smart MBR Sync
Smart Crosshair
Shadow Boost
SoftBlue technology: Yes*

Connectivity

Signal Input: HDMI 2.0 x 1, DisplayPort 1.4 x 1
Sync Input: Separate Sync
Audio (In/Out): Headphone out
HDCP: HDCP 1.4 (HDMI / DP), HDCP 2.2 (HDMI / DP)

Convenience

Plug & Play Compatibility: DDC/CI, Mac OS, sRGB, Windows 11 / 10
User convenience: Power On/Off, Menu/OK, Input/Up, Game Settings/Down, SmartImage game/Back
OSD Languages: Brazil Portuguese, Czech, Dutch, English, Finnish, French, German, Greek, Hungarian, Italian, Japanese, Korean, Polish, Portuguese, Russian, Spanish, Simplified Chinese, Swedish, Turkish, Traditional Chinese, Ukrainian
Other convenience: Kensington lock, VESA mount (100x100mm), LowBlue Mode
Control software: Evnia Precision Center

Stand

Tilt: -5/20 degree

Power

Power supply: Internal, 100-240VAC, 50-60Hz
Off mode: 0.3 W (typ.)
On mode: 18.3 W (typ.)
Standby mode: 0.5 W (typ.)
Power LED indicator: Operation - White, Standby mode- White (blinking)

Dimensions

Packaging in mm (WxHxD): 690 x 420 x 124 mm
Product without stand (mm): 544 x 321 x 50 mm
Product with stand(max height): 544 x 433 x 216 mm

Weight

Product with packaging (kg): 5.27 kg
Product with stand (kg): 3.07 kg
Product without stand (kg): 2.52 kg

Operating conditions

Altitude: Operation: +12,000ft (3,658m), Non-operation: +40,000ft (12,192m)
Temperature range (operation): 0°C to 40 °C
MTBF: 50,000 (Excluded backlight) hour(s)
Relative humidity: 20%-80 %
Temperature range (storage): -20°C to 60 °C

Sustainability

Environmental and energy: RoHS
Recyclable packaging material: 100 %
Post consumer recycled plastics: 85%*

Compliance and standards

Regulatory Approvals: CB, CE Mark, MEPS, PSB, CEL, CCC, CECP, BSMI, UKCA, EMF, FCC, ICES-003

Cabinet

Color: Charcoal
Finish: Textured

© 2025 Koninklijke Philips N.V.
All Rights reserved.

Issue date 2025-12-15
Version: 4.4.1

Specifications are subject to change without notice. Trademarks are the property of Koninklijke Philips N.V. or their respective owners.

EAN: 87 21038 00612 4

www.philips.com



- * "IPS" word mark / trademark and related patents on technologies belong to their respective owners.
- * The maximum resolution works for either HDMI input or DP input.
- * For best output performance, please always ensure that your graphic card is capable of achieving the maximum resolution and refresh rate of this Philips display.
- * Response time value equal to SmartResponse
- * Smart MBR is to adjust brightness for blur reduction, so cannot adjust brightness while Smart MBR is turned on. To reduce motion blur, LED backlight will strobe synchronously with screen refresh, which may cause noticeable brightness change.
- * Smart MBR is gaming-optimized mode. Turn on Smart MBR may cause noticeable screen flickering. It is recommended to turn off when you are not using the gaming function.
- * Adobe RGB and DCI-P3 Coverage based on CIE1976, sRGB Area based on CIE1931, NTSC Area based on CIE1976.
- * This monitor strives for sustainability: the monitor's chassis is made up of 85% post-consumer recycled plastic.
- * Low blue light compliance: The ratio of display emission light in the range from 415 - 455 nm to the display emission of 400 - 500 nm shall be less than 50%.
- * The Overclock function increases the native refresh rate, however, it does have some associated risks along with it. If the screen is displayed abnormally after rebooting, please switch off the Overclock setting located in the monitor's OSD menu.
- * The monitor may look different from feature images.
- * The products and accessories listed on this leaflet may differ by country and region.