

PHILIPS

EVNIA



Full HD gaming
monitor

Gaming monitor

Evnia 3000

31.5" (80cm)

1920 x 1080 (Full HD)



32M2C3200WL

Broaden your gaming horizon

This 32-inch VA monitor brings sharp visuals to gaming. With its overclockable 260Hz refresh rate and 0.3ms Smart MBR, you can expect clear visuals and a high-quality, all-around gaming experience.

Features designed for gamers needs

- Evnia Precision Center: Maximize Your Gaming Experience
- ShadowBoost: for bringing dark scenes to life.
- SmartImage game mode optimized for gamers
- LowBlue mode and Flicker-free easy-on-the eyes viewing
- Smart Crosshair: for better aim and more fun
- Smart MBR Sync: for smooth yet dynamic gameplay

Built for fast action

- 0.3 ms ultra-fast speed for crisp image and smooth gameplay
- Ultra-fast 260Hz refresh rate for virtually lag-free gaming
- Low input lag reduces time delay between devices to monitor

Immersive visuals

- 16:9 Full HD display for crisp detailed images
- High Dynamic Range (HDR) for more lifelike colorful visuals
- SmartContrast for rich black details

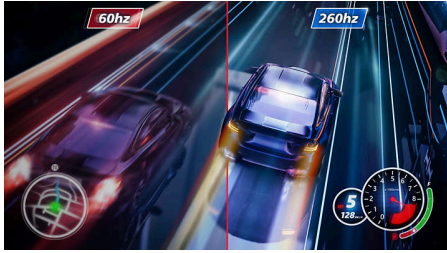
Gaming monitor

Full HD gaming monitor

32M2C3200WL/75

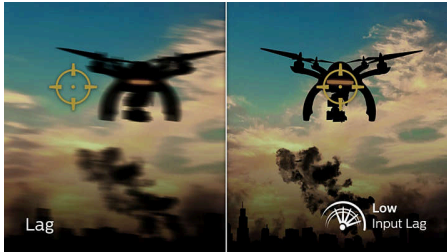
Highlights

Overclockable 260Hz refresh rate



While playing the most intense engaging action-oriented games, Philips Evnia offers an overclockable 260 Hz refresh rate that enhances an ultra-smooth, lag-free gaming experience. Especially for fast-paced games like FPS and racing games, it gives a superior motion and clarity visuals. You will experience deeper immersion and feeling alive in game.

Low input lag



Input lag is the amount of time that elapses between performing an action with connected devices and seeing the result on screen. Low input lag reduces the time delay between entering a command from your devices to monitor, greatly improve on playing twitch-sensitive video games, particularly important to whom plays fast-paced, competitive games.

0.3 ms Smart MBR fast response



Philips display with 0.3 ms Smart MBR effectively eliminates smearing and motion blur, delivers shaper and precise visuals to enhance gaming experience. Fast-moving action and dramatic

transitions will be rendered smoothly. Best choice for playing thrilling and twitch-sensitive games.

16:9 Full HD display



Picture quality matters. Regular displays deliver quality, but you expect more. This display features enhanced Full HD 1920 x 1080 resolution. With Full HD for crisp detail paired with high brightness, incredible contrast and realistic colors expect a true to life picture.

SmartContrast



SmartContrast is a Philips technology that analyzes the contents you are displaying, automatically adjusting colors and controlling backlight intensity to dynamically enhance contrast for the best digital images and videos or when playing games where dark hues are displayed. When Economy mode is selected, contrast is adjusted and backlighting fine-tuned for just-right display of everyday office applications and lower power consumption.

High Dynamic Range (HDR)



High Dynamic Range delivers a dramatically different visual experience. With astonishing brightness, incomparable contrast and

captivating color, images come to life with much greater brightness while also featuring much deeper, more nuanced darks. It renders a fuller palette of rich new colors never before seen on display, giving you a visual experience that engages your senses and inspires emotions.

LowBlue mode & Flicker-free



Our LowBlue Mode and Flicker-free technology have been developed to reduce eye strain and fatigue often caused by long hours in front of a monitor.

SmartImage Game mode



The new Philips gaming display has quick access OSD fine tuned for gamers, offering you multiple options. "FPS" mode (First person shooting) improves dark themes in games, allowing you to see hidden objects in dark areas. "Racing" mode adapts display with fastest response time, high color, along with image adjustments. "RTS" mode (Real time strategy) has a special SmartFrame mode which enables highlighting of specific area and allows for size and image adjustments. Gamer 1 and Gamer 2 enable you to save personal customized settings based on different games, ensuring best performance.



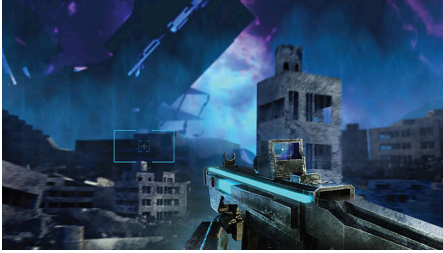
Gaming monitor

Full HD gaming monitor

32M2C3200WL/75

Highlights

Smart Crosshair



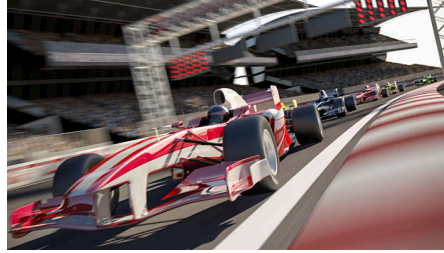
Color of Crosshair is set by default. When Smart Crosshair is on, the color will change as complementary color to the background color. Smart Crosshair enhances the accuracy of aiming so you can spot the enemies more easily.

ShadowBoost



This feature enhances dark scenes in a linear fashion. The ShadowBoost feature has three selectable levels that enhance overall brightness and ultimately provide beautiful picture quality with high contrast.

Smart MBR Sync



This feature pairs MPRT together with Adaptive Sync technology; which effectively eliminates motion blur and ghosting on screen. Sharp and speedy gaming visuals are guaranteed, even at high frame rates.

Evnia Precision Center



Evnia Precision Center is an easy-to-use software designed to optimize and personalize your Evnia monitor. Whether you're a casual or competitive gamer, it offers a wide range of customization options to match your unique gaming style. With intuitive controls and seamless navigation, Evnia

Precision Center gives you full control, providing everything you need to elevate your gaming to the next level—right at your fingertips.

Gaming monitor

Full HD gaming monitor

32M2C3200WL/75

Specifications

Picture/Display

Panel Size: 31.5 inch / 80 cm

Aspect ratio: 16:9

LCD panel type: Fast VA

Backlight type: W-LED system

Pixel pitch: 0.36375 x 0.36375 mm

Brightness: 300 cd/m²

Display colors: 1.07B (10bits can be achieved through DP&HDMI@FHD 240Hz)

Color gamut (typical): Adobe RGB 87%; DCI-P3: 86%, sRGB: 117%, NTSC 97%*

Contrast ratio (typical): 3500:1

SmartContrast: Mega Infinity DCR

Response time (typical): 1 ms (Gray to Gray)*

Viewing angle: 178° (H) / 178° (V), @ C/R > 10

Picture enhancement: SmartImage game

Maximum resolution: HDMI/DP:

1920x1080@260Hz (Overclock)*

Effective viewing area: 698.4(H)x392.85(V)mm at a 1500R curvature*

Scanning Frequency: HDMI/DP: 30 - 390 kHz (H) / 48 - 260 Hz (V)(Overclock)*

sRGB

Delta E: < 2 (sRGB)

Flicker-free

Pixel Density: 93.24 PPI

Display Screen Coating: Anti-Glare, 3H, Haze 25%

SmartUniformity: 93~105%

Low Input Lag

EasyRead

Adaptive sync

HDR: HDR 10 supported

Smart MBR Sync

Smart MBR: 0.3ms*

Smart Crosshair

Shadow Boost

SoftBlue technology: Yes*

Connectivity

Signal Input: HDMI 2.0 x 2, DisplayPort 1.4 x 1

Audio (In/Out): Audio out

HDCP: HDCP 1.4 (HDMI / DisplayPort), HDCP 2.2 (HDMI / DisplayPort)

Convenience

Plug & Play Compatibility: DDC/CI, Mac OS X, sRGB, Windows 11 / 10

User convenience: Power On/Off, Menu/OK, Input/Up, Game Settings/Down, SmartImage game/Back

OSD Languages: Brazil Portuguese, Czech, Dutch, English, Finnish, French, German, Greek, Hungarian, Italian, Japanese, Korean, Polish, Portuguese, Russian, Spanish, Simplified Chinese, Swedish, Turkish, Traditional Chinese, Ukrainian

Other convenience: Kensington lock, VESA mount (100x100mm), LowBlue Mode

Control software: Evnia Precision Center

Stand

Tilt: -5/20 degree

Power

Power supply: Internal, 100-240VAC, 50-60Hz

Off mode: 0.3 W (typ.)

On mode: 28.6 W (typ.)

Standby mode: 0.5 W (typ.)

Power LED indicator: Operation - White, Standby mode- White (blinking)

Dimensions

Packaging in mm (WxHxD): 840 x 525 x 186 mm

Product without stand (mm): 709 x 426 x 96 mm

Product with stand(max height): 709 x 519 x 150 mm

Weight

Product with packaging (kg): 10.37 kg

Product with stand (kg): 6.46 kg

Product without stand (kg): 5.83 kg

Operating conditions

Altitude: Operation: +12,000ft (3,658m), Non-operation: +40,000ft (12,192m)

Temperature range (operation): 0°C to 40 °C

MTBF: 50,000 (Excluded backlight) hour(s)

Relative humidity: 20%-80 %

Temperature range (storage): -20°C to 60 °C

Sustainability

Environmental and energy: RoHS

Recyclable packaging material: 100 %

Specific Substances: Mercury free, PVC / BFR free housing

Post consumer recycled plastics: 85%*

Compliance and standards

Regulatory Approvals: CB, CE Mark, UKCA, EMF, FCC, ICES-003, BSMI, MEPS, PSB

Cabinet

Color: Charcoal

Finish: Textured



* Radius of the arc of the display curvature in mm
* For best output performance, please always ensure that your graphic card is capable of achieving the maximum resolution and refresh rate of this Philips display.
* Response time value equal to SmartResponse
* Smart MBR is to adjust brightness for blur reduction, so cannot adjust brightness while MPRT is turned on. To reduce motion blur, LED backlight will strobe synchronously with screen refresh, which may cause noticeable brightness change.
* Smart MBR is gaming-optimized mode. Turn on Smart MBR may cause noticeable screen flickering. It is recommended to turn off when you are not using the gaming function.
* Adobe RGB and DCI-P3 Coverage based on CIE1976, sRGB Area based on CIE1931, NTSC Area based on CIE1976.
* This monitor strives for sustainability: the stand's feet and headphone holder are made with 35% recycled plastic and monitor's chassis is made up of 85% post-consumer recycled plastic.
* The products and accessories listed on this leaflet may differ by country and region.
* The monitor may look different from feature images.