

PHILIPS

LCD monitor with
USB-C

Business Monitor

3000 series

24 (23.8" / 60.47 cm diag.)

1920 x 1080 (Full HD)

24B2U3301



Redefining workflow productivity

This monitor delivers business efficiency. Not only is it equipped with essential features, but it also has ones that stand out like its 120hz refresh rate, SoftBlue, Flicker-Free, VESA mount, and more.

Designed for the way you work

- Built-in stereo speakers for multimedia
- SmartErgoBase enables people-friendly ergonomic adjustments
- Smart Link Sync: for uniform daisy-chained displays
- Eyesafe certified blue light protection and color accuracy
- Less eye fatigue with Flicker-free technology
- EasyRead mode for a paper-like reading experience
- SoftBlue Technology: for comfortable viewing

Single cable USB-C connection

- RJ-45 to USB-C gives easy network connection with security
- USB 3.2 high speed data transfer

Superb Picture Quality

- 120Hz refresh rates for ultra-smooth images
- 16:9 Full HD display for crisp detailed images
- IPS LED wide view technology for image and color accuracy

Highlights

IPS technology



IPS displays use an advanced technology which gives you extra wide viewing angles of 178/178 degree, making it possible to view the display from almost any angle. Unlike standard TN panels, IPS displays gives you remarkably crisp images with vivid colors, making it ideal not only for Photos, movies and web browsing, but also for professional applications which demand color accuracy and consistent brightness at all times.

16:9 Full HD display



Picture quality matters. Regular displays deliver quality, but you expect more. This display features enhanced Full HD 1920 x 1080 resolution. With Full HD for crisp detail paired with high brightness, incredible contrast and realistic colors expect a true to life picture.

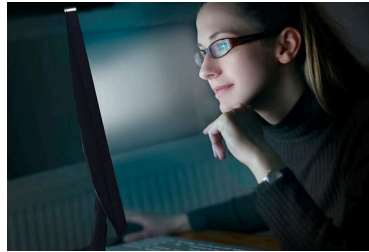
120Hz Fast refresh



For gaming and video performance, you demand display with lag free, ultra-smooth images. This Philips display redraws the screen image up to 120 times per second, much faster than a standard display. A lower frame rate can make enemies appear to jump from spot to spot on the screen, making them difficult targets to hit. With 120Hz frame rate, you get those critical

missing images on the screen which shows enemy movement in ultra-smooth motion so you can easily target them.

SoftBlue Technology



SoftBlue LED technology, combined with the monitor's low blue light panel, is an effective solution to reducing the adverse health effects caused by high exposure to blue light. In this monitor's panel, the ratio of light is reduced by nearly 50 percent while the SoftBlue LED technology works simultaneously by reducing harmful blue light rays emitted from the screen. Not to mention, the SoftBlue LED technology is tested and certified by TUV Rheinland Eyesafe® for its effectiveness in reducing blue light emissions.

Built-in stereo speakers



A pair of high quality stereo speakers built into a display device. It can be visible front firing, or invisible down firing, top firing, rear firing, etc depending on model and design.

Flicker-free technology



Due to the way brightness is controlled on LED-backlit screens, some users experience flicker on their screen which causes eye fatigue. Philips

Flicker-free Technology applies a new solution to regulate brightness and reduce flicker for more comfortable viewing.

EasyRead mode



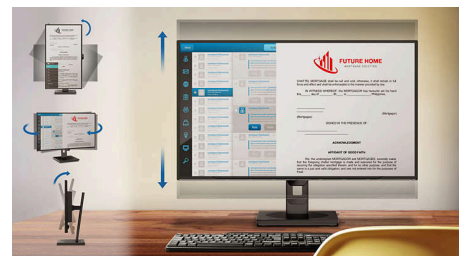
EasyRead mode for a paper-like reading experience

TUV Rheinland Eyesafe - RPF® 40



Philips display meets TUV Rheinland Eyesafe® standard to truly protect you from the long exposure to blue light. The always-on blue light filter not only helps reduce digital eye strain, but also guarantees color integrity.

SmartErgoBase



The SmartErgoBase is a monitor base that delivers ergonomic display comfort and provides cable management. The base can swivel, tilt and rotate to various angles to ensure maximum comfort. The height adjustable stand guarantees the optimal viewing level, reducing the physical strains of a long workday, while cable management reduces cable clutter and keeps the workspace neat and professional.



Highlights

High speed data transfer

USB 3.2 high speed data transfer

USB-C Docking with RJ45



Simplify all peripherals from monitor to PC using one-cable-docking USB Type-C connector, includes networking, high resolution video output from PC to monitor, and surfing on Internet without an additional network cable, even without LAN port on your notebook. RJ45 connection through USB-C offers a fast and secure connection when needed. Getting the

fastest data speeds allows you to transfer data from a HDD to your PC faster than ever.

Additionally, USB-C with power delivery can even enable you to power and charge your notebook from the monitor, eliminating the need for extra power cables.

Smart Link Sync



Easily create a seamless multi-monitor workspace with Smart Link Sync, designed to automatically align display settings across daisy-chained

monitors. Whether you're designing, presenting, or multitasking, enjoy consistent brightness and color without manual tweaks. Choose from OSD Sync or Light Sync modes (Low, Mid, or High) on the primary monitor to match your environment. For identical monitors, any mode ensures uniform visuals; for mixed models, Light Sync intelligently adjusts luminance for a balanced, professional look across screens.

Specifications

Picture/Display

Panel Size: 23.8 inch/60.47 cm
Aspect ratio: 16:9
LCD panel type: IPS technology
Backlight type: W-LED system
Pixel pitch: 0.2745(H)mm x 0.2745(V)mm
Optimum resolution: 1920x1080@60Hz
Brightness: 300 cd/m²
Display colors: 16.7M (8 bit)
Color gamut (typical): sRGB 110% , NTSC 96% *
Contrast ratio (typical): 1500:1
SmartContrast: 50,000,000:1
Response time (typical): 4 ms (Gray to Gray)*
Viewing angle: 178° (H) / 178° (V), @ C/R > 10
Picture enhancement: SmartImage
Maximum resolution: 1920x1080@120Hz
Effective viewing area: 527.04(H)x296.46(V) mm
Scanning Frequency: 30k-140 kHz (H) / 48-120 Hz (V)
sRGB
SoftBlue
Flicker-free
Pixel Density: 93 PPI
Display Screen Coating: Anti-Glare, 3H, Haze 25%
EasyRead
Adaptive sync
EyeSafe
Smart Link Sync: When used as a primary or secondary monitor*

Connectivity

Signal Input: HDMI 1.4 x 1, DisplayPort 1.4 x 1, USB-C x 1 (upstream, DP Alt mode, Data, PD)
Sync Input: Separate Sync, Sync on Green
Audio (In/Out): Audio out
RJ45: Ethernet LAN (USB 2.0: 10M/100M; USB 3.0: 1000M)
Signal Output: DP out
HDCP: HDCP 1.4 (HDMI / DisplayPort)
USB Hub: USB3.2, Gen1, 5G, upstream: 1x USB-C (Full), downstream: USB-A x4 (with x1 fast charge B.C 1.2)

Power Delivery

Max power delivery: Up to 90W (5V/3A, 7V/3A, 9V/3A, 10V/3A, 12V/3A, 15V/3A, 20V/4.5A)
Version: USB PD version 3.0

Convenience

Built-in Speakers: 2W x 2
Plug & Play Compatibility: DDC/CI, Mac OS, sRGB, Windows 11 / 10
User convenience: SmartImage, Input, Brightness, Menu, Power On/Off
OSD Languages: Brazil Portuguese, Czech, Dutch, English, French, Finnish, German, Greek, Hungarian, Italian, Japanese, Korean, Portuguese, Polish, Russian, Simplified Chinese, Spanish, Swedish, Traditional Chinese, Turkish, Ukrainian
Other convenience: Kensington lock, VESA mount (100x100mm)
Control software: SmartControl

Stand

Height adjustment: 150 mm
Pivot: -/+90 degree
Swivel: -/+180 degree
Tilt: -5/30 degree

Power

ECO mode: 10.4 W (typ.)
Power supply: Built-in, 100-240VAC, 50-60Hz
Off mode: 0.3 W (typ.)
On mode: 13.53 W (typ.) (EnergyStar test method)
Standby mode: 0.3 W (typ.)
Power LED indicator: Operation - White, Standby mode- White (blinking)
Energy Label Class: C

Dimensions

Packaging in mm (WxHxD): 690 x 395 x 124 mm
Product without stand (mm): 542 x 320 x 48 mm
Product with stand(max height): 542 x 499 x 228 mm

Weight

Product with packaging (kg): 7.75 kg
Product with stand (kg): 5.72 kg
Product without stand (kg): 3.70 kg

Operating conditions

Altitude: Operation: +12,000ft (3,658m), Non-operation: +40,000ft (12,192m)
Temperature range (operation): 0°C to 40 °C
Relative humidity: 20%-80 %
Temperature range (storage): -20°C to 60 °C
MTBF (demonstrated): 70,000 hrs (excluded backlight)

Sustainability

Environmental and energy: Energy Star, EPEAT*, RoHS
Post consumer recycled plastic: 85%
Recyclable packaging material: 100 %
Specific Substances: PVC / BFR free housing

Compliance and standards

Regulatory Approvals: ETL, CEC, CB, TUV/GS, TUV Ergo, TCO Certified, TCO Certified Edge, EAC, EAEU RoHS, MEPS, CE Mark, UKCA, EMF, FCC, ICES-003, TÜV Rheinland Low Blue Light (Hardware Solution), eyesafe® CERTIFIED 2.0

Cabinet

Finish: Texture
Foot: Black
Front bezel: Black
Rear cover: Black

What's in the box?

Cables: HDMI cable, DisplayPort cable, USB-C to C cable, Power cable
Monitor with stand
User Documentation



* "IPS" word mark / trademark and related patents on technologies belong to their respective owners.

* Response time value equal to SmartResponse

* sRGB area based on CIE 1931, NTSC area based on CIE 1976

* EPEAT rating is valid only where Philips registers the product. Please visit <https://www.epeat.net/> for registration status in your country.

* For Smart Link Sync to function properly, all daisy-chained monitors must be compatible with Smart Link.

* The products and accessories listed on this leaflet may differ by country and region.

* The monitor may look different from feature images.