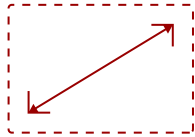


## LS901-4K - 5,500 ANSI LUMENS 4K HDR LASER PROJECTOR

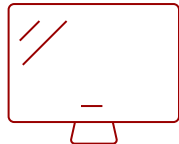
### Key Features

---

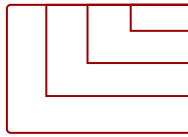
- Entertainment on a Bigger Screen than your TV
- True 4K Ultra HD Resolution
- Powerful Brightness, Stunning Detail
- Ultra-wide 21:9 Cinematic Views
- Easy Setup in Any Space



30 - 300 in. / 0.76 - 7.62 m  
**DISPLAY**



**PANEL**



3840 x 2160  
**RESOLUTION**



### Product Description

---

Bring the movie theater home with the ViewSonic® LS901-4K laser projector. Experience stunning 4K detail and vibrant colors that make your favorite films and shows come alive, even in big rooms. Enjoy a truly cinematic experience with HDR/HLG support and a widescreen 21:9 aspect ratio. Set it up anywhere thanks to flexible installation options like optical zoom, vertical lens shift, and 360° projection - you'll get a perfect picture every time. Plus, the long-lasting laser light source means you can enjoy brilliant entertainment for years.

### Specifications

---

More Information

UPC

766907027624

<b>Light Source</b>	DLP Laser
<b>Display Resolution</b>	4K (3840x2160)
<b>Display Resolution</b>	3840 x 2160
<b>Brightness (Lumens)</b>	5,500 ANSI
<b>Screen Size</b>	30 - 300 in. / 0.76 - 7.62 m
<b>Throw Distance</b>	1m-10.96m (100"@3.32m)
<b>Throw Ratio</b>	1.2-2.04
<b>Keystone</b>	Vertical ( $\pm 30^\circ$ ) / Horizontal ( $\pm 30^\circ$ )
<b>Light Source (watt)</b>	Laser
<b>Light Source Life, Normal (hours)</b>	20000
<b>Light Source Life, Dynamic Eco-Mode (hours)</b>	30000
<b>Color Depth</b>	1.07 Billion Colors
<b>Dynamic Contrast Ratio</b>	3,000,000:1
<b>Aspect Ratio</b>	16:9
<b>Lens Shift</b>	V: 0%, -21%
<b>Frequency Horizontal</b>	15K-255KHz
<b>Frequency Vertical</b>	23-240Hz
<b>PC Resolution (max)</b>	3840 x 2160
<b>PC Resolution (min)</b>	640 x 480
<b>Mac® Resolution (max)</b>	3840 x 2160
<b>Mac® Resolution (min)</b>	640 x 480
<b>USB 2.0 Type A</b>	1
<b>Ethernet LAN (RJ45)</b>	1
<b>3.5mm Audio Out</b>	1
<b>Control (RS-232)</b>	1
<b>HDMI 2.0 (with HDCP 2.2)</b>	2
<b>Internal Speakers</b>	15W (x2)
<b>Voltage</b>	100-240V+/- 10%, 50/60Hz AC
<b>Consumption (typical)</b>	245W
<b>Stand-by</b>	<0.5W
<b>Physical Controls</b>	Keypad, Power key
<b>On Screen Display</b>	Display, Image, Power Management, Basic, Advanced, System, Information (See user guide for full OSD functionality)
<b>Temperature</b>	32-104° F (0 - 40° C)
<b>Kensington Lock Slot</b>	1
<b>Net (lbs)</b>	10.69

<b>Gross (lbs)</b>	15.0
<b>Net (kg)</b>	4.85
<b>Gross (kg)</b>	6.8
<b>Packaging (in.)</b>	19.5 x 15.2 x 7.7
<b>Physical (in.)</b>	13.3 x 11.0 x 5.2
<b>Packaging (mm)</b>	496.0 x 387.0 x 195.0
<b>Physical (mm)</b>	337.0 x 280.0 x 132.0
<b>Regulations</b>	cTUVus
<b>Package Contents</b>	LS901-4K, power cable, remote control, Quick Start Guide
<b>Warranty</b>	Three-year limited warranty on parts and labor, 1st year free Express Exchange® service. (One year Express Exchange Service requires product registration).
<b>Recycle/Disposal</b>	Please dispose of in accordance with local, state or federal laws.

UPC: 766907027624



**Contact Sales**  
[ViewSonic.com](http://ViewSonic.com)

888.881.8781  
 email:  
[salesinfo@viewsonic.com](mailto:salesinfo@viewsonic.com)