

HP EliteBook X G1a

Be the visionary. Unleash your genius with speed and stealth via local AI.

HP and AMD deliver a powerful AMD Ryzen™ processor^{16,17} capable of up to 55 TOPS³⁹ and high-speed memory



Power and elegance in one

Dream it, then do it with a powerful NPU¹³, capable of up to 55 TOPS that will run models as large as 13B parameters locally. Engineered to work as hard as you do with the fast response time, streamlining workflows, local AI keeping company IP secure and reducing the need to purchase cloud services, and a 74.5Whr battery that won't let you down at crunch time.



poly camera pro

Experience conferencing the way it should be

Showcase your authenticity on any camera. AI-enabled Poly Camera Pro¹⁴ ensures your presence is felt in every frame, while Auto Frame and Spotlight make sure the focus stays on you. Background blur and virtual backgrounds will enhance your visual impact but will also help reduce drain on your battery as they're powered by the NPU.



Microsoft Copilot key¹⁵

opens the prompt window so your AI assistant is at your fingertips.



AI at your fingertips

Your personal built-in AI Companion³⁴ elevates everyday tasks to keep you performing your best. Ask, discover, and get intelligent assistance. Analyze and query your personal files. Perform at your best with an HP settings and support assistant.³⁵

Designed for intense work sessions

Maximize efficiency with next-gen high bandwidth memory up to 64GB LPDDR5x, and up to 8000 MT/s, which enables on-device generative AI to run efficiently for power users who need high-performance computing for content creation, data analysis, and AI-driven applications. Enjoy cool and quiet performance in any setting with HP Smart Sense³⁷ and the innovative dual turbo high-density fans.

Help protect our shared future

Responsibly crafted, 60% of the major parts contain recycled material including up to 80% recycled aluminum¹⁹ in covers + 21% recycled cooking oil in the bezel²⁷, 30% ocean bound plastic²⁰ on the speaker box, heat plate made with 50% recycled copper¹⁹, and 100% sustainable materials on the packaging¹⁸.

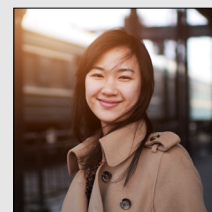
Protected by HP Wolf Security³⁶

Experience peace of mind with HP's advanced security suite, offering unparalleled resilience against external attacks and future cyber threats, including those from evolving quantum cryptography.

- HP Sure Shutter
- HP Sure Click³
- HP Sure Sense⁴
- HP Sure Start⁵
- HP Sure Admin⁶
- HP Sure Run⁷
- HP Sure Recover⁸
- HP Tamper Lock⁹
- HP Management Integration Kit¹⁰
- HP Client Security Manager¹¹
- HP BIOSphere¹²



Designed for



Modern leaders



Tech experts

Recommended ecosystem¹



HP 965 Ergonomic Wireless Keyboard



Poly Voyager Focus 2 USB-A Headset



HP 925 Ergonomic Wireless Mouse



HP 965 4K Webcam



HP Series 7 Pro 31.5" 4K Thunderbolt 4 Monitor



HP E14 G4 Portable Monitor

HP EliteBook X G1a



Processor/Chipset	Next Generation AMD Ryzen™ PRO Processors ^{16,17}
Dimensions	312.2 mm (W) x 214.75 mm (D) x 8.98mm (front)/13.17mm (rear). Maximum height 18.1mm 12.29 in (W) x 8.45 in (D) x 0.35 in (front) / 0.52 in (rear). Maximum height: 0.71 in
Weight	Starting at 1.499kg, 3.3lbs (Weight will vary by configuration. Does not include power adapter.) ²¹
Display	14.0 in diagonal, WUXGA (1920 x 1200), UWVA, Anti-Glare, 400 nits, sRGB 100%, LCD Panel with IOL 2.0 14.0 in diagonal, 2.8K (2880 x 1800), Touch, 120Hz (VRR), UWVA, BrightView, Low Blue Light, 400 nits, DCI-P3 100%, OLED Panel with IOL 2.08
Available Graphics	Integrated: AMD Radeon™ Graphics
Maximum Memory	Up to 64 GB LPDDR5x-8000MT/s RAM memory soldered down.
Internal Storage	512 GB up to 2 TB PCIe® Gen4x4 NVMe™ M.2 SSDTLC , 512 GB PCIe® Gen4x4 NVMe™ M.2 SED SSDTLC 256 GB up PCIe® NVMe™ Value M.2 SSD, 512 GB up to 2 TB PCIe® Gen5 NVMe™ M.2 CZL ⁴¹
Input Devices	HP Premium Keyboard - backlit keyboard with spill-resistant and DuraKeys; Clickpad with multi-touch gesture support, taps enabled as default; Microsoft Precision Touchpad; GS Mark Compliant
Ports & Connectors	2 Thunderbolt™ 4 with USB Type-C® 40Gbps signaling rate (USB Power Delivery, DisplayPort™ 2.1); 1 USB Type-C® 10Gbps signaling rate (USB Power Delivery, DisplayPort™ 2.1); 1 USB Type-A 10Gbps signaling rate (1 charging); 1 HDMI 2.1 ³¹ ; 1 stereo headphone/microphone combo jack ; (HDMI cable sold separately.)
Communications	Mediatek MT7925 SD 1418 Wi-Fi 713 +Bluetooth® 5.4 AIM-T WW WLAN,
Camera	5 MP camera; IR Camera; AI ISP Camera; Poly Camera Pro ³² ; Windows Studio Effects ³³
Audio	Audio by Poly Studio, four stereo speakers, dual microphones enhanced by AI noise reduction ²³
Battery Type	HP Long Life 4-cell, 74.5 Wh polymer
Power	HP 100W Slim USB Type-C® AC power adapter
Security Management	Absolute persistence module; HP Secure Erase; HP Sure Click; ³ HP Sure Sense; ⁴ BIOS Update via Network; HP Sure Admin; ⁶ HP BIOSphere; ¹² TPM 2.0 embedded security chip (Common Criteria EAL4+ and FIPS 140-2 Level 2 Certified); HP Sure Start ⁵ ; HP Wake on WLAN; HP Tamper Lock ⁹ ; HP Sure Run ⁷ ; HP Sure Recover ⁸ ; Secured-Core PC Enable
Management Features	HP Client Management Script Library (download); HP Driver Packs (download); HP Client Catalog (download); HP Manageability Integration Kit Gen (download) ²⁴ ; HP Image Assistant Gen (download); HP Patch Assistant (download); HP Cloud Recovery; HP Connect for Microsoft Endpoint Manager
Software	HP Connection Optimizer; HP Hotkey Support; HP Support Assistant; HP Easy Clean ²⁵ ; HP Power Manager ²⁶ ; myHP ¹⁴ ; HP Privacy Settings; HP Notifications; HP PC Hardware Diagnostics Windows; HP Smart Support; HP Services Scan, Buy Office (Sold separately)
Sustainability	60% of the major parts contain recycle material including up to 80% recycled aluminum in covers ¹⁹ + 21% recycled cooking oil in the bezel ²⁷ , 30% Ocean-bound plastic on speaker box ²⁰ , heat plate made with 50% recycled copper ¹⁹ , 100% sustainable materials on package ¹⁸ ; Low Halogen; Bulk packaging available; ENERGY STAR® certified; CECP; IT ECO Declaration; EPEAT® Gold registered in the U.S. ^{28,30} ; SEPA; Taiwan Green Mark; Japan PC Green Label; KOECO; TCO Certified; FEMP; Power Consumption Measurement ²⁹



HP EliteBook X G1a

Footnotes

1. Displays and peripherals sold separately.
2. HP Sure View integrated privacy screen is an optional feature that must be configured at purchase and is designed to function in landscape orientation.
3. HP Sure Click requires Windows 10. See https://bit.ly/2PrLT6A_SureClick for complete details.
4. HP Sure Sense is available on select HP PCs and is not available with Windows 10 Home.
5. HP Sure Start Gen7 is available on select HP PCs and requires Windows 10.
6. HP Sure Admin requires Windows 10 and HP BIOS.
7. HP Sure Run Gen5 is available on select HP PCs and requires Windows 10.
8. HP Sure Recover Gen5 is available on select HP PCs and requires Windows 10 and an open network connection. You must back up important files, data, photos, videos, etc. before using HP Sure Recover to avoid loss of data. Network based recovery using Wi-Fi is only available on PCs with Intel Wi-Fi Module.
9. HP Tamper Lock requires a supervisor password be established prior to use.
10. HP Manageability Integration Kit can be downloaded from <http://www8.hp.com/us/en/ads/clientmanagement/overview.html>.
11. HP Client Security Manager Gen6/Gen7 requires Windows and is available on the select HP Elite and Pro PCs.
12. HP BIOSphere Gen7 requires Windows 10 and is available on select HP Pro and Elite PCs. Features may vary depending on the platform and configurations.
13. AI applications that require an NPU may require software purchase, subscription or enablement by a software or platform provider, and third-party software may have specific configuration or compatibility requirements. Performance varies by use, configuration, and other factors.
14. Requires Windows OS.
15. Copilot in Windows requires Windows 11. Some features require an NPU. Timing of feature delivery and availability varies by market and device. Requires Microsoft account to log in. Where Microsoft in Windows is not available, the Copilot key will lead to the Bing search engine. See <http://aka.ms/WindowsAIFeatures>
16. Multicore is designed to improve performance of certain software products. Not all customers or software applications will necessarily benefit from use of this technology. Performance and clock frequency will vary depending on application workload and your hardware and software configurations. AMD's numbering, branding and/or naming is not a measurement of higher performance
17. Features and software that require a NPU may require software purchase, subscription or enablement by a software or platform provider, and third party software may have specific configuration or compatibility requirements. Potential NPU inferring performance varies by use, configuration, and other factors.
18. 100% outer box packaging made from sustainably sourced certified and recycled fibers. Fiber cushions made from 100% recycled wood fiber and organic material. Any plastic cushions are made from >90% recycled plastic.
19. Recycled metal is expressed as a percentage of the total weight of the metal according to ISO 14021 definitions for metal parts over 25 grams. Percent of recycled material varies by product.
20. Recycled plastic content percentage is based on the definition set in the IEEE 1680.1-2018 EPEAT standard.
21. Actual weight will vary by configuration.
22. For storage drives, GB = 1 billion bytes. Actual formatted capacity is less. Up to 30 GB (for Windows) is reserved for system recovery software.
23. Requires myHP application and Windows OS.
24. HP Manageability Integration Kit can be downloaded from <http://www8.hp.com/us/en/ads/clientmanagement/overview.html>.
25. HP Easy Clean requires Windows 10 RS3 and will disable the keyboard, touchscreen, and clickpad only. Ports are not disabled. See user guide for cleaning instructions. HP EasyClean is activated 3 seconds after it is opened. The 3 second window is for the user to cancel the sanitization mode in case the app is accidentally opened. After the timer ends, you can press any key to exit the app.
26. HP Power Manager requires Windows 10 and higher and can be downloaded from the Microsoft Store.
27. HP EliteBook X G1a bezel contains at least 20% resin that is partially derived from bio-waste such as used cooking oil. Manufactured according to the mass balance approach.
28. Based on US EPEAT® registration according to IEEE 1680.1-2018 EPEAT®. EPEAT® status varies by country. Visit www.epeat.net for more information.
29. Power Consumption Measurement with real-time total power usage tracking will release in 2024 on our commercial notebook line. The energy consumption data is planned to be available to end users within myHP and ITDMs via HP Proactive Insights in May 2024. Fleet management within HP Proactive Insights requires Windows 10 or higher and registration for the Workforce Experience platform at <https://admin.hp.com>. Some features and capabilities may require additional purchase of HP services and/or commercial hardware capable of supporting the HP Insights agent for Windows, Mac, & Android. Activation and restrictions may apply. Select HP Workforce Solutions require an HP Insights agent for Windows, Mac, & Android, available for download at <https://admin.hp.com/software>. For full system requirements and services that require the agent, please visit <https://admin.hp.com/requirements>. The agent collects telemetry and analytics around devices and applications that integrate into the Workforce Experience platform and is not sold as a standalone service. Internet access with connection to the Workforce Experience platform is required. HP follows stringent GDPR privacy regulations, and the platform is ISO27001, ISO27701, ISO27017 and SOC2 Type2 certified for Information Security.
30. See www.epeat.net for registration status and tier levels by country.
31. HDMI 2.1 Support resolution up to 4K @60 Hz
32. Requires Windows OS.
33. Not all features are available in all editions or versions of Windows. Systems may require upgraded and/or separately purchased hardware, drivers, software or BIOS update to take full advantage of Windows functionality. Windows is automatically updated and enabled. High speed internet and Microsoft account required. ISP fees may apply and additional requirements may apply over time for updates. See <http://www.windows.com>.
34. HP AI Companion is available preloaded on select HP next gen AI PCs or is available for download from the Microsoft store and requires a HP next gen AI PC with a NPU supporting 40-60 TOPS and requires Windows 11. Perform requires account set up within 30 days of PC boot. Some features require customer upload of local data. Five (5) library 100MB limit each and supports pdf, .txt, .docx files. HP may limit search prompts to 200 per calendar month.40. Requires Windows OS.
35. Planned feature availability in early 2025.
36. HP Wolf Security for Business requires Windows 10 and higher, includes various HP security features and is available on HP Pro, Elite, Workstation, and RPOS products. See product details for included security features.
37. Smart Sense requires the myHP app and Windows 11 OS. Features may vary by platform.
38. Free update to Copilot+ PC experiences when available from Microsoft. Timing and availability will be dependent on Microsoft.
39. Available on select models
40. Copilot+ in Windows requires Windows 11. Some features require an NPU. Timing of feature delivery and availability varies by market and device. Requires Microsoft account to log in. Where Microsoft in Windows is not available, the Copilot key will lead to the Bing search engine. See aka.ms/copilotpluspc
41. For storage drives, GB = 1 billion bytes. Actual formatted capacity is less. Up to 30 GB (for Windows) is reserved for system recovery software

© Copyright 2024 HP Development Company, L.P. The information contained herein is subject to change without notice. The only warranties for HP products and services are set forth in the express warranty statements accompanying such products and services. Nothing herein should be construed as constituting an additional warranty. HP shall not be liable for technical or editorial errors or omissions contained herein. Microsoft®, Windows® 11, and Windows® 11 Pro are registered trademarks or trademarks of Microsoft Corporation in the United States and/or other countries.

Thunderbolt is a trademark of Intel Corporation or its subsidiaries in the U.S. and/or other countries. Bluetooth is a trademark owned by its proprietor and used by HP Inc. under license. USB Type-C® and USB-C® are registered trademarks of USB Implementers Forum. DisplayPort™ and the DisplayPort™ logo are trademarks owned by the Video Electronics Standards Association (VESA®) in the United States and other countries. Members of Wi-Fi Alliance® are bound to follow the requirements of the Brand Style guide pursuant to the Certification Mark License Agreement. Please contact brandusage@wi-fi.org if you have any questions about Wi-Fi Alliance mark usage, requirements.

