

# Technical Specifications

## Shelter



**NOOK**<sup>®</sup>

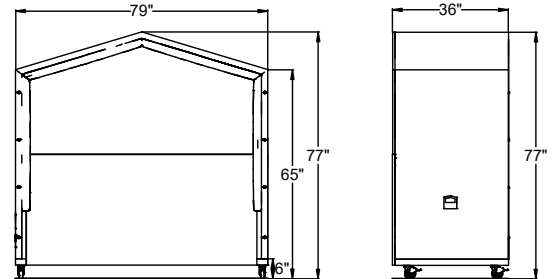
Nook Shelter was designed to provide a quiet space for groups or individuals. Shelter does not include power or lighting as stand features.

### Dimensions

Overall	79w x 36d x 77h
Weight	331 lbs
Capacity	1-2 person, ADA Compliant

### Construction

Surfaces	M3 industrial grade particle board with HPL (high pressure laminate) finished on both sides.
Surface edge	PVC
Casters	(4) Locking plate casters (4" h) attached in each corner of base. Casters can be removed.
Power	Available at an upcharge.
Upholstery	Side and ceiling panels constructed of acoustic foam with backing panels.
Light	Available at an upcharge.
Assembly	Shipped KD. Panels assemble with screwdriver, cams, and metal and wood dowels. Installation time approximately two hours for a team of two.
Compliance	Nook is both fire and material code compliant.



### Standard Base Finishes

Surfaces	Laminate - Egger White W1000
Surface edge	PVC - see website for standard color options
Marker Board	Erasable writing surface - upper/lower back panel front and back
Casters	Grey
Upholstery	Grade 1 Burch Metric



Monitors safely mount to rear wall. Please contact Customer Service for additional information.

### Options

L2 Premium Laminates	Egger Laminates - Light Sorano Oak, Grey Bardolino Oak, Tobacco Aida Walnut, Dust Grey, Black
Rear Wall	Full wall is standard.
Upholstery	Refer to website for additional upgrade options
COM	Contact Customer Service

### Replacement Parts, Finish Samples & Warranty

Replacement Parts and Finish Samples	Contact Nook 1-847-805-8510 hellousa@nookpodusa.com
Warranty	3 year limited

### Sustainability

At Nook, we strive to develop & design products that lessen the impact on the environment through use of alternative materials & eco-friendly technology. It is our corporate policy to comply or exceed with all applicable environmental regulations, employ contemporary recycling, waste reduction and sustainable practices.

Manufactured in UK (ships from Chicago)

