



imagePROGRAF PRO-1100

Professional 17" Wireless Inkjet Photo Printer

- IMPROVED BLACK DENSITY
- ENHANCED BLUE-DARK SHADES
- IMPROVED MEDIA SUPPORT
- LONGER LIGHT-RESISTANCE
- IMPROVED SCRATCH RESISTANCE



Prints various
paper sizes up to
17" x 22"

11
Individual Inks
(plus Chroma Optimizer)

4
Monochrome Inks
(for deeper, richer
Monochrome prints)

**L-COA
PRO**
High-precision
Processing Engine



**LUCIA
PRO II ink¹**

New pigment ink system that inherits LUCIA PRO's high image quality and further enhances image robustness and photo art quality.



The Printer That's Equally Obsessed



imagePROGRAF PRO-1100

Professional 17" Wireless Inkjet Photo Printer

NEW &
IMPROVED
INK
SYSTEM



New pigment ink system that inherits LUCIA PRO's high image quality and further enhances image robustness and photo art quality.¹

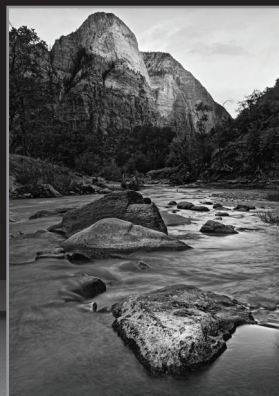
1. Improved Print Longevity²

Newly developed pigment ink "LUCIA PRO II" uses high light-resistant inks for long-term preservation of printed images.



2. Improved Scratch Resistance

New Highly Crystalline Wax reduces abrasiveness without losing image quality and makes handling artwork less worrisome.



3. Improvement of Black Density

The new matte black ink formula improves black density and achieves deeper black expression.

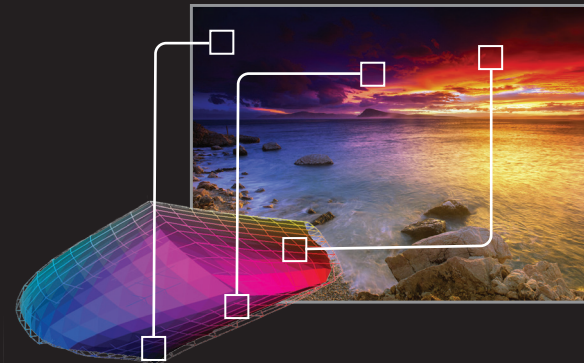
4. Greater Dark Blue Representation

New colour design has improved reproducibility in blue-dark areas for a wider gamut of colours.



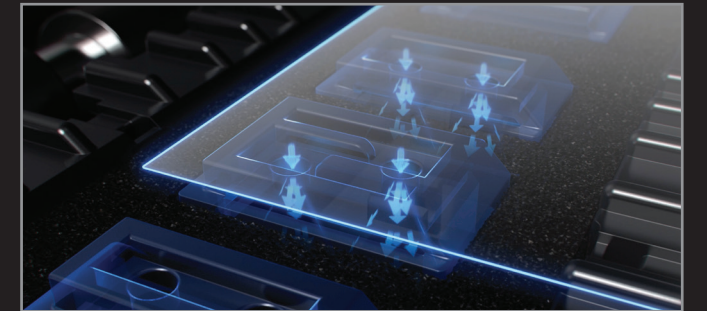
Wide Colour Gamut

A wider array of colours helps produce a wider colour gamut, achieving improved colour reproduction and image clarity as well as enhanced darker areas.



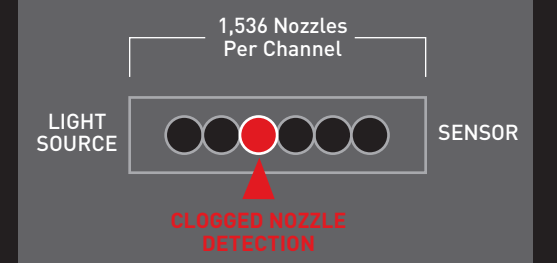
Air Feeding System

The Canon Air Feed System prevents the sheet in use from being deflected in such a way that the ink falls accurately and in the right place. This uniform level surface allows incredible ink drop accuracy and better image quality.



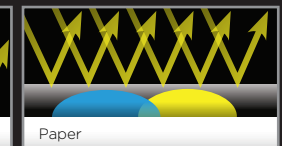
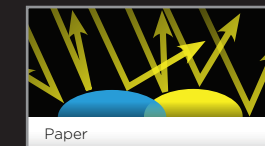
Anti-clogging Technology and Compensation Function

Ink nozzle conditions are precisely checked with sensors, and when a blockage is detected, another nozzle automatically provides backup. In addition to preventing printing failures due to banding, this also reduces the frequency at which head cleaning is required.



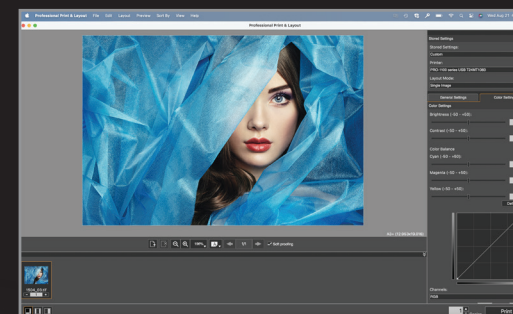
Consistent reflection of light with Chroma Optimizer

Printing on gloss paper using pigment ink sometimes results in uneven glossiness and bronzing due to the light dispersion caused by the varying height of the adhering ink. Chroma Optimizer solves this problem by evenly coating the surface of the print.



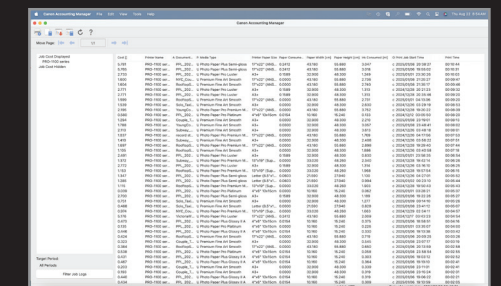
Professional Print & Layout Software

This powerful software provides professional photographers with intuitive printing solutions. A stand-alone application that also can be used as a plug-in from Digital Photo Professional or Adobe software to support seamless output.



Accounting Manager

Account for every sheet of paper and the amount of ink that was used. Accounting Manager allows you to accurately assign and track the costs of every single job.



imagePROGRAF PRO-1100

Professional Photo Printer with Wide Format Up to 17 Inches

Technical specifications

PRINTER

Print Features	Advanced Pattern Print, Air Feeding System, AirPrint ^{®3} , Anti-Clogging Technology, Auto Photo Fix, Black & White (Monochrome) Photo Printing, Borderless Printing ⁴ , Calibration Link, Canon PRINT app ² , Canon Print Studio Pro Plug-in, Chroma Optimizer, Colour Density Sensor, Contrast Reproduction, Fine Art Paper Support, Grayscale Photo Printing, Index Print, Mopria [®] Print Service ⁵ , Non-Firing and Compensation Function, Paper Feed Skew Correction, Photo Printing, Real Time Control of Ink Ejection, Wireless Printing ⁶
Printing Capability	Single Sided (Simplex) Printing, Borderless Photo Printing (4" x 6" - 17" x 22")
Print Speed (ESAT) ⁷	17" x 22" Bordered Photo (Colour): Approx. 4 Minutes ⁷ 13" x 19" Bordered Photo (Colour): Approx. 2 Minutes, 25 Seconds ⁷
Number of Nozzles	1,536 Nozzles x 12 Inks, Total: 18,432
Droplet Size	Minimum 4 Picoliters Per Ink
Print Resolution ⁸	Up to 2400 x 1200 dpi
Media Handling	Rear Tray and Manual Feed Slot
Supported Media Sizes	A5, A4, A3 (13" x 19"), A2, B5, B4, B3, Letter (8.5" x 11"), Legal (8.5" x 14"), Ledger (11" x 17"), Hagaki/Return Hagaki/A3+/L/2L/4" x 6", 5" x 7", 9" x 13", 11" x 14", 13" x 19" Super B/US Photo 16" x 20", 17" x 22", 17" x 25", 7" x 10", 8" x 10", 10" x 12", 12" x 12", 14" x 17", 17" x 22"
Media Compatibility	Plain: Plain Paper; Super High Gloss: Photo Paper Pro Platinum; Glossy: Photo Paper Plus Glossy II, Photo Paper Pro Crystal Grade Semi-Gloss; Photo Paper Plus Semi-Gloss, Photo Paper Pro Luster, Matte: Matte Photo Paper, Photo Paper Premium Matte; Other: Premium Fine Art Smooth, Premium Fine Art Rough, Fine Art "Museum Etching", Greeting Cards, Magnetic Photo Paper, Photo Stickers, Restickable Photo Paper
Paper Capacity	Top Tray: Plain Paper: 150 Sheets (Letter Size) Photo Paper: 4" x 6": 20 Sheets, 8.5" x 11" (Letter) / 8" x 10": 10 Sheets, 13" x 19" (A+) / 17" x 22": 1 Sheet Manual Feed Slot: Photo Paper: All Sizes: 1 Sheet
Printable Paper	Maximum Length: 129"
Supported Media Thickness/Weight	Top Tray: Maximum: 0.3 mm Manual Feed Slot: 0.1 mm - 0.7 mm
GENERAL	
Connectivity	Hi-Speed USB, Wi-Fi [®] / Wireless ⁶ , Ethernet 10 / 1000
Wireless Information ²	Wireless Standard: IEEE 802.11 b/g/n/a/ac Wireless Security: WPA-PSK, WPA2-PSK, WPA3-SAE Wireless LAN Frequency Band: 2.4 GHz / 5 GHz Access Point Mode Capable: Yes Wireless Direct Connection Capable: Yes
Display	3.0" LCD
OS Compatibility ¹⁰	Windows: Windows 11, Windows 10, Windows 8.1, Windows 7 SP1, Windows Server 2022, 2019, 2016, 2012 R2, 2008 R2 SP1 Mac: mac OS v14 – macOS v11.7.10 Mobile Operating Systems: iOS [®] , Android [™] , ChromeOS
Mobile Apps & Plug-ins (iOS [®] / Android [™])	AirPrint ^{®3} Canon PRINT app Mopria [®] Print Service ⁵
Software & Plug-in ⁹	imagePROGRAF PRO-1100 17" Professional Wireless Inkjet Photo Printer Driver Setup Software & User Guide CD Canon Professional Print & Layout Management Tools: <ul style="list-style-type: none">• Quick Utility Toolbox• Media Configuration Tool• Accounting Manager• Device Management Console
Warranty ¹⁰	1-Year Limited Warranty with InstantExchange Program

INK INFORMATION

Ink System	11 Individual Pigment-Based Ink System plus Chroma Optimizer, LUCIA PRO II Pigment Ink System	
Compatible Ink Tanks	PFI-4100 MBK	Matte Black Ink Tank 6776C002
	PFI-4100 PBK	Photo Black Ink Tank 6777C002
	PFI-4100 GY	Gray Ink Tank 6783C002
	PFI-4100 PGY	Photo Gray Ink Tank 6784C002
	PFI-4100 B	Blue Ink Tank 6786C002
	PFI-4100 C	Cyan Ink Tank 6778C002
	PFI-4100 PC	Photo Cyan Ink Tank 6781C002
	PFI-4100 M	Magenta Ink Tank 6779C002
	PFI-4100 PM	Photo Magenta Ink Tank 6782C002
	PFI-4100 Y	Yellow Ink Tank 6780C002
	PFI-4100 R	Red Ink Tank 6785C002
	PFI-4100 CO	Chroma Optimizer Ink Tank 6787C002
Ink Fill Volume	PFI-4100 Inks: 80.0 ml (each)	PFI-4100 CO: 80.0 ml (each)

DISCLAIMERS: SPECIFICATIONS ARE SUBJECT TO CHANGE WITHOUT NOTICE. ALL VIEWSCREEN AND OUTPUT IMAGES ARE SIMULATED.

- 1 Newly developed inks were used for 11 of the 12 inks except for matte black.
- 2 Based on accelerated testing by Canon in dark storage under controlled temperature, humidity, and gas conditions, simulating storage in an album with plastic sleeves. Canon cannot guarantee the longevity of prints; results may vary depending on printed image, drying time, display/storage conditions, and environmental factors.
- 3 AirPrint functionality requires a compatible iPad, iPhone, or iPod Touch device running iOS 7.0 or later, and an AirPrint-enabled printer connected to the same network as your iOS device.
- 4 Paper types NOT supported for borderless printing are as follows: Photo Stickers.
- 5 Requires Android mobile device with Android 4.4 operating system or later with the Mopria Print
- 6 Wireless printing and scanning requires a working network with wireless 802.11b/g/n/a/ac capability, operating at 2.4GHz or 5.0GHz. Wireless performance may vary based on terrain and distance between the printer and wireless network clients.
- 7 Photo print speed is based on the default setting using ISO/JIS-SCID N2. Print speed may vary depending on system configuration, interface, software, document complexity, print mode, page coverage, type of paper used etc.
- 8 When using Canon Photo Paper Pro Luster (LU-101).
- 9 Internet connection required during software installation.
- 10 Warranty programs are subject to certain conditions and restrictions. See www.canon.ca/support for details

Canon alliance with third parties for more supported paper types.



©2024 Canon Canada, Inc. Canon, ImagePROGRAF, and imagePROGRAF PRO are registered trademarks of Canon Inc. in the U.S. and may be registered trademarks or trademarks in other countries. Microsoft, Windows, the Windows logo and Internet Explorer are trademarks or registered trademarks of the Microsoft group of companies in the U.S. and other countries. Apple, iPad, iPhone, iPod touch and Time Capsule are registered trademarks of Apple Inc. Android, and Google Play are trademarks of Google Inc. The Mopria logo is a trademark of Mopria Alliance, Inc. The USB-IF logo is a trademark of Universal Serial Bus Implementers Forum, Inc. Wi-Fi is a registered trademark of the Wi-Fi Alliance. The 'Wi-Fi CERTIFIED' logo is a certification mark of the Wi-Fi Alliance. The Wi-Fi Protected Setup Mark is a mark of the Wi-Fi Alliance. All other product and brand names are trademarks of their respective owners. As an ENERGY STAR[®] partner, Canon Canada, Inc. has certified this product as meeting the ENERGY STAR[®] energy efficiency criteria through an EPA-recognized certification body.