



OTG11352

ZIM | ADJUSTABLE HEADREST WITH COAT HANGER

The Zim chair boasts a timeless design with functional features. Its unique wraparound mesh back beautifully sculpts the chair and provides comfort and breathability. Zim's weight sensing mechanism regulates the chair tilt tension according to the user's weight, making it ideal for shared spaces such as touchdown stations or meeting room environments.

- headrest with a built-in coat hanger for chair models [OTG11351AB](#) and [OTG11351AG](#)
- adjustable - tilts and moves up and down to fit comfortably into the curve of the neck
- available in Black mesh only
- two sets of screws are included to install the headrest with or without the coat hanger

Upholstery Options:

Back Mesh - Black
Seat Black polyester



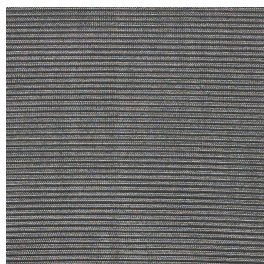
Specifications

Dimensions: 16.5"W x 7.5"D x 9.25"H

Weight: 2.2 lbs / 1.0 kg

Volume: 0.7 ft³ / 0.01 m³

Mesh Back



Black
