



**OTG11351AB**

## **ZIM | BLACK HIGH BACK WEIGHT SENSING SYNCHRO-TILTER**

The Zim chair boasts a timeless design with functional features. Its unique wraparound mesh back beautifully sculpts the chair and provides comfort and breathability. Zim's weight sensing mechanism regulates the chair tilt tension according to the user's weight, making it ideal for shared spaces such as touchdown stations or meeting room environments.

- Synchro-tilt mechanism
- Wraparound mesh back design
- Black polyester seat with a Black mesh back
- Height adjustable T-arms with soft urethane armcaps
- Multi position tilt-lock and weight sensing tension

- Seat depth adjustment
- Pneumatic seat height adjustment
- optional adjustable headrest is available - [OTG11352](#)

Upholstery Options:

Back                      Mesh - Black  
Seat                        Black polyester



## Specifications

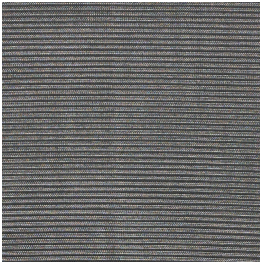
Dimensions: 26"W x 24.5"D x 43"H

Seat Height: 18" - 22.5"

Weight: 37.5 lbs / 17.0 kg

Volume: 5.75 ft<sup>3</sup> / 0.16 m<sup>3</sup>

## Mesh Back



Black

---

## Ergonomics



Chair Tilt Lock



Seat Height



Seat Depth





Arm Height



Synchro-Tilt  
Movement



Waterfall Seat Edge



Contoured Cushions