



OTG11351AG

ZIM | GREY HIGH BACK WEIGHT SENSING SYNCHRO-TILTER

The Zim chair boasts a timeless design with functional features. Its unique wraparound mesh back beautifully sculpts the chair and provides comfort and breathability. Zim's weight sensing mechanism regulates the chair tilt tension according to the user's weight, making it ideal for shared spaces such as touchdown stations or meeting room environments.

- Synchro-tilt mechanism
- Wraparound mesh back design
- Black polyester seat with a Grey mesh back
- Height adjustable T-arms with soft urethane armcaps
- Multi position tilt-lock and weight sensing tension

- Seat depth adjustment
- Pneumatic seat height adjustment
- optional adjustable headrest is available - [OTG11352](#)

Upholstery Options:

Back Mesh - Grey
Seat Black polyester



Specifications

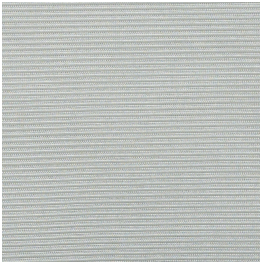
Dimensions: 26"W x 24.5"D x 43"H

Seat Height: 18" - 22.5"

Weight: 37.5 lbs / 17.0 kg

Volume: 5.75 ft³ / 0.16 m³

Mesh Back



Grey

Ergonomics



Chair Tilt Lock



Seat Height



Seat Depth





Arm Height



Synchro-Tilt
Movement



Waterfall Seat Edge



Contoured Cushions