

SHARP[®]

Be Original.

XP-X141Q

Professional Installation Projector



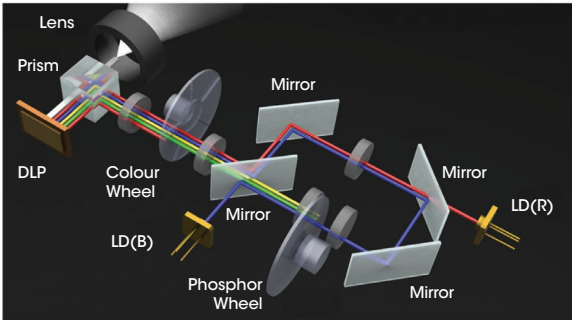
4K UHD
READY

laser
light source

Powerful installation projectors with laser-phosphor light source supports new, demanding projection applications

Laser Light Module

- 20,000-plus hours of virtually maintenance-free operation with our five year/20,000 hour limited warranty
- High-brightness, lower power consumption enhances applications such as retail, digital signage and theme parks
- Ability to control brightness creating a stable image over longer time periods
- Images appear immediately after power on due to instantaneous start up of the laser

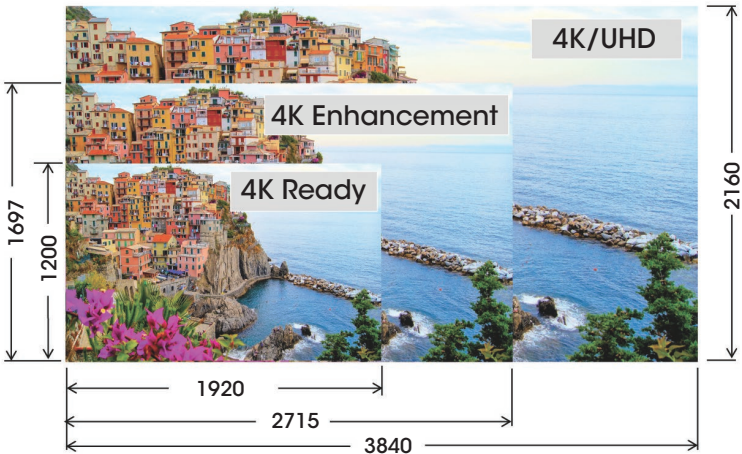


Flexible

- Enjoy greater installation flexibility with a complete line of optional bayonet style lenses (6) for quick and easy exchange. Lens throw distances range from 1.3 to 141.3ft
- Tilt-free installation capabilities make this projector ideal for almost any installation environment, including portrait orientation
- +/-60% vertical lens shift and +/-20% horizontal lens shift capabilities make alignment easy

4K UHD Resolution

- Utilizing the latest DMD (Digital Micromirror Device) chip from Texas Instruments™ with pixel shift capabilities resulting in an unsurpassed viewable resolution of 9.2 million pixels
- Screen resolution matches standard 4K UHD LCD displays providing consistency when developing content for your presentations

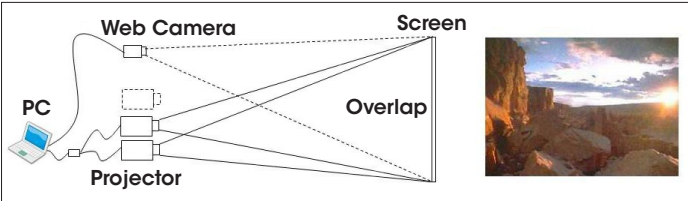


Integrated and Powerful

- Project uncompressed FHD video with integrated HDBaseT
- High-performance video processing/scaling creates life-like images
- Integrated software applications such as Crestron RoomView®, AMX Beacon and PJ Link allow for complete interactivity and control

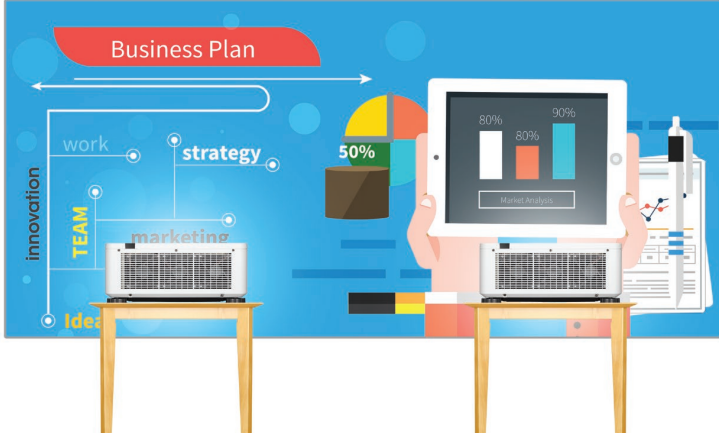
Stacking Correction

The industry's first built-in stacking correction capabilities (up to four projectors) allows the projectors to boost an image's brightness up to 54,000 lumens, which is ideal for larger-sized screens and environments with heavy ambient light. This feature also prevents the complete loss of an image, which can happen when using only one projector.



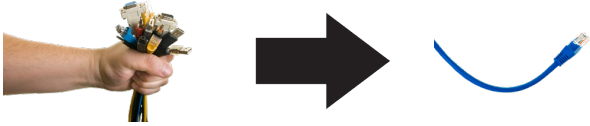
Edge Blending

This function seamlessly blends multiple projected images to display a single high-resolution image.



Built-In HDBaseT Support

Simplify your installations with HDBaseT. Optimized for video applications and supporting uncompressed full HD digital video, audio, Ethernet, power and various control signals. With only a single cable (up to 100m) to run, infrastructure and labour costs are reduced, installations are significantly easier, and there is no cable clutter to manage. With uncompressed HD video support, images have never been more stunning. What's more, control signals are contained in the same cable.



Sealed Optical Engine

- Longer lasting more consistent image and light output
- Maintenance becomes a thing of the past providing peace-of-mind while lowering maintenance costs
- Eliminates external contaminants from depositing on the optical engine preventing a degradation in image brightness

Cornerstone

Enhanced keystone correction allows for horizontal, vertical and diagonal image correction for aligned images even when the projector is set up at an angle to the screen.



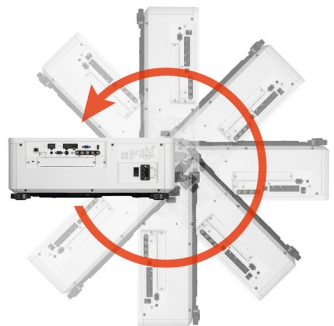
Geometric Correction

Projecting an image isn't confined to a standard flat screen or wall with the Sharp X Series. Geometric correction allows these models to project an image on spheres, cylinders, corner angles and many more non-standard surfaces.

| | | | |
|------------------------------------|---------------------------------------|-------------------------------------|--------|
| Vertical cylindrical convex screen | Horizontal cylindrical concave screen | Vertical cylindrical concave screen | Corner |
| | | | |
| | | | |

Roll Free

When installation requirements dictate the projector needs to be placed at different angles the X Series with Roll Free (360°) capabilities assures it is the correct projector of choice when projecting onto the floor, ceiling or at an angle.



Unique Features

Advanced AccuBlend™ ensures detailed images when non-native resolution sources are connected to the projector

AutoSense™ automatically syncs with any computer signal and features one-touch image optimization

Remote diagnostics enable the user to monitor and make adjustments to the projector remotely

Built-in HTTP page for control and monitoring over a LAN network. Email notification of error messages or lamp end-of-life can be sent to remote locations.

Warranty

Registered owners receive a five (5) years or 20,000 hours (whichever comes first) limited warranty.

In The Box

Remote control, batteries, power cord, user's manual on CD-ROM, quick start guide, product registration card.

Accessories

- IPJ2000CM** Ceiling mount
- RMT-PJ40** Replacement remote control
- RGBCBL-PJPX** RGB cable
- Optional Lenses** XP-57UL, XP-58ZL, XP-59ZL, XP-60ZL, XP-61ZL, XP-62ZL

Ordering Model Numbers

- XP-X141Q-B
- XP-X141Q-W



| Model | | XP-X141Q | |
|---|--|---|--|
| Display Technology | | 0.8" DLP HEP DMD | |
| Light Output (lumens) | Centre | 13,500 | |
| | Normal | 13,500 | |
| | ECO Mode OFF | 13,500 | |
| Resolution | Native | WUXGA 1920 x 1200 | |
| | Maximum | 4K UHD 3840 x 2400 | |
| Contrast Ratio (up to) | | 3,000,000:1 (with Dynamic Contrast) | |
| Laser Life (up to) | | 20,000 hours | |
| Screen Size (diagonal) | | 60 to 500 in./ 1.5 to 12.7m | |
| Throw Ratio | XP-57UL | 0.31 - 0.33:1 | |
| | XP-58ZL | 0.55 - 0.75:1 | |
| | XP-59ZL | 0.74 - 1.08:1 | |
| | XP-60ZL | 1.05 - 1.41:1 | |
| | XP-61ZL | 1.40 - 2.11:1 | |
| | XP-62ZL | 2.10 - 4.00:1 | |
| Projection Distance | | 3.58 to 141ft. / 1.09 to 43m | |
| Projection Angle | | 5.8 to 18.1° tele / 11.4 to 25.8° wide | |
| Lens | Zoom | Motorized | |
| | | XP-57UL | 1.06x |
| | | XP-58ZL | 1.36x |
| | | XP-59ZL | 1.46x |
| | | XP-60ZL | 1.34x |
| | | XP-61ZL | 1.51x |
| | Focus | Motorized | |
| | | XP-57UL | F=2.05 to 2.11, f= 5.81 - 6.17mm, TBD |
| | | XP-58ZL | F=2.04 to 2.35, f= 10.03 - 13.60mm, TBD |
| | | XP-59ZL | F=2.02 to 2.33, f= 13.47 - 16.67mm, 6.2 lbs. / 2.82 kg |
| | | XP-60ZL | F=1.90 to 2.09, f= 18.78 - 25.30mm, 6.4 lbs. / 2.91 kg |
| | | XP-61ZL | F=1.80 to 2.11, f= 25.04 - 37.57mm, 4.9 lbs. / 2.23 kg |
| Shift | +/-20% Vertical, +/-50% Horizontal (XP-57UL, XP-58ZL, XP-59ZL), +/-20% Vertical, +/-60% Horizontal (XP-60ZL, XP-61ZL, XP-62ZL) | | |
| | Shutter | Laser Shutter | |
| Keystone Correction | | +/- 36° horizontal, +/- 36° vertical | |
| Synchronization Range | Horizontal | 15kHz, 24-153kHz | |
| | Vertical | 24, 25, 30, 48 Hz, 50 to 85 Hz, 100, 120 Hz | |
| Supported Video Standards | | 24, 25, 30, 48 Hz, 50 to 85 Hz, 100, 120 Hz | |
| SD/HD Video Signal Compatibility | | 480i, 480p, 576i, 576p, 720p, 1080i, 1080p, 4K | |
| PC Signal Compatibility | | VGA, SVGA, XGA, SXGA, SXGA+, UXGA, WUXGA, Quad HD | |
| Macintosh Compatibility | | Yes | |
| Input Terminals | RGB1 (analog) | 0 | |
| | RGB1 (digital) | HDMI (V2.0) w/HDCP (V2.2/1.4) | |
| | RGB2 (digital) | HDMI (V2.0) w/HDCP (V2.2/1.4) | |
| | RGB3 (digital) | DP w/HDCP (V1.3) | |
| | RGB4 (digital) | DP w/HDCP (V1.3) | |
| | RGB5 (digital) | HDBaseT w/HDCP (V2.2/1.4) | |
| | RGB6 (digital) | 12G SDI | |
| Output Terminals | Audio1 | 0 | |
| | Monitor Out | | |
| | Audio Out | 0 | |
| 3D Sync Line | | | |
| External Control | | RS-232, IR, Wired Remote, HDBaseT, DDC/CI, RJ-45, USB (USB 2.0) | |
| Sync Compatibility | | Separate Sync / Composite Sync / Sync on G | |
| Power Requirements | | 100-240V AC, 50/60 Hz | |
| Input Current | | 10.0A - 5.0A | |
| Power Consumption | | 1000W / 900W / 3.0W / 0.5W | |
| (ECO off/ECO Mode/Standby/Standby-Power Saving) | | 100-240V AC, 50/60 Hz | |
| Installation Orientation | | Floor/Front, Floor/Rear, Ceiling/Front, Ceiling/Rear | |
| Product Dimensions (WxDxH) | | 19.7 x 23.9 x 8.5 in. / 500 x 606 x 216 mm | |
| Net Weight | | 84.9 lbs. / 38.5 kg | |
| Shipping Dimensions (WxDxH) | | 30.9 x 27.5 x 17.5 in. / 784 x 699 x 445 mm | |
| Gross Weight | | 84.9 lbs. / 38.5 kg | |
| Fan Noise | | 37 dB normal / 35 dB silent mode | |
| Regulations | US | USA UL60950-1: 2 nd edition, UL 62368-1, 3 rd Edition, FCC Part15 Subpart B (ANSI C63.4-2014) | |
| | Canada | CAN/CSA C22.2 No.62368-1-19, 3 rd Edition, ICES-003 Issue 7 (ANSI C63.4-2014) | |
| Operating | Temperature | 32-113°F / 0-45°C | |
| | Humidity | 20 to 85% Humidity (Non-Condensing) | |
| Storage | Temperature | 14-140°F / -10-60°C | |
| | Humidity | 20% - 80% (non-condensing) | |
| Ordering Model Number | | XP-X141Q-B, XP-X141Q-W | |

Visit www.sharp.ca for details.

SHARP®

Be Original.

SHARP ELECTRONICS OF CANADA LTD.
 335 Britannia Road East, Ste. 101
 Mississauga, Ontario L4Z 1W9
 1-800-567-4277 • www.sharp.ca

Printed in Canada.
 VSG-VS-XP-E-PDF-10/2024

Sharp, MultiSync, NaViSet and TileMatrix and all related trademarks are trademarks or registered trademarks of Sharp Corporation and/or its affiliated companies. The terms HDMI, HDMI High-Definition Multimedia Interface, and the HDMI Logo are trademarks or registered trademarks of HDMI Licensing Administrator, Inc. PJ Link - The PJLink trademark is a trademark applied for registration or is already registered in Japan, the United States of America and other countries and areas. All other brand names and product names may be trademarks or registered trademarks of their respective owners. Design and specifications are subject to change without prior notice.