

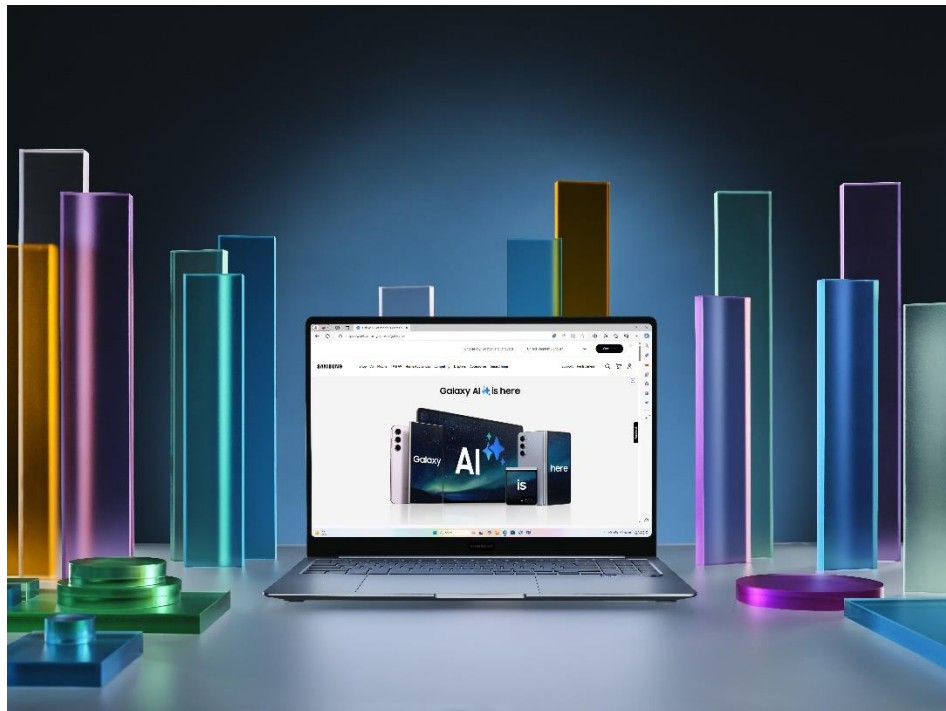


## Galaxy Book4 Edge: Samsung's Next-Gen AI PC Expands the Galaxy AI Ecosystem

*Powered by Galaxy AI and Microsoft Copilot+, and backed by Snapdragon® X Elite Compute Platform with 45 TOPS NPU AI computing power, Samsung's next-gen AI PC revolutionizes how you get things done*

**SEOUL, Korea – May 21, 2024** – Samsung Electronics Co., Ltd. today unveiled the Galaxy Book4 Edge, the next-generation of AI PCs. With 45 TOPS NPU AI computing performance and cutting-edge hybrid AI integrations, the Galaxy Book4 Edge amplifies the PC experience and offers the most hyperconnected mobile AI ecosystem yet. Together, Samsung and leading industry partners are propelling AI innovation and unleashing a next-generation AI PC with the Galaxy Book4 Edge.

“The Galaxy Book4 Edge expands our vision of AI connectivity – bridging the gap between mobile and PC, while democratizing AI experiences that change the way we operate each and every day,” said TM Roh, President and Head of Mobile eXperience Business at Samsung Electronics. “This next-generation AI PC unlocks new levels of computing performance, made possible by our proven Samsung Galaxy interface and open collaboration with industry leaders to bring our users world-class hardware and software solutions.”



## **Levelling Up AI Connectivity**

Galaxy AI<sup>1</sup> on Galaxy Book4 Edge enables the ultimate connected experience, backed with Wi-Fi 7<sup>2</sup> readiness for quick and seamless cross-device connectivity, while uniquely bridging the use of on-device and cloud-based processing. With this hybrid approach, users can benefit from AI features even when offline, while still maintaining top-of-the-line security over their data. Thanks to on-device AI, the intelligent Snapdragon platform learns from users over time, increasing productivity and creating optimized AI experiences.

With the addition of the Galaxy Book4 Edge, experiencing comprehensive AI enhancements across Samsung Galaxy devices has never been more accessible. Galaxy Book4 Edge is a Copilot+ PC,<sup>3</sup> transforming the way users interact with their devices by allowing users to be more productive and creative using simple, everyday language. Connect a mobile device to Galaxy Book4 Edge to experience Galaxy AI features on an even bigger, more immersive display with Link to Windows.<sup>4</sup> Mirror Circle to Search with Google<sup>5</sup> results on a PC display and paste them directly into files to work quickly and seamlessly. Galaxy Book4 Edge also brings fan-favorite features, Chat Assist<sup>6</sup> and Live Translate<sup>7</sup>, to the PC.

Samsung collaborated with Microsoft to bring Copilot in Windows to Galaxy Book, enabling the perfect mix of on-device and cloud-based AI for the best experience. For everyday actions such as setting alarms, retrieving contacts, sending messages, and more, users can access their mobile devices via Copilot voice prompts. Copilot also supports intelligent, next-step action suggestions for increased productivity.

---

<sup>1</sup> Samsung does not make any promises, assurances or guarantees as to the accuracy, completeness or reliability of the output provided by AI features. Samsung Galaxy phone (One UI 6.1 or later) and Link to Windows/Phone Link connection required for Galaxy AI features on PC. Samsung and/or Microsoft account login may be required to use/connect select Samsung AI features on PC. Feature availability may vary by application and model. Different terms may apply for AI features provided by third parties.

<sup>2</sup> Actual speed may vary by market, carrier and user environment. Wi-Fi 7 availability may vary due to OS version, market, location, network conditions and other factors. Wi-Fi 7 wireless network routers required and sold separately.

<sup>3</sup> Copilot in Windows has specific system requirements and is available in select global markets. Functionality may be limited.

<sup>4</sup> Users must link their Samsung Galaxy device (One UI 6.1 or later) to their Windows PC through Link to Windows on phone and the Microsoft Phone Link app on PC and follow the set-up prompts, including being signed into the same Microsoft account. Link to Windows is preloaded on select Samsung Galaxy devices. PC (Microsoft Phone Link app) requires Windows 10 or above. Microsoft Phone Link recommends Samsung Galaxy device to be on the same Wi-Fi network as the PC. Some mobile apps may restrict content to be shared on other screens. Some related features may vary by model.

<sup>5</sup> Results may vary depending on visual matches. Requires internet connection. Users may need to update Android to the latest version. Product functionality may be dependent on your app and device settings. Some functions may not be compatible with certain apps. Availability of the service varies by market and language. Accuracy of results is not guaranteed.

<sup>6</sup> Samsung Galaxy phone (One UI 6.1 or later) and Link to Windows/Phone Link connection required for Galaxy AI features on PC. Tone suggesting feature in Chat Assist requires a network connection and Samsung Account login. Must meet length requirements to activate feature. Service availability may vary by language. Accuracy of results is not guaranteed. Translating feature in Chat Assist may require Samsung Account login. Some chat applications may not support this feature. Certain languages may require language pack download. Service availability may vary by language. This feature is activated when a translatable language is detected. Accuracy of results is not guaranteed.

<sup>7</sup> Samsung Galaxy phone (One UI 6.1 or later) and Link to Windows/Phone Link connection required for Galaxy AI features on PC. Live Translate requires a network connection and Samsung Account login. Live Translate is only available on the pre-installed Samsung Phone app. Certain languages may require language pack download. Service availability may vary by language. Accuracy of results is not guaranteed.



## **Get More Done, Faster**

The Galaxy Book4 Edge is a continuation of Samsung's legacy in providing best-in-class experiences through premium hardware expertly tuned with cutting-edge software. Designed from the ground up for AI, the Galaxy Book4 Edge introduces the next generation of AI PCs – putting a broad scope of AI in users' hands and empowering them to accomplish more with less effort. With 45 TOPS NPU processing power, the Snapdragon® X Elite processor equips the Galaxy Book4 Edge with unmatched performance for accelerated AI capabilities across all functions. Powered by the fastest, most powerful Snapdragon processor on a laptop, Galaxy's on-device AI technology will continuously improve, ensuring a seamless and responsive experience.

Searching for documents, emails or web pages on your PC can be time consuming. With Recall,<sup>8</sup> now you can just describe the clues you remember to find it. Or, search across time to find the content you need and re-engage with it.

In today's hybrid work environment, video calls are a daily occurrence, and Galaxy Book4 Edge helps defy language barriers with international colleagues, friends, and family. Live Captions<sup>9</sup> provide accurate subtitles in real time. If there are spoken words, regardless of the application, turn them into English subtitles in real time on your screen.

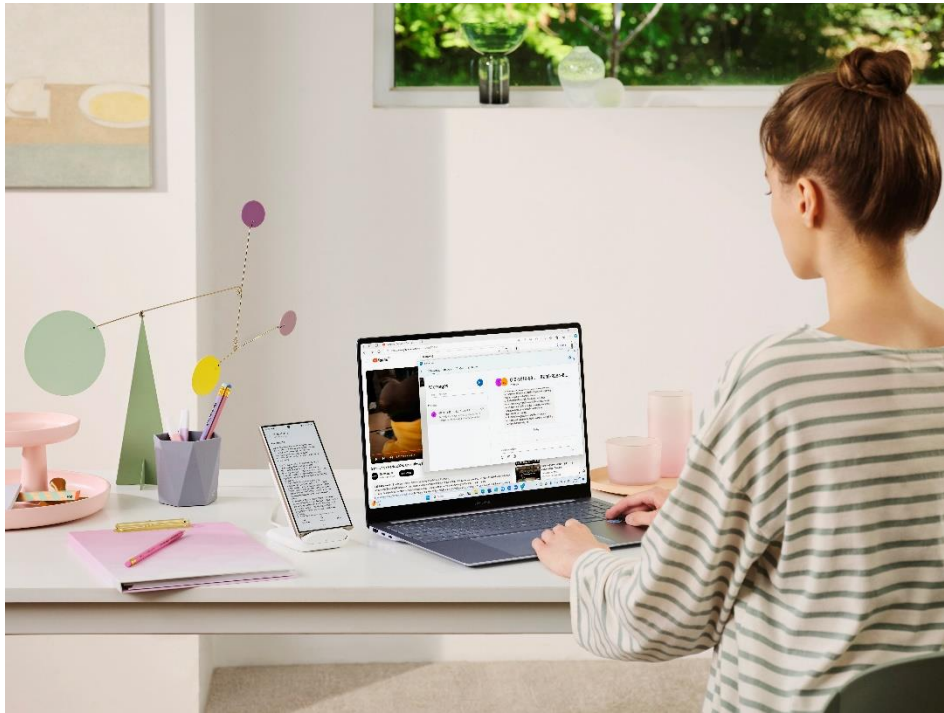
Galaxy Book4 Edge is designed to make workflows more comprehensive than ever, backed by incredibly efficient, 4x faster AI processing thanks to the Snapdragon X Elite compute platform.<sup>10</sup> Move between applications and commands seamlessly with the device's dedicated AI key,

<sup>8</sup> Optimized for select languages including English, Chinese (simplified), French, German, Japanese and Spanish. Content-based and storage limitations apply.

<sup>9</sup> Currently supports translation for video and audio subtitles into English from 40+ languages. See [<https://aka.ms/nextgenaipcs>].

<sup>10</sup> AI processing power compared to Galaxy Book4 Pro.

activating AI capabilities with a simple keystroke. And while using Galaxy Book4 Edge, count on all-day battery life, up to 22 hours of video playback time,<sup>11</sup> and Super-Fast Charging.<sup>12</sup>



### **Unlock Creative Potential Anytime, Anywhere**

Samsung Galaxy users can now enjoy an even larger suite of tools for creators. Galaxy Book4 Edge with Cocreator uses AI to transform creative pursuits. Turn sketches and text into fine art, or input text prompts to create entirely new designs.

Take creativity on video calls to the next level with Windows Studio effects. Make video conferences a bit more fun by experimenting with camera filters and background effects powered by on-device AI, or enjoy voice focus, portrait blur and eye contact.

Galaxy Book4 Edge's premium display and design upgrades make it even easier to be fully immersed in creative pursuits. Vision Booster delivers improved outdoor visibility and the anti-reflective<sup>13</sup> 10-point multi-touch touchscreen dramatically reduces glare alongside the Dynamic AMOLED 2X<sup>14</sup> display. Its ultra-thin and light design ensures users have the freedom to create whenever, and wherever creativity strikes. An adaptive refresh rate of up to 120Hz also delivers a remarkable display alongside cinema-grade brightness and color standards.

---

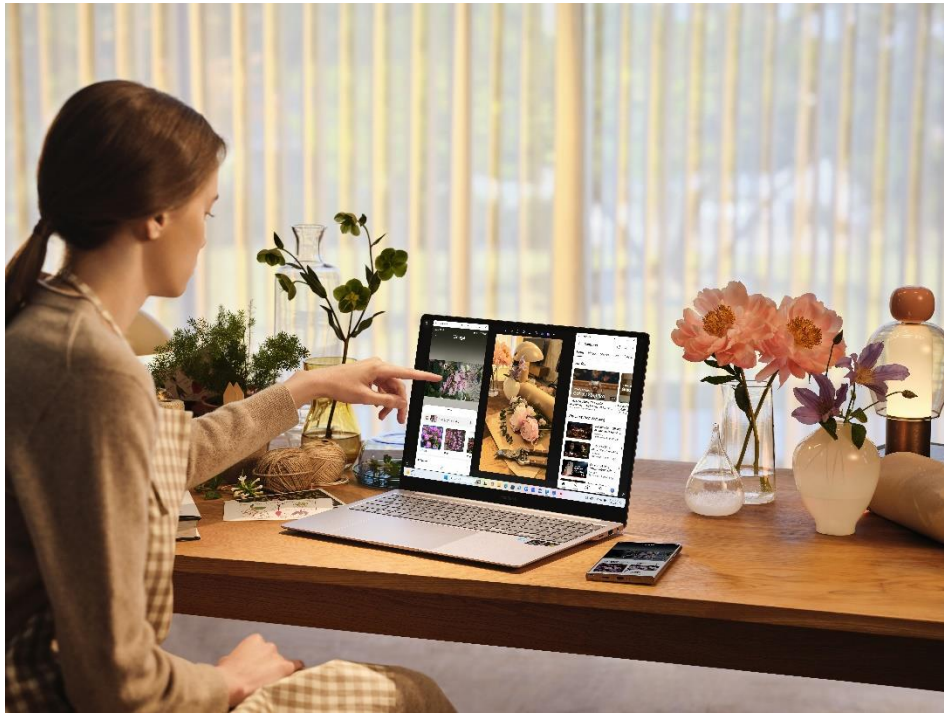
<sup>11</sup> For 16-inch model. Actual battery life may vary depending on model, network environment, usage patterns and other factors.

<sup>12</sup> For 16-inch model, device charges up to 40% in 30-minutes.

<sup>13</sup> Corning® Gorilla® Glass with DX delivers both antireflective optics and improved abrasion resistance. Corning's glass composite enhances display readability through a 75% improvement in front surface reflection, versus standard cover glass, and increases the display contrast ratio by 50% with the same display brightness.

<sup>14</sup> The Dynamic AMOLED 2X display used in Galaxy Book4 Edge has received the "Cinematic Experience" certification from SGS based on its wide color Volume (120% of DCI-P3) and its low-luminance expression capability below 0.0005 nits. The display has maximum brightness of 400 nits and can achieve peak brightness of 500 nits when displaying HDR content only, with a 1,000,000:1 contrast ratio. The Dynamic AMOLED 2X display used in Galaxy Book4 Edge has received the "Eye Care" certification from SGS based on its ability to drastically reduce the harmful effects of blue light.

With Auto Super Resolution, the Galaxy Book4 Edge does not compromise graphics, delivering high-definition and high frame graphics that upscale games in real-time.<sup>15</sup>



### **Trusted Security, Backed by Samsung Knox and Microsoft**

Secured by Samsung Knox, Samsung's defense-grade, multi-layer security platform, Galaxy Book4 Edge safeguards critical on-device information and protects against vulnerabilities with secure hardware, real-time threat detection, and collaborative protection. And as a Microsoft Secured-core PC out of the box, Windows customers can feel confident in the advanced safeguarding of firmware that comes with the highest level of Windows 11 protection.

With on-device AI, select Galaxy AI and Copilot+ features process user functions without uploading data to the cloud, protecting user privacy. For Recall, your snapshots are yours. They stay local on your PC and you can use easy controls to delete, adjust and filter what content is saved. You are always in control with privacy you can trust. For features that require cloud-based AI activity, Microsoft's suite of security features offer around the clock protection. Device Privacy Settings further embody Samsung Galaxy's commitment to give users choice over their device and AI safeguards.

---

<sup>15</sup> Available at initial launch in limited number of games available through the Xbox app in Windows PC.



## **Ready for the Future of Business**

With the enhanced security of Samsung Knox, Galaxy Book4 Edge gives businesses an entry point to integrate AI-functionality into their organizations, helping them to take the next steps in their technology roadmaps. Businesses can now securely provide their employees with AI-driven functionality that will make it easier to do their jobs. For example, employees can use natural language to quickly locate documents and easily discover related files to the task at hand for a comprehensive workflow; remove language barriers with colleagues with Live Captions translation of video calls; and finally have their own personal assistant that can help make calls, send texts, and stay in touch on the go. These advanced AI capabilities empower users with intelligent features that improve productivity and enable intuitive multitasking.

## **Availability**

The Galaxy Book4 Edge will be available in select markets including France, Germany, Italy, Korea, Spain, the UK and the U.S. starting June 18, 2024.<sup>16</sup> The 14-inch and 16-inch size options come with an enhanced refined finish for a sleek, premium feel, created from a wide variety of recycled materials, including plastics, glass and aluminum.<sup>17</sup>

For more information about Galaxy Book4 Edge, please visit: <https://www.samsung.com/galaxy-book/>.

---

<sup>16</sup> Availability and timing will vary by region.

<sup>17</sup> The Galaxy Book4 Edge features a minimum of 20% post-consumer recycled plastic sourced from discarded fishing nets in the Case Upper Inner Down, a minimum of 20% post-consumer recycled plastic sourced from discarded water barrels in the Cover Hinge, Case Front Vent, Case Front Inner Left, Case Front Inner Right, Case Upper Inner Up, Case Rear Inner Left, Case Rear Inner Right, Case Rear Inner Up, Case Rear Inner Down and Cover Foot, a minimum of 10% pre-consumer recycled plastic sourced from discarded by-product of shoes manufacturing in the Lens-LED, a minimum of 30% pre-consumer recycled aluminum in the Case Rear, a minimum of 20% pre-consumer recycled aluminum in the Case Upper, Case Front and a minimum of 40% pre-consumer recycled glass in the Touchpad Glass. The above measurements are based on weight.

## **About Samsung Electronics Co., Ltd.**

Samsung inspires the world and shapes the future with transformative ideas and technologies. The company is redefining the worlds of TVs, smartphones, wearable devices, tablets, home appliances, network systems, and memory, system LSI, foundry and LED solutions, and delivering a seamless connected experience through its SmartThings ecosystem and open collaboration with partners. For the latest news, please visit the Samsung Newsroom at [news.samsung.com](https://news.samsung.com).

### **SPECIFICATION TABLE**

	<b>Galaxy Book4 Edge (14-inch)</b>	<b>Galaxy Book4 Edge (16-inch)</b>
<b>Dimensions*</b>	312.3 x 223.8 x 10.9mm	355.4 x 250.4 x 12.3mm
	<i>*Accuracy of numbers may vary depending on measurements used.</i>	
<b>Weight*</b>	1.16 kg	1.55 kg
	<i>*Weight may vary by market.</i>	
<b>OS*</b>	Windows 11 Home	
	<i>*Edition version and availability timing may vary depending on model and/or market.</i>	
<b>Display</b>	14-inch**, 16:10 AMOLED 3K (2880x1800), 500nits (HDR)*, Up to 120Hz VRR, 120% DCI-P3 Color Volume, 10-Point Multi-Touch	16-inch*, 16:10 AMOLED 3K (2880x1800), 500nits (HDR)*, Up to 120Hz VRR, 120% DCI-P3 Color Volume, 10-Point Multi-Touch
	<i>*400nits (Typ), 500nits (HDR Contents Only).</i>	
	<i>**Measured diagonally as a full rectangle without accounting for the rounded corners. Actual viewable area is less due to the rounded corners.</i>	
<b>Processor*</b>	Snapdragon® X Elite X1E-80-100	Snapdragon® X Elite X1E-84-100 Snapdragon® X Elite X1E-80-100
	<i>*Specifications may vary depending on model and/or market.</i>	
<b>NPU</b>	Qualcomm® Hexagon™ NPU	Qualcomm® Hexagon™ NPU
<b>Graphic*</b>	Qualcomm® Adreno™ GPU	Qualcomm® Adreno™ GPU
	<i>*Specifications may vary depending on model and/or market.</i>	
<b>Network*</b>	Wi-Fi 7 / Wi-Fi 6E (Korea)	
	<i>*Actual speed may vary by market, carrier and user environment. Wi-Fi 7 availability may vary due to OS version, market, location, network conditions and other factors. Wi-Fi 7 wireless network routers required and sold separately.</i>	
<b>Color</b>	Sapphire Blue	
<b>Memory*</b>	16 GB	
	<i>*Availability may vary by model.</i>	

<b>Storage</b>	512 GB / 1TB	
	*Availability may vary by model and/or market. *Actual storage space availability may vary depending on pre-installed software and by market, file size and format.	
<b>Camera</b>	2MP (1080p FHD)	
<b>Microphone / Speaker</b>	Dual Microphones / Quad Speaker (Woofer Max 4W x 2, Tweeter Max 2.7W x 2), Dolby Atmos®	Dual Microphones / Quad Speaker (Woofer Max 5W x 2, Tweeter Max 2W x 2), Dolby Atmos®
<b>Keyboard*</b>	Pro Keyboard (Backlit)	Pro keyboard with Numeric key (Backlit)
	*Keyboard layout may vary by market.	
<b>Battery*</b>	55.9 Wh (Typical)	61.8 Wh (Typical)
	*Typical value of battery capacity tested under third-party laboratory condition. Typical value is the estimated average value considering the deviation in battery capacity among the battery samples tested under IEC 61960 standard. Actual battery life may vary depending on network environment, usage patterns and other factors.	*Typical value of battery capacity tested under third-party laboratory condition. Typical value is the estimated average value considering the deviation in battery capacity among the battery samples tested under IEC 61960 standard. Actual battery life may vary depending on network environment, usage patterns and other factors.
<b>Charging*</b>	65W USB Type-C Adapter	
	*The inbox charger and data cable are USB Type-C.	
<b>Port*</b>	2 x USB4.0, HDMI 2.1 (Supports 4K@60Hz), Headphone out/Mic-in Combo	2 x USB4.0, USB 3.2, HDMI 2.1 (Supports 4K@60Hz), Micro SD, Headphone out/Mic-in Combo
	*Actual speed of USB may vary depending on user environment.	

\*Specifications may vary by market.

\*All functionality, features, specifications and other product information provided in this document including, but not limited to, the benefits, design, pricing, components, performance, availability and capabilities of the product are subject to change without notice.