

## PERFORMANCE

### Processor

Intel® Core™ i9-14900, 24C (8P + 16E) / 32T, Max Turbo up to 5.8GHz, P-core 2.0 / 5.4GHz, E-core 1.5 / 4.3GHz, 36MB

### Processor Sockets

1x FCLGA1700

### Integrated Graphics

Integrated Intel® UHD Graphics 770

### Discrete Graphics

1x NVIDIA® T400 4GB

### Chipset

Intel® Q670 Chipset

### Memory

1x 16GB SO-DIMM DDR5-5600 Non-ECC

### Memory Slots

Two DDR5 SO-DIMM slots, dual-channel capable

### Max Memory<sup>[1]</sup>

Up to 64GB (2x 32GB DDR5 SO-DIMM)

### PCIe® NVMe® Controller

Integrated NVMe® controller

### PCIe® NVMe® Drive

1x 512GB SSD M.2 2280 PCIe® 4.0x4 Performance NVMe® Opal

### Storage Support<sup>[2]</sup>

Up to two drives, 2x M.2 SSD, up to 2TB each

### Optical

None

### Audio Chip

High Definition (HD) Audio, Realtek® ALC256VB codec

### Power Supply

300W 90% Adapter

## DESIGN

### Keyboard

USB Traditional Keyboard, Black, English

### Mouse

USB Calliope Mouse, Black

### Expansion Slots<sup>[3]</sup>

One PCIe® 4.0 x8, low-profile

### M.2 Slots

- Two M.2 PCIe® Gen 4x4 slots (for SSD)
- One M.2 slot (for WLAN)

### Bays

No bays

### Dust Filter

None

### Toolless Chassis Screw

Toolless Chassis Screw

### Mounting

1x VESA Mount

### Stand

None

### Dimensions (WxDxH)<sup>[4]</sup>

- Tiny only | 179 x 182.9 x 37mm with rubber feet (7.0 x 7.2 x 1.5 inches with rubber feet)
- Tiny & ODD | 204.2 x 186.6 x 64 mm with rubber feet (8.04 x 7.35 x 2.52 inches with rubber feet)

### Weight<sup>[5]</sup>

1.4 kg (3 lbs, maximum configuration)

## CONNECTIVITY

### Onboard Ethernet

Intel® I219-LM, 1x GbE RJ-45

### Optional Ethernet

None

### WLAN + Bluetooth<sup>[6]</sup>

Intel® Wi-Fi® 6E AX211, 11ax 2x2 + BT5.1, vPro®

### Front Ports

- 1x USB-C® (USB 10Gbps / USB 3.2 Gen 2), data transfer only
- 1x USB-A (USB 10Gbps / USB 3.2 Gen 2), Always On
- 1x USB-A (USB 10Gbps / USB 3.2 Gen 2)
- 1x headphone / microphone combo jack (3.5mm)

### Rear Ports<sup>[7]</sup>

- 2x USB-A (USB 10Gbps / USB 3.2 Gen 2)
- 2x USB-A (USB 5Gbps / USB 3.2 Gen 1), one supports Smart Power On
- 1x HDMI® 2.1 TMDS
- 1x DisplayPort™ 1.4
- 1x Ethernet (RJ-45)

### Optional Rear Ports (configured)

None

## SECURITY & PRIVACY

### Security Chip

Discrete TPM 2.0, TCG certified, FIPS 140-2 certified

### Physical Locks

Kensington® Security Slot™, 3 x 7 mm

### Cable Lock

No Cable

### Chassis Intrusion Switch

Chassis Intrusion Switch

## MANAGEABILITY

### System Management<sup>[8]</sup>

Intel® vPro® Enterprise with Intel® AMT 16

## SERVICE

### Base Warranty

3-year, Onsite

### Included Upgrade

3Y Premier Support Upgrade from 3Y Onsite

## CERTIFICATIONS

### Case Color

Black

### Green Certifications<sup>[9]</sup>

- ENERGY STAR® 8.0
- EPEAT™ Gold Registered
- ErP Lot 3
- RoHS compliant
- TCO Certified 9.0

### ISV Certifications

Please visit [ISV certifications for Lenovo® Workstations](#)

### Mil-Spec Test

MIL-STD-810H military test passed

## SOFTWARE

### Operating System

Windows® 11 Pro, English

### Bundled Software

None

## MODEL

**TopSeller** : Yes **Announce Date** : 2024-04-09

**EAN / UPC / JAN** : 198153626267 **End of Support** : 2031-04-30

Note:

<sup>[1]</sup> The max memory is based on the test results with current Lenovo memory offerings.

<sup>[2]</sup> The storage capacity supported is based on the test results with current Lenovo storage offerings.

<sup>[3]</sup> Supports discrete graphic card by x16 riser card (x8 signal), and supports Ethernet card / Thunderbolt 4 / serial card by x4 riser card. Riser card comes with the expansion cards.

<sup>[4]</sup> The system dimensions may vary depending on configurations.

<sup>[5]</sup> The system weight is approximate and based on results in.....

· Lenovo reserves the right to change specifications without notice.

To see more note information, please link to

<https://psref.lenovo.com/Detail/2231?M=30H0006SUS>

## Premier Support - A direct 24x7x365 line to our most elite technicians.



Advanced technical support, 24x7x365, in more than 100 markets



Technical Account Managers for proactive relationship and escalation management



Comprehensive hardware & OEM software support



Priority on service delivery and repair parts



Single point of contact for simplified end-to-end case management



Lenovo Service Connect Portal for customized reporting and product support

## Accidental Damage Protection - Protection of your PC from the unexpected.

Experience shows that a significant portion of devices may be damaged (and not covered under warranty) in the first three years. Lenovo's Accidental Damage Protection service covers accidents beyond the system warranty such as drops, spills, bumps and even electrical surges. Make sure your new device has maximum protection, avoid unplanned costs and get peace of mind.

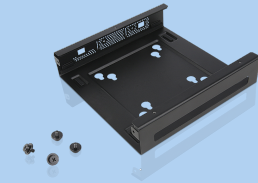
## Base Warranty - Included with the systems you purchase, default 1- or 3-year coverage window.

## Warranty Extensions & Upgrades - Service and protection that's right for your circumstances.

- Pick Up & Return Courier
- Onsite Support
- Technician Installed Customer
- Replaceable Unit Service
- International Warranty Upgrade

Lenovo may not offer the products, services or features discussed in this document in all regions. Lenovo may withdraw an offering at any time. Information is subject to change without notice. Consult your local representative for information on offerings available in your area. Lenovo reserves the right to change specifications or other product information without notice. Lenovo is not responsible for photographic or typographical errors. Lenovo provides this publication "as is" without warranty of any kind, either express or implied, including the implied warranties of merchantability or fitness for a particular purpose.

## Recommended Accessories



### ThinkCentre Tiny VESA Mount II

4XFON03161

The ThinkCentre Tiny VESA Mount II is a unique design specific to house the Tiny PC while featuring the universal VESA mount configuration. The VESA standard enables this mount to attach to anything that is VESA comp...

## Recommended Services

BEST	4Y Premier Support Plus upgrade from 3Y Premier Support (5WS1L39058)
BETTER	3Y Premier Support Plus upgrade from 3Y Premier Support (5WS1L39322)
GOOD	4Y Premier Support upgrade from 3Y Premier Support (5WS0W86700)

For a full list of accessories and services, please visit:  
<https://smartfind.Lenovo.com>



**PSREF**  
Product Specifications  
Reference