

## PERFORMANCE

### Processor

AMD Ryzen™ 5 PRO 8640HS (6C / 12T, 3.5 / 4.9GHz, 6MB L2 / 16MB L3)

### Graphics

Integrated AMD Radeon™ 760M Graphics

### Chipset

AMD SoC Platform

### Memory

2x 16GB SO-DIMM DDR5-5600 Non-ECC

### Memory Slots

Two DDR5 SO-DIMM slots, dual-channel capable

### Max Memory

Up to 96GB (2x 48GB DDR5 SO-DIMM)

### Storage

1TB SSD M.2 2280 PCIe® 4.0x4 Performance NVMe® Opal 2.0

### Storage Support<sup>[1]</sup>

One drive, up to 2TB M.2 2280 SSD

### Storage Slot

One M.2 2280 PCIe® 4.0 x4 slot

### Card Reader

No card reader

### Audio Chip

High Definition (HD) Audio, Realtek® ALC3287 codec

### Speakers

Stereo speakers, 2W x2, Dolby Audio™

### Camera

5.0MP + IR with Privacy Shutter and Human Presence Detection

### Microphone

2x, Array

### Battery

Integrated 52.5Wh

### Power Adapter

65W USB-C® Slim (2-pin)

## DESIGN

### Display

14" WUXGA (1920x1200) IPS 400nits Anti-glare, 100% sRGB, Low Power

### Color Calibration

ICC Template Color Calibration

### Keyboard

Backlit, English

### Case Color

Black

### Case Material

PC / 50% GF with 30% PCC + PC / 20% CF (Top), PC / 40% GF with 45% PCC (Bottom)

### Dimensions (WxDxH)<sup>[2]</sup>

315.9 x 223.7 x 17.7 mm (12.44 x 8.81 x 0.70 inches)

### Weight<sup>[3]</sup>

Starting at 1.31 kg (2.89 lbs)

## SOFTWARE

### Operating System

Windows® 11 Pro, English

## CONNECTIVITY

### Ethernet

100/1000M (RJ-45)

### WLAN + Bluetooth<sup>[4]</sup>

Qualcomm® Wi-Fi® 6E NFA725A, 11ax 2x2 + BT5.3

### WWAN

WWAN Upgradable to 4G or 5G

### Standard Ports

- 1x USB-A (USB 5Gbps / USB 3.2 Gen 1)
- 1x USB-A (USB 5Gbps / USB 3.2 Gen 1), Always On
- 2x USB-C® (Thunderbolt™ 4 / USB4® 40Gbps), with USB PD 3.0 and DisplayPort™ 1.4
- 1x HDMI® 2.1, up to 4K/60Hz
- 1x Headphone / microphone combo jack (3.5mm)
- 1x Ethernet (RJ-45)
- 1x Security keyhole

### Optional Ports (configured)

1x Nano-SIM Card Slot

### Docking

Various docking solutions supported via side docking connector, Thunderbolt™ or USB-C®.

For more compatible docking solutions, please visit [Docking for ThinkPad® P14s Gen 5 \(AMD\)](#)

## SECURITY & PRIVACY

### Security Chip

Discrete TPM 2.0 Enabled

### Fingerprint Reader

Touch Style, Match-on-Chip, Integrated in Power Button

### Physical Locks

Kensington® Nano Security Slot™, 2.5 x 6 mm

### Other Security

- IR camera for Windows® Hello (facial recognition)
- Ultrasonic Human Presence Detection for IR camera
- Camera privacy shutter
- Bottom cover tamper detection

## MANAGEABILITY

### System Management

AMD PRO Manageability

## SERVICE

### Base Warranty

3-year, Courier or Carry-in

### Included Upgrade

3Y Premier Support Upgrade from 3Y Courier/Carry-in

## CERTIFICATIONS

### Green Certifications

- ENERGY STAR® 8.0
- EPEAT™ Gold Registered
- RoHS compliant
- TCO Certified 9.0

### Other Certifications

- Eyesafe® Certified 2.0
- TÜV Rheinland® Low Blue Light

### Mil-Spec Test

MIL-STD-810H military test passed

### ISV Certifications

Please visit [ISV certifications for Lenovo® Workstations](#)

## MODEL

**TopSeller** : Yes **Announce Date** : 2024-05-14

**EAN / UPC / JAN** : 198153476510 **End of Support** : 2030-12-14

Note:

<sup>[1]</sup> The storage capacity supported is based on the test results with current Lenovo storage offerings.

<sup>[2]</sup> The system dimensions may vary depending on configurations.

<sup>[3]</sup> The system weight is approximate and based on results in Lenovo lab, which varies depending on the source of component, variance of the distribution of each component, and manufacturing process. It may not be the exact weight for each specific model.

<sup>[4]</sup> Wi-Fi 6E full features might be limited by country-level.....

· Lenovo reserves the right to change specifications without notice.

· California Electronic Waste Recycling Fee In California, per state law, Lenovo charges an electronic waste recycling fee on this covered device at the time of sale of the product. For more information, go to: <https://www.calrecycle.ca.gov/Electronics/Consumer>

To see more note information, please link to

<https://psref.lenovo.com/Detail/2488?M=21ME000YUS>

## Premier Support - A direct 24x7x365 line to our most elite technicians.



Advanced technical support, 24x7x365, in more than 100 markets



Technical Account Managers for proactive relationship and escalation management



Comprehensive hardware & OEM software support



Priority on service delivery and repair parts



Single point of contact for simplified end-to-end case management



Lenovo Service Connect Portal for customized reporting and product support

## Accidental Damage Protection - Protection of your PC from the unexpected.

Experience shows that a significant portion of devices may be damaged (and not covered under warranty) in the first three years. Lenovo's Accidental Damage Protection service covers accidents beyond the system warranty such as drops, spills, bumps and even electrical surges. Make sure your new device has maximum protection, avoid unplanned costs and get peace of mind.

## Base Warranty - Included with the systems you purchase, default 1- or 3-year coverage window.

## Warranty Extensions & Upgrades - Service and protection that's right for your circumstances.

- Pick Up & Return Courier
- Onsite Support
- Technician Installed Customer
- Replaceable Unit Service
- International Warranty Upgrade

Lenovo may not offer the products, services or features discussed in this document in all regions. Lenovo may withdraw an offering at any time. Information is subject to change without notice. Consult your local representative for information on offerings available in your area. Lenovo reserves the right to change specifications or other product information without notice. Lenovo is not responsible for photographic or typographical errors. Lenovo provides this publication "as is" without warranty of any kind, either express or implied, including the implied warranties of merchantability or fitness for a particular purpose.

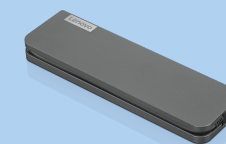
## Recommended Accessories



### ThinkPad Universal USB-C Dock

40AY0090US

THE SMARTER WAY TO WORK Introducing the ThinkPad Universal USB-C Dock. This advanced, universally compatible one-cable docking solution lets you work smarter, not harder. It comes with a vast array of ports, next-gen ...



### Lenovo USB-C Mini Dock\_US

40AU0065US

Expand Your Potential with An Universal Mini Dock; Lenovo understands that modern business depends on a wide variety of PC's and even brands to meet their business needs. To make this easier Lenovo USB-C Mini dock is ...

For a full list of accessories and services, please visit:  
<https://smartfind.Lenovo.com>

Lenovo

PSREF  
Product Specifications  
Reference