

M2.1 / M8.1 / M10 Monitor Arms



IN TODAY'S FAST-PACED, agile workspace, there's no time for discomfort. Humanscale's next generation monitor arm line instantly personalizes any workstation for improved comfort, health and productivity. Designed for unprecedented adaptability, our monitor arms focus on ergonomics and the use of technology, while featuring ultra-sleek aesthetics.

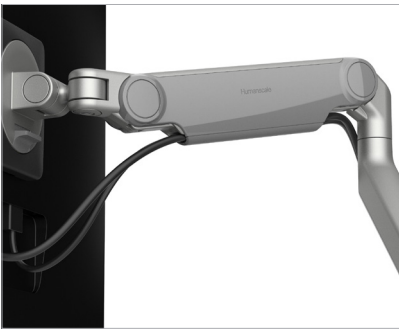


Design Story

Humanscale Design Studio refreshed the look and functionality of our monitor arm line to support how we work today. With more technology than ever before and increasingly agile workforces, our arms enhance the computing experience and overall workstation performance.

Features & Benefits

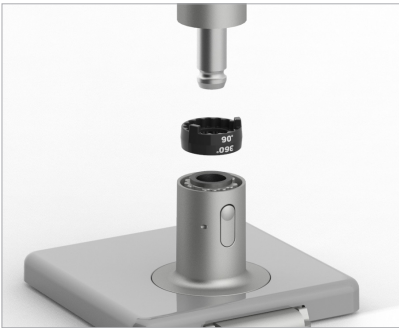
- Our monitor arms allow the user to place their screen(s) at an optimal ergonomic position
- Flexible rubber channels easily hide, protect, and manage your cables
- A patented, weight-compensating spring technology enables smooth and uniform height adjustment
- A built-in Counterbalance Indicator provides the ability to counterbalance the monitor weight before monitor installation to reduce expensive computer set-up costs
- Patent-pending Smart Stop allows the user to customize the rotation of the arm, preventing overhang and protecting surrounding equipment
- Patent-Pending Quick Release Joints instantly snap together for a secure and robust fit, simplifying installation. Only one tool is required, and its neatly concealed inside the arm base
- M10's triple crossbar can be configured to hold up three monitors
- Compatible with M/Connect 2 and M/Power integrated docking stations, to conveniently bring power and data directly to the user
- Optional Accessory Holder holds items up to 3 lbs.



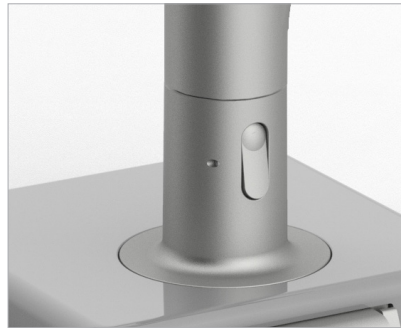
Rubberized Cable Management



Counterbalance Indicator



Smart Stop



Quick Release Joints







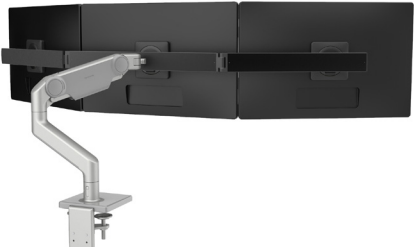
Accessory Holder (optional)



M/Connect 2 Docking Station



Specifications

Monitor Weight Capacity	<p>Standard Single or Dual Monitors 5 -15.5 lbs</p>  <p>M2.1</p>	
	<p>Single 6 - 28 lbs</p>  <p>M8.1</p>	<p>Dual Crossbar holds up to 12.5 lbs per monitor</p> 
	<p>Heavy Single up to 20 - 48lbs</p>  <p>M10</p>	<p>Triple Crossbar holds up to 10.5 lbs per monitor</p> 
Height Adjustment	<p>M2.1 6.7" - 17.1" M8.1 7.6" - 17.7" M10 7.6" - 17.7"</p>	
Color Options	<p>Polished Aluminum with White Trim Silver with Gray Trim Black with Black Trim</p>	
Warranty	<p>M2.1 and M8.1: 15 year, 24/7 M10: 10 year, 24/7</p>	

Environmental Story

Humanscale’s line of expertly engineered monitor arms ship unassembled to dramatically reduce packaging size – while still being quickest to install. Modular links allow users to design the most productive space without additional parts, which saves resources. This means that Humanscale monitor arms require far less energy, resources and processes to get from factory to office. We consider the impact of our products on people both during manufacturing and when they are in use. Humanscale monitor arms are built with sustainable, non-toxic materials, and their durable design ensures that they won’t need to be replaced for many years.