

Panasonic CONNECT



Professional DISPLAYS Line-up Catalog October 2023



Worldwide Olympic and Paralympic Partner



Panasonic Professional Displays Lineup

High Brightness

SQ1H Series

1200cd/m²
*TH-75SQ1H: 1500 cd/m²

86" 75"

TH-86SQ1HW TH-75SQ1HW



*Actual resolution : 3840 x 2160p

Standard

Preliminary Available from CY2023 Q4

SQ2H Series

700cd/m²

98" 86" 75" 65"

TH-98SQ2HW TH-86SQ2HW TH-75SQ2HW TH-65SQ2HW

55" 50" 43"

TH-55SQ2HW TH-50SQ2HW TH-43SQ2HW



*Actual resolution : 3840 x 2160p

SQE2 Series

500cd/m²

98" 86" 75" 65"

TH-98SQE2W TH-86SQE2W TH-75SQE2W TH-65SQE2W

55" 50" 43"

TH-55SQE2W TH-50SQE2W TH-43SQE2W



*Actual resolution : 3840 x 2160p

Standard

EQ2 Series

500cd/m²

86" 75"

TH-86EQ2W TH-75EQ2W

65" 55"

TH-65EQ2W TH-55EQ2W

50" 43"

TH-50EQ2W TH-43EQ2W



*Actual resolution : 3840 x 2160p



Entry

CQE2 Series

500cd/m²

*TH-86CQE2/75CQE2: 400 cd/m²

98" 86"

TH-98CQE2W TH-86CQE2W

75" 65"

TH-75CQE2W TH-65CQE2W

55" 50"

TH-55CQE2W TH-50CQE2W

43"

TH-43CQE2W



*Actual resolution : (98CQE2 only) 3840 x 2160p



* The availability varies depending on model.

★ The playable application format, GUI and operation procedure for the SQE2 and CQE2 Series' Media Player function are different from those of other models.

Panasonic Professional Displays Lineup

Video Wall

VF2H 700cd/m² **55"** TH-55VF2HW

VF2 500cd/m² **55"** TH-55VF2W

LFV9 500cd/m² **55"** TH-55LFV9W

(VF2H/VF2 only) (LFV9 only) (VF2H/VF2 only) (VF2H/VF2 only) (LFV9 only)

Pict Descriptions

 4K display (Actual resolution: 3840 x 2160p)	 Capable of 24-hour continuous operation	 Capable of 18-hour continuous operation	 Capable of 16-hour continuous operation	
 CAT5e or higher STP cable transmits Full-HD video, audio, and control signals	 CAT5e or higher STP cable transmits 4K video, audio, and control signals	 Using a DisplayPort daisy chain connection to output a 4K image onto a 2x2 video wall	 USB media player	 USB media player supporting 4K images
 Equipped with protective glass for LCD panel	 Capable of finger writing on LCD screen, and touch operation	 LCD panel usable as a touch panel	 Bezel-to-bezel thickness	
 Portrait installation possible	 To transmit video and voice data in a Windows PC or Android device to the display in the wireless mode.	 Intel® SDM specification compatible slot	 Enlarge a horizontal video with three vertical displays.	

PressIT Wireless Presentation System

 Receiver (Set-top-Box)	 Transmitter x 2 (USB Type-A/HDMI)	 Transmitter case	 Transmitter x 2 (USB Type-A/HDMI)	 Transmitter case
Basic set TY-WPS1			Transmitter set TY-WP2B1	
 Receiver (Set-top-Box)	 Transmitter x 2 (USB Type-C)	 Transmitter case	 Transmitter x 2 (USB Type-C)	 Transmitter case
Basic set TY-WPSC1			Transmitter set TY-WP2BC1	
 Receiver TY-WPR1	 Receiver (Board) TY-SB01WP	 Transmitter (USB Type-A/HDMI) TY-WPB1	 Transmitter (USB Type-C) TY-WPBC1	

Peripherals

PressIT360 360 degree camera speakerphone

360 degree camera speakerphone
 TY-CSP1



Model Number Legend

F Full HD
 Q 4K UHD

TH-86SQ1

Display body: TH
 Screen size: 86
 S/L Standard
 E/C Entry
 V Video wall
 B Touch screen

SQ1H Series



Model no.	TH-86SQ1HW	TH-75SQ1HW	
DISPLAY PANEL	Screen Size (Diagonal)/Aspect Ratio	86-inch class (85.6"/2174.2mm)/16:9	75-inch class (74.5"/1892.7mm)/16:9
	Effective Display Area (W x H)	74.60" x 41.96" (1895.0 x 1065.9 mm)	64.94" x 36.53" (1649.6 x 927.9 mm)
	Resolution (H x V)	3840 x 2160	3840 x 2160
	Brightness (Typ)	1200 cd/m ²	1500 cd/m ²
	Contrast Ratio	1200:1	1200:1
	Dynamic Contrast Ratio	50000:1	50000:1
	Response Time	8.0 ms (G to G)	10.0 ms (G to G)
Viewing Angle (Horizontal/Vertical)	178° / 178° (CR>10)	178° / 178° (CR>10)	
Panel Surface Treatment	Anti-glare low reflection type (Haze 3 %)	Anti-Glare type (Haze 1 %)	
TERMINAL	HDMI In	HDMI TYPE-A connector x 2 (HDCP2.2 supported)	
	DisplayPort In	DisplayPort x 1 (HDCP2.2 supported)	
	DisplayPort Out	DisplayPort x 1 (HDCP1.4 supported)	
	DVI-D In	DVI-D 24-pin x 1	
	Audio In (L/R)	Stereo Mini Jack (Ø 3.5 mm) x 1 0.5 V [rms]	
	PC In	-	
	Audio In (L/R)	-	
	Audio Out	Stereo Mini Jack (Ø 3.5 mm) x 1 0.5 V [rms], Variable (-∞ - 0 dB) (1 kHz 0 dB Input, 10 k Ω Load)	
	Serial In	D-sub 9-pin x 1, RS-232C Compatible	
	LAN	RJ45 x 1 10BASE-T/100BASE-TX, Compatible with PLink™	
	DIGITAL LINK/LAN	RJ45 x 1 Compatible with Long reach mode and PLink™, 100BASE-TX (HDCP2.2)	
	IR In/Out	Stereo Mini Jack (Ø 3.5 mm) x 1 / x 1	
	USB	USB connector (TYPE A) x 2, DC 5 V/2 A, DC 5 V/1 A (USB3.0 is supported)	
Sensor	4-pole sub-mini jack (Ø 2.5 mm) x 1		
SLOT	Intel® SDM standard (3.3 V / max. 1.1 A, 12 V / max. 5.5 A)		
GENERAL	Power Requirements	110-127V AC, 50 Hz/60 Hz	
	Power Consumption	735 W	720 W
	Power Off Condition	Approx. 0.3 W	Approx. 0.3 W
	Stand-by Condition	Approx. 0.5 W	Approx. 0.5 W
	Dimensions (W x H x D) *Including handles.	75.95" x 43.31" x 3.75" (1929 x 1100 x 96 mm) ³	66.28" x 37.9" x 3.75" (1684 x 962 x 96 mm) ³
	Carton Size (W x H x D)	84.5" x 50.8" x 11.1" (2145 x 1290 x 280 mm)	73.7" x 45.0" x 11.1" (1870 x 1143 x 280 mm)
	Bezel Width	0.61" (15.5 mm) (T/B/L/R)	0.59" (14.9 mm) (T/B/L/R)
	Weight	Approx. 127.4 lbs. (57.8 kg)	Approx. 93.0 lbs. (42.2 kg)
	Gross Weight	Approx. 160.9 lbs. (73 kg)	Approx. 123.4 lbs. (56 kg)
	Pitch for Wall-Hanging	VESA Compliant 23.6" x 15.8" (600 x 400 mm) M8	VESA Compliant 23.6" x 15.8" (600 x 400 mm) M8
	Built-in Speaker	20 W [10 W + 10 W]	
	Orientation	Landscape/Portrait ⁴	
	Tilting Angle	Landscape: 0-20 degrees forward Portrait: 0-20 degrees forward	
	Operating Environment	Temperature: 32 °F to 104 °F (0 °C to 40 °C) ⁵ ; 32 °F to 95 °F (0 °C to 35 °C) ⁶ , Humidity: 20% to 80% (No condensation)	
	Storage Environment	Temperature: -4 °F to 140 °F (-20 °C to 60 °C), Humidity: 20 % to 80 % (No condensation)	
Operating Time ⁷	24 h/day		
OPTIONS	12G-SDI Terminal Board	TY-SB01QS	TY-SB01QS
	3G-SDI Terminal Board	-	TY-SB01SS
	Wireless Presentation System Receiver Board	TY-SB01WHP	TY-SB01WHP
	Wall-hanging Bracket	-	TY-WK98PV1
	Early Warning Software ⁸	ET-SWA100/105 Series	ET-SWA100/105 Series
	Digital Interface Box	-	-
	DIGITAL LINK Switcher	ET-YFB200G	ET-YFB200G
	Auto Display Adjustment Upgrade Kit ¹⁰	-	-

1: HDCP2.2 supported. 2: RGB/YpBp switchable. 3: Excluding handles. 4: When installing the display vertically, be sure that the power indicator comes to the right side.
5: For up to 4593 ft (1400 m) altitude. 6: For between 4593 ft to 9186 ft (1400 m to 2800 m) altitude.
7: In case of long time, the moving image is recommended to be displayed. If you display a still picture for an extended period, the image retention might remain on the screen. However, image retention can gradually disappear by displaying a moving images.
8: Part number suffix may differ depending on the license type.
9: Multi Monitoring & Control Software Ver.2.0 or later is required. Part number suffix may differ depending on the license type.
10: Download the latest Video Wall Manager from Global Website in advance. (<https://panasonic.net/cns/prodisplays/download/software/vwm/>)

SQ2H Series

Preliminary Available from CY2023 Q4

High Brightness

Standard



Model no.	TH-98SQ2HW	TH-86SQ2HW	
DISPLAY PANEL	Screen Size (Diagonal)/Aspect Ratio	98-inch class (97.51"/2476.9 mm)/16:9	86-inch class (85.60"/2174.2 mm)/16:9
	Effective Display Area (W x H)	TBD	TBD
	Resolution (H x V)	TBD	TBD
	Brightness (Typ)	700 cd/m ²	700 cd/m ²
	Contrast Ratio	1200:1	TBD
	Dynamic Contrast Ratio	TBD	TBD
	Response Time	TBD	TBD
Viewing Angle (Horizontal/Vertical)	178° / 178° (CR>10)	178° / 178° (CR>10)	
Panel Surface Treatment	Anti-Glare (Haze 25 %)	Anti-Glare (Haze 25 %)	
TERMINAL	HDMI™ In	HDMI TYPE A Connector x 3 (HDCP2.2 supported)	
	USB	USB Connector (TYPE-A) x 2, (Type-C) x 1, Internal (Type-A) x 1	
	PC In	Mini D-sub 15-pin x 1	
	Audio In (L/R)	Stereo Mini Jack (M3) x 1	
	Audio Out	Stereo Mini Jack (M3) x 1	
	Serial In	D-sub 9-pin x 1, RS-232C Compatible	
	LAN	RJ45 x 1 compatible with PLink™ 10BASE-T/100BASE-TX	
	IR In	Stereo Mini Jack (M3) x 1	
	SLOT	Intel® SDM standard (3.3 V / max. 1.1 A, 12 V / max. 5.5 A)	
	GENERAL	Power Requirements	110-127 V AC, 50 Hz/60 Hz
Power Consumption		TBD	TBD
Power Off Condition		0 W	
Stand-by Condition		TBD	
Dimensions (W x H x D) ¹		86.36" x 49.43" x 3.15" (2193.4 x 1255.3 x 80 mm) (TBD)	75.95" x 43.31" x 2.74" (1929 x 1100 x 70 mm) (TBD)
Carton Size (W x H x D)		TBD	
Bezel Width		TBD	
Weight		TBD	
Gross Weight		TBD	
Pitch for Wall-Hanging		VESA Compliant 23.6" x 15.8" (600 x 400 mm)	VESA Compliant 23.6" x 15.8" (600 x 400 mm)
Built-in Speaker		20 W [10 W + 10 W]	
Orientation ²		Landscape/Portrait	
Tilting Angle ³		0-20 degrees forward with landscape/portrait setting	
Operating Environment		TBD	
Storage Environment		TBD	
Operating Time ⁴	24 h/day		
OPTIONS	12G-SDI Terminal Board	TY-SB01QS	TY-SB01QS
	Wireless Presentation System Receiver Board	TY-SB01WHP	TY-SB01WHP
	Early Warning Software ⁵	ET-SWA100/105 Series	ET-SWA100/105 Series

1: Excluding remote control receiver.
2: When installing the display vertically, be sure that the power indicator comes to the right side.
3: Please contact your sales representative with regard to the tilt angle before installation.
4: In case of long time, the moving image is recommended to be displayed. If you display a still picture for an extended period, the image retention might remain on the screen. However, image retention can gradually disappear by displaying a moving images.
5: Multi Monitoring & Control Software Ver.2.1 or later is required. Suffix of the part number may differ depending on the license type.

SQ2H Series

Preliminary Available from CY2023 Q4

Standard



Model no.	TH-75SQ2HW	TH-65SQ2HW	TH-55SQ2HW	TH-50SQ2HW	TH-43SQ2HW
DISPLAY PANEL					
Screen Size (Diagonal)/Aspect Ratio	75-inch class (74.51"/1892.7 mm)/16:9	65-inch class (64.52"/1638.9 mm)/16:9	55-inch class (54.63"/1387.8 mm)/16:9	50-inch class (49.50"/1257.3 mm)/16:9	43-inch class (42.51"/1079.8 mm)/16:9
Effective Display Area (W x H)	TBD	TBD	TBD	TBD	TBD
Resolution (H x V)	3840 x 2160	3840 x 2160	3840 x 2160	3840 x 2160	3840 x 2160
Brightness (Typ)	700 cd/m ²	700 cd/m ²	700 cd/m ²	700 cd/m ²	700 cd/m ²
Contrast Ratio	TBD	TBD	TBD	TBD	TBD
Dynamic Contrast Ratio	TBD	TBD	TBD	TBD	TBD
Response Time	TBD	TBD	TBD	TBD	TBD
Viewing Angle (Horizontal/Vertical)	178° / 178° (CR>10)	178° / 178° (CR>10)	178° / 178° (CR>10)	178° / 178° (CR>10)	178° / 178° (CR>10)
Panel Surface Treatment	Anti-glare treatment (Haze 25 %)	Anti-glare treatment (Haze 25 %)	Anti-glare treatment (Haze 25 %)	Anti-glare treatment (Haze 25 %)	Anti-glare treatment (Haze 25 %)
TERMINAL					
HDMI™ In	HDMI TYPE A Connector x 3 (HDCP2.2 supported)		HDMI TYPE A Connector x 3 (HDCP2.2 supported)		
USB	USB Connector (TYPE-A) x 2, (Type-C) x 1, Internal (Type-A) x 1		USB Connector (TYPE-A) x 2, (Type-C) x 1, Internal (Type-A) x 1		
PC In	Mini D-sub 15-pin x 1		Mini D-sub 15-pin x 1		
Audio In (L/R)	Stereo Mini Jack (M3) x 1		Stereo Mini Jack (M3) x 1		
Audio Out	Stereo Mini Jack (M3) x 1		Stereo Mini Jack (M3) x 1		
Serial In	D-sub 9-pin x 1, RS-232C Compatible		D-sub 9-pin x 1, RS-232C Compatible		
LAN	RJ45 x 1 compatible with PLink™ 10BASE-T/100BASE-TX		RJ45 x 1 compatible with PLink™ 10BASE-T/100BASE-TX		
IR In	Stereo Mini Jack (M3) x 1		Stereo Mini Jack (M3) x 1		
SLOT	Intel® SDM standard (3.3 V / max. 1.1 A, 12 V / max. 5.5 A)		Intel® SDM standard (3.3 V / max. 1.1 A, 12 V / max. 5.5 A)		
GENERAL					
Power Requirements	110-127 V AC, 50 Hz/60 Hz	110-127 V AC, 50 Hz/60 Hz	AC 110-127 V 50 Hz/60 Hz	AC 110-127 V 50 Hz/60 Hz	AC 110-127 V 50 Hz/60 Hz
Power Consumption	TBD	TBD	TBD	TBD	TBD
Power Off Condition	TBD	TBD	TBD	TBD	TBD
Stand-by Condition	TBD	TBD	TBD	TBD	TBD
Dimensions (W x H x D) ¹	66.28" x 37.87" x 2.74" (1684 x 962 x 70 mm) (TBD)	57.58" x 32.97" x 2.72" (1463 x 838 x 69 mm) (TBD)	48.89" x 28.06" x 2.60" (1242 x 713 x 66 mm) (TBD)	44.43" x 25.56" x 2.60" (1129 x 649 x 66 mm) (TBD)	38.31" x 22.10" x 2.56" (973 x 562 x 65 mm) (TBD)
Carton Size (W x H x D)	TBD	TBD	TBD	TBD	TBD
Bezel Width	TBD	TBD	TBD	TBD	TBD
Weight	Approx. 82.2 lbs. (37.3 kg) (TBD)	Approx. 65.5 lbs. (29.7 kg) (TBD)	Approx. 40.5 lbs. (18.4 kg) (TBD)	Approx. 34.8 lbs. (15.8 kg) (TBD)	Approx. 26.2 lbs. (11.9 kg) (TBD)
Gross Weight	TBD	TBD	TBD	TBD	TBD
Pitch for Wall-Hanging	VESA Compliant 23.6" x 15.8" (600 x 400 mm)	VESA Compliant 15.8" x 15.8" (400 x 400 mm)	TBD	TBD	VESA Compliant 7.9" x 7.9" (200 x 200 mm)
Built-in Speaker	20 W [10 W + 10 W]	20 W [10 W + 10 W]	20 W [10 W + 10 W]	20 W [10 W + 10 W]	20 W [10 W + 10 W]
Orientation ²	Landscape/Portrait		Landscape/Portrait		
Tilting Angle ³	0-20 degrees forward with landscape/portrait setting		0-20 degrees forward with landscape/portrait setting		
Operating Environment	TBD		TBD		
Storage Environment	TBD		TBD		
Operating Time ⁴	24 h/day		24 h/day		
OPTIONS					
12G-SDI Terminal Board	TY-SB01QS	TY-SB01QS	TY-SB01QS	TY-SB01QS	TY-SB01QS
Wireless Presentation System Receiver Board	TY-SB01WHP	TY-SB01WHP	TY-SB01WHP	TY-SB01WHP	TY-SB01WHP
Early Warning Software ⁵	ET-SWA100/105 Series	ET-SWA100/105 Series	ET-SWA100/105 Series	ET-SWA100/105 Series	ET-SWA100/105 Series

1: Excluding remote control receiver.

2: When installing the display vertically, be sure that the power indicator comes to the right side.

3: Please contact your sales representative with regard to the tilt angle before installation.

4: In case of long time, the moving image is recommended to be displayed. If you display a still picture for an extended period, the image retention might remain on the screen. However, image retention can gradually disappear by displaying a moving images.

5: Multi Monitoring & Control Software Ver.2.1 or later is required. Suffix of the part number may differ depending on the license type.

SQE2 Series

Standard



Model no.	TH-98SQE2W	TH-86SQE2W	TH-75SQE2W	TH-65SQE2W
DISPLAY PANEL				
Screen Size (Diagonal)/Aspect Ratio	98-inch class (97.51"/2476.9 mm)/16:9	86-inch class (85.60"/2174.2 mm)/16:9	75-inch class (74.51"/1892.7 mm)/16:9	65-inch class (64.52"/1638.9 mm)/16:9
Effective Display Area (W x H)	84.99" x 47.80" (2158.8 x 1214.3 mm)	74.60" x 41.96" (1895.0 x 1065.9 mm)	64.94" x 36.53" (1649.6 x 927.9 mm)	56.23" x 31.63" (1428.4 x 803.5 mm)
Resolution (H x V)	3840 x 2160	3840 x 2160	3840 x 2160	3840 x 2160
Brightness (Typ)	500 cd/m ²	500 cd/m ²	500 cd/m ²	500 cd/m ²
Contrast Ratio	1200:1	1100:1	1200:1	1200:1
Dynamic Contrast Ratio	50000:1	50000:1	50000:1	50000:1
Response Time (Typ.)	8.0 msec (G to G)	8.0 msec (G to G)	8.0 ms (typ.)	8.0 ms (typ.)
Viewing Angle (Horizontal/Vertical)	178° / 178° (CR>10)	178° / 178° (CR>10)	178° / 178° (CR>10)	178° / 178° (CR>10)
Panel Surface Treatment	Anti-Glare (Haze 25 %)	Anti-Glare (Haze 28 %)	Anti-Glare (Haze 25 %)	Anti-Glare (Haze 25 %)
TERMINAL				
HDMI™ In/HDMI™ Out	HDMI™ TYPE A Connector x 4 (HDCP2.2 supported)/HDMI™x1 (HDCP2.2 supported)		HDMI™ TYPE A Connector x 4 (HDCP2.2 supported)/HDMI™x1 (HDCP2.2 supported)	
DisplayPort In	DisplayPort x 1 (HDCP2.2 supported)		DisplayPort x 1 (HDCP2.2 supported)	
USB	Type A: DC 5 V/max. 0.9 A, USB 3.0 is supported, Type A: DC 5 V/max. 0.5 A, USB 2.0 is supported, Type A: DC 5 V/max. 0.5 A, USB 2.0 is supported (Internal), Type C: DC 5 V/max. 3.0 A, USB 3.0 is supported, DisplayPort Alternate mode compatible		Type A: DC 5 V/max. 0.9 A, USB 3.0 is supported, Type A: DC 5 V/max. 0.5 A, USB 2.0 is supported, Type A: DC 5 V/max. 0.5 A, USB 2.0 is supported (Internal), Type C: DC 5 V/max. 3.0 A, USB 3.0 is supported, DisplayPort Alternate mode compatible	
microSD	microSD/SDHC/SDXC / MAX 1 TB		microSD/SDHC/SDXC / MAX 1 TB	
Audio Out	Stereo Mini Jack (ø3.5 mm) x 1, SPDIF x 1		Stereo Mini Jack (ø3.5 mm) x 1, SPDIF x 1	
Serial In	Stereo Mini Jack (ø3.5 mm) x 1, RS-232C Compatible		Stereo Mini Jack (ø3.5 mm) x 1, RS-232C Compatible	
LAN	RJ45 x 1, 10BASE-T/100BASE-TX/1000BASE-T		RJ45 x 1, 10BASE-T/100BASE-TX/1000BASE-T	
IR In	Stereo Mini Jack (ø3.5 mm) x 1		Stereo Mini Jack (ø3.5 mm) x 1	
SLOT	Intel® SDM standard (66 W)		Intel® SDM standard (66 W)	
Wi-Fi	Yes (USB Dongle)		Yes (Built-in) IEEE 802.11 a/b/g/n Dual, Wi-Fi certified	
Bluetooth®	Yes (USB Dongle) Bluetooth5.1 with BLE		Yes (USB Dongle) Ver4.2, HID, A2DP	
GENERAL				
HTML5 Browser	HTML5 (Vwed)		HTML5 (Vwed)	
Android-OS	Yes		Yes	
Power Supply	AC 110-240 V 50 Hz/60 Hz, 7.7 A-3.8 A	AC 110-240 V 50 Hz/60 Hz, 4.2 A-2.1 A	AC 110-240 V 50 Hz/60 Hz, 3.9 A-1.9 A	AC 110-240 V 50 Hz/60 Hz, 3.5 A-1.8 A
Power Consumption	450 W (Shipping Condition)	210 W (Shipping Condition)	185 W (Shipping Condition)	170 W (Shipping Condition)
On Mode Average Power Consumption ¹	410 W (Picture Mode: [Natural])	205 W (Picture Mode: [Natural])	185 W (Picture Mode: [Natural])	165 W (Picture Mode: [Natural])
Power Off Condition	Approx. 0 W	Approx. 0 W	Approx. 0 W	Approx. 0 W
Stand-by Condition	Approx. 0.5 W	Approx. 0.5 W	Approx. 0.5 W	Approx. 0.5 W
Dimensions (W x H x D) ²	87.25" x 50.02" x 3.87" (2216 x 1271 x 99 mm)	75.91" x 43.28" x 3.16" (1929 x 1100 x 81 mm)	66.28" x 38.09" x 3.92" (1684 x 968 x 100 mm)	57.32" x 32.84" x 3.78" (1456 x 835 x 96 mm)
Carton Size (W x H x D)	95.87" x 66.30" x 15.24" (2435 x 1684 x 387 mm)	85.16" x 55.32" x 14.96" (2163 x 1405 x 380 mm)	76.70" x 46.07" x 8.27" (1948 x 1170 x 210 mm)	63.27" x 38.58" x 6.97" (1607 x 980 x 177 mm)
Bezel Width	1.11" (28.2 mm) (T/R/L/R)	0.6" (15.3 mm) (T/R/L/R)	0.62" (15.7 mm) (T/R/L), 0.85" (21.5 mm) (B)	0.51" (12.9 mm) (T/R/L), 0.63" (16.1 mm) (B)
Weight	Approx. 220.1 lbs. (99.8 kg)	Approx. 138.7 lbs. (62.9 kg)	Approx. 82.5 lbs. (37.4 kg)	Approx. 54.9 lbs. (24.9 kg)
Gross Weight	Approx. 328.5 lbs. (149 kg)	Approx. 185.2 lbs. (84 kg)	Approx. 112.5 lbs. (51 kg)	Approx. 77.2 lbs. (35 kg)
Pitch for Wall-Hanging	VESA Compliant 31.5" x 15.8" (800 x 400 mm), Installed by: M8 screws	VESA Compliant 23.6" x 15.8" (600 x 400 mm), Installed by: M8 screws	VESA Compliant 23.6" x 15.8" (600 x 400 mm), Installed by: M8 screws	VESA Compliant 23.6" x 15.8" (600 x 400 mm), Installed by: M6 screws
Built-in Speaker	24 W		24 W	
Orientation	Landscape/Portrait ³		Landscape/Portrait ³	
Tilting Angle ⁴	20 degrees forward and backward with landscape/portrait setting		45 degrees forward and backward with landscape/portrait setting	
Operating Environment	Temperature: 32 °F to 104 °F (0 °C to 40 °C) for up to 4593 ft (1400 m) altitude/ 32 °F to 95 °F (0 °C to 35 °C) for between 4593 ft to 9186 ft (1400 m to 2800 m) altitude Humidity: 20 % to 80 % (No Condensation), Altitude: lower than 9186 ft (2800 m)		Temperature: 32 °F to 104 °F (0 °C to 40 °C) for up to 4593 ft (1400 m) altitude/ 32 °F to 95 °F (0 °C to 35 °C) for between 4593 ft to 9186 ft (1400 m to 2800 m) altitude Humidity: 20 % to 80 % (No Condensation), Altitude: lower than 9186 ft (2800 m)	
Storage Environment	Temperature: -4 °F to 140 °F (-20 °C to 60 °C), Humidity: 20 % to 80 % (No Condensation)		Temperature: -4 °F to 140 °F (-20 °C to 60 °C), Humidity: 20 % to 80 % (No Condensation)	
Operating Time ⁵	24 h/day		24 h/day	
OPTIONS				
12G-SDI Terminal Board ⁶	TY-SB01QS	TY-SB01QS	TY-SB01QS	TY-SB01QS
Wireless Presentation System Receiver Board	TY-SB01WP	TY-SB01WP	TY-SB01WP	TY-SB01WP
DIGITAL LINK Board ⁷	TY-SB01DL	TY-SB01DL	TY-SB01DL	TY-SB01DL
Early Warning Software ⁸	ET-SWA100/105 Series	ET-SWA100/105 Series	ET-SWA100/105 Series	ET-SWA100/105 Series

1: Based on IEC 62087 Ed.2 measurement method. 2: Not including remote controller sensor box.

3: When installing the Display vertically, be sure to rotate clockwise and install.

4: Please contact your sales representative with regard to the tilt angle before installation.

5: Displaying a still image for a long time may cause burn-in (image persistence artifacts), it could be mitigated when display video image.

6: Some functions are not supported. 7: LAN control is not supported.

8: Multi Monitoring & Control Software Ver. 2.1 or later is required. Suffix of the part number may differ depending on the license type.



Model no.	TH-55SQE2W	TH-50SQE2W	TH-43SQE2W
DISPLAY PANEL			
Screen Size (Diagonal)/Aspect Ratio	55-inch class (54.63"/1387.8 mm)/16:9	50-inch class (49.50"/1257.3 mm)/16:9	43-inch class (42.51"/1079.8 mm)/16:9
Effective Display Area (W x H)	47.62" x 26.78" (1209.6 x 680.4 mm)	43.14" x 24.26" (1095.8 x 616.4 mm)	37.05" x 20.84" (941.1 x 529.4 mm)
Resolution (H x V)	3840 x 2160	3840 x 2160	3840 x 2160
Brightness (Typ)	500 cd/m ²	500 cd/m ²	500 cd/m ²
Contrast Ratio	1200:1	5000:1	1200:1
Dynamic Contrast Ratio	50000:1	50000:1	50000:1
Response Time	8.0 ms (typ.)	9.5 ms (typ.)	8.0 ms (typ.)
Viewing Angle (Horizontal/Vertical)	178° / 178° (CR>10)	178° / 178° (CR>10)	178° / 178° (CR>10)
Panel Surface Treatment	Anti-Glare (Haze 25 %)	Anti-Glare (Haze 25 %)	Anti-Glare (Haze 25 %)
TERMINAL			
HDMI™ In/HDMI™ Out	HDMI™ TYPE A Connector x 4 (HDCP2.2 supported)/HDMI™x1 (HDCP2.2 supported)		HDMI™ TYPE A Connector x 4 (HDCP2.2 supported)/HDMI™x1 (HDCP2.2 supported)
DisplayPort In	DisplayPort x 1 (HDCP2.2 supported)		DisplayPort x 1 (HDCP2.2 supported)
USB	Type A: DC 5 V/max. 0.9 A, USB 3.0 is supported, Type A: DC 5 V/max. 0.5 A, USB 2.0 is supported, Type A: DC 5 V/max. 0.5 A, USB 2.0 is supported (Internal), Type C: DC 5 V/max. 3.0 A, USB 3.0 is supported, DisplayPort Alternate mode compatible		Type A: DC 5 V/max. 0.9 A, USB 3.0 is supported, Type A: DC 5 V/max. 0.5 A, USB 2.0 is supported, Type A: DC 5 V/max. 0.5 A, USB 2.0 is supported (Internal), Type C: DC 5 V/max. 3.0 A, USB 3.0 is supported, DisplayPort Alternate mode compatible
microSD	microSD/SDHC/SDXC / MAX 1 TB		microSD/SDHC/SDXC / MAX 1 TB
Audio Out	Stereo Mini Jack (ø3.5 mm) x 1, SPDIF x 1		Stereo Mini Jack (ø3.5 mm) x 1, SPDIF x 1
Serial In	Stereo Mini Jack (ø3.5 mm) x 1, RS-232C Compatible		Stereo Mini Jack (ø3.5 mm) x 1, RS-232C Compatible
LAN	RJ45 x 1, 10BASE-T/100BASE-TX/1000BASE-T		RJ45 x 1, 10BASE-T/100BASE-TX/1000BASE-T
IR In	Stereo Mini Jack (ø3.5 mm) x 1		Stereo Mini Jack (ø3.5 mm) x 1
SLOT	Intel® SDM standard (66 W)		Intel® SDM standard (50 W)
Wi-Fi	Yes (Built-in) IEEE 802.11 a/b/g/n Dual, Wi-Fi certified		Yes (Built-in) IEEE 802.11 a/b/g/n Dual, Wi-Fi certified
Bluetooth®	Yes (USB Dongle) Ver4.2, HID, A2DP		Yes (USB Dongle) Ver4.2, HID, A2DP
GENERAL			
HTML Browser	HTML5 (Vvwd)		HTML5 (Vvwd)
Android-OS	Yes		Yes
Power Supply	AC 110-240 V 50 Hz/60 Hz, 2.9 A-1.4 A	AC 110-240 V 50 Hz/60 Hz, 2.7 A-1.3 A	AC 110-240 V 50 Hz/60 Hz, 2.4 A-1.2 A
Power Consumption	115 W (Shipping Condition)	105 W (Shipping Condition)	110 W (Shipping Condition)
On Mode Average Power Consumption ¹	115 W (Picture Mode: [Natural])	100 W (Picture Mode: [Natural])	105 W (Picture Mode: [Natural])
Power Off Condition	Approx. 0 W	Approx. 0 W	Approx. 0 W
Stand-by Condition	Approx. 0.5 W	Approx. 0.5 W	Approx. 0.5 W
Dimensions (W x H x D) ²	48.64" x 27.92" x 3.28" (1236 x 710 x 84 mm)	44.12" x 25.43" x 3.27" (1121 x 646 x 83 mm)	37.92" x 21.85" x 3.26" (964 x 555 x 83 mm)
Carton Size (W x H x D)	53.90" x 34.41" x 6.50" (1369 x 874 x 165 mm)	47.83" x 30.51" x 6.50" (1215 x 775 x 165 mm)	41.34" x 28.27" x 7.01" (1050 x 718 x 178 mm)
Bezel Width	0.43" (11 mm) (T/R/L), 0.54" (13.8 mm) (B)	0.39" (10 mm) (T/R/L), 0.61" (15.5 mm) (B)	0.33" (8.4 mm) (T/R/L), 0.47" (12 mm) (B)
Weight	Approx. 40.2 lbs. (18.2 kg)	Approx. 30.2 lbs. (13.2 kg)	Approx. 23.4 lbs. (10.6 kg)
Gross Weight	Approx. 52.9 lbs. (24 kg)	Approx. 39.7 lbs. (18 kg)	Approx. 33.1 lbs. (15 kg)
Pitch for Wall-Hanging	VESA Compliant 15.8" x 15.8" (400 x 400 mm), Installed by: M6 screws	VESA Compliant 7.9" x 7.9" (200 x 200 mm), Installed by: M6 screws	VESA Compliant 7.9" x 7.9" (200 x 200 mm), Installed by: M6 screws
Built-in Speaker	20 W		16 W
Orientation	Landscape/Portrait ³		Landscape/Portrait ³
Tilting Angle ⁴	45 degrees forward and backward with landscape/portrait setting		45 degrees forward and backward with landscape/portrait setting
Operating Environment	Temperature: 32 °F to 104 °F (0 °C to 40 °C) for up to 4593 ft (1400 m) altitude/ 32 °F to 95°F (0 °C to 35 °C) for between 4593 ft to 9186 ft (1400 m to 2800 m) altitude Humidity: 20 % to 80 % (No Condensation), Altitude: lower than 9186 ft (2800 m)		Temperature: 32 °F to 104 °F (0 °C to 40 °C) for up to 4593 ft (1400 m) altitude/ 32 °F to 95°F (0 °C to 35 °C) for between 4593 ft to 9186 ft (1400 m to 2800 m) altitude Humidity: 20 % to 80 % (No Condensation), Altitude: lower than 9186 ft (2800 m)
Storage Environment	Temperature: -4 °F to 140 °F (-20 °C to 60 °C), Humidity: 20 % to 80 % (No Condensation)		Temperature: -4 °F to 140 °F (-20 °C to 60 °C), Humidity: 20 % to 80 % (No Condensation)
Operating Time ⁵	24 h/day		24 h/day
OPTIONS			
12G-SDI Terminal Board ⁶	TY-SB01QS	TY-SB01QS	TY-SB01QS
Wireless Presentation System Receiver Board	TY-SB01WP	TY-SB01WP	TY-SB01WP
DIGITAL LINK Board ⁷	TY-SB01DL	TY-SB01DL	TY-SB01DL
Early Warning Software ⁸	ET-SWA100/105 Series	ET-SWA100/105 Series	ET-SWA100/105 Series

1: Based on IEC 62087 Ed.2 measuring method. 2: Not including remote controller sensor box.

3: When installing the Display vertically, be sure to rotate clockwise and install.

4: Please contact your sales representative with regard to the tilt angle before installation.

5: Displaying a still image for a long time may cause burn-in (image persistence artifacts), it could be mitigated when display video image.

6: Some functions are not supported. 7: LAN control is not supported.

8: Multi Monitoring & Control Software Ver. 2.1 or later is required. Suffix of the part number may differ depending on the license type.

EQ2 Series



Model no.	TH-86EQ2W	TH-75EQ2W	TH-65EQ2W
DISPLAY PANEL			
Screen Size (Diagonal)/Aspect Ratio	86-inch class (85.6"/2174.2 mm) /16:9	75-inch class (74.5"/1892.7 mm) /16:9	65-inch class (64.5"/1638.9 mm) /16:9
Effective Display Area (W x H)	74.60" x 41.96" (1895.0 x 1065.9 mm)	64.94" x 36.53" (1649.6 x 927.9 mm)	56.23" x 31.63" (1428.4 x 803.5 mm)
Resolution (H x V)	3840 x 2160	3840 x 2160	3840 x 2160
Brightness (Typ)	500 cd/m ²	500 cd/m ²	500 cd/m ²
Contrast Ratio	1200:1	1200:1	1200:1
Dynamic Contrast Ratio	50000:1	50000:1	50000:1
Response Time	8.0 ms (G to G)	8.0 ms (G to G)	8.0 ms (G to G)
Viewing Angle (Horizontal/Vertical)	178°/178° (CR>0)	178°/178° (CR>0)	178°/178° (CR>0)
Panel Surface Treatment	Anti-Glare (Haze 25 %)	Anti-Glare (Haze 25 %)	Anti-Glare (Haze 25 %)
TERMINAL			
HDMI In	HDMI TYPE-A Connector x 3 (HDCP2.2 supported)		HDMI TYPE-A Connector x 3 (HDCP2.2 supported)
Audio In (L/R)	Stereo Mini Jack (φ3.5 mm) x 1 (Shared with AV/PC In)		Stereo Mini Jack (φ3.5 mm) x 1 (Shared with AV/PC In)
PC In	Mini D-sub 15-pin x 1 (Female)		Mini D-sub 15-pin x 1 (Female)
Audio In (L/R)	Stereo Mini Jack (M3) x 1		Stereo Mini Jack (M3) x 1
USB	Type A: DC 5 V/1 A, USB 3.0 is supported, Type A: DC 5 V/2 A, USB 2.0 is supported, Type C: max ~ 60W (Power Delivery compatible), USB2.0 is supported, DisplayPort Alternate mode compatible		Type A: DC 5 V/1 A, USB 3.0 is supported, Type A: DC 5 V/2 A, USB 2.0 is supported, Type C: max ~ 60W (Power Delivery compatible), USB2.0 is supported, DisplayPort Alternate mode compatible
Serial In	D-sub 9-pin x 1, RS-232C Compatible		D-sub 9-pin x 1, RS-232C Compatible
DIGITAL LINK	-		-
LAN	RJ45 x 1, RJ45 10BASE-T/100BASE-TX		RJ45 x 1, RJ45 10BASE-T/100BASE-TX
IR In/Out	Stereo Mini Jack (M3) x 1 / x 1		Stereo Mini Jack (M3) x 1 / x 1
Audio Out	Stereo Mini Jack (M3) x 1		Stereo Mini Jack (M3) x 1
SLOT	SDM-S / SDM-L, 3.3 V/max.1.1 A, 12 V/max 5.5 A		SDM-S / SDM-L, 3.3 V/max.1.1 A, 12 V/max 5.5 A
GENERAL			
Power Requirements	AC 110 - 240 V 50 Hz / 60 Hz	AC 110 - 240 V 50 Hz / 60 Hz	AC 110 - 240 V 50 Hz / 60 Hz
Power Consumption	580 W	385 W	340 W
Power Off Condition	Approx. 0.3 W	Approx. 0.3 W	Approx. 0.3 W
Stand-by Condition	Approx. 0.5 W	Approx. 0.5 W	Approx. 0.5 W
Dimensions (W x H x D ¹)	75.95" x 43.31" x 3.76" (1929 x 1100 x 96 mm) ¹	66.28" x 37.87" x 3.76" (1684 x 962 x 96 mm) ¹	57.58" x 32.97" x 3.68" (1463 x 838 x 94 mm) ¹
Carton Size (W x H x D)	83.86" x 52.01" x 9.77" (2130 x 1321 x 248 mm)	73.63" x 45.00" x 11.03" (1870 x 1143 x 280 mm)	63.63" x 39.30" x 7.37" (1616 x 998 x 187 mm)
Bezel Width	0.61" (15.5 mm) (T/R/L/B)	0.59" (14.9 mm) (T/R/L/B)	0.59" (14.9 mm) (T/R/L/B)
Weight	Approx. 111.8 lbs. (50.7 kg)	Approx. 82.2 lbs. (37.3 kg)	Approx. 65.5 lbs. (29.7 kg)
Gross Weight	Approx. 156.5 lbs. (71.0 kg)	Approx. 112.4 lbs. (51.0 kg)	Approx. 88.2 lbs. (40.0 kg)
Pitch for Wall-Hanging	23.6" x 15.8" (600 x 400 mm) VESA Compliant, M8 (Screw hole depth: 0.8" (20 mm))	23.6" x 15.8" (600 x 400 mm) VESA Compliant, M8 (Screw hole depth: 0.7" (18 mm))	VESA Compliant 15.8" x 15.8" (400 x 400 mm), M6 (Screw hole depth: 0.8" (20 mm))
Built-in Speaker	20 W [10 W + 10 W]		20 W [10 W + 10 W]
Orientation	Landscape/Portrait		Landscape/Portrait
Tilting Angle ²	0-20 degrees forward/backward with landscape/portrait setting		0-20 degrees forward/backward with landscape/portrait setting
Operating Environment	Temperature: 32 °F to 104 °F (0 °C to 40 °C) / for up to 4593 ft (1400 m) altitude, 32 °F to 95 °F (0 °C to 35 °C) / Altitude 4593 ft to 9186 ft [1400-2800 m] / Humidity: 20 % - 80 % (No condensation)		Temperature: 32 °F to 104 °F (0 °C to 40 °C) / for up to 4593 ft (1400 m) altitude, 32 °F to 95 °F (0 °C to 35 °C) / Altitude 4593 ft to 9186 ft [1400-2800 m] / Humidity: 20 % to 80 % (No condensation)
Storage Environment	Temperature: -4 °F to 140 °F (-20 °C to 60 °C) / Humidity: 20 % to 80 % (Non condensation)		Temperature: -4°F to 140 °F (-20 °C to 60 °C) / Humidity: 20 % to 80 % (Non condensation)
Operating Time ³	18 h/day		18 h/day
OPTIONS			
Pedestal	-	TY-ST75PE9	TY-ST75PE9
Wall-hanging Bracket	-	-	-
Early Warning Software ⁴	ET-SWA100/105 Series	ET-SWA100/105 Series	ET-SWA100/105 Series

1: Including handles.

2: Please contact your sales representative with regard to the tilt angle before installation.

3: In case of long time, the moving image is recommended to be displayed. If you display a still picture for an extended period, the image retention might remain on the screen. However, image retention can gradually disappear by displaying a moving images.

4: Multi Monitoring & Control Software Ver.2.0 or later is required. Suffix of the part number may differ depending on the licence type.



Model no.	TH-55EQ2W	TH-50EQ2W	TH-43EQ2W
DISPLAY PANEL			
Screen Size (Diagonal)/Aspect Ratio	55-inch class (54.6"/1387.8 mm) /16:9	50-inch class (49.5"/1257.3 mm) /16:9	43-inch class (42.5"/1079.8 mm) /16:9
Effective Display Area (W x H)	47.62" x 26.78" (1209.6 x 680.4 mm)	43.14" x 24.26" (1095.8 x 616.4 mm)	37.05" x 20.84" (941.1 x 529.4 mm)
Resolution (H x V)	3840 x 2160	3840 x 2160	3840 x 2160
Brightness (Typ)	500 cd/m ²	500 cd/m ²	500 cd/m ²
Contrast Ratio	1200:1	5000:1	1200:1
Dynamic Contrast Ratio	50000:1	50000:1	50000:1
Response Time	8.0 ms (G to G)	9.5 ms (G to G)	8.0 ms (G to G)
Viewing Angle (Horizontal/Vertical)	178°/178° (CR>0)	178°/178° (CR>0)	178°/178° (CR>0)
Panel Surface Treatment	Anti-Glare (Haze 25 %)	Anti-Glare (Haze 25 %)	Anti-Glare (Haze 25 %)
TERMINAL			
HDMI In	HDMI TYPE-A Connector x 3 (HDCP2.2 supported)		HDMI TYPE-A Connector x 3 (HDCP2.2 supported)
Composite In	-		-
DVI-D In	-		-
Audio In (L/R)	Stereo Mini Jack (ø3.5 mm) x 1 (Shared with AV/PC In)		Stereo Mini Jack (ø3.5 mm) x 1 (Shared with AV/PC In)
PC In	Mini D-sub 15-pin x 1 (Female)		Mini D-sub 15-pin x 1 (Female)
Audio In (L/R)	Stereo Mini Jack (M3) x 1		Stereo Mini Jack (M3) x 1
USB	Type A: DC 5 V/1 A, USB 3.0 is supported, Type A: DC 5 V/2 A, USB 2.0 is supported, Type C: max ~ 60W (Power Delivery compatible), USB2.0 is supported, DisplayPort Alternate mode compatible		Type A: DC 5 V/1 A, USB 3.0 is supported, Type A: DC 5 V/2 A, USB 2.0 is supported, Type C: max ~ 60W (Power Delivery compatible), USB2.0 is supported, DisplayPort Alternate mode compatible
Serial In	D-sub 9-pin x 1, RS-232C Compatible		D-sub 9-pin x 1, RS-232C Compatible
DIGITAL LINK	-		-
LAN	RJ45 x 1, RJ45 10BASE-T/100BASE-TX		RJ45 x 1, RJ45 10BASE-T/100BASE-TX
IR In/Out	Stereo Mini Jack (M3) x 1 / x 1		Stereo Mini Jack (M3) x 1 / x 1
Audio Out	Stereo Mini Jack (M3) x 1		Stereo Mini Jack (M3) x 1
SLOT	SDM-S / SDM-L, 3.3 V/max.1.1 A, 12 V/max 5.5 A		SDM-S / SDM-L, 3.3 V/max.1.1 A, 12 V/max 5.5 A
GENERAL			
Power Requirements	AC 110 - 240 V 50 Hz / 60 Hz		AC 110 - 240 V 50 Hz / 60 Hz
Power Consumption	280 W		255 W
Power Off Condition	Approx. 0.3 W		Approx. 0.3 W
Stand-by Condition	Approx. 0.5 W		Approx. 0.5 W
Dimensions (W x H x D)	48.89" x 28.06" x 2.60" (1242 x 713 x 66 mm)	44.43" x 25.56" x 2.60" (1129 x 649 x 66 mm)	38.31" x 22.10" x 2.56" (973 x 562 x 65 mm)
Carton Size (W x H x D)	53.15" x 33.86" x 6.30" (1350 x 860 x 160 mm)	48.43" x 31.50" x 5.60" (1230 x 800 x 142 mm)	42.13" x 26.50" x 5.56" (1070 x 673 x 141 mm)
Bezel Width	0.55" (13.9 mm) (T/R/L/B)		0.55" (13.9 mm) (T/R/L/B)
Weight	Approx. 39.7 lbs. (18.0 kg)		Approx. 25.8 lbs. (11.7 kg)
Gross Weight	Approx. 55.1 lbs. (25.0 kg)		Approx. 35.3 lbs. (16.0 kg)
Pitch for Wall-Hanging	VESA Compliant 15.8" x 15.8" (400 x 400 mm), M6 (Screw hole depth: 0.7" (18 mm))		VESA Compliant 7.9" x 7.9" (200 x 200 mm), M6 (Screw hole depth 0.6" (16 mm))
Built-in Speaker	20 W [10 W + 10 W]		20 W [10 W + 10 W]
Orientation	Landscape/Portrait		Landscape/Portrait
Tilting Angle ¹	0-20 degrees forward/backward with landscape/portrait setting		0-20 degrees forward/backward with landscape/portrait setting
Operating Environment	Temperature: 32 °F to 104 °F (0 °C to 40 °C) / for up to 4593 ft (1400 m) altitude, 32 °F to 95 °F (0 °C to 35 °C) / Altitude 4593 ft to 9186 ft [1400-2800 m] / Humidity: 20 % - 80 % (No condensation)		Temperature: 32 °F to 104 °F (0 °C to 40 °C) / for up to 4593 ft (1400 m) altitude, 32 °F to 95 °F (0 °C to 35 °C) / Altitude 4593 ft to 9186 ft [1400-2800 m] / Humidity: 20 % to 80 % (No condensation)
Storage Environment	Temperature: -4 °F to 140 °F (-20 °C to 60 °C) / Humidity: 20 % to 80 % (Non condensation)		Temperature: -4 °F to 140 °F (-20 °C to 60 °C) / Humidity: 20 % to 80 % (Non condensation)
Operating Time ²	18 h/day		18 h/day
OPTIONS			
Pedestal	TY-ST55PE9		TY-ST43PE9
Wall-hanging Bracket	-		-
Early Warning Software ³	ET-SWA100/105 Series		ET-SWA100/105 Series

1: Please contact your sales representative with regard to the tilt angle before installation.

2: In case of long time, the moving image is recommended to be displayed. If you display a still picture for an extended period, the image retention might remain on the screen. However, image retention can gradually disappear by displaying a moving images.

3: Multi Monitoring & Control Software Ver.2.0 or later is required. Suffix of the part number may differ depending on the licence type.

CQE2 Series



Model no.	TH-98CQE2W	TH-86CQE2W	TH-75CQE2W	TH-65CQE2W
DISPLAY PANEL				
Screen Size (Diagonal)/Aspect Ratio	98-inch (97.51"/2476.9 mm)/16:9	86-inch (85.60"/2174.2 mm)/16:9	75-inch (74.51"/1892.7 mm)/16:9	65-inch (64.52"/1638.9 mm)/16:9
Effective Display Area (W x H)	84.99" x 47.80" (2158.8 x 1214.3 mm)	74.60" x 41.96" (1895.0 x 1065.9 mm)	64.94" x 36.53" (1649.6 x 927.9 mm)	56.23" x 31.63" (1428.4 x 803.5 mm)
Resolution (H x V)	3840 x 2160	3840 x 2160	3840 x 2160	3840 x 2160
Brightness (Typ)	500 cd/m ²	400 cd/m ²	400 cd/m ²	500 cd/m ²
Contrast Ratio	1200:1	1200:1	1200:1	1200:1
Dynamic Contrast Ratio	50000:1	50000:1	50000:1	50000:1
Response Time (Typ.)	8.0 msec (G to G)	8.0 msec (G to G)	8.0 ms (typ.)	8.0 ms (typ.)
Viewing Angle (Horizontal/Vertical)	178° / 178° (CR>10)	178° / 178° (CR>10)	178° / 178° (CR>10)	178° / 178° (CR>10)
Panel Surface Treatment	Anti-Glare (Haze 25 %)	Anti-Glare (Haze 28 %)	Anti-Glare (Haze 25 %)	Anti-Glare (Haze 25 %)
TERMINAL				
HDMI™ In/HDMI™ Out	HDMI™ TYPE A Connector x 4 (HDCP2.2 supported)/HDMI™x1 (HDCP2.2 supported)		HDMI™ TYPE A Connector x 4 (HDCP2.2 supported)/HDMI™x1 (HDCP2.2 supported)	
USB	Type A: DC 5 V/max. 0.9 A, USB 3.0 is supported, Type A: DC 5 V/max. 0.5 A, USB 2.0 is supported, Type A: DC 5 V/max. 0.5 A, USB 2.0 is supported (Internal), Type C: DC 5 V/max. 3.0 A, USB 3.0 is supported, DisplayPort Alternate mode compatible		Type A: DC 5 V/max. 0.9 A, USB 3.0 is supported, Type A: DC 5 V/max. 0.5 A, USB 2.0 is supported, Type A: DC 5 V/max. 0.5 A, USB 2.0 is supported (Internal), Type C: DC 5 V/max. 3.0 A, USB 3.0 is supported, DisplayPort Alternate mode compatible	
microSD	microSD/SDHC/SDXC / MAX 1 TB		microSD/SDHC/SDXC / MAX 1 TB	
Audio Out	Stereo Mini Jack (ø3.5 mm) x 1, SPDIF x 1		Stereo Mini Jack (ø3.5 mm) x 1, SPDIF x 1	
Serial In	Stereo Mini Jack (ø3.5 mm) x 1, RS-232C Compatible		Stereo Mini Jack (ø3.5 mm) x 1, RS-232C Compatible	
LAN	RJ45 x 1, 10BASE-T/100BASE-TX/1000BASE-T		RJ45 x 1, 10BASE-T/100BASE-TX/1000BASE-T	
IR In	Stereo Mini Jack (ø3.5 mm) x 1		Stereo Mini Jack (ø3.5 mm) x 1	
Wi-Fi	Yes (USB Dongle)		Yes (Built-in) IEEE 802.11 a/b/g/n Dual, Wi-Fi certified	
Bluetooth®	Yes (USB Dongle) Bluetooth5.1 with BLE		Yes (USB Dongle) Ver4.2, HID, A2DP	
GENERAL				
HTML Browser	HTML5 (Vwed)		HTML5 (Vwed)	
Android-OS	Yes		Yes	
Power Supply	AC 110-127 V 50 Hz/60 Hz, 6.7 A	AC 110-127 V 50 Hz/60 Hz, 3.8 A	AC 110-127 V 50 Hz/60 Hz, 2.7 A	AC 110-127 V 50 Hz/60 Hz, 2.6 A
Power Consumption	TBD (Shipping Condition)		TBD (Shipping Condition)	
On Mode Average Power Consumption ¹	TBD (Picture Mode: [Natural])		TBD (Picture Mode: [Natural])	
Power Off Condition	Approx. 0 W		Approx. 0 W	
Stand-by Condition	Approx. 0.5 W		Approx. 0.5 W	
Dimensions (W x H x D) ²	87.25" x 50.02" x 3.87" (2216 x 1271 x 99 mm)	75.91" x 43.28" x 3.16" (1929 x 1100 x 81 mm)	66.28" x 38.09" x 3.92" (1684 x 968 x 100 mm)	57.32" x 32.84" x 3.78" (1456 x 835 x 96 mm)
Carton Size (W x H x D)	95.87" x 66.30" x 15.24" (2435 x 1684 x 387 mm)	85.16" x 55.32" x 14.96" (2163 x 1405 x 380 mm)	76.70" x 46.07" x 8.27" (1948 x 1170 x 210 mm)	63.27" x 38.58" x 6.97" (1607 x 980 x 177 mm)
Bezel Width	1.11" (28.2 mm) (T/R/L/R)	0.6" (15.3 mm) (T/R/L/R)	0.62" (15.7 mm) (T/R/L), 0.85" (21.5 mm) (B)	0.51" (12.9 mm) (T/R/L), 0.63" (16.1 mm) (B)
Weight	Approx. 219.2 lbs. (99.4 kg)	Approx. 136.1 lbs. (61.7 kg)	Approx. 81.2 lbs. (36.8 kg)	Approx. 54.3 lbs. (24.6 kg)
Gross Weight	Approx. 328.5 lbs. (149 kg)	Approx. 185.2 lbs. (84 kg)	Approx. 112.5 lbs. (51 kg)	Approx. 77.2 lbs. (35 kg)
Pitch for Wall-Hanging	VESA Compliant 31.5" x 15.8" (800 x 400 mm), Installed by: M8 screws	VESA Compliant 23.6" x 15.8" (600 x 400 mm), Installed by: M8 screws	VESA Compliant 23.6" x 15.8" (600 x 400 mm), Installed by: M8 screws	VESA Compliant 23.6" x 15.8" (600 x 400 mm), Installed by: M6 screws
Built-in Speaker	24 W		24 W	
Orientation	Landscape/Portrait ³		Landscape/Portrait ³	
Tilting Angle ⁴	20 degrees forward and backward with landscape/portrait setting		45 degrees forward and backward with landscape/portrait setting	
Operating Environment	Temperature: 32 °F to 104 °F (0 °C to 40 °C) for up to 4593 ft (1400 m) altitude/ 32 °F to 95 °F (0 °C to 35 °C) for between 4593 ft to 9186 ft (1400 m to 2800 m) altitude Humidity: 20 % to 80 % (No Condensation), Altitude: lower than 9186 ft (2800 m)		Temperature: 32 °F to 104 °F (0 °C to 40 °C) for up to 4593 ft (1400 m) altitude/ 32 °F to 95 °F (0 °C to 35 °C) for between 4593 ft to 9186 ft (1400 m to 2800 m) altitude Humidity: 20 % to 80 % (No Condensation), Altitude: lower than 9186 ft (2800 m)	
Storage Environment	Temperature: -4 °F to 140 °F (-20 °C to 60 °C), Humidity: 20 % to 80 % (No Condensation)		Temperature: -4 °F to 140 °F (-20 °C to 60 °C), Humidity: 20 % to 80 % (No Condensation)	
Operating Time ⁵	24 h/day		16 h/day	
OPTIONS				
Early Warning Software ⁶	ET-SWA100/105 Series	ET-SWA100/105 Series	ET-SWA100/105 Series	ET-SWA100/105 Series

1: Based on IEC 62087 Ed.2 measurement method.

2: Not including remote controller sensor box.

3: When installing the Display vertically, be sure to rotate clockwise and install.

4: Please contact your sales representative with regard to the tilt angle before installation.

5: Displaying a still image for a long time may cause burn-in (image persistence artifacts), it could be mitigated when display video image.

6: Multi Monitoring & Control Software Ver. 2.1 or later is required. Suffix of the part number may differ depending on the license type.

CQE2 Series



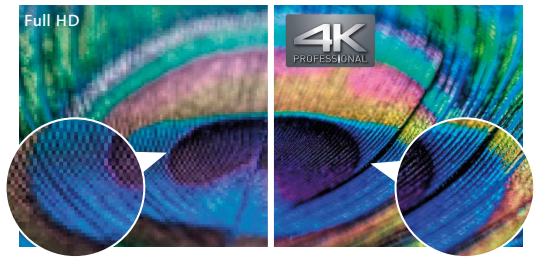
Model no.	TH-55CQE2W	TH-50CQE2W	TH-43CQE2W
DISPLAY PANEL			
Screen Size (Diagonal)/Aspect Ratio	55-inch (54.63"/1387.8 mm)/16:9	50-inch (49.50"/1257.3 mm)/16:9	43-inch (42.51"/1079.8 mm)/16:9
Effective Display Area (W x H)	47.62" x 26.78" (1209.6 x 680.4 mm)	43.14" x 24.26" (1095.8 x 616.4 mm)	37.05" x 20.84" (941.1 x 529.4 mm)
Resolution (H x V)	3840 x 2160	3840 x 2160	3840 x 2160
Brightness (Typ)	500 cd/m ²	500 cd/m ²	500 cd/m ²
Contrast Ratio	1200:1	5000:1	1200:1
Dynamic Contrast Ratio	50000:1	50000:1	50000:1
Response Time	8.0 ms (typ.)	9.5 ms (typ.)	8.0 ms (typ.)
Viewing Angle (Horizontal/Vertical)	178° / 178° (CR>10)	178° / 178° (CR>10)	178° / 178° (CR>10)
Panel Surface Treatment	Anti-Glare (Haze 25 %)	Anti-Glare (Haze 25 %)	Anti-Glare (Haze 25 %)
TERMINAL			
HDMI™ In/HDMI™ Out	HDMI™ TYPE A Connector x 4 (HDCP2.2 supported)/HDMI™x1 (HDCP2.2 supported)		HDMI™ TYPE A Connector x 4 (HDCP2.2 supported)/HDMI™x1 (HDCP2.2 supported)
USB	Type A: DC 5 V/max. 0.9 A, USB 3.0 is supported, Type A: DC 5 V/max. 0.5 A, USB 2.0 is supported, Type A: DC 5 V/max. 0.5 A, USB 2.0 is supported (Internal), Type C: DC 5 V/max. 3.0 A, USB 3.0 is supported, DisplayPort Alternate mode compatible		Type A: DC 5 V/max. 0.9 A, USB 3.0 is supported, Type A: DC 5 V/max. 0.5 A, USB 2.0 is supported, Type A: DC 5 V/max. 0.5 A, USB 2.0 is supported (Internal), Type C: DC 5 V/max. 3.0 A, USB 3.0 is supported, DisplayPort Alternate mode compatible
microSD	microSD/SDHC/SDXC / MAX 1 TB		microSD/SDHC/SDXC / MAX 1 TB
Audio Out	Stereo Mini Jack (ø3.5 mm) x 1, SPDIF x 1		Stereo Mini Jack (ø3.5 mm) x 1, SPDIF x 1
Serial In	Stereo Mini Jack (ø3.5 mm) x 1, RS-232C Compatible		Stereo Mini Jack (ø3.5 mm) x 1, RS-232C Compatible
LAN	RJ45 x 1, 10BASE-T/100BASE-TX/1000BASE-T		RJ45 x 1, 10BASE-T/100BASE-TX/1000BASE-T
IR In	Stereo Mini Jack (ø3.5 mm) x 1		Stereo Mini Jack (ø3.5 mm) x 1
Wi-Fi	Yes (Built-in) IEEE 802.11 a/b/g/n Dual, Wi-Fi certified		Yes (Built-in) IEEE 802.11 a/b/g/n Dual, Wi-Fi certified
Bluetooth®	Yes (USB Dongle) Ver4.2, HID, A2DP		Yes (USB Dongle) Ver4.2, HID, A2DP
GENERAL			
HTML Browser	HTML5 (Vvwd)		HTML5 (Vvwd)
Android-OS	Yes		Yes
Power Supply	AC 110-127 V 50 Hz/60 Hz, 1.9 A	AC 110-127 V 50 Hz/60 Hz, 1.7 A	AC 110-127 V 50 Hz/60 Hz, 1.8 A
Power Consumption	TBD (Shipping Condition)	TBD (Shipping Condition)	TBD (Shipping Condition)
On Mode Average Power Consumption ¹	TBD (Picture Mode: [Natural])	TBD (Picture Mode: [Natural])	TBD (Picture Mode: [Natural])
Power Off Condition	Approx. 0 W	Approx. 0 W	Approx. 0 W
Stand-by Condition	Approx. 0.5 W	Approx. 0.5 W	Approx. 0.5 W
Dimensions (W x H x D) ²	48.64" x 27.92" x 3.28" (1236 x 710 x 84 mm)	44.12" x 25.43" x 3.27" (1121 x 646 x 83 mm)	37.92" x 21.85" x 3.26" (964 x 555 x 83 mm)
Carton Size (W x H x D)	53.90" x 34.41" x 6.50" (1369 x 874 x 165 mm)	47.83" x 30.51" x 6.50" (1215 x 775 x 165 mm)	41.34" x 28.27" x 7.01" (1050 x 718 x 178 mm)
Bezel Width	0.43" (11 mm) (T/R/L), 0.54" (13.8 mm) (B)	0.39" (10 mm) (T/R/L), 0.61" (15.5 mm) (B)	0.33" (8.4 mm) (T/R/L), 0.47" (12 mm) (B)
Weight	Approx. 39.5 lbs. (17.9 kg)	Approx. 29.6 lbs. (13.4 kg)	Approx. 22.7 lbs. (10.3 kg)
Gross Weight	Approx. 52.9 lbs. (24 kg)	Approx. 39.7 lbs. (18 kg)	Approx. 33.1 lbs. (15 kg)
Pitch for Wall-Hanging	VESA Compliant 15.8" x 15.8" (400 x 400 mm), Installed by: M6 screws	VESA Compliant 7.9" x 7.9" (200 x 200 mm), Installed by: M6 screws	VESA Compliant 7.9" x 7.9" (200 x 200 mm), Installed by: M6 screws
Built-in Speaker	20 W		16 W
Orientation	Landscape/Portrait ³		Landscape/Portrait ³
Tilting Angle ⁴	45 degrees forward and backward with landscape/portrait setting		45 degrees forward and backward with landscape/portrait setting
Operating Environment	Temperature: 32 °F to 104 °F (0 °C to 40 °C) for up to 4593 ft (1400 m) altitude/ 32 °F to 95°F (0 °C to 35 °C) for between 4593 ft to 9186 ft (1400 m to 2800 m) altitude Humidity: 20 % to 80 % (No Condensation), Altitude: lower than 9186 ft (2800 m)		Temperature: 32 °F to 104 °F (0 °C to 40 °C) for up to 4593 ft (1400 m) altitude/ 32 °F to 95°F (0 °C to 35 °C) for between 4593 ft to 9186 ft (1400 m to 2800 m) altitude Humidity: 20 % to 80 % (No Condensation), Altitude: lower than 9186 ft (2800 m)
Storage Environment	Temperature: -4 °F to 140 °F (-20 °C to 60 °C), Humidity: 20 % to 80 % (No Condensation)		Temperature: -4 °F to 140 °F (-20 °C to 60 °C), Humidity: 20 % to 80 % (No Condensation)
Operating Time ⁵	16 h/day		16 h/day
OPTIONS			
Early Warning Software ⁶	ET-SWA100/105 Series	ET-SWA100/105 Series	ET-SWA100/105 Series

1: Based on IEC 62087 Ed.2 measurement method.
 2: Not including remote controller sensor box.
 3: When installing the Display vertically, be sure to rotate clockwise and install.
 4: Please contact your sales representative with regard to the tilt angle before installation.
 5: Displaying a still image for a long time may cause burn-in (image persistence artifacts), it could be mitigated when display video image.
 6: Multi Monitoring & Control Software Ver. 2.1 or later is required. Suffix of the part number may differ depending on the license type.

Elaborate 4K Picture Quality down to the Tiniest Details

SQ1H SQ2H SQE2 EQ2 CQE2

With approximately 8,290,000 pixels, about four times the pixels of a Full-HD display, images are highly detailed. This dynamic, large-screen display achieves true-to-life finely nuanced images. With an optimal viewing distance of 1.5 times the screen height, the 4K display renders the information you want to transmit with excellent clarity.



* Images are simulated.

Supports HDR and BT.2020 Emulation

SQ1H EQ2

The SQ1H Series supports HDR (High Dynamic Range) (PQ and HLG). Image reproduction is stunning, from deepest black to sparkling bright highlights. Additionally, they have emulation mode for BT.2020. This enables an emulation display to support the wide color gamut of the ITU-R BT.2020 standard.

Supports the Next-Generation Intel® SDM Specification Slot Standard

SQ1H SQ2H SQE2

The SQ1H/SQ2H/SQE2 Series are equipped with the new Intel® SDM specification slot standard that supports 4K signals. Combined with the interface board, you can easily use a built-in PC and add various interfaces.



High Color Reproduction (6-Axis & 12-Axis Color Correction)

SQ1H SQ2H EQ2
*12-Axis compatible

The color space on LCD displays tends to narrow when the luminance level drops, and it's often accompanied by color phase shifts. Six Axis Coordinate Correction applies image processing to balance the six axes of the three primary colors (RGB) and their complementary colors (CMY).

3-Axis (RGB) Color Correction



6-Axis (RGB/CMY) Color Correction



12-Axis (RGB/CMY and Intermediate Colors) Color Correction



* Images are simulated.

Portrait Installation Capability

* Expect the CQE2 Series.

When the Large size display is installed vertically, it can display a person in almost life-size dimensions. It is ideal for digital signage use because it faithfully reproduces the textures and colors of a model's clothing and accessories. It helps to maintain a high-quality brand image. Vertical installation also has no effect on the lifetime of the panel.



Easy Display of Images Optimized for the Display Content

SQ1H EQ2

Conventional display panels are preset with display modes such as Standard and Dynamic. The SQ1H and EQ2 Series comes with an extensive display menu to let you select the most suitable mode for the content to be displayed and the viewing environment. You can select the best mode for the video source and the place of display.

Vivid Signage Displays images suitable for signage in a bright environment.	Natural Signage Displays images with priority on natural color reproduction.	Standard Displays images faithful to the original.
Surveillance Displays images with reduced brightness and with priority on gradation.	Graphic Suitable for PC input.	DICOM* Display images close to the DICOM Part 14 Grayscale Standard.

*Although the term "DICOM" is used, this product is not medical equipment. Do not use displayed images for medical purposes such as examination or diagnosis.

•Refine Enhancer

Corrects blurry image contours resulting from resizing, etc., to improve the image resolution.

•MPEG Noise Reduction

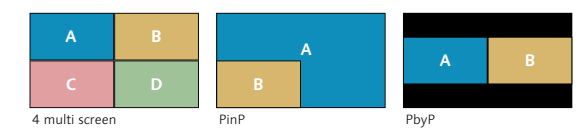
Noise reduction suppresses the block noise and mosquito noise that are characteristic of digital video signals. This faithfully reproduces the inherent beauty of the image.

	OFF	
Refine Enhancer		
	OFF	
MPEG Noise Reduction		

Multi Input Screen Capability with No Processor Required

SQ1H

Multi Input Screen Capability with No Processor Required The SQ1H Series can simultaneously display multiple images on a single screen. In addition to 4 multi screens, the SQ1H Series can display 2 screens, such as PinP and PbyP. This is ideal for checking details in various applications, such as videoconferences, digital signage, and surveillance monitoring.



Brilliant, High-Quality over 1200 cd/m² Images for Bright Lobbies

SQ1H*

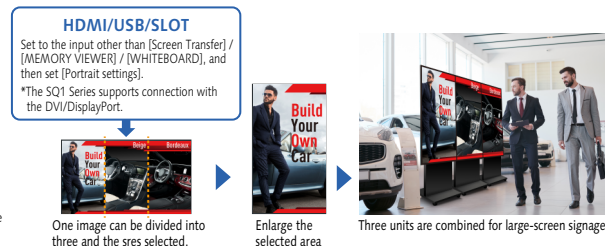
The SQ1H Series provides highly visible signage even in open spaces with natural lighting. A panel with a wide viewing angle is used, and it has an eye-catching effect even when people are moving.

*TH-86SQ1H is 1200 cd/m², TH-75SQ1H is 1500 cd/m².



Dynamic Signage is Possible with the Portrait Zoom SQ1H SQ2H EQ2

Split the content from image sources, and enlarge the display in a portrait orientation. There is no need to use a special device, such as a processor, while creating content from various images. Placing three 65-inch models vertically creates a display equivalent to 112 inches. This enables highly visible store signage.

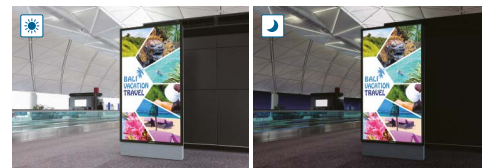


* The picture quality may be degraded when the image is enlarged.

*These functions on the 98/86SQ1 models are compatible with the Software Main Version 3.0000 or later. (For the EQ2 Series: Software Main Version 2.000 or later is required.) Please contact your sales representative with regard to details.

Efficiency and Reliability for Continuous 24-hour Operation SQ1H SQ2H SQE2 CQE2

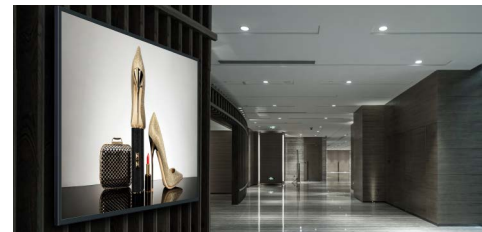
The use of highly durable panel materials and quality electronic components ensures dependable 24-hour operation seven days a week.



* Display of moving images is recommended when panels are in use for long periods to prevent image retention. Note that image burn-in can be gradually rectified with the periodical display of moving images.

A Stylish and slim design Accentuates the Image SQ1H EQ2

The stylish and slim design complies with the ADA standard (a depth of less than 4-inch (approx.100 mm) with brackets) in all important aspects. The narrow bezel displays higher-impact images, further enhancing the 4K picture quality. The slim profile isn't the least oppressive even when installed in a hanging configuration.



* The availability of the TY-WK98PV1 varies depending on the country.

* ADA stands for the "Americans with Disabilities Act," a United States law made to protect people with disabilities from discrimination.

Fanless Design EQ2

Standard models robust fanless design prevents problems caused by the intake of dusty air. The displays can be safely installed and operated in high-traffic environments.

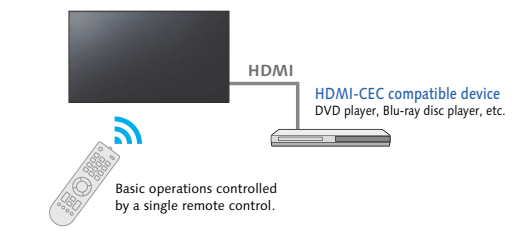
Enables Writing on the Display Screen EQ2

The EQ2 Series is equipped with a whiteboard function. By setting the USB receiver of the mouse on the display, you can use the mouse to write on the display screen and zoom in/out. This is useful for facilitating efficient meetings.



HDMI-CEC Device Linking Supported SQ1H SQE2 EQ2

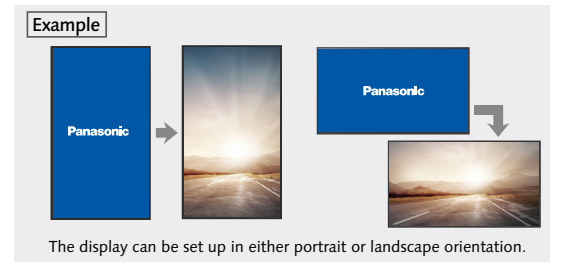
HDMI-CEC compatible devices can be connected to the display by an HDMI cable, enabling the basic operations (such as power ON/OFF) of the compatible devices to be controlled by the display's remote control. Power ON/OFF of the display can also be switched using only the remote control (or main unit buttons) of the HDMI-CEC compatible devices.



* The control of all devices cannot be guaranteed.

Customizable Original Screen SQ1H SQE2 EQ2 CQE2

An original image created by your company or other desired picture can be displayed when the unit is turned on and when there is no input signal. The image data for the original screen can be transferred and stored in the display unit via a USB memory. This function allows a company logo mark, brand image, etc., to be displayed when there is no input signal.



* Certain limitations apply to the format for original screen.
* The SQ1/EQ2 Series is compatible with 3480 x 2160 and 1920 x 1080 resolution.

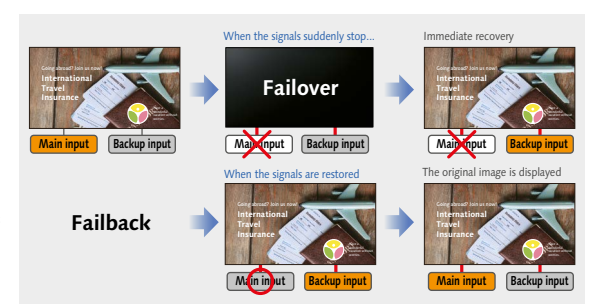
4K Daisy Chain can be Constructed with Even Higher Resolution Multi-Screens SQ1H

The SQ1H Series is equipped with DisplayPort input/output terminals. Construct a multi-screen that can output 4K images by installing multiple units and connecting them in a daisy chain.



Failover and Failback Safeguards for Mission Critical Situations SQ1H EQ2

These models are equipped with a variety of signal input terminals. If the main video and audio signals are interrupted, the system immediately switches to alternative signals. This makes it ideal for mission critical control rooms and surveillance centers. If the main signals are restored, the original image is displayed.



* The usable combinations of main and backup signals are limited. For details, see the product website.

Simple Signage Operation with No STB

SQ1H * SQE2 EQ2

* The playable application format, GUI and operation procedure for the SQE2 Series' Media Player function are different from those of other models.

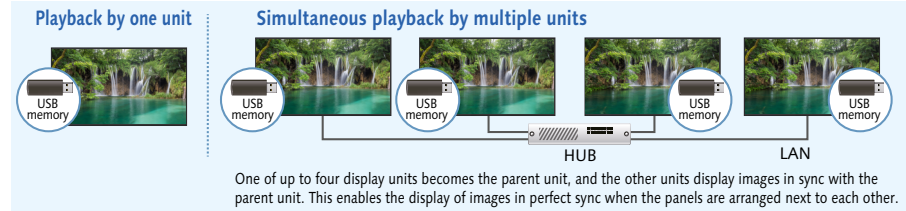
The display can automatically start showing pictures when a USB memory containing data is inserted. The display unit can be used as digital signage without a set-top box or PC. And the content can be displayed smoothly without including the black screen display. What's more, the order of content playback and playback time can be programmed. Content can also be rewritten and multiple displays can be operated via LAN.*



Applicable format	
Still Image	JPG, JPEG, JPE, BMP*
Motion Image	AVI, MKV, ASF, WMV, TS, MTS, MP4, 3GP, MOV, FLV, F4V

* BMP is supported only by the EQ2 Series.
* The SQ1H/SQ1/EQ2 Series is compatible with the 4K signal.

- If it is difficult to insert a USB memory due to installation conditions, use a commercially available extension cable.
- Some files cannot be played back even if they are in the supported format. Regarding restrictions, see the operation manual.
- * Multi Monitoring & Control Software (free) is required.



Play USB Content Instantly

SQ1H * SQE2 EQ2 CQE2

* The playable application format, GUI and operation procedure for the SQE2 Series' Media Player function are different from those of other models.

Playing Full HD video, still images, and digital documents from USB storage devices couldn't be easier. Just insert a thumb drive into the USB port and start presenting without needing to connect a PC. The Memory Viewer app enables image* (JPEG, BMP) and video* (WMV, AVI, MOV, MP4, MPG) selection from handy thumbnail previews.

- * In some cases, files may not be viewable even if they are encoded in a supported format.

Applicable format	
Still Image	JPG, JPEG, JPE, BMP
Motion Image	AVI, MKV, ASF, WMV, GS, MGS, MP4, 3GP, MOV, FLV, F4V

- * The SQE2 and CQE2 Series are not compatible with WMV, MTS and F4V.

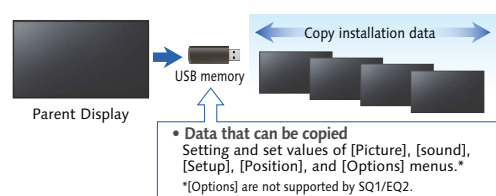


Cloning Function Speeds Up Multiple Display Setup

SQE2

* The GUI and operation procedure for the SQE2 Series' Cloning function are different from those of other models.

When installing multiple displays, the Cloning function lets you use a USB memory (or LAN network) to copy the settings of a parent display to other units, thus greatly shortening the setup time.

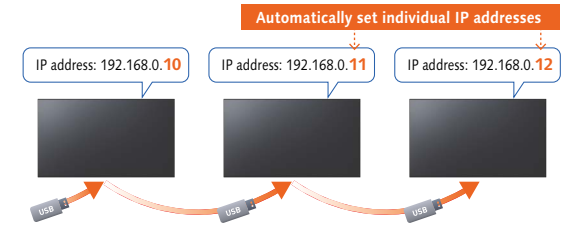


- [Date & Time], [Network Settings], [LAN Settings] and Display ID cannot be copied.
- * The Cloning function works only for displays with the same screen size.

USB Memory Network Settings

SQ1H EQ2

Using a USB memory device, the network setting can be made for multiple displays. Individual IP addresses for each unit are automatically set.



Note: Setting images are simulated.

A Conference Room Audio Mode for Easier Listening

SQ1H EQ2

This function makes voices easier to listen to in video conferences or when the video is displayed, for improved audio quality. A setting is also possible to improve sound muffling when the display is mounted on a wall. If the automatic sound volume adjustment function is used, information sharing is possible with the sound level at a comfortable level.

- * This function on the 98/86SQ1 Series is compatible with the Software Main Version 4.0000 or later. (for the EQ2 Series, Soft Main Version 2.000 or later is required.) Please contact your sales representative with regard to details.

Make Your Signage Easy with Panasonic Application

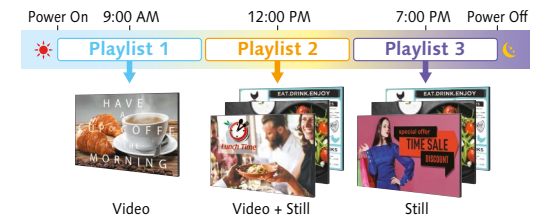
SQ1H SQ2H EQ2

The SQ1H, SQ2H and EQ2 Series features a USB Media Player function that allows easy signage playback. Content Management Software is an application software for scheduling digital signage playback on a computer. It also allows power ON/OFF to be set.

For more information about Content Management Software Version 4.4.0, please visit:
<https://panasonic.net/cns/prodisplays/download/software/>

Play Content Automatically with Scheduling Function

Content Management Software for PC Version 3.3.1 (free) enables easy playlist creation with media support including combinations of still and video images. You can set up schedules for playing and closing your media playlist at predetermined dates and times.



Convenient Playlist and Schedule Syncing

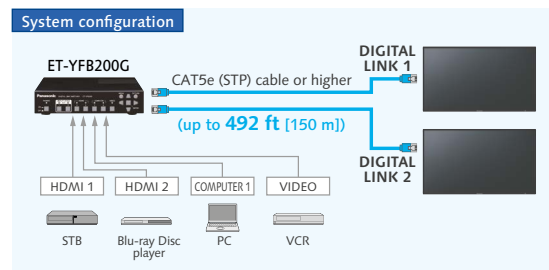
Playlists and schedules created with Content Management Software can be transferred to displays with USB memory, or via LAN. Synchronized playback on multiple displays is also supported.



DIGITAL LINK Function Enables Simple Installation and Low System Costs SQ1H

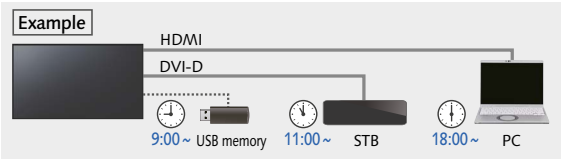
Using DIGITAL LINK makes it possible to transmit video, audio and control signals over a long distance (up to 492 ft [150 m]) with a single LAN cable*. Easy cabling also reduces labor during setup. This provides transmission of high-quality images and sounds, as well as remote control.

* When connected with the [Long reach] mode, the maximum transmission distance is 492 ft (150 m). In this case, the unit can receive the signals of up to 1080/60p. A CAT5e (STP) cable or higher is required. This supports 4K video over distances of up to 164 ft (50 m) with a single LAN cable.



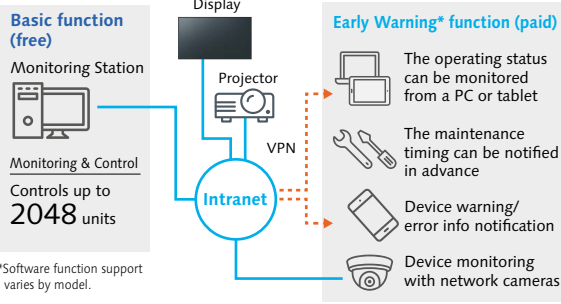
Timer-Programmable Switching of Device Connection EQ2

The timer function of the display unit can be used to change connected signal source devices at a desired time. This allows an easy change of displayed content according to the application or the progress of an event.



Multi Monitoring & Control Software

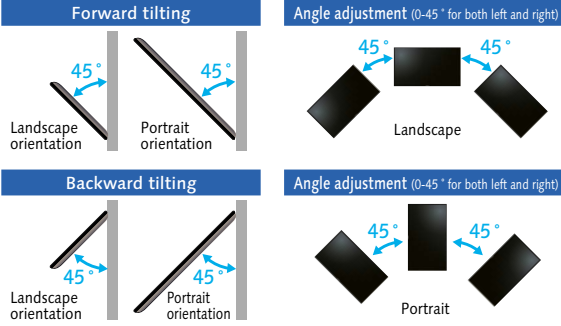
Compatible with Multi Monitoring & Control Software for addition of new functions, such as automatic searching for map displays and registered devices. Displays and peripheral equipment on the intranet can be controlled and their status can be monitored. Also error notification and error indication can be detected by an indication monitoring function (for a fee) for improved maintenance.



Choose the Installation to Match Your Application

Panasonic displays are designed for use in either portrait or horizontal orientation with no effect on panel color and lifespan, further reducing TCO. A tilt installation up to 45 degrees forward or backward is also possible. The angle can be adjusted for easy viewing when installed in a high location.

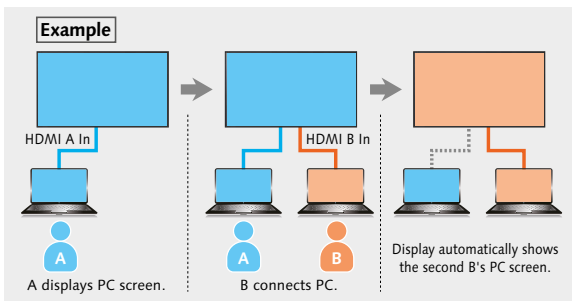
* The installable angle varies depending on the model. For details, see the specifications page for each model. For more information on the specifications page, please visit the download page. (https://panasonic.net/cns/prodisplays/download/spec_manual/)



Smooth Switching of Presenters EQ2

These displays automatically switches source signals when the input signal for the current content stops or when an input signal other than the signal of the current content is received. When presenters change during a meeting, the displayed image can be switched easily by simply changing the cable connection, thus eliminating the need to operate the remote control.

* The 2 switching inputs must be set in advance.
* This function may not operate correctly depending on the image playback device.
* Digital-digital switching is supported by the SQ/EQ Series.



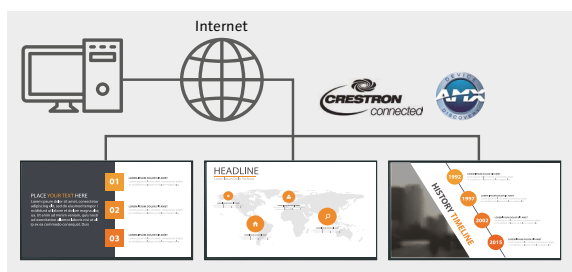
Built-in Speakers for the Playback of Content with Sound All models are supported

The display unit has built-in speakers so that it can playback content with sound without the connection of external speakers. This allows maximum use of a limited space for the installation of a large-screen display



Supports LAN Control Connection SQ1H SQ2H SQE2* EQ2 CQE2* *Crestron connected supported only

The display can be controlled by LAN or RS-232C. You can configure the display into your existing control system, and can control several devices simultaneously.

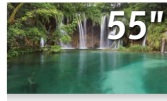
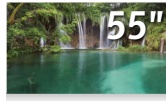


USB Pass Through Function to Save Time and Effort in Meeting Preparation EQ2

USB devices can be connected to the display via a USB Type-A cable and controlled using a PC connected to the EQ2 via the USB Type-C port. If a camera or speakerphone is permanently connected to the display in a conference room, a user can just plug in their PC and immediately control the device to start the meeting.



VF/LFV Series



	Model no.	TH-55VF2HW	TH-55VF2W	TH-55LFV9W
DISPLAY PANEL	Screen size (Diagonal)/Aspect Ratio	55-inch class (54.6"/1387 mm)/16:9	55-inch class (54.6"/1387 mm)/16:9	55-inch class (54.6"/1387.8 mm)/16:9
	Effective Display Area (W x H)	47.6" x 26.7" (1209.6 x 680.3 mm)	47.6" x 26.7" (1209.6 x 680.3 mm)	47.62" x 26.78" (1209.6 x 680.4 mm)
	Resolution (H x V)	1920 x 1080	1920 x 1080	1920 x 1080
	Brightness (Typ.)	700 cd/m ²	500 cd/m ²	500 cd/m ²
	Contrast Ratio	1100:1	1100:1	1200:1
	Dynamic Contrast Ratio	500000:1	500000:1	500000:1
	Response Time	9.0 ms (G to G)	9.0 ms (G to G)	9.0 ms (G to G)
	Viewing Angle (Horizontal/Vertical)	178° / 178° (CR≥10)	178° / 178° (CR≥10)	178° / 178° (CR≥10)
Panel Surface Treatment	Advanced Anti-Glare (Haze 28 %)		Advanced Anti-Glare (Haze 28 %)	
TERMINAL	HDMI In	HDMI Type A Connector x 1		HDMI Type A Connector x 2
	VIDEO In	-		BNC x 1 (Shared with Component In)
	Audio In (L/R)	-		Stereo Mini Jack x 1 (Shared with Component In)
	Component/RGB In	-		BNC x 1 set (Shared with VIDEO In)
	Audio In (L/R)	-		Stereo Mini Jack x 1 (Shared with Video In)
	DisplayPort In	DisplayPort x 1 (DP1.1a Dual Mode Only)		DisplayPort x 1 (DP1.1a / DP1.2)
	DisplayPort Out	-		DisplayPort x 1
	DVI-D In	DVI-D 24-pin x 2 (Female)		DVI-D 24-pin x 1 (Female)
	Audio In (L/R)	Stereo Mini Jack (M3) x 1 (Shared with PC In)		Pin Jack (L+R) x 1 set (Shared with PC In)
	DVI-D Out	-		-
	PC In	Mini D-Sub 15-pin x 1 (Female)		Mini D-Sub 15-pin x 1 (Female)
	Audio In (L/R)	Stereo Mini Jack (M3) x 1 (Shared with DVI-D In)		Pin Jack (L+R) x 1 set (Shared with DVI-D In)
	DVI-I Out	-		DVI-I 29-pin x 1
	USB	USB Connector (TYPE-A) x 1, DC 5 V/500 mA (USB2.0)		USB Connector (TYPE-A) x 1, DC 5V/500mA (USB2.0)
	Serial In/Out	D-Sub 9-pin x 1 (Male) / x 1 (Female), RS-232C Compatible D-Sub 9-pin x 1 (Male) / x 1, RS-232C Compatible		2.5 mm Phone Jack x 1 / x 1
	DIGITAL LINK In/DIGITAL LINK Out	RJ45 x 1 / x 1, 100 BASE-TX, Compatible with long reach mode and PLink™ (Shared with LAN)		-
	LAN	RJ45 x 1 / x 1, (100 BASE-TX, Compatible with PLink™) (Shared with DIGITAL LINK)		RJ45 x 1, 10 BASE-T / 100 BASE-TX, Compatible with PLink™
	IR In/Out	Stereo Mini Jack (M3) x 1 / x 1		Stereo Mini Jack (M3) x 1 / x 1
Audio 1 In	Stereo Mini Jack (M3) x 1		-	
Audio 2 In	L/R Pin Jack x 1		-	
Audio Out	Stereo Mini Jack (M3) x 1, 0.5 V [rms] Variable (-∞ ~ 0 dB) (1 kHz 0 dB Input, 10 kΩ Load)		Stereo Mini Jack (M3) x 1 0.5 V [rms] Variable (-∞ ~ 0 dB) (1 kHz 0 dB Input, 10 kΩ Load)	
GENERAL	Power Requirements	110-127 V AC, 50 Hz/60 Hz		110-127 V AC, 50 Hz/60 Hz
	Power Consumption	300 W		185 W
	Stand-by Condition	Approx. 0.5 W		Approx. 0.5 W
	Dimensions (W x H x D)	47.66" x 26.82" x 3.83" (1210.6 x 681.3 x 97.3 mm)	47.66" x 26.82" x 3.83" (1210.6 x 681.3 x 97.3 mm)	47.78" x 26.94" x 3.86" (1213.4 x 684.2 x 98.0 mm)
	Carton Size (W x H x D)	55.0" x 33.4" x 11.1" (1395 x 848 x 280 mm)	55.0" x 33.4" x 11.1" (1395 x 848 x 280 mm)	55.0" x 33.4" x 11.1" (1395 x 848 x 280 mm)
	Bezel Width	T/B/L/R: 0.018" (0.44 mm)		L/T: 0.089" (2.25mm), R/B: 0.049" (1.25mm)
	Bezel to Bezel ¹	0.034" (0.88 mm) (Multi Screen)		0.14" (3.5 mm) (Multi Screen)
	Weight	Approx. 50.7 lbs. (23.0 kg)		59.5 lbs. (27.0 kg)
	Gross Weight	Approx. 75.0 lbs. (34.0 kg)		81.6 lbs. (37.0 kg)
	Pitch for Wall-Hanging	VESA compliant 15.8" x 15.8" (400 x 400 mm)		VESA compliant 15.8" x 15.8" (400 x 400 mm)
	External Speaker	-		8 Ω, 20 W [10W + 10 W] (10% THD)
	Orientation ²	Landscape/Portrait		Landscape/Portrait
Tilting Angle ²	Vertical Only		Vertical Only	
Operating Environment	Temperature: 32 °F to 104 °F (0 °C to 40 °C) ³ / 32 °F to 95 °F (0 °C to 35 °C) ⁴ / Humidity: 20% to 80% (No Condensation)		Temperature: 32 °F to 104 °F (0 °C to 40 °C) ³ / 32 °F to 95 °F (0 °C to 35 °C) ⁴ / Humidity: 20% to 80% (No Condensation)	
Storage Environment	Temperature: -4 °F to 140 °F (-20 °C to 60 °C) / Humidity: 10% to 90 % (Non condensation)		Temperature: -4 °F to 140 °F (-20 °C to 60 °C) / Humidity: 10% to 90 % (Non condensation)	
Operating Time ⁵	24 h/day		24 h/day	
OPTIONS	Cover Frame Kit	-		-
	Installation Mount	TY-VK55LV2	TY-VK55LV2	TY-VK55LV2
	Early Warning Software ⁶	ET-SWA100/105 Series	ET-SWA100/105 Series	ET-SWA100/105 Series
	Auto Display Adjustment Upgrade Kit ⁷	TY-VUK10	TY-VUK10	TU-VUK10
	Multi Window Processor	-		-

1: Bezel-to-Bezel distance means the combined top and bottom (or left and right) bezel width of adjacent displays in multi-screen. The gap between displays is not included. Note a gap of 0.02" (0.5 mm) or more is required when installing multiple displays.

2: Please contact your sales representative with regard to the tilt angle before installation.

3: For up to 4593 ft (1400 m) altitude.

4: For between 4593 ft (1400m) to 9186 ft (2800 m) altitude.

5: In case of long time, the moving image is recommended to be displayed. If you display a still picture for an extended period, the image retention might remain on the screen. However, image retention can gradually disappear by displaying a moving images.

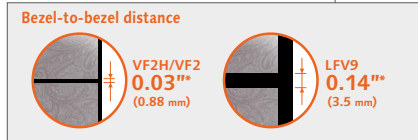
6: Multi Monitoring & Control Software Ver. 2.1 or later is required. Suffix of the part number may differ depending on the license type.

7: Download the latest Video Wall Manager from Global Website in advance. (<https://panasonic.net/cns/prodisplays/download/software/vwm/>)

Narrow Bezel for Seamless Video Walls

VF2H/VF2 LfV9

Narrow frames on Panasonic's LCD Video Wall Series reduce bezel-to-bezel distance to a near-invisible 0.03". Even when viewed close-up, screen borders are almost indiscernible, resulting in truly spectacular large-format images.



* TH-55VF2H/55VF2 features 0.03" (0.88 mm), and TH-55LFV9 0.14" (3.5 mm), bezel-to-bezel distance. Bezel-to-bezel distance refers to the combined top and bottom (or left and right) bezel-width of adjacent displays in video-wall configuration. The gap between displays is not included. Note that a gap of 0.02" or more is required when installing multiple displays.

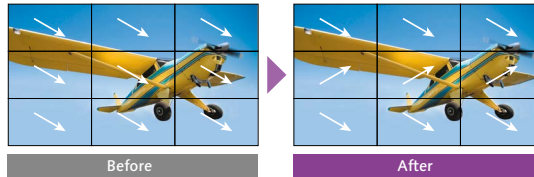
Improved Multi-Screen Video Visibility

VF2H/VF2

When high-speed video is played on multiple screens in a video wall, some image misalignment can occur between vertically adjacent panels. VF2H, and VF2 Series feature a Reverse Scan Function that alternates the scanning direction of vertically adjacent displays to improve image alignment. Frame Control Function, meanwhile, adjusts the number of video frames displayed to reproduce images with natural fluidity.

Reverse Scan Function

Reverses direction of image scanning to smoothly play enlarged video on multiple screens



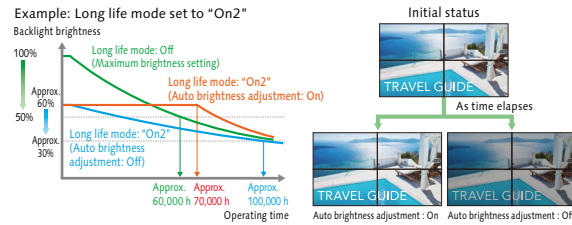
Note: Images are simulated.

Delivers Stable Brightness for Up to 8 Years*

VF2H/VF2

The VF2H, and VF2 Series incorporates Long Life mode and a new Auto Brightness Adjustment function. In Long Life mode, backlight brightness is optimized to extend product life. Auto Brightness Adjustment function corrects light output automatically according to the rate of backlight deterioration to maintain constant brightness for longer.

Long Life mode & Auto Brightness Adjustment function



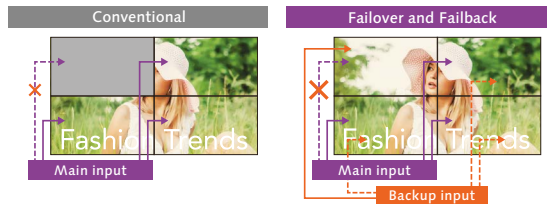
* Figure is approximate when operating continuously for 24 hours x 365 days.

Note: Assuming operating conditions of 25 °C (± 2 °C). Environmental conditions and conditions of usage may affect brightness longevity and operating period. "On2" delivers approximately 60% maximum specified backlight brightness. Auto brightness adjustment cannot be turned on if panel illumination period has exceeded 1,000 hours. Note: Images and graphs are simulated.

Failover and Failback Safeguards Maintain Image Display

VF2H/VF2 LfV9

Digital signal inputs comprise one or two DVI-D terminals together with HDMI, DisplayPort, DIGITAL LINK*, and USB terminals. If primary audio-video signals are interrupted, the display immediately switches to an alternative input. This makes the Panasonic LCD Video Wall Series well suited for use in control rooms and in other applications where uninterrupted playback is essential.



If AV signals via the primary input is interrupted, images are no longer displayed.

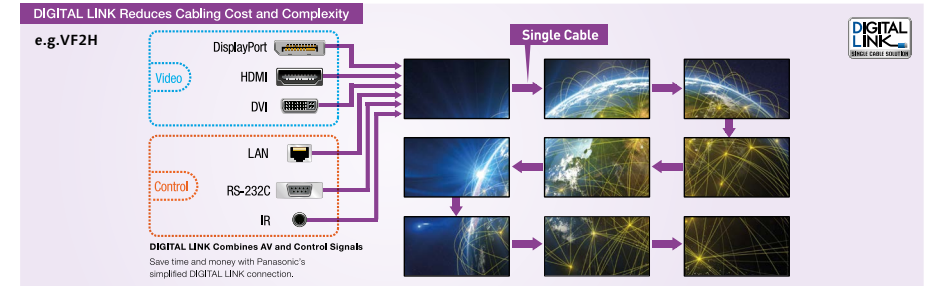
If the primary AV signal is interrupted, the system automatically switches to a backup input so video display is maintained.

Note: Possible combinations of main/backup input signals are limited. For details, please visit the Panasonic website.

DIGITAL LINK Simplifies Installation at Lower Cost

VF2H/VF2

Based on HDBase™ technology, the DIGITAL LINK connection on VF2H, VF2 Series displays supports audio, video, and control signal transmission over long distances, and can also be used to daisy-chain multiple displays via a single cable. This eliminates the need for video splitters and other routing devices. The LFV9 Series, meanwhile, supports daisy chain via DVI with separate video and control (serial or IR) connections. Note: CAT5e or higher STP cable required.

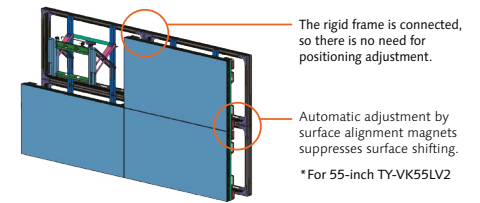


Installation Frame Simplifies Set-up

VF2H/VF2 LfV9

The optional Installation Mount makes it much easier to configure a video wall. There's no need for complicated display positioning, and fluctuations between installers are covered. It also saves time and cuts labor costs.

Video wall fluctuations occur when the bezels are not correctly aligned vertically and horizontally and the surfaces are not properly adjusted. Installation is quick and easy using the rigid frame, with easy adjustment using surface alignment magnets. This structure also makes the displays easier to remove when performing maintenance.



* The following is the maximum number of units when installing a multi-screen using the optional TY-VK55LV2 metal fittings.

- TH-55VF2H/VF2: 4 columns, 5 rows
- TH-55LFV9: 9 columns, 11 rows

*Landscape setting only.

Video Wall Manager Software and Auto Display Adjustment Upgrade Kit

VF2H/VF2 LfV9

Panasonic's free Video Wall Manager software can be used with LCD Video Wall Series displays. With this software, you can calibrate display color using a color sensor1 (optional), adjust display settings, and control and manage data via PC. If you upgrade this software with an optional TY-VUK10 Auto Display Adjustment Upgrade Kit, you can adjust brightness and color among multiple displays automatically using a compatible camera (Nikon D5200/D5300/D5500/D5600/D7500)2.

- 1 Applicable sensors: KONICA MINOLTA (CA-210, CA-310, CA-410 [Probe CA-VP427, CA-P410, CA-P427, CA-MP410 verified as of June 30, 2020]), Datacolor (Spyder4, Spyder5, SpyderX) X-Rite (i1Pro2)
- 2 Available only with normal zoom lens: AF-S DX NIKKOR 18-55 mm f/3.5-5.6G VR, AF-S DX NIKKOR 18-140 mm f/3.5-5.6G ED VR, AF-S DX NIKKOR 18-55 mm f/3.5-5.6G VR II, AF-P DX NIKKOR 18-55 mm f/3.5-5.6G VR

With VF2H and TY-VUK10 connected



Auto Display Adjustment Upgrade Kit: <https://panasonic.net/cns/prodisplays/products/ty-vuk10/>

Panasonic display ideas for a wide range of applications

Meeting room



High image quality at 4K. Complex drawings and large amounts of text can be accurately shared.

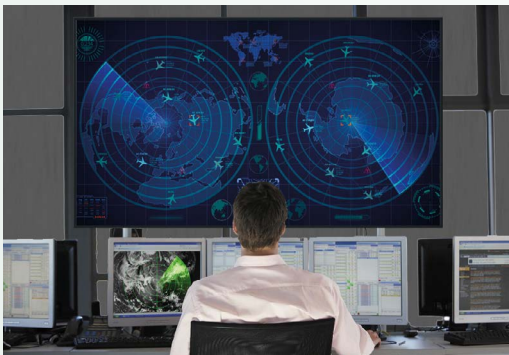
With Panasonic, a wide range of terminals are available. Can be used immediately after installing.

Recommended models

• EQ2/CQE2 Series >> 14p~

• PressIT >> 36p~

Control room



Use a 24/7 operation display where interrupted images are simply not permitted.

Recommended models

• SQE2 Series >> 10p~

• VF/LFV Series >> 30p~

Retail shop



For attractive product displays, the 4K model is also recommended for in-store signage. The narrow bezel provides effective space utilization.

An easy-to-see angle can also be adjusted. And Content Management Software makes it easy to control signage for individual shops.

Recommended models

• EQ2/CQE2 Series >> 14p~

• Content Management Software >> 44p

Classrooms



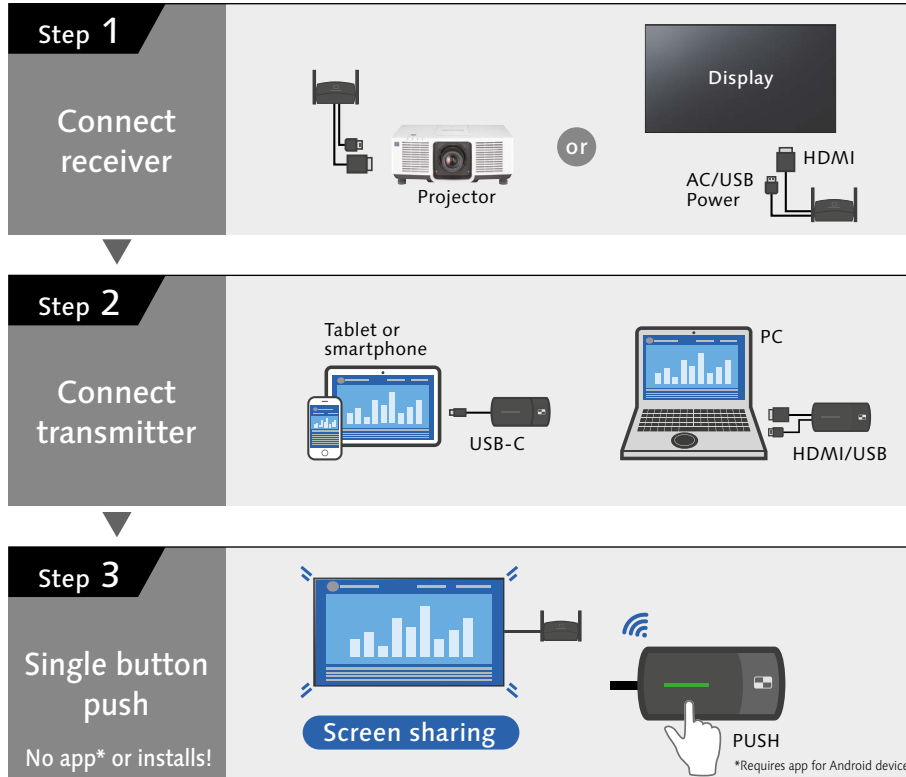
Installation is possible at a forward inclination of up to 20 degrees to maintain legibility when mounted in high places.

Displays course materials for easy viewing even in a bright room.

Recommended models

• EQ2/CQE2 Series >> 14p~

- 1 Easy connections with no app
- 2 Single button push a screen sharing
- 3 Multi-screen sharing up to 4



Connects to mobile devices
Genuine Digital AV adaptor by Apple is required.

Presents 4 screens in Full HD
[supports 4K]

High-definition video
max. resolution: 1920 x 1080 pixels, 60p

Low latency image

Connects up to 32 transmitters at once

Lock mode prevents interrupts

HDMI-CEC command compatible

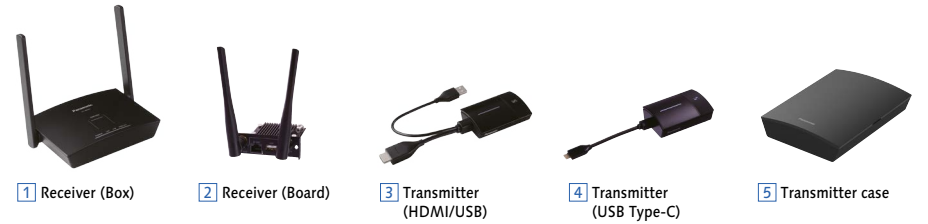
Supports audio transmission

Share screen without transmitter¹

Shared from one transmitter to multiple receivers¹

¹ Firmware update is required. For details, please contact your dealer

Lineup



	Basic Set		Receiver (Box)	Receiver (Board)	Transmitter (HDMI)		Transmitter (USB Type-C)	
Model	TY-WPS1	TY-WPSC1	TY-WPR1	TY-SB01WP	TY-WP2B1	TY-WPB1	TY-WP2BC1	TY-WPBC1
Applicable product	Flat Panel Display / Projector (Panasonic and others)		PC/Tablet/ Smartphones	SQ1H/SQ2H/SQ1/SQE2/EQ2/BQ1 Series	PC/Tablet/Smartphone			
What's included?	1 Receiver (Box) x1 3 Transmitter (HDMI) x2 5 Transmitter case x1	1 Receiver (Box) x1 4 Transmitter (USB Type-C) x2 5 Transmitter case x1	1 Receiver (Box) x1	2 Receiver x1	3 Transmitter (HDMI) x2 3 Case x1	3 Transmitter (HDMI) x1	4 Transmitter (USB Type-C) x2 5 Case x1	4 Transmitter (USB Type-C) x1

Specifications

Product	Receiver (Box)	Receiver (Board)	Transmitter (HDMI)	Transmitter (USB Type-C)
Max resolution/ Framerate	1920 x 1080/60p (max), 3840 x 2160/30p (max)		1920 x 1080/60p (max)	
Number of simultaneous connections	32		-	
Number of sources simultaneous on screen	4		-	
Data Rate	Wired	10/100/1000 (Mbps)		-
	Wireless	Max. 867 Mbps	Max. 433 Mbps	
Frequency band	5 GHz band 5,150 MHz - 5,250 MHz 36 40 44 48 Channel			
Wireless transmission protocol	IEEE802.11a/n/ac		IEEE802.11ac	
Security	WPA/WPA2/WPA3 (WPA3-Enterprise is not supported)			
Reach (Max distance between transmitter and receiver)	Max. 30 m (When the line of sight/wave conditions are good)			
Terminals	HDMI/USB-A (female) /RJ45(LAN)		HDMI/USB-A (male)/USB-A (female)	USB-C (male)/USB-A (female)
Power	DC 5 V/2 A	12 V/0.9 A (Display Power supply)	DC 5 V/0.9 A	
Power consumption	10 W		4.5 W	
Operating Environment	Temperature	32 °F to 95 °F (0 °C to 35 °C)	32 °F to 131 °F (0 °C to 55 °C)	32 °F to 95 °F (0 °C to 35 °C)
	Humidity	20 % to 80 % (No condensation)	20 % to 80 % (No condensation)	20 % to 80 % (No condensation)
Dimensions (W x H x D)	4.71" x 1.03" x 3.19"/120 x 26 x 81 mm (Excluding antenna)	3.22" x 0.99" x 4.78"/82 x 25 x 122 mm (Excluding antenna)	2.00" x 0.80" x 2.86"/51 x 21 x 73 mm (Excluding cables)	2.00" x 1.00" x 2.86"/51 x 26 x 73 mm (Excluding cables)
Weight	Approx. 0.4 lbs / 181 g	Approx. 0.3 lbs / 125 g	Approx. 0.3 lbs / 110 g	Approx. 0.3 lbs / 110 g

*Case: Dimensions (W x H x D: 6.0" x 1.7" x 7.8" (151.3 x 41.6 x 198.0 mm)), Weight: Approx. 0.7 lbs / 315 g

For more information, please visit the following website.
<https://panasonic.net/cns/prodisplays/pressit>



Fully Integrated Wireless Presentation System

No cables, no dongles, no set-top boxes.
All you have to do is present.



TY-SBPURE
SDM receiver



Flexible BYOD for SQE2, SQ1H SQ2H and EQ2 Series:
Supports Airplay, Miracast, Chromecast



4K UHD output resolution:
up to 4 windows on-screen



100% data encryption:
Stable and secure system based on Linux Operating System



Touch back function:
control your PC directly from the interactive display



Advanced administration:
Can be managed and updated remotely using browser-based administration tools.



HTML-5 page: as a screensaver for on-screen display of images, videos or as digital signage player.

Providing a more realistic meeting with the 360-degree camera speakerphone



360 degree camera speakerphone
TY-CSP1

Camera	Viewing angle: 360-degrees Shooting resolution: 2560 x 1440@30p x 4
Microphone	7
Speaker	Output 3 W
Dimensions	Diameter ϕ 63.4 mm/2.5" (excluding the pedestal part) x Height 285 mm/11.3"

Optimal Video and Audio Transmission

TY-CSP1 is a hybrid conference terminal that enables 360-degrees horizontal shooting using four cameras and features microphones and speaker that also cover a wide range of 360 degrees. It supports natural communication with people participating in web conferences with its clear sound collection and amplification.

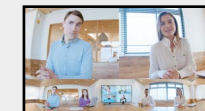
Simple Operation

For easy set-up and use, video, audio and power are shared to the PC via a single USB Type-C cable to save labor when preparing for a meeting. Volume and Video views can be controlled using the buttons arranged on the main unit pedestal. Operating status is instantly visible from the colored LED ring on the unit, it is possible to operate it intuitively.

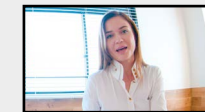
Installation and Portability

With a diameter of ϕ 63.4 mm (2.5 inches) that is easy to grip, it is possible to freely carry it around inside the office and easily carry out web conferences. Alternatively, it can be attached to a tripod or set securely fastened with security slots.

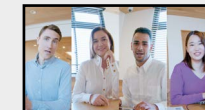
Equipped with various video modes



Dual View



Single View



Multi View



Surround View



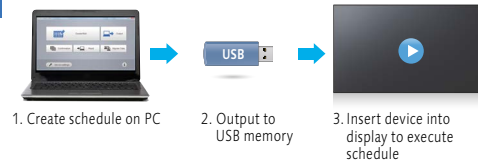
Stable View

Panasonic Software Line-up

In order to maximize the use of professional displays, Panasonic offers a variety of software and applications (some free of charge, and others for a fee).

Content Management Software Windows

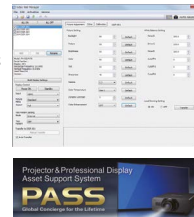
Content Management Software makes it possible to create scheduling data and media playlist on a PC and save it to one or more USB memory. Insert the media into Space Players to execute the schedule. The software reduces complexity for temporary installations or where the device is frequently moved from place to place.



Compatible Display: SQ1H Series, SQ1 and EQ2 Series
<https://panasonic.net/cns/prodisplays/download/software/>

Auto Display Adjustment Upgrade Kit (TY-VUK10)

Panasonic's free Video Wall Manager software can be used with LCD Video Wall Series displays. With this software, you can calibrate display color using a color sensor, adjust display settings, and control and manage data via PC. If software is upgraded with an optional TY-VUK10 Auto Display Adjustment Upgrade Kit, brightness and color among multiple displays can be automatically calibrated using a compatible camera ((Nikon D5200/D5300/D5500/D5600/D7500)*. USB.



* Available only with normal zoom lens: AF-S DX NIKKOR 18-55 mm f/3.5-5.6G VR, AF-S DX NIKKOR 18-140 mm f/3.5-5.6G ED VR, AF-S DX NIKKOR 18-55 mm f/3.5-5.6G VR II, AF-P DX NIKKOR 18-55 mm f/3.5-5.6G VR

For more information, please visit the PASS: <https://panasonic.net/cns/prodisplays/pass/>

Screen Transfer

Screen Transfer is a software that allows a computer screen to be displayed onto one or more displays of devices that are connected by wired LAN. See the User's Manual for the operating method.



Version	Ver. 2.0	Ver. 1.0
Number of device connections	Max. 64 units	Max. 8 units
Bandwidth	Approx. 10 Mbps (regardless of the number of connected devices)	Approx. 80 Mbps (when 8 devices are connected)
Auto reconnection	Yes	—
Delivery status check	Yes	—

* Video distribution can be with existing IP network infrastructure

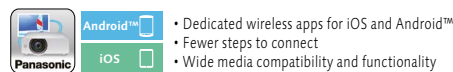
Compatible Display: SQ1H Series, SQ1 and EQ2 Series
https://panasonic.net/cns/prodisplays/download/software/scr_transfer/

* The number of connections and functions may vary depending on the model. Please refer to the web for details.

Mobile App (iOS/Android)

Wireless Projector

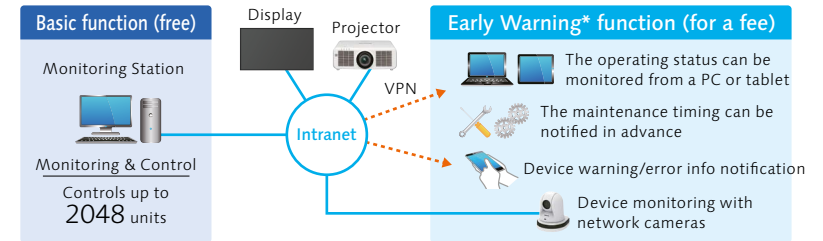
This is an application that lets you send displayed screenshot, document files (PDF, PowerPoint, Excel, Word), and JPEG/PNG images saved to Android devices (tablets and smartphones) to a Panasonic wireless display over a wireless LAN (Wi-Fi), and display them. The application also lets you rotate the screen, enlarge or reduce the screen with a pinch operation, and flip through pages with a flick operation.



For more information, please visit the Website:
<https://panasonic.net/cns/prodisplays/download/software/#wireless>

Multi Monitoring & Control Software Windows

This free Panasonic software offers monitoring and control of up to 2,048 projectors and professional displays over a LAN network from a single PC to simplify management and maintenance while supporting stable operation. If you also purchase Early Warning Software (ET-SWA100), it will monitor the status of projectors and displays on the intranet and inform you of errors when it detects signs of trouble. This contributes to a lighter maintenance load and reduces costs.

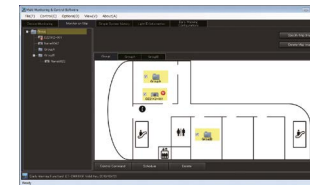


* Software function support varies by model.
 * Multi Monitoring & Control Software Ver. 2.0 or higher is required to use the Early Warning function.

Features

• Map Display

Image files, such as floor plans, can be loaded, and the icon for each device can be positioned by 'Drag & Drop'.



• Auto Search of the Devices to Be Registered

You can select the devices to be registered from devices automatically searched on the network.^{*1}

• Other Features

- Monitoring of the status of each device^{*2}
- Execution of control commands
- Scheduling function
- Delivery of the contents list^{*3}

Early Warning Function (ET-SWA100)

Maintenance Scheduling Suggestion^{*3}

It is easier to plan for maintenance by predicting the approximate time for maintenance and service based on the usage monitoring.

Video Stop Detection Using a Network Camera

Images of registered projectors or displays can be monitored regularly by a supported network camera^{*4}. You can also receive a notification when an abnormality such as a blackout or an image freeze happens.

If you install 'Multi Monitoring & Control Software,' a free 90-day trial is automatically available.



*1: Some devices can't be registered using the auto search function depending on the device status and network environment.
 *2: Software functionality varies depending on the model. *3: Function for supported projectors and professional displays only.
 *4: Panasonic Network camera (BB-S/DG-S/WV-S series), Panasonic PTZ camera (AW-UE70/HE40/HE130 series).

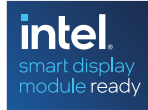
For more information about compatible displays, please visit the Website:
https://panasonic.net/cns/prodisplays/download/software/multi/dl_files/DeviceList-Multi_EN.pdf

Early Warning function License * If you install *Multi Monitoring Control Software*, a free 90 day trial.
 For more information, please visit the PASS: <https://panasonic.net/cns/prodisplays/pass>

SDM Accessories

Supports the Next-Generation Intel® SDM Specification Slot Standard

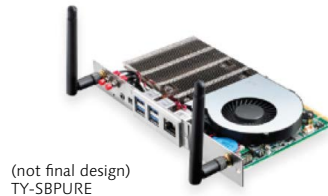
The SQ1H/SQ2H/SQE2/EQ2 Series is equipped with the new Intel® SDM specification slot standard that supports 4K signals. With this expansion slot, it is possible to tailor the display and its connectivity to the application. You can easily integrate a built-in PC and add various interfaces.



Wolfvision Cynap Pure -integrated Wireless Presentation System

No Cable. No Dongle. No Set-Top Box. Just Present.

Panasonic fully integrates WolfVision's Cynap Pure powerful BYOD wireless presentation solution into its SQ1H/SQ2H/SQE2/EQ2 displays using the Intel® Smart Display Module slot. The unified collaboration system is the perfect, integrated solution for meeting rooms, classrooms and huddle spaces with a discrete design, no cabling and no need for additional applications, software and driver downloads or dongles and set-top boxes. Installation inside the screen is straightforward, and units can be managed and updated remotely using browser-based administration tools.



Key Features

- Screen Mirroring using Miracast technology. Supports iOS, iPadOS, Android, Windows, Chrome OS, macOS.
- 4K output resolution.
- Up to 4 window on-screen display.
- Touch back support, enables remote control of laptops while working at a shared multi-touch screen.
- Also compatible with SDM enables interactive touchscreens from Panasonic for easy control by touch and for on-screen annotations

Panasonic Wireless Presentation System

Efficient Meeting Room Collaboration

The System allows up to easily switch between up to four presenters to display visual and audio content on their Panasonic displays or projectors – removing the need for cables. Users simply connect the transmitter to any device and press the button to share content on the display or through a projector.

It is also possible to share from mobile devices with an app. Two types of receivers are possible: The SDM receiver is designed to perfectly fit inside the Intel® SDM expansion slot of the Panasonic SQ1H/SQ2H/SQE2/EQ2 displays. For Panasonic displays and projectors without an SDM slot for the receiver, a set-top box version of the system can be connected to the device by cable.



Key Features

- Two versions: basic with the set-top-box or cable-less with the SDM-S board receiver.
- Plug and Play: no dedicated software installation is necessary for the PC.
- Audio and FHD Video over Wireless transmission, IEEE802.11ac compliant.



12G SDI - SDM Board

Perfect for Broadcasting Environment

Just by plugging the SDI terminal board into its Intel® SDM slot you can directly connect the SQ2H and EQ2 series displays to a Pro AV source, saving the need for optional equipment like converters that normally bring latency into the production chain. You can transmit uncompressed, unencrypted digital video signals over up to 100m with a single BNC cable, in environments where cabling could be unplugged or tripped over.



This SDM-SDI Terminal Board makes the Panasonic SDM enabled range of displays perfect for a broadcast environment, with its great colour reproduction and high contrast with HDR and BT.2020 emulation.



Key Features

- TY-SB01QS- compatible with 3G-SDI, 12G SDI, HD-SDI audio and video formats.
- To be plugged inside professional displays with Intel SDM slot.
- Maximum Transmission distance 100m with BNC cable.



Optional Accessories

		High Brightness		Standard				Standard			
		TH-86SQ1HW	TH-75SQ1HW	TH-98SQ2HW	TH-86SQ2HW	TH-75SQ2HW	TH-65SQ2HW	TH-55SQ2HW	TH-50SQ2HW	TH-43SQ2HW	
Screen Size (inch)		86	75	98	86	75	65		55	50	43
FUNCTION BOARD											
12G-SDI Terminal Board	TY-SB01QS	Yes	Yes	Yes	Yes	Yes	Yes		Yes	Yes	Yes
3G-SDI Terminal Board	TY-SB01SS	Yes ¹	Yes ¹	-	-	-	-		-	-	-
Wireless Presentation System Receiver Board	TY-SB01WP	Yes	Yes	Yes	Yes	Yes	Yes		Yes	Yes	Yes
DIGITAL LINK Board	TY-SB01DL	Yes	Yes	Yes	Yes	Yes	Yes		Yes	Yes	Yes
MOUNTING OPTIONS											
Pedestal	TY-ST75PE9	-	-	-	-	Yes	Yes		-	-	-
	TY-ST55PE9	-	-	-	-	-	-		Yes	-	-
	TY-ST43PE9	-	-	-	-	-	-		-	Yes	Yes
	TY-ST43PE8	-	-	-	-	-	-		-	-	-
	TY-ST32PE2	-	-	-	-	-	-		-	-	-
Wall-hanging Bracket	TY-WK98PV1	Yes	Yes	Yes	Yes	Yes	Yes		-	-	-
Installation Mount (Landscape setting only)	TY-VK55LV2	-	-	-	-	-	-		-	-	-
Pitch for Wall Hanging (VESA compliant models)	800 x 500 (M8)	-	-	-	-	-	-		-	-	-
	800 x 400 (M8)	Yes	Yes	Yes	-	-	-		-	-	-
	600 x 500 (M8)	-	-	-	-	-	-		-	-	-
	600 x 400 (M8)	-	-	-	Yes	Yes	-		-	-	-
	600 x 400 (M6)	-	-	-	-	-	-		-	-	-
	400 x 400 (M8)	-	-	-	-	-	Yes		-	-	-
	400 x 400 (M6)	-	-	-	-	-	-		Yes	Yes	-
	400 x 200 (M6)	-	-	-	-	-	-		-	-	-
	200 x 200 (M6)	-	-	-	-	-	-		-	-	Yes
	100 x 100 (M4)	-	-	-	-	-	-		-	-	-
OTHERS											
DIGITAL LINK Switcher	ET-YFB200G	Yes	Yes	-	-	-	-		-	-	-
Digital Interface Box	ET-YFB100G	-	-	-	-	-	-		-	-	-
SOFTWARE											
Content Management Software (free)		Yes	Yes	Yes	Yes	Yes	Yes		Yes	Yes	Yes
Screen Transfer (free)		Yes ²	Yes ²	Yes	Yes	Yes	Yes		Yes	Yes	Yes
Multi Monitoring & Control Software Compatible (free)		Yes	Yes	Yes	Yes	Yes	Yes		Yes	Yes	Yes
Early Warning Software Compatible (ET-SWA100 Series) ⁴		Yes	Yes	Yes	Yes	Yes	Yes		Yes	Yes	Yes
Video Wall Manager (free)		Yes	Yes	Yes	Yes	Yes	Yes		Yes	Yes	Yes
Auto Display Adjustment Upgrade Kit (TY-VUK10)		-	-	-	-	-	-		-	-	-

The specification has a case to change without notice.

1: This terminal board is supported only when the main software version of the display is 3.5000 or later and the sub software version of the display is 03.50 or later. For update, please contact your Panasonic dealer.

2: The Software Main Version 1.10 or later is required.

3: The Software Main Version 4.40 or later is required.

4: The part number suffix may differ depending on the license type.

Panasonic Software Line-up

Content Management Software



Content Management Software makes it possible to create scheduling data and media playlist on a PC. The software reduces complexity for temporary installations or where the device is frequently moved from place to place.



1. Create schedule on PC
2. Output to USB media
3. Insert device into display to execute schedule

Compatible Display: SQ1H Series, SQ2H Series, EQ2 Series and BQ1 Series

Whiteboard Software



This simple software is easy to operate. Requiring no PC installation, it can be started and used from external memory. Switching to a convenient, simple menu when using the Remote Pointer is also supported.



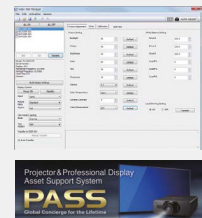
Compatible Displays: BQ1 Series

Auto Display Adjustment Upgrade Kit (TY-VUK10)

Panasonic's free Video Wall Manager software can be used with LCD Video Wall Series displays. With this software, you can calibrate display color using a color sensor, adjust display settings, and control and manage data via PC. If software is upgraded with an optional TY-VUK10 Auto Display Adjustment Upgrade Kit, brightness and color among multiple displays can be automatically calibrated using a compatible camera (Nikon D5200/D5300/D5500/D5600/D7500)*.

* Available only with normal zoom lens: AF-S DX NIKKOR 18-55 mm f/3.5-5.6G VR, AF-S DX NIKKOR 18-140 mm f/3.5-5.6G ED VR, AF-S DX NIKKOR 18-55 mm f/3.5-5.6G VR II, AF-P DX NIKKOR 18-55 mm f/3.5-5.6G VR

For more information, please visit the PASS: <https://panasonic.net/cns/prodisplays/pass/>



For information that is not included on this page, please visit the following website: <https://panasonic.net/cns/prodisplays/index.html>

Optional Accessories

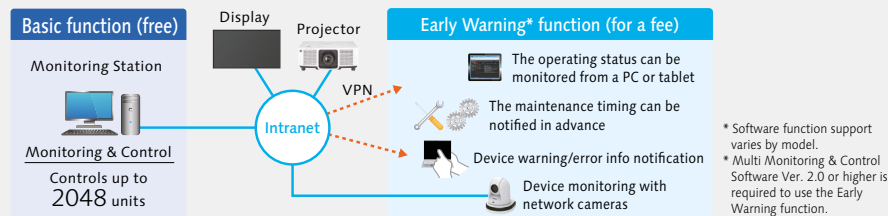
		Standard						Standard						
		TH-98SQE2W	TH-86SQE2W	TH-75SQE2W	TH-65SQE2W	TH-55SQE2W	TH-50SQE2W	TH-43SQE2W	TH-86EQ2W	TH-75EQ2W	TH-65EQ2W	TH-55EQ2W	TH-50EQ2W	TH-43EQ2W
Screen Size (inch)		98	86	75	65	55	50	43	86	75	65	55	50	43
FUNCTION BOARD														
12G-SDI Terminal Board	TY-SB01QS	Yes	Yes	Yes	Yes	Yes	Yes	Yes	Yes	Yes	Yes	Yes	Yes	Yes
3G-SDI Terminal Board	TY-SB01SS	-	-	-	-	-	-	-	Yes	Yes	Yes	Yes	Yes	Yes
Wireless Presentation System Receiver Board	TY-SB01WP	Yes	Yes	Yes	Yes	Yes	Yes	Yes	Yes	Yes	Yes	Yes	Yes	Yes
DIGITAL LINK Board	TY-SB01DL	Yes	Yes	Yes	Yes	Yes	Yes	Yes	Yes	Yes	Yes	Yes	Yes	Yes
MOUNTING OPTIONS														
Pedestal	TY-ST75PE9	-	-	-	-	-	-	-	-	Yes	Yes	-	-	-
	TY-ST55PE9	-	-	-	-	-	-	-	-	-	-	Yes	-	-
	TY-ST43PE9	-	-	-	-	-	-	-	-	-	-	-	Yes	Yes
	TY-ST43PE8	-	-	-	-	-	-	-	-	-	-	-	-	-
	TY-ST32PE2	-	-	-	-	-	-	-	-	-	-	-	-	-
Wall-hanging Bracket	TY-WK98PV1	-	-	-	-	-	-	-	Yes	Yes	Yes	-	-	-
Installation Mount (Landscape setting only)	TY-VK55LV2	-	-	-	-	-	-	-	-	-	-	-	-	-
Pitch for Wall Hanging (VESA compliant models)	800 x 500 (M8)	-	-	-	-	-	-	-	-	-	-	-	-	-
	800 x 400 (M8)	Yes	-	-	-	-	-	-	-	-	-	-	-	-
	600 x 500 (M8)	-	-	-	-	-	-	-	-	-	-	-	-	-
	600 x 400 (M8)	-	Yes	Yes	-	-	-	-	Yes	Yes	-	-	-	-
	600 x 400 (M6)	-	-	-	Yes	-	-	-	-	-	Yes	-	-	-
	400 x 400 (M8)	-	-	-	-	-	-	-	-	-	-	-	-	-
	400 x 400 (M6)	-	-	-	-	Yes	-	-	-	-	-	Yes	Yes	-
	400 x 200 (M6)	-	-	-	-	-	-	-	-	-	-	-	-	-
200 x 200 (M6)	-	-	-	-	-	Yes	Yes	-	-	-	-	-	Yes	
100 x 100 (M4)	-	-	-	-	-	-	-	-	-	-	-	-	-	
OTHERS														
DIGITAL LINK Switcher	ET-YFB200G	-	-	-	-	-	-	-	-	-	-	-	-	-
Digital Interface Box	ET-YFB100G	-	-	-	-	-	-	-	-	-	-	-	-	-
SOFTWARE														
Content Management Software (free)		-	-	-	-	-	-	-	Yes	Yes	Yes	Yes	Yes	Yes
Screen Transfer (free)		-	-	-	-	-	-	-	Yes	Yes	Yes	Yes	Yes	Yes
Multi Monitoring & Control Software Compatible (free)		Yes	Yes	Yes	Yes	Yes	Yes	Yes	Yes	Yes	Yes	Yes	Yes	Yes
Early Warning Software Compatible (ET-SWA100 Series)*		Yes	Yes	Yes	Yes	Yes	Yes	Yes	Yes	Yes	Yes	Yes	Yes	Yes
Video Wall Manager (free)		-	-	-	-	-	-	-	-	-	-	-	-	-
Auto Display Adjustment Upgrade Kit (TY-VUK10)		-	-	-	-	-	-	-	-	-	-	-	-	-

The specification has a case to change without notice.
 1: The part number suffix may differ depending on the license type.

Panasonic Software Line-up

Multi Monitoring & Control Software

This free Panasonic software offers monitoring and control of up to 2,048 projectors and professional displays over a LAN network from a single PC to simplify management and maintenance while supporting stable operation. If you also purchase Early Warning Software (ET-SWA100), it will monitor the status of projectors and displays on the intranet and inform you of errors when it detects signs of trouble. This contributes to a lighter maintenance load and reduces costs.



Early Warning Function (ET-SWA100)

- Maintenance Scheduling Suggestion
- Video Stop Detection Using a Network Camera

Early Warning function License

* If you install "Multi Monitoring Control Software", a free 90 day trial.

For more information, please visit the PASS:

<https://panasonic.net/cns/prodisplays/pass>

If you install 'Multi Monitoring & Control Software,' a free 90-day trial is automatically available.



Captured image when an abnormality happens is stored

For information that is not included on this page, please visit the following website:
<https://panasonic.net/cns/prodisplays/index.html>

Optional Accessories

		Entry						Video Wall			
		TH-98CQE2W	TH-86CQE2W	TH-75CQE2W	TH-65CQE2W	TH-55CQE2W	TH-50CQE2W	TH-43CQE2W	TH-55VF2HW	TH-55VF2W	TH-55LFV9W
Screen Size (inch)		98	86	75	65	55	50	43	55	55	55
FUNCTION BOARD											
12G-SDI Terminal Board	TY-SB01QS	-	-	-	-	-	-	-	-	-	-
3G-SDI Terminal Board	TY-SB01SS	-	-	-	-	-	-	-	-	-	-
Wireless Presentation System Receiver Board	TY-SB01WP	-	-	-	-	-	-	-	-	-	-
DIGITAL LINK Board	TY-SB01DL	-	-	-	-	-	-	-	-	-	-
MOUNTING OPTIONS											
Pedestal	TY-ST75PE9	-	-	-	-	-	-	-	-	-	-
	TY-ST55PE9	-	-	-	-	-	-	-	-	-	-
	TY-ST43PE9	-	-	-	-	-	-	-	-	-	-
	TY-ST43PE8	-	-	-	-	-	-	-	-	-	-
	TY-ST32PE2	-	-	-	-	-	-	-	-	-	-
Wall-hanging Bracket	TY-WK98PV1	-	-	-	-	-	-	-	-	-	-
Installation Mount (Landscape setting only)	TY-VK55LV2	-	-	-	-	-	-	-	Yes	Yes	Yes
Pitch for Wall Hanging (VESA compliant models)	800 x 500 (M8)	-	-	-	-	-	-	-	-	-	-
	800 x 400 (M8)	Yes	-	-	-	-	-	-	-	-	-
	600 x 500 (M8)	-	-	-	-	-	-	-	-	-	-
	600 x 400 (M8)	-	Yes	Yes	-	-	-	-	-	-	-
	600 x 400 (M6)	-	-	-	Yes	-	-	-	-	-	-
	400 x 400 (M8)	-	-	-	-	-	-	-	-	-	-
	400 x 400 (M6)	-	-	-	-	Yes	-	-	Yes	Yes	Yes
	400 x 200 (M6)	-	-	-	-	-	Yes	-	-	-	-
	200 x 200 (M6)	-	-	-	-	-	-	Yes	-	-	-
	100 x 100 (M4)	-	-	-	-	-	-	-	-	-	-
OTHERS											
DIGITAL LINK Switcher	ET-YFB200G	-	-	-	-	-	-	-	-	-	-
Digital Interface Box	ET-YFB100G	-	-	-	-	-	-	-	-	-	-
SOFTWARE											
Content Management Software (free)		-	-	-	-	-	-	-	Yes	Yes	Yes
Screen Transfer (free)		-	-	-	-	-	-	-	-	-	-
Multi Monitoring & Control Software Compatible (free)		Yes	Yes	Yes	Yes	Yes	Yes	Yes	Yes	Yes	Yes
Early Warning Software Compatible (ET-SWA100 Series) ⁴		Yes	Yes	Yes	Yes	Yes	Yes	Yes	Yes	Yes	Yes
Video Wall Manager (free)		-	-	-	-	-	-	-	Yes	Yes	Yes
Auto Display Adjustment Upgrade Kit (TY-VUK10)		-	-	-	-	-	-	-	Yes	Yes	Yes

The specification has a case to change without notice.

1: The availability varies depending on the country. 2: The part number suffix may differ depending on the license type.

3: The Software Main Version 2.10 or later is required.

Panasonic Software Line-up

Screen Transfer

Screen Transfer is a software that allows a computer screen to be displayed onto one or more displays of devices that are connected by wired LAN. See the User's Manual for the operating method.

Main conditions when using Screen Transfer software

As verification is required in advance, please confirm the following conditions and contact your sales representative with regard to details.

1. Delivering to displays within the same network.
2. Using a wired LAN connection between the PC and display instead of a wireless LAN connection.
3. Meeting the operating environment of the PC (check the website for details.)

Even if your displays supports 4K images, the delivered image resolution will be up to 1920 x 1080 pixels.



Version	Ver. 2.0	Ver. 1.0
Number of device connections	Max. 64 units	Max. 8 units
Bandwidth	Approx. 10 Mbps (regardless of the number of connected devices)	Approx. 80 Mbps (when 8 devices are connected)
Auto reconnection	Yes	-
Delivery status check	Yes	-

Compatible Display: SQ1H Series, SQ2H Series, BQ1 Series, EQ2 Series
https://panasonic.net/cns/prodisplays/download/software/scr_transfer/

* The number of connections and functions may vary depending on the model. Please refer to the web for details.

Features

		High Brightness		Standard				Standard		
		TH-86SQ1HW	TH-75SQ1HW	TH-98SQ2HW	TH-86SQ2HW	TH-75SQ2HW	TH-65SQ2HW	TH-55SQ2HW	TH-50SQ2HW	TH-43SQ2HW
Size (inch)		86	75	98	86	75	65	55	50	43
SPECIFICATIONS	DIGITAL LINK	Yes ¹	Yes ¹	Yes	Yes	Yes	Yes	Yes	Yes	Yes
	SLOT	Intel® SDM Standard		Intel® SDM Standard				Intel® SDM Standard		
	Operating Time (h/day)	24	24	24	24	24	24	24	24	24
	Protective Glass	-	-	-	-	-	-	-	-	-
	Touch Operation	-	-	-	-	-	-	-	-	-
	Wireless Function	-	-	Yes	Yes	Yes	Yes	Yes	Yes	Yes
IMAGE QUALITY	Color Management	12-axis		12-axis				12-axis		
	Color Enhancement	Yes	Yes	Yes	Yes	Yes	Yes	Yes	Yes	Yes
	Dynamic Backlight	Yes	Yes	Yes	Yes	Yes	Yes	Yes	Yes	Yes
	Dynamic Contrast	Yes	Yes	-	-	-	-	-	-	-
	Frame Creation	Yes	-	-	-	-	-	-	-	-
	Gradation Smoother	Yes	Yes	Yes	Yes	Yes	Yes	Yes	Yes	Yes
	Local Dimming	Yes	Yes	-	-	-	-	-	-	-
Refine Enhancer	Yes	Yes	Yes	Yes	Yes	Yes	Yes	Yes	Yes	
RELIABILITY	Failover/Failback	Yes	Yes	Yes	Yes	Yes	Yes	Yes	Yes	Yes
	Input Search/No Signal Auto Switch Setting/Input Signal Search	Yes	Yes	Yes	Yes	Yes	Yes	Yes	Yes	Yes
EXPANDABILITY	Audio Input Select (Switching)	Yes	Yes	-	-	-	-	-	-	-
	Cisco Webex Certified	-	-	-	-	-	-	-	-	-
	LAN Control (Network Control)	Yes	Yes	Yes	Yes	Yes	Yes	Yes	Yes	Yes
	Memory Viewer/Auto Play	Yes	Yes	Yes	Yes	Yes	Yes	Yes	Yes	Yes
	PJLink™ Protocol	Yes	Yes	Yes	Yes	Yes	Yes	Yes	Yes	Yes
	Power Management Mode/Eco Mode	Yes	Yes	Yes	Yes	Yes	Yes	Yes	Yes	Yes
	Remote ID Control (Function)	Yes	Yes	Yes	Yes	Yes	Yes	Yes	Yes	Yes
	Serial ID Control (Function)	Yes	Yes	-	-	-	-	-	-	-
	USB Media Player	Yes	Yes	Yes	Yes	Yes	Yes	Yes	Yes	Yes
	Web Browser Control	Yes	Yes	Yes	Yes	Yes	Yes	Yes	Yes	Yes
CONVENIENCE	Auto Setup	Yes	Yes	-	-	-	-	-	-	-
	Built-in Whiteboard	-	-	-	-	-	-	-	-	-
	Conference Audio Mode	Yes	Yes	-	-	-	-	-	-	-
	Data Cloning	USB/LAN		USB/LAN				USB/LAN		
	HDMI CEC	Yes	Yes	Yes	Yes	Yes	Yes	Yes	Yes	Yes
	Multi Input Display ⁷	Yes	Yes	Yes	Yes	Yes	Yes	Yes	Yes	Yes
	No Activity Power Off	Yes	Yes	Yes	Yes	Yes	Yes	Yes	Yes	Yes
	Off Timer Setting	Yes	Yes	Yes	Yes	Yes	Yes	Yes	Yes	Yes
	Power on Screen Delay	Yes	Yes	Yes	Yes	Yes	Yes	Yes	Yes	Yes
Set up Timer	Yes	Yes	Yes	Yes	Yes	Yes	Yes	Yes	Yes	
Startup Image Settings/No signal image settings	Yes	Yes	Yes	Yes	Yes	Yes	Yes	Yes	Yes	
INSTALLATION	Daisy Chain Connection	Yes	Yes	-	-	-	-	-	-	-
	Fan-less Design	-	-	Yes	Yes	Yes	Yes	Yes	Yes	Yes
	Multi Screen (Multi Display Setting) ⁸	Yes	Yes	Yes	Yes	Yes	Yes	Yes	Yes	Yes
	Portrait	Yes	Yes	Yes	Yes	Yes	Yes	Yes	Yes	Yes
	Portrait Zoom Mode	Yes	Yes	Yes	Yes	Yes	Yes	Yes	Yes	Yes
	USB Memory Network Setting	Yes	Yes	-	-	-	-	-	-	-
CONTROL	Crestron Connected™	Yes	Yes	Yes	Yes	Yes	Yes	Yes	Yes	Yes
	AMX.D.D.	Yes	Yes	Yes	Yes	Yes	Yes	Yes	Yes	Yes
	Extron XTP	Yes	Yes	Yes	Yes	Yes	Yes	Yes	Yes	Yes

1: Long Reach Mode compatible. 2: Multi Dynamic Backlight 3: Local Dimming on LfV9 Series is always set.
 4: This function is compatible with the Software Main Version 2.2000 or later. Please contact your sales representative with regard to details.
 5: The playable application format, GUI, and operation procedure for the SQE1, CQE1 Series' Media Player function areas different from of other models.
 6: This function on the 98/86-inch models is compatible with the Software Main Version 4.0000 or later.
 7: The number of units that can be set as a group varies depending on the model. For details, see the operating instructions of each model
 8: There are restrictions on the input signal and 4-Input Multi Display function. 3G-SDI input and 4K images are not supported by the 4-Input Multi Display function. For details, see the operating instructions of each model.
 9: These functions on the 98/86-inch models are compatible with the Software Main Version 3.0000 or later. Please contact your sales representative with regard to details.

Note: The specifications may vary depending on the model, even for the same function. For details, see the operating instructions of each model.

Features

		Standard						Standard						
		TH-98SQE2W	TH-86SQE2W	TH-75SQE2W	TH-65SQE2W	TH-55SQE2W	TH-50SQE2W	TH-43SQE2W	TH-86EQ2W	TH-75EQ2W	TH-65EQ2W	TH-55EQ2W	TH-50EQ2W	TH-43EQ2W
Size (inch)		98	86	75	65	55	50	43	86	75	65	55	50	43
SPECIFICATIONS	DIGITAL LINK SLOT	-	-	Intel® SDM Standard				Intel® SDM Standard	-	-	Intel® SDM Standard			
	Operating Time (h/day)	24	24	24	24	24	24	24	18	18	18	18	18	18
	Protective Glass	-	-	-	-	-	-	-	-	-	-	-	-	-
	Touch Operation	-	-	-	-	-	-	-	-	-	-	-	-	-
	Wireless Function	Yes	Yes	Yes	Yes	Yes	Yes	Yes	-	-	-	-	-	-
IMAGE QUALITY	Color Management	-	-	-	-	-	-	-	6-axis					
	Color Enhancement	-	-	-	-	-	-	-	Yes	Yes	Yes	Yes	Yes	Yes
	Dynamic Backlight	Yes	Yes	Yes	Yes	Yes	Yes	Yes	Yes	Yes	Yes	Yes	Yes	Yes
	Dynamic Contrast	Yes	Yes	Yes	Yes	Yes	Yes	Yes	Yes	Yes	Yes	Yes	Yes	Yes
	Frame Creation	-	-	-	-	-	-	-	-	-	-	-	-	-
	Gradation Smoother	-	-	-	-	-	-	-	Yes	Yes	Yes	Yes	Yes	Yes
	Local Dimming	Yes	-	-	-	-	-	-	Yes	Yes	-	-	-	-
Refine Enhancer	-	-	-	-	-	-	-	Yes	Yes	Yes	Yes	Yes	Yes	
RELIABILITY	Failover/Failback	-	-	-	-	-	-	-	Yes	Yes	Yes	Yes	Yes	Yes
	Input Search/No Signal Auto Switch Setting/Input Signal Search	Yes	Yes	Yes	Yes	Yes	Yes	Yes	Yes	Yes	Yes	Yes	Yes	Yes
EXPANDABILITY	Audio Input Select (Switching)	-	-	-	-	-	-	-	Yes	Yes	Yes	Yes	Yes	Yes
	Cisco Webex Certified	-	-	-	-	-	-	-	-	-	-	-	-	-
	LAN Control (Network Control)	Yes	Yes	Yes	Yes	Yes	Yes	Yes	Yes	Yes	Yes	Yes	Yes	Yes
	Memory Viewer/Auto Play	Yes ⁴	Yes ⁴	Yes ⁴	Yes ⁴	Yes ⁴	Yes ⁴	Yes ⁴	Yes	Yes	Yes	Yes	Yes	Yes
	PJLink™ Protocol	Yes	Yes	Yes	Yes	Yes	Yes	Yes	Yes	Yes	Yes	Yes	Yes	Yes
	Power Management Mode/Eco Mode	Yes	Yes	Yes	Yes	Yes	Yes	Yes	Yes	Yes	Yes	Yes	Yes	Yes
	Remote ID Control (Function)	-	-	-	-	-	-	-	Yes	Yes	Yes	Yes	Yes	Yes
	Serial ID Control (Function)	Yes	Yes	Yes	Yes	Yes	Yes	Yes	Yes	Yes	Yes	Yes	Yes	Yes
	USB Media Player	Yes	Yes	Yes	Yes	Yes	Yes	Yes	Yes	Yes	Yes	Yes	Yes	Yes
	Web Browser Control	-	-	-	-	-	-	-	Yes	Yes	Yes	Yes	Yes	Yes
CONVENIENCE	Auto Setup	Yes	Yes	Yes	Yes	Yes	Yes	Yes	Yes	Yes	Yes	Yes	Yes	Yes
	Built-in Whiteboard	-	-	-	-	-	-	-	-	-	-	-	-	-
	Conference Audio Mode	-	-	-	-	-	-	-	Yes	Yes	Yes	Yes	Yes	Yes
	Data Cloning	USB						USB	USB/LAN					
	HDMI CEC	Yes	Yes	Yes	Yes	Yes	Yes	Yes	Yes	Yes	Yes	Yes	Yes	Yes
	Multi Input Display ⁷	-	-	-	-	-	-	-	-	-	-	-	-	-
	No Activity Power Off	Yes	Yes	Yes	Yes	Yes	Yes	Yes	Yes	Yes	Yes	Yes	Yes	Yes
	Off Timer Setting	-	-	-	-	-	-	-	Yes	Yes	Yes	Yes	Yes	Yes
	Power on Screen Delay	TBD	TBD	TBD	TBD	TBD	TBD	TBD	Yes	Yes	Yes	Yes	Yes	Yes
	Set up Timer	Yes	Yes	Yes	Yes	Yes	Yes	Yes	Yes	Yes	Yes	Yes	Yes	Yes
Startup Image Settings/No signal image settings	-	-	-	-	-	-	-	Yes	Yes	Yes	Yes	Yes	Yes	
INSTALLATION	Daisy Chain Connection	-	-	-	-	-	-	-	Yes (IR only)					
	Fan-less Design	Yes	Yes	Yes	Yes	Yes	Yes	Yes	Yes	Yes	Yes	Yes	Yes	Yes
	Multi Screen (Multi Display Setting) ⁸	Yes	Yes	Yes	Yes	Yes	Yes	Yes	Yes	Yes	Yes	Yes	Yes	Yes
	Portrait	Yes	Yes	Yes	Yes	Yes	Yes	Yes	Yes	Yes	Yes	Yes	Yes	Yes
	Portrait Zoom Mode	-	-	-	-	-	-	-	Yes	Yes	Yes	Yes	Yes	Yes
CONTROL	USB Memory Network Setting	-	-	-	-	-	-	-	Yes	Yes	Yes	Yes	Yes	Yes
	Creston Connected™	-	-	-	-	-	-	-	Yes	Yes	Yes	Yes	Yes	Yes
	AMX.D.D.	-	-	-	-	-	-	-	Yes	Yes	Yes	Yes	Yes	Yes
Extron XTP	-	-	-	-	-	-	-	-	-	-	-	-	-	

1: Long Reach Mode compatible. 2: Multi Dynamic Backlight 3: Local Dimming on LFV9 Series is always set.
 4: These functions on the 98/86-inch models are compatible with the Software Main Version 4.0000 or later.
 5: The playable application format, GUI, and operation procedure for the SQE1 Series' Media Player function areas different from of other models.
 6: Some files cannot be played back even if they are in the supported format. Regarding restrictions, see the operating instructions.
 7: The number of units that can be set as a group varies depending on the model. For details, see the operating instructions of each model
 8: There are restrictions on the input signal and 4-Input Multi Display function. 3G-SDI input and 4K images are not supported by the 4-Input Multi Display function.
 For details, see the operating instructions of each model.
 9: The number of units that can be set as a group varies depending on the model. For details, see the operating instructions of each model

Note: The specifications may vary depending on the model, even for the same function.
 For details, see the operating instructions of each model.

Features

		Entry						Video Wall			
		TH-98CQE2W	TH-86CQE2W	TH-75CQE2W	TH-65CQE2W	TH-55CQE2W	TH-50CQE2W	TH-43CQE2W	TH-55VF2HW	TH-55VF2W	TH-55LFV9W
Size (inch)		98	86	75	65	55	50	43	55	55	55
SPECIFICATIONS	DIGITAL LINK	-	-	-	-	-	-	-	Yes	Yes	-
	SLOT	-	-	-	-	-	-	-	-	-	-
	Operating Time (h/day)	24	16	16	16	16	16	16	24	24	24
	Protective Glass	-	-	-	-	-	-	-	-	-	-
	Touch Operation	-	-	-	-	-	-	-	-	-	-
	Wireless Function	Yes	Yes	Yes	Yes	Yes	Yes	Yes	-	-	-
IMAGE QUALITY	Color Management	-	-	-	-	-	-	-	-	-	-
	Color Enhancement	-	-	-	-	-	-	-	Yes	Yes	Yes
	Dynamic Backlight	-	-	-	-	-	-	-	Yes ²	Yes ²	-
	Dynamic Contrast	-	-	-	-	-	-	-	Yes	Yes	Yes
	Frame Creation	-	-	-	-	-	-	-	-	-	-
	Gradation Smoother	-	-	-	-	-	-	-	-	-	-
	Local Dimming	-	-	-	-	-	-	-	Yes	Yes	Yes ³
Refine Enhancer	-	-	-	-	-	-	-	Yes	Yes	-	
RELIABILITY	Failover/Failback	-	-	-	-	-	-	-	Yes	Yes	Yes
	Input Search/No Signal Auto Switch Setting/Input Signal Search	-	-	-	-	-	-	-	Yes	Yes	Yes
EXPANDABILITY	Audio Input Select (Switching)	-	-	-	-	-	-	-	Yes	Yes	-
	Cisco Webex Certified	-	-	-	-	-	-	-	-	-	-
	LAN Control (Network Control)	Yes	Yes	Yes	Yes	Yes	Yes	Yes	Yes	Yes	Yes
	Memory Viewer/Auto Play	Yes	Yes	Yes	Yes	Yes	Yes	Yes	-	-	-
	PJLink™ Protocol	Yes	Yes	Yes	Yes	Yes	Yes	Yes	Yes	Yes	Yes
	Power Management Mode/Eco Mode	-	-	-	-	-	-	-	Yes	Yes	Yes
	Remote ID Control (Function)	-	-	-	-	-	-	-	Yes	Yes	-
	Serial ID Control (Function)	-	-	-	-	-	-	-	Yes	Yes	Yes
	USB Media Player	Yes	Yes	Yes	Yes	Yes	Yes	Yes	Yes	Yes	-
Web Browser Control	-	-	-	-	-	-	-	Yes	Yes	Yes	
CONVENIENCE	Auto Setup	-	-	-	-	-	-	-	Yes	Yes	-
	Built-in Whiteboard	-	-	-	-	-	-	-	-	-	-
	Conference Audio Mode	-	-	-	-	-	-	-	-	-	-
	Data Cloning	-	-	-	-	-	-	-	USB/LAN	USB/LAN	-
	HDMI CEC	-	-	-	-	-	-	-	-	-	-
	Multi Input Display ⁷	-	-	-	-	-	-	-	-	-	-
	No Activity Power Off	-	-	-	-	-	-	-	Yes	Yes	-
	Off Timer Setting	-	-	-	-	-	-	-	Yes	Yes	Yes
	Power on Screen Delay	-	-	-	-	-	-	-	Yes	Yes	Yes
	Set up Timer	-	-	-	-	-	-	-	Yes	Yes	-
Startup Image Settings/No signal image settings	-	-	-	-	-	-	-	Yes	Yes	-	
INSTALLATION	Daisy Chain Connection	-	-	-	-	-	-	-	Yes	Yes	Yes
	Fan-less Design	-	-	-	-	-	-	-	Yes	Yes	-
	Multi Screen (Multi Display Setting) ⁸	-	-	-	-	-	-	-	Yes	Yes	Yes
	Portrait	Yes	Yes	Yes	Yes	Yes	Yes	Yes	Yes	Yes	Yes
	Portrait Zoom Mode	-	-	-	-	-	-	-	-	-	-
	USB Memory Network Setting	-	-	-	-	-	-	-	Yes	Yes	-
CONTROL	Crestron Connected™	-	-	-	-	-	-	-	Yes	Yes	-
	AMX.D.D.	-	-	-	-	-	-	-	Yes	Yes	-
	Extron XTP	-	-	-	-	-	-	-	Yes	Yes	-

1: Long Reach Mode compatible. 2: Multi Dynamic Backlight 3: Local Dimming on LFV9 Series is always set.
 4: This function is compatible with the Software Main Version 2.2000 or later. Please contact your sales representative with regard to details.
 5: The playable application format, GUI, and operation procedure for the SQE1, CQE1 Series' Media Player function areas different from of other models.
 6: This function on the 98/86-inch models is compatible with the Software Main Version 4.0000 or later.
 7: The number of units that can be set as a group varies depending on the model. For details, see the operating instructions of each model
 8: There are restrictions on the input signal and 4-Input Multi Display function. 3G-SDI input and 4K images are not supported by the 4-Input Multi Display function. For details, see the operating instructions of each model.
 9: These functions on the 98/86-inch models are compatible with the Software Main Version 3.0000 or later. Please contact your sales representative with regard to details.

Note: The specifications may vary depending on the model, even for the same function.
 For details, see the operating instructions of each model.

Panasonic **CONNECT**

Panasonic Connect Europe GmbH
Hagenauer Strasse 43
65203 Wiesbaden
<https://eu.connect.panasonic.com/displays>