

# PRECISION WORKSTATIONS

The #1 workstation  
brand in the world<sup>1</sup>



## TABLE OF CONTENTS

Powering your Passion	2
Why Choose Precision	3-5
Dell Optimizer for Precision	6
Industry Use Cases, Meet the Specialist	7-8
Precision Line-up	9-17
Sustainability	18



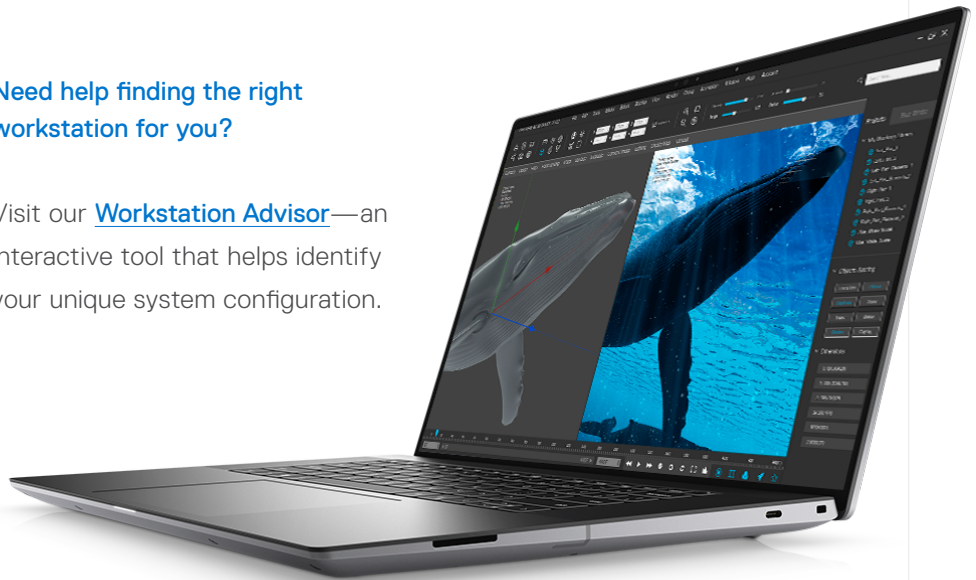
## Power your passion with Precision

For over 25 years, Dell Precision has delivered versatile designs, top performance, and reliability to enable you to conquer your most demanding applications. From award-winning filmmakers and animators to state-of-the-art architects and engineers, to data scientists and VR developers, our expansive portfolio enables you to customize a workstation that powers your passion, purpose and creative expertise.

Learn more at [Dell.com/Precision](https://Dell.com/Precision).

### Need help finding the right workstation for you?

Visit our [Workstation Advisor](#)—an interactive tool that helps identify your unique system configuration.



## Why choose Dell Precision Workstations?

Every Dell Precision is engineered with features you need to bring your biggest ideas to life.



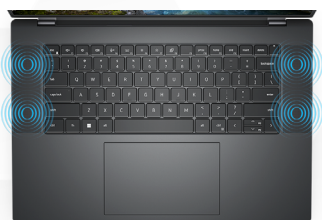
### Innovative design

Experience unrestrained innovation with the new thin, light and premium-designed mobile workstations. These devices can feature InfinityEdge, UHD+, HDR, and Touch display options, plus advanced thermal technologies that allow you to keep your system running at high speeds for longer. Unique designs in multiple form factors deliver ultimate scalability, including rack workstations, small form factors, and tower workstations. Additionally, select towers have FlexBays for easy part replacements, as well as multi-channel advanced cooling for outstanding acoustics and thermal performance.

### Intelligent performance

Your extraordinary ideas deserve the exceptional power of the number one workstations in the world<sup>1</sup>. Dell Precision delivers maximum performance with professional processors and graphics, as well as massive memory and expansive storage options. Plus, Dell Optimizer for Precision is the only AI-based performance software in the industry that automatically tunes your workstation using machine learning - further delivering optimal performance.

### Key design technologies



### Key performance technologies





## Why choose Dell Precision Workstations?

Every Dell Precision is engineered with features you need to bring your biggest ideas to life.

### Outstanding reliability

Dell invests thousands of hours with Independent Software Vendors (ISV) to rigorously test our Dell Precision workstations so we can deliver a fully optimized workstation to you. These software partners team with us and our customers to ensure the best user experience possible. Learn more about ISV Certifications at [PrecisionWorkstations.com](https://www.dell.com/precisionworkstations).

Dell exclusive, BIOS-based, Reliable Memory Technology Pro augments Error Corrective Code (ECC) memory, which automatically fixes single-bit memory errors. RMT Pro identifies and maps out bad memory sectors on the



DIMM so they aren't accessed again following a reboot, which helps avoid memory errors and blue screens. The software also warns the user when DIMMs are at a critical point to failure and should be replaced.

Our mobile systems are MIL-SPEC tested to ensure they are robust and can handle typical wear and tear that comes with traveling. Also, Dell ProSupport Plus is the most complete service and support offering in the industry, so you can have both quality products and the ultimate services to go along with them.

### Key technologies





## Security

We know security is important to you, and Dell Precision workstations feature key security features across the portfolio, whether in the office, on the road, or somewhere in between.

### Key technologies on select systems



## Driving Emerging Technologies

Dell Precision workstations are the foundation of virtual and augmented reality content creation and advanced commercial visualization. Our broad Ready for VR portfolio combined with the Dell Technology Partner Program are bringing futuristic efficiency and innovation to every office.

Dell Precision workstations also deliver the power to deploy and manage cognitive technology platforms, including Machine Learning, Deep Learning, and Artificial Intelligence, to help businesses solve complex problems and gain actionable insights from their data.



Dell Optimizer is our AI-based optimization software that learns and responds to the way you work, designed to automatically improve application and device performance, PC and accessory battery run-time, audio/video settings and privacy – all in the background while you're working.



### Boost productivity up to 28% on routine tasks<sup>1</sup>

**Application Optimization** analyzes how you use your preferred apps to increase performance, helping you handle demanding tasks efficiently.



### Enhanced audio

Get to work faster and keep your sensitive data private with our **Presence Detection** technology- which wakes your PC when you approach and locks it when you walk away.



### Experience 2x faster network performance<sup>1</sup>

**Network Optimization** provides the world's first simultaneous multi-network connection for faster data and video downloads, and joins the best network available.



### Get up to 18% in power savings<sup>2</sup>

Save energy without sacrificing performance for ultimate efficiency with **Power Optimization**.



### Intelligent privacy anywhere

Enjoy easy pairing and management of your Dell monitors and accessories with the **integration of Dell Display Manager and Dell Peripheral Manager**.



### Access personalized insights

Our **Analytics** feature monitors the utilization of your PC by running your system's battery, storage, CPU, and memory behavior to review your system's reliability and problem history.

**With Dell Optimizer, optimization and data collection follow a stringent process to ensure your privacy and security. Read more about our security and privacy details**

[Click here to learn more about Dell Optimizer](#)

Dell Optimizer features vary per PC model and platform. Please refer to the [Availability Matrix](#) for more details.



<sup>1</sup>Based on A Principled Technologies Report that ran PC performance benchmarks on Dell Latitude 9430 laptops and OptiPlex 7400 all-in-one desktop PCs: Improve PC app performance, battery charging, and end-user experiences with Dell Optimizer, June 2023

This is based on a Dell internal study, testing power and performance within our Dell Optimizer power module. These workers primarily focus on general compute activities such as video conference calls, web browsing and general response time of opening and closing applications. White paper published November 2022 <https://www.delltechnologies.com/asset/en-us/solutions/business-solutions/industry-market/maximizing-power-efficiency-with-dell-optimizer-a-case-study.pdf>

Best network selection based on signal strength, channel congestion, router type and others. Network suggestions based on user credentials.

Best network selection based on signal strength, channel congestion, router type and others. Network suggestions based on user credentials.



## Performance vital for variety

From 3D animation to financial analytics, Dell Precision workstations are purpose-built to power industry leaders across a wide variety of professional landscapes. Explore our industries below to find out how you can leverage Precision workstations to support your workflow.



### Media and entertainment

Become an expert at your digital content workflow with a Precision partnered with Adobe, Avid, Autodesk, and many other media ISVs.

[Learn more →](#)



### Manufacturing and engineering

Quickly bring products to market, improve design, and reduce prototypes with Autodesk, Dassault Systems, ANSYS, and other software powered by Precision.

[Learn more →](#)



### Healthcare and life sciences

Maneuver telemedicine, EMR systems, and PACS images through partnerships with GE Healthcare, Barco, Cerner, and Epic.

[Learn more →](#)



### Oil and gas

Complex workflow models and big data analytics are no match for workstation-class power combined with Halliburton, Schlumberger, and IHS Markit support.

[Learn more →](#)



### Government and education

Take designs, data analytics, and creative masterpieces to the next level with Dell Precision.

[Learn more →](#)



### Economics and financial services

Dell Precision workstations power trading floors, financial analysis, and banking through partnerships with financial institutions and ISVs.

[Learn more →](#)

# USER PERSONAS



## Meet the Specialist

At Dell Technologies, we have redefined our commercial end-user personas to address the unique work styles and pain points of the hybrid workforce. We've eliminated the guesswork from choosing the right tools for the job with thoughtfully curated solutions tailored to each end user's needs.

Precision workstations are designed for Specialists—those in specialized and complex fields, performing analyses and detailed work. They need top performance and security options for desk productivity with the ability to work anywhere.

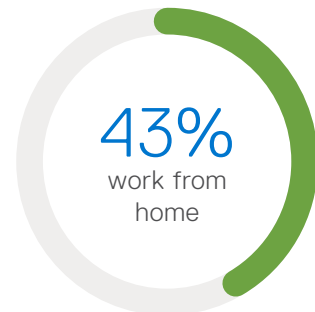
2x  
more performance  
applications used  
(compared to  
other personas)

### Specialists: motivation

- Produce expert level deliverables
- ...
- Get a sense of satisfaction and pride in seeing their projects drive outcomes
- ...
- Are excited by the challenge to solve complex problems and deliver unique solutions

### Specialists: challenges

- Face challenges when setting up devices across different workspaces
- ...
- Need to collaborate and be connected regardless of where they are
- ...
- Work best in a clean and efficient workspace
- ...
- Are regularly managing connectivity and power

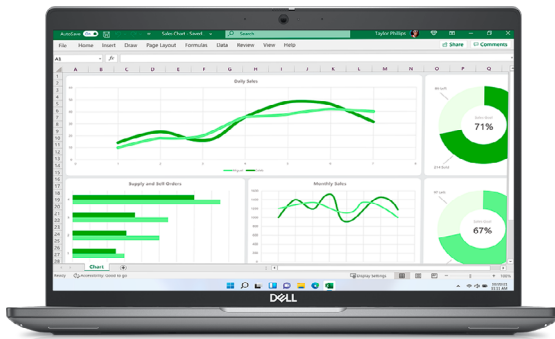




## DELL PRECISION MOBILE WORKSTATION FAMILY

# PRECISION 3000 SERIES MOBILE WORKSTATIONS

Level up your technology to match your skills with affordable workstation performance and reliability in a thin and light package. Essential for design, creative, web design, financial analysis, and Microsoft power-users.



### Precision 3480

Small, thin and powerful. Featuring a 14" entry-level workstation that is great for Power Users, collaboration tools like TEAMS and Zoom, as well as students and professionals running light 2D/entry 3D CAD applications.

### Precision 3580

The 3580 is a thin and light, cost-effective workstation. This entry-level workstation is designed with up to 20% recycled carbon fiber in the LCD coverlid, and 50% recycled copper AC adapter cable, as well as other features that bring sustainability to the forefront while giving 2D CAD and power users a sleek-looking design.



(\*Accessories sold separately.)



### Precision 3581

Our best price for performance workstation<sup>3</sup>. Like the 3580, it provides sustainability features, along with a sleek design. But, the performance of this system takes it a notch up, delivering essential performance to 3D CAD, as well as creative applications.

# PRECISION 5000 SERIES MOBILE WORKSTATIONS

Stay in your creative zone with enhanced performance workstations designed to impress with a combination of style and capability. Perfect for users on-the-go with a light, but robust design, these devices are intended for design, creative, and other mainstream applications.



## Precision 5480

The Dell's most powerful 14" mobile workstation is also our smallest and lightest workstation<sup>4</sup>. It packs a tremendous punch in a small form factor, featuring a 45W processor and professional graphics from Intel and NVIDIA.



## Precision 5680

The all-new, stylish, thin, and light 16" workstation that delivers outstanding performance in a small package. Great for creative personnel with up to UHD+, 16:10 display, PremierColor and grade "A" speakers.





# PRECISION 7000 SERIES MOBILE WORKSTATIONS

Put power behind your purpose with ultra-scalable mobile performance and reliability to power massive data sets, design simulations and analysis, rendering, and even VR and AI initiatives. These devices are perfect for energy, healthcare, engineering, and creative applications.

## Precision 7680

Our most powerful 16" mobile workstation<sup>3</sup> is designed to deliver desktop-like performance in an easy-to-carry workstation. This system is customized with either a thin or performance chassis, based on your performance requirements.



## Precision 7780

Our most powerful mobile workstation<sup>3</sup> is ready for VR and AI. If you're looking to maximize the performance of your applications while taking them on the road or to the home office, this is the right workstation for you. It features a large 17" display, which is great for applications with lots of detail.



## MOBILE WORKSTATION QUICK COMPARE



	3480	3580	3581	5480	5680	7680	7780
<b>13<sup>th</sup> gen Processor (up to)</b>	Intel® Core™ i7, P28W, 14 (6P+8E) cores	Intel® Core™ i7, P28W, 14 (6P+8E) cores	Intel® Core™ i9, H45W, 14 (6P+8E) cores	Intel® Core™ i9, H 45W 14 (6P+8E) cores	Intel® Core™ i9, 14 (6P+8E) cores	Intel® Core™ i9, HX 55W, 24 Core (8P + 16E) cores	Intel® Core™ i9, HX 55W, 24 Core (8P + 16E) cores
<b>Graphic card (up to)</b>	NVIDIA RTX™ A500 (4GB)	NVIDIA RTX™ A500 (4GB)	NVIDIA RTX™ 2000 Ada (8GB)	NVIDIA RTX™ 3000 Ada graphics (8GB)	NVIDIA RTX™ 5000 Ada (16GB)	NVIDIA RTX™ 5000 Ada (16GB)	NVIDIA RTX™ 5000 Ada (16GB)
<b>Memory (up to)</b>	64GB, DDR5 4800MT/s, non-ECC	64GB, DDR5 4800MT/s, non-ECC	64GB, DDR5 4800MT/s, non-ECC	64GB DDR5 6000MT/s, non-ECC	64GB, DDR5 6000MT/s, non-ECC	128GB (CAMM), 64GB (SODIMM), 5600MT/s, optional ECC non-ECC	128GB (CAMM), 64GB (SODIMM), 5600MT/s, optional ECC non-ECC
<b>Storage (up to)</b>	2TB	3TB	4TB	4TB	8TB	<b>Thin:</b> 8TB <b>Performance:</b> 12TB	16TB
<b>Display (up to)</b>	14" FHD, PremierColor. Touch and ComfortView Plus options	15.6" FHD, PremierColor, optional Touch and ComfortView Plus	15.6" FHD, PremierColor, optional Touch and ComfortView Plus	14" InfinityEdge 16:10 display QHD+, PremierColor with Touch, Pen and ComfortView Plus	16", 3-sided InfinityEdge 16:10 display UHD+OLED with Touch, PremierColor ComfortView Plus	16", 16:10 OLED display with HDR500, PremierColor, Touch and ComfortView Plus options	17.3", 16:9 display with HDR400, PremierColor, ComfortView Plus options
<b>Width</b>	12.65" / 321.35 mm	14.09" / 357.80 mm	14.09" / 357.80 mm	12.22" / 310.60 mm	14.04" / 356.61 mm	14.2" / 356 mm	15.67" / 398 mm
<b>Depth</b>	8.35" / 212 mm	9.19" / 233.30 mm	9.19" / 233.30 mm	8.27" / 210.35 mm	9.46" / 240.33 mm	10.18" / 258 mm	10.44" / 265 mm
<b>Height</b>	0.75"/19.06 mm (front), 0.83"/21.04 mm (rear)	0.82"/20.80 mm (front), 0.90"/22.80 mm (rear)	0.89"/22.70 mm (front), 0.97"/24.70 mm (rear)	.29"/7.49mm (front), .43"/11.09mm (rear)	.78"/20.05 mm (front), .87"/22.17 mm (rear)	<b>Thin:</b> 0.88"/22.30 mm (front), 0.92"/23.20 mm (rear) <b>Performance:</b> 0.99"/25.05 mm (front), 1.03 in./25.95 mm (rear)	1.03"/25.95 mm (front), 1.06"/26.70 mm (rear)
<b>Starting weight</b>	3.06 lbs / 1.39kg	3.56 lbs / 1.63 kg	3.96 lbs / 1.795 kg	3.26 lbs / 1.48kg	4.49 lbs / 1.99 kg	<b>Thin:</b> 5.75lb/ 2.6kg <b>Performance:</b> 5.90 lbs/ 2.67 kg	6.73 lbs / 3.05 kg

[www.dell.com/precision](http://www.dell.com/precision)



# 3000 SERIES DESKTOPS, TOWER AND RACK

Take your ideas to new places with a workstation that matches your skills but doesn't break the bank. Available in compact, small form factor, and a tower design, they are great for space-constrained workspaces, as well as some Edge use cases. These workstations are optimal for financial, design, creative applications, and many more.

## Precision 3260 Compact

The 3260 Compact is an ultra-small form factor workstation designed for tight workspaces and edge computing. This small but powerful system is capable of pushing up to (7) 4K displays (also 8K support) and is VR Ready. Multiple mounting options plus dust and wire covers provide the flexibility to place this device almost anywhere.



## Precision 3460 SFF

Incredible performance and reliability are packed into a small form factor workstation, making it great for space-constrained workspaces and the Edge. Several desk mounting options, as well as rack mounting, helps keep your workspace clutter-free.

DELL PRECISION FIXED WORKSTATION FAMILY

## 3000 SERIES DESKTOPS, TOWER AND RACK



### Precision 3660 Tower

Exceptional scalability in a tower design, with performance capable of pushing VR and AI workloads. The 3660 Tower has an extremely breathable chassis and offers Liquid Cooling to run heavy workloads with minimal noise. The 3660 also introduces front-accessible bays providing convenient and secure removable storage options.





## DELL PRECISION FIXED WORKSTATION FAMILY

# 5000 SERIES TOWER

Keep pace with your stream of thought with a mid-stream tower designed to deliver amazing performance for power-hungry applications. VR, AI-ready, and Data Science versions available.

### Precision 5860 Tower

Experience big power in an innovative tower design with powerful processors. The 5860 Tower is ideal for professional users working with graphics and data-intensive design applications that require higher core counts and high-end graphics support in a single socket architecture. The tool-less chassis with FlexBay design supports a range of modules including scalable storage. Plus, stay cool under pressure with the revolutionary multichannel thermal design.



# 7000 SERIES TOWER AND RACK

Maximize your productivity with our most scalable workstations available. Featuring full tower designs, as well as a 2U rack workstation, these devices are great for almost any data or graphic-intensive application.



## Precision 7875 Tower

Power your productivity with the amazing 7875 Tower, which is ideal for engineers, designers, analysts, and data scientists whose application mix includes multi-threaded, computer-intensive analysis, simulation, and rendering applications requiring high CPU core counts. Features the AMD Ryzen Threadripper™ PRO (280W) processor, with between 12-96 Cores; up to two NVIDIA or AMD Pro 300W graphics and 56TB of RAID capable storage.



## Precision 7960 Tower

Our most powerful and scalable tower workstation<sup>3</sup>. The 7960 Tower is great for customers who are running complex application environments including interactive design, analysis, data science, and exploration of very large data sets, as well as emerging applications/workloads like artificial intelligence and xReality. A versatile split chassis design features tool-less front access FlexBays and delivers maximum storage expandability.



## Precision 7960 Rack

Experience the highest level of secure remote access and ultimate workstation performance in a 2U rack industrial design. Plus, the Integrated Dell Remote Access Controller (iDRAC) allows you to deploy, update, monitor, and maintain remote workstations with ease. Collaborate across your organization, while keeping your IP in the data center.





### Precision 3260 Compact

### Precision 3460 SFF

### Precision 3660 Tower

Workstation-class performance packed into our smallest workstation

Performance & affordability in a small form factor

Powerful and affordable tower

- Compact, Ultra Small Form Factor
- Up to Intel® Core™ i9 processor, 24 (8P+16E) Cores
- Up to 95W NVIDIA RTX A3000 graphics (6GB)
- Up to 9TB storage, RAID 0/1
- Up to 64GB 4800MHz ECC or NECC DDR5 memory

- Small Form Factor
- Up to Intel® Core™ i9 processor, 24 (8P+16E) cores
- Up to 75W AMD or NVIDIA graphics
- Up to 20TB storage, RAID 0/1
- Up to 64GB or up to 4800MHz ECC or NECC DDR5 memory

- Tower
- Up to Intel® Core™ i9 processors, 24 (8P+16E) cores
- Up to 450W AMD or NVIDIA graphics
- Up to 28TB of storage, RAID 0/1/5/10
- Up to 128GB or up to 4400MHz ECC or NECC DDR5 memory



### Precision 5860 Tower

### Precision 7875 Tower

### Precision 7960 Tower

### Precision 7960 Rack

Mid-tower with exceptional scalability

Mid-tower with full tower scalability

Powerful, made for ultimate scalability.

Ultimate performance and security in a 2U form factor.

- Midtower
- Intel® Xeon® (225W) processors, up to 24 cores
- Up to (2) 225W AMD or NVIDIA graphics
- Up to 56TB storage, RAID 0/1/5/10
- Up to 2TB 4800MHz DDR5 ECC memory

- Midtower
- AMD Ryzen Threadripper™ Pro processors, up to 96 cores
- Up to (2) 300W AMD or NVIDIA graphics, or (1) 500W
- Up to 56TB storage, RAID 0/1/5/10
- Up to 2TB 4800MHz DDR5 memory

- Full Tower
- Intel® Xeon® (350W) processor, up to 56 cores
- Up to (4) 300W AMD or NVIDIA graphics
- Up to 152TB storage, RAID 0/1/5/10
- Up to 4TB 4800MHz DDR5 ECC memory

- 2U Rack
- Up to (2) Intel® Xeon® (350W) processors, up to 56 cores each
- Up to (2) 300W AMD or NVIDIA graphics
- Up to 128TB storage, RAID 0/1/5/10
- Up to 8TB 4800MHz DDR5 ECC memory

<sup>2</sup> Based on Dell analysis, Jan 2021. 21% bioplastics in LCD coverlid.

SUSTAINABILITY ON

# DELL PRECISION WORKSTATIONS

Dell Precision fixed and mobile workstations are designed with the environment in mind, using sustainable materials in our products and packaging wherever possible.



## Up to 5 types

Of recycled or renewable materials used in the components of select Precision mobile workstations.

## 1st

Precision 5680 is the first Precision Mobile workstation to use low carbon emissions and recycled aluminum<sup>2</sup> in its chassis.

## 100%

New Precision mobile workstations ship in packaging made from 100% recycled or renewable materials and is 100% recyclable<sup>3</sup>.

## Ecolabels

30+

EPEAT Gold registered products



8.0

ENERGY STAR 8.0 throughout



Data as of February 2023

<sup>1</sup> Based on internal analysis, January 2023. Applies to Precision 3480, 3580 and 3581.

<sup>2</sup> Based on internal analysis, March 2023

<sup>3</sup> New packaging is made with up to 93.2% recycled content and up to 61.2% renewable content in the form of renewable paper fibers. Material makeup varies by product and size. Excludes optional items added to order and included in box. Paper packaging materials can be recycled via municipal recycling, where available. System bag is made from recycled plastic and can be recycled along with other thin plastics.

DELL Technologies



**Disclaimers and legal copy**

- 1 Source: IDC Quarterly WW Workstation Industry Share Tracker, Q4 2022 (based on units)
- 2 Based on Dell analysis, Jan 2021, 21% bioplastics in LCD coverlid.
- 3 Based on Dell analysis, February 2023
- 4 Based on 14" workstation Dell models in market, which do not offer 45W processors, as found on Precision 5480, February 2023.