

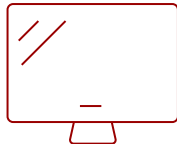
IFP8652-2ED - 86" ANDROID EDLA-CERTIFIED VIEWBOARD INTERACTIVE DISPLAY

Key Features

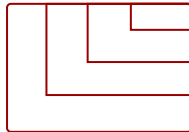
- Android™ EDLA (Enterprise Devices Licensing Agreement) certification
- Advanced Security with Google Workspace
- Full Access to Google Play Store
- Hassle-free Maintenance and Updates
- Intuitive and Ultra-Responsive Touchscreen



86
DISPLAY



PANEL



RESOLUTION



Product Description

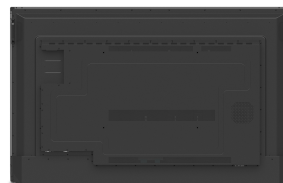
The ViewSonic® ViewBoard® IFP8652-2ED is a 86" interactive display with Android™ EDLA (Enterprise Devices Licensing Agreement) certification. With the Google EDLA certification, this interactive display delivers optimal performance and seamless integration with the Google ecosystem, including Google Workspace (formerly G Suite for Education) and Google Teams. EDLA also offers access to the full Microsoft 365 suite (including Word, PowerPoint, Teams and more) from the Google Play Store. Teachers can easily access their Google accounts, files, and collaborative tools directly from the ViewBoard display. Plus, with a high-accuracy touchscreen and intelligent IR recognition technology, the IFP8652-2ED delivers an intuitive digital whiteboard experience. 4K Ultra HD resolution delivers optimal images for everyone in the room as well as those learning remotely. In addition, the integrated ViewSonic software suite enables easy content sharing and interactive presentations.

Specifications

UPC	766907025095
OS	Android 13 (EDLA)
CPU	Octa-Core CPU (A73*4 + A53*4)
Memory	8GB LPDDR
Storage	64GB eMMC5.0
Microphone	8 array mic (distance: 5M typ., 8M max.)
Internal Speakers	15W (x2)
Subwoofer	15W (x1)
HDMI 2.0 In	3
HDMI Out	1
VGA	1
DisplayPort	1
3.5mm Audio In	1
3.5mm Audio Out	1
SPDIF	1
USB 3.0	3
USB 2.0	5
USB Type C	65W x 1 (front), 100W x 1 (back)
RS232	1
Ethernet LAN (RJ45)	1
Intel® OPS Slot In (80-pin)	1
Voltage	100-240 VAC
Consumption (typical)	148.12W
Stand-by	<0.5W
Temperature	32-104° F (0 - 40° C)
Humidity (non-condensing)	20-80%
Touch Technology	Infrared
Touch Points	Windows: 40, Android: 20
Tip Detection	Dual tips, 2.5mm and 8mm
Other	Object Recognition
Latency	<7ms
Net (lbs)	154.3
Gross (lbs)	183.0
Net (kg)	70.0
Gross (kg)	83.0
Packaging (in.)	83.3 x 51.6 x 8.9

Physical (in.)	77.61 x 47.74 x 4.78
Packaging (mm)	2116 x 1310.0 x 225.0
Physical (mm)	1971.16 x 1212.54 x 121.38
VESA Compatible	800 x 600 mm
Screw Size	M8
Warranty	3-year limited warranty on parts, labor and backlight, onsite warranty
Recycle/Disposal	Please dispose of in accordance with local, state or federal laws.
Package Contents	3m power cord by ship area, Remote control (new VS remote control), 3m touch USB cable, Touch pen x 2, Quick Start Guide + Compliance statement, RS232 adapter, Clamp x 5, Camera Plate, Screw x 8, HDMI cable 3m, AAA Battery x 2, VB-WIFI-005 adapter
Regulations	BIS, cTUVus, COC, EPET, ES8
Ethernet LAN	(10/100/1000M) (USB Type-C 10/100, 1 LAN in and 1 LAN out Android & PC 10/100/1000)
Wifi	VB-WIFI-005 WiFi Adapter
Display Type	LCD
Screen Size	86
Viewable Area (in.)	85.6
Light Source	DLED
Display Resolution	3840 x 2160
Refresh Rate	60Hz
Aspect Ratio	16:9
Static Contrast Ratio	4,000:1
Dynamic Contrast Ratio	5,000:1
Backlight Life (Hours)	50,000
Brightness	350 cd/m2
Response Time (Typical GTG)	6.5ms
Viewing Angles	178° horizontal, 178° vertical
Panel Surface	Anti-Glare 3H + Anti-Fingerprint 7H

UPC: 766907025095



Contact Sales

ViewSonic.com

888.881.8781

email:

salesinfo@viewsonic.com