

PERFORMANCE

Processor

AMD Ryzen™ 5 PRO 6650U (6C / 12T, 2.9 / 4.5GHz, 3MB L2 / 16MB L3)

Graphics

Integrated AMD Radeon™ 660M Graphics

Chipset

AMD SoC Platform

Memory

16GB Soldered LPDDR5-6400

Memory Slots

Memory soldered to systemboard, no slots, dual-channel

Max Memory

16GB soldered memory, not upgradable

Storage

256GB SSD M.2 2280 PCIe® 4.0x4 NVMe® Opal 2.0

Storage Support^[1]

One drive, up to 2TB M.2 2280 SSD

Storage Slot

One M.2 2280 PCIe 4.0 x4 slot

Card Reader

None

Optical

None

Audio Chip

High Definition (HD) Audio, Realtek® ALC3287 codec

Speakers

Stereo speakers, 2W x2, Dolby® Audio™

Camera

FHD 1080p with Privacy Shutter

Microphone

2x, Array

Battery

Integrated 52.5Wh

Power Adapter

65W USB-C® (2-pin)

DESIGN

Display^[2]

16" WUXGA (1920x1200) IPS 300nits Anti-glare, 45% NTSC

Touchscreen

None

Keyboard

Backlit, English

Case Color

Thunder Black

Case Material

PC + 20% CF + 50% GF (Top), PPS (Bottom)

Dimensions (WxDxH)^[3]

361.9 x 255.5 x 20.5 mm (14.25 x 10.06 x 0.81 inches)

Weight^[4]

Starting at 1.810 kg (3.99 lbs)

SOFTWARE

Operating System

Windows® 11 DG Windows 10 Pro 64, English

Bundled Software

None

CONNECTIVITY

Ethernet

100/1000M (RJ-45)

WLAN + Bluetooth^{[5][6]}

MediaTek Wi-Fi® 6E RZ616, 11ax 2x2 + BT5.1

WWAN

None

SIM Card

None

NFC

None

Standard Ports

- 1x Ethernet (RJ-45)
- 1x HDMI® 2.1, up to 4K/60Hz
- 1x Headphone / microphone combo jack (3.5mm)
- 1x USB 3.2 Gen 1
- 1x USB 3.2 Gen 1 (Always On)
- 2x USB-C 3.2 Gen 2 (support data transfer, Power Delivery 3.0 and DisplayPort™ 1.4a)

Optional Ports (configured)

None

Docking

Various docking solutions supported via USB-C.

For more compatible docking solutions, please visit [Docking for ThinkPad® T16 Gen 1 \(AMD\)](#)

Monitor Cable

None

SECURITY & PRIVACY

Smart Card Reader

None

Security Chip

Discrete TPM 2.0 Enabled

Fingerprint Reader

Touch Style, Match-on-Chip, Integrated in Power Button

Physical Locks

Kensington® Nano Security Slot™, 2.5 x 6 mm

Other Security

- Camera privacy shutter
- Glance by Mirametrix®

MANAGEABILITY

System Management

Non-DASH

SERVICE

Base Warranty

3-year, Courier or Carry-in

Included Upgrade

None

ACCESSORIES

Bundled Accessories

None

CERTIFICATIONS

Green Certifications^[7]

- ENERGY STAR® 8.0
- EPEAT™ Gold Registered
- ErP Lot 3
- TCO Certified 9.0
- RoHS compliant

Mil-Spec Test

MIL-STD-810H military test passed

MODEL

TopSeller : Yes **Announce Date** : 2023-08-22

EAN / UPC / JAN : 197532679016 **End of Support** : 2028-12-03

Note:

^[1] The storage capacity supported is based on the test results with current Lenovo storage offerings.

^[2] IPS (in-plane switching) technology may refer to IPS, PLS, ADS, AHVA, AAS.

^[3] The system dimensions may vary depending on configurations.

^[4] The system weight is approximate and based on results in.....

· Lenovo reserves the right to change specifications without notice.

· California Electronic Waste Recycling Fee In California, per state law, Lenovo charges an electronic waste recycling fee on this covered device at the time of sale of the product. For more information, go to:

<https://www.calrecycle.ca.gov/Electronics/Consumer>

To see more note information, please link to
<https://psref.lenovo.com/Detail/2016?M=21CH0067US>

Premier Support - A direct 24x7x365 line to our most elite technicians.



Advanced technical support, 24x7x365, in more than 100 markets



Technical Account Managers for proactive relationship and escalation management



Comprehensive hardware & OEM software support



Priority on service delivery and repair parts



Single point of contact for simplified end-to-end case management



Lenovo Service Connect Portal for customized reporting and product support

Accidental Damage Protection - Protection of your PC from the unexpected.

Experience shows that a significant portion of devices may be damaged (and not covered under warranty) in the first three years. Lenovo's Accidental Damage Protection service covers accidents beyond the system warranty such as drops, spills, bumps and even electrical surges. Make sure your new device has maximum protection, avoid unplanned costs and get peace of mind.

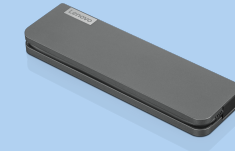
Base Warranty - Included with the systems you purchase, default 1- or 3-year coverage window.

Warranty Extensions & Upgrades - Service and protection that's right for your circumstances.

- Pick Up & Return Courier
- Onsite Support
- Technician Installed Customer
- Replaceable Unit Service
- International Warranty Upgrade

Lenovo may not offer the products, services or features discussed in this document in all regions. Lenovo may withdraw an offering at any time. Information is subject to change without notice. Consult your local representative for information on offerings available in your area. Lenovo reserves the right to change specifications or other product information without notice. Lenovo is not responsible for photographic or typographical errors. Lenovo provides this publication "as is" without warranty of any kind, either express or implied, including the implied warranties of merchantability or fitness for a particular purpose.

Recommended Accessories



Lenovo USB-C Mini Dock_US

40AU0065US

Expand Your Potential with An Universal Mini Dock; Lenovo understands that modern business depends on a wide variety of PC's and even brands to meet their business needs. To make this easier Lenovo USB-C Mini dock is ...

Recommended Services

BEST	3Y Premier Support Plus upgrade from 3Y Courier/Carry-in (5WS1L39101)
BETTER	3Y Premier Support Upgrade from 3Y Courier/Carry-in (5WS0T36152)
GOOD	3Y Onsite upgrade from 3Y Courier/Carry-in (5WS0A23006)

For a full list of accessories and services, please visit:
<https://smartfind.Lenovo.com>



PSREF
Product Specifications
Reference