

PERFORMANCE

Processor^[1]

Intel® Core™ i7-13700T, 16C (8P + 8E) / 24T, Max Turbo up to 4.9GHz, P-core 1.4 / 4.8GHz, E-core 1.0 / 3.6GHz, 30MB

Graphics

Integrated Intel UHD Graphics 770

Chipset

Intel Q670 Chipset

Memory

1x 16GB SO-DIMM DDR5-5600

Memory Slots

Two DDR5 SO-DIMM slots, dual-channel capable

Max Memory^[2]

Up to 64GB (2x 32GB DDR5 SO-DIMM)

Storage

512GB SSD M.2 2280 PCIe® 4.0x4 NVMe® Opal 2.0

Storage Support^[3]

Up to three drives, 1x 2.5" HDD + 2x M.2 SSD

- 2.5" HDD up to 1TB
- M.2 SSD up to 2TB each

Card Reader

No card reader

Optical

None

Audio Chip

High Definition (HD) Audio, Realtek® ALC256VB codec

Speakers

2Wx1

Microphone

No microphone

Power Supply

135W 90% Adapter

DESIGN

Keyboard

USB Traditional Keyboard, Black, English

Mouse

USB Calliope Mouse, Black

Optional Bay

None

Expansion Slots

- Two M.2 PCIe Gen 4x4 slots (for SSD)
- One M.2 slot (for WLAN)

Case Color

Black

Stand

Vertical Stand

Adapter Cage

None

Toolless Chassis Screw

None

Dust Filter

None

Mounting

None

IO Box

None

Form Factor

Tiny (1L)

Dimensions (WxDxH)^[4]

- Tiny only|179 x 182.9 x 36.5 mm with rubber feet (7.05 x 7.2 x 1.44 inches with rubber feet)
- Tiny & ODD|204.2 x 186.6 x 64 mm with rubber feet (8.04 x 7.35 x 2.52 inches with rubber feet)

Weight^[5]

- Tiny only|1.25 kg (2.76 lbs)
- With VESA mount & ODD box|1.74 kg (3.84 lbs)

CONNECTIVITY

Ethernet

Integrated 100/1000M

WLAN + Bluetooth®

Intel Wi-Fi® 6E AX211, 11ax 2x2 + BT5.1, vPro®

Front Ports

- 1x USB-C® 3.2 Gen 2 (support data transfer)
- 1x USB 3.2 Gen 2
- 1x USB 3.2 Gen 2 (Always On and 5V@2.1A charging)
- 1x headphone / microphone combo jack (3.5mm)

Optional Front Ports (configured)

None

Rear Ports

- 2x USB 3.2 Gen 1 (one supports Smart Power On)
- 2x USB 3.2 Gen 2
- 1x HDMI® 2.1 TMDS
- 1x DisplayPort™ 1.4
- 1x Ethernet (RJ-45)

Optional Rear Ports (configured)

1x DP

Monitor Cable

None

SECURITY & PRIVACY

Security Chip

Discrete TPM 2.0, TCG certified

Fingerprint Reader

No fingerprint reader

Physical Locks

Kensington® Security Slot™, 3 x 7 mm

Chassis Intrusion Switch

Chassis Intrusion Switch

MANAGEABILITY

System Management^[6]

Intel® vPro® Enterprise

SERVICE

Base Warranty

3-year, Onsite

Included Upgrade

None

CERTIFICATIONS

Green Certifications^[7]

- ENERGY STAR® 8.0
- EPEAT™ Silver Registered
- ErP Lot 3
- TCO Certified 9.0
- RoHS compliant

Mil-Spec Test

MIL-STD-810H military test passed

SOFTWARE

Operating System

Windows® 11 Pro, English

Bundled Software

None

MODEL

TopSeller : Yes **Announce Date** : 2023-07-18

EAN / UPC / JAN : 196804835020 **End of Support** : 2030-02-18

Note:

[1] Intel Max Turbo frequency will vary depending on application workload and the hardware and software configurations, see <http://www.intel.com/technology/turboboost/> for more information.

[2] The max memory is based on the test results with current.....

· Lenovo reserves the right to change specifications without notice.

To see more note information, please link to

<https://psref.lenovo.com/Detail/2230?M=12E90003US>

Premier Support - A direct 24x7x365 line to our most elite technicians.



Advanced technical support, 24x7x365, in more than 100 markets



Technical Account Managers for proactive relationship and escalation management



Comprehensive hardware & OEM software support



Priority on service delivery and repair parts



Single point of contact for simplified end-to-end case management



Lenovo Service Connect Portal for customized reporting and product support

Accidental Damage Protection - Protection of your PC from the unexpected.

Experience shows that a significant portion of devices may be damaged (and not covered under warranty) in the first three years. Lenovo's Accidental Damage Protection service covers accidents beyond the system warranty such as drops, spills, bumps and even electrical surges. Make sure your new device has maximum protection, avoid unplanned costs and get peace of mind.

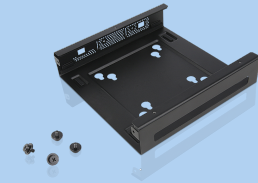
Base Warranty - Included with the systems you purchase, default 1- or 3-year coverage window.

Warranty Extensions & Upgrades - Service and protection that's right for your circumstances.

- Pick Up & Return Courier
- Onsite Support
- Technician Installed Customer
- Replaceable Unit Service
- International Warranty Upgrade

Lenovo may not offer the products, services or features discussed in this document in all regions. Lenovo may withdraw an offering at any time. Information is subject to change without notice. Consult your local representative for information on offerings available in your area. Lenovo reserves the right to change specifications or other product information without notice. Lenovo is not responsible for photographic or typographical errors. Lenovo provides this publication "as is" without warranty of any kind, either express or implied, including the implied warranties of merchantability or fitness for a particular purpose.

Recommended Accessories



ThinkCentre Tiny VESA Mount II

4XFON03161

The ThinkCentre Tiny VESA Mount II is a unique design specific to house the Tiny PC while featuring the universal VESA mount configuration. The VESA standard enables this mount to attach to anything that is VESA comp...

Recommended Services

BEST	4Y Premier Support Plus upgrade from 3Y Onsite (5WSIL39202)
BETTER	3Y Premier Support Plus upgrade from 3Y Onsite (5WSIL39468)
GOOD	3Y Premier Support Upgrade from 3Y Onsite (5WS0U26647)

For a full list of accessories and services, please visit:
<https://smartfind.Lenovo.com>



PSREF
Product Specifications
Reference