

Product Highlights

High-Speed Networking

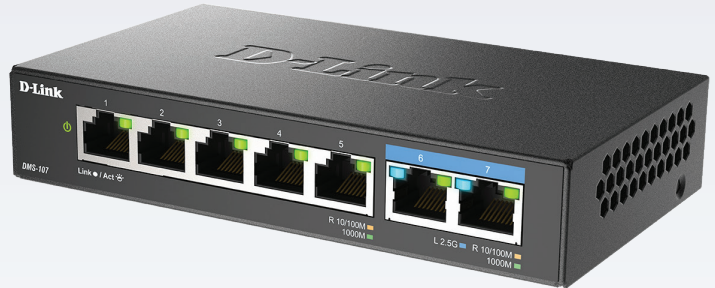
Five Gigabit and two 2.5 Gigabit Ethernet ports provide multi-speed transmission with high-performance expectation in WiFi 6 network, allowing fast data transfers and maximizing network bandwidth

Durable Design

Metal housing and fanless design improves heat dissipation, enhances durability, and allows noise-free operation

Environmentally Friendly

IEEE 802.3az Energy-Efficient Ethernet (EEE) reduces power consumption when ports are not in use, conserving energy and lowering costs



DMS-107

7-Port Multi-Gigabit Unmanaged Switch

Features

Fast Connectivity

- Five Gigabit with two 2.5 Gigabit LAN ports for high-speed wired connections
- Plug-and-play installation for convenience

Green Ethernet Features

- IEEE 802.3az Energy-Efficient Ethernet (EEE)
- Link status detection

Eco-Friendly Design

- RoHS compliant

Silent Operation

- Fanless design

The DMS-107 7-Port Multi-Gigabit Unmanaged Switch is ideally suited for Small Office Home Office (SOHO) environments. With a durable design, silent operation, and plug-and-play functionality, the DMS-107 switch can be easily set up and be placed in almost any location where network connectivity is required. Support for IEEE 802.3az Energy-Efficient Ethernet (EEE), 802.1p Quality of Service (QoS), and multi-Gigabit Ethernet connection speeds provide advanced features in a compact package.

Integrated Networking

The DMS-107 switch uses auto-sensing ports, providing a small workgroup to flexibly connect Ethernet, Fast Ethernet, Gigabit and 2.5 Gigabit devices to create an integrated network. These ports detect the network speed via auto-negotiation allowing you to get the maximum speed possible for each device connected to your network.

Simplified Installation

All of the ports on the DMS-107 switch supports automatic MDI/MDIX crossover, eliminating the need for crossover cables. Each port can be plugged in directly to a server, hub, router, or switch using regular straight-through twisted-pair Ethernet cables. In addition, the DMS-107 switch features multiple front, easy-to-access Ethernet ports with LED indicators per port to easily distinguish link status.

7-Port Multi-Gigabit Unmanaged Switch

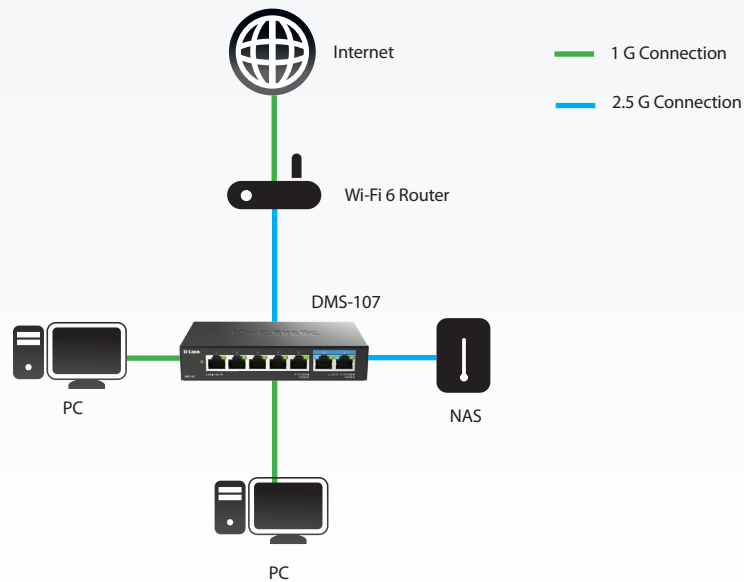
Green Technology

The DMS-107 switch features green technology, such as IEEE 802.3az Energy-Efficient Ethernet (EEE) and link status detection. Energy-Efficient Ethernet reduces power consumption of the switch when network utilization is low, reducing the cost of ownership during periods of inactivity. Link status detection automatically powers down ports when there is no link detected, saving power when the connected device has been shut down or disconnected.

Traffic Management

The DMS-107 switch includes traffic management features, such as IEEE 802.1p Quality of Service (QoS) and IEEE 802.3x Flow Control. The 802.1p QoS feature allows traffic to be classified in 8 priority levels, allowing different types of traffic to be prioritized, depending on their importance. Flow Control will temporarily stop data transmission when the switch's input buffer is full, helping to minimize dropped packets and providing a more reliable connection for all of your connected devices.

Example Network Topology



7-Port Multi-Gigabit Unmanaged Switch

Technical Specifications

General

HW Version	<ul style="list-style-type: none"> • A1
Device Interfaces	<ul style="list-style-type: none"> • 5 x 10/100/1000Mbps ports • 2 x 10/100Mbps/1G/2.5G ports
Standards	<ul style="list-style-type: none"> • IEEE 802.3 10BASE-T • IEEE 802.3u 100BASE-TX • IEEE 802.3ab 1000BASE-T • IEEE 802.3bz 2.5GBASE-T • IEEE 802.3x Flow Control¹ • IEEE 802.1p QoS² • IEEE 802.3az Energy-Efficient Ethernet (EEE)
Media Interface Exchange	<ul style="list-style-type: none"> • Auto MDI/MDIX adjustment for all ports

Performance

Transmission Method	<ul style="list-style-type: none"> • Store-and-forward
Switching Capacity	<ul style="list-style-type: none"> • 20 Gbps
Max. Packet Forwarding Rate	<ul style="list-style-type: none"> • 14.88 Mpps
MAC Address Table	<ul style="list-style-type: none"> • 2K entries
MAC Address Learning	<ul style="list-style-type: none"> • Automatic update
Packet Buffer	<ul style="list-style-type: none"> • 2Mbit

LEDs

Power (per unit)	<ul style="list-style-type: none"> ✓
Link/Activity (per port)	<ul style="list-style-type: none"> ✓

Physical

Dimensions	<ul style="list-style-type: none"> • 145 x 82 x 28 mm
Weight	<ul style="list-style-type: none"> • 295.2 g
Power	<ul style="list-style-type: none"> • 12V/0.5A
Maximum Power Consumption	<ul style="list-style-type: none"> • 3.37 Watt
Temperature	<ul style="list-style-type: none"> • Operating: 0 to 40 °C (32 to 104 °F) • Storage: -10 to 70 °C (14 to 158 °F)
Humidity	<ul style="list-style-type: none"> • Operating: 10% to 90% RH • Storage: 5% to 90% RH
MTBF	<ul style="list-style-type: none"> • 944,277.78 hours
Heat Dissipation	<ul style="list-style-type: none"> • 14.28 BTU/h

7-Port Multi-Gigabit Unmanaged Switch

Certifications	
Safety	<ul style="list-style-type: none">• LVD• BSMI
EMI/EMC	<ul style="list-style-type: none">• CE Class B• RCM Class B• FCC Class B• VCCI Class B• IC Class B• BSMI Class B
Order Information	
<i>Part Number</i>	<i>Description</i>
DMS-107	5-ports 10/100/1000Mbps + 2-ports 10/100Mbps/1G/2.5G Unmanaged Switch

¹ The 2.5G interface supports force mode only.

² Supported on the 1G interface only.

Updated 2022/6/7