

EOS R50

TECHNICAL SPECIFICATIONS



Canon

EOS R50

Turn up your travels



COMPACT COMPANION

Sleek and easy to use, the EOS R50 boasts a 375g lightweight body with features designed to create standout photos and videos. Whether it be for your travels or content creation, the EOS R50 makes a great on-the-go companion.



RE-LIVE MOMENTS IN VIDEO

Capture moments in motion with 4K 30p (6K oversampling) and Full HD 120p slow motion videos. Thanks to the Auto Level mode, capture subjects like landscapes with straight horizons. Highly compatible with smartphones and social media, the EOS R50 is equipped with vertical video.



QUALITY IMAGES MADE SIMPLE

The EOS R50 is equipped with a 24.2MP APS-C sensor and automatic shooting modes such as Creative Assist, Creative Bracket and Advanced A+ for high quality images made simple. It's also compatible with a wide range of RF-S and RF lenses, so is a camera that can grow with you.



CONNECT WITH EASE

The EOS R50 enables you to connect to the cloud or smart device seamlessly to edit, share or store with image.canon. Get outstanding photos and videos instantly to your smartphone with Bluetooth, Wi-Fi or USB wired connection.



EOS R50

Turn up your travels



SUBJECTS IN-FOCUS

Have the freedom to focus on composition while the camera reliably follows your subjects. The EOS R50 supports advanced tracking for humans, animals and vehicles. It automatically responds to dynamically changing scenes, and can track subjects over the entire frame.



NEVER MISS A MOMENT

Shoot decisive moments with high speed with up to 15 shots per second. The electronic shutter generates no shutter noise, making it useful when shooting wildlife, concerts and other situations where you want to stay quiet and unnoticed.



EOS R50 | ADDITIONAL FEATURES

SCENE INTELLIGENT AUTO

Get richer photos with fully-automatic shooting modes that adjust to each scene with Creative Assist and the new Creative Bracket and Advanced A+ modes.



PANORAMIC PHOTO MODE

Fit more into your photo with panoramic mode. The panning direction can be set horizontally or vertically for high-rise buildings.



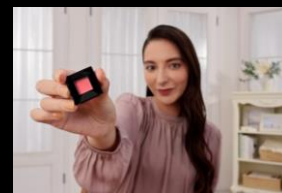
BUILT-IN FLASH

Have extra peace of mind when shooting in dark or backlit scenes with a built-in flash.



MOVIE FOR CLOSE-UP DEMOS AND MOVIE IMAGE STABILISATION (IS)

Great for product demos the Movie for Close-Up Demos quickly switches focuses to the subject closest to the camera. Movie IS helps reduce camera shake when shooting handheld.



HIGH-QUALITY VIDEO CONFERENCING AND LIVESTREAMING

Simply connect via USB with Movie Class and Audio Class compatibility. There are no additional drivers needed for downloading.



HYBRID AUTO

Automatically create summaries of the day's activities with short movie clips generated into a short digest movie.



NEW GENERATION MULTI-FUNCTION SHOE

Have cable-free connection with the 21-pin multi-function shoe compatible with accessories such as the Directional Stereo Microphone DM-E1D.



EOS R50 | SPECIFICATIONS

TYPE			
Lens mount		RF mount	
Image processor		DIGIC X	
Compatible lenses		RF/RF-S lenses (EF/EF-S lenses with EF-EOS R)	
IMAGE SENSOR			
Screen size		APS-C size	
Effective pixels (Max. approx. megapixels)		24.2	
RECORDING MEDIA			
Card slot	Single slot	SDXC/SDHC/SD (UHS-I compatible)	
STILL PHOTO RECORDING			
Image quality		JPEG / HEIF / RAW / C-RAW	
Digital tele-converter			
Maximum burst (approx.) ¹	Electronic 1st curtain	JPEG Large/Fine	42
		RAW	7
	Electronic shutter	JPEG Large/Fine	28
		RAW	7
MOVIE RECORDING			
MP4 recording		Yes	
Movie recording size	4K UHD	Yes (6K→4K) (30p/25p/23.98p) (oversampling)	
	Full HD	Yes	
High Frame Rate movies		Full HD (120p/100p)	
Time-lapse movies	Full HD	Yes	
	Retention of settings in case of auto power off before recording	Yes	
Digital zoom		Yes (approx. 1–10×)	
Video compression format	ALL-I	Yes (for time-lapse movies)	
	IPB (Standard) / IPB (Light)	Yes	
Movie recording during still photo shooting		Yes	
Built-in microphone	Stereo	Yes	
HDMI output for movie footage		Yes	
Maximum recording time per movie	Normal movies	1 hr.	
	High Frame Rate	120p / 100p	15 min.
Overheat control (in movie recording)		Yes	
WHITE BALANCE			
Shoot to set white balance		Yes	
IMAGE CREATION AND IMAGE PROCESSING			
Picture Style		Yes	
Clarity		Yes	
Auto Lighting Optimizer		Yes	
Highlight tone priority	Still photos	Disable / Enable / Enhanced	
	Movies	Disable / Enable / Enhanced	
Long exposure noise reduction		Yes	
High ISO speed noise reduction		Yes	
Lens aberration correction (still photos/movies)		Digital Lens Optimizer: Enhanced (still photos) / Distortion correction (movies) / Focus breathing correction (movies)	

EOS R50 | SPECIFICATIONS (Continued)

AUTOFOCUS		
Focusing brightness range * Except RF lenses with a Defocus Smoothing (DS) coating	Still photos (centre AF point, One-Shot AF, at room temperature, ISO 100)	EV -4.0 to 20 (using an f/1.2 lens)
	Movies (Full HD, centre AF point, One-Shot AF, at room temperature, ISO 100, and 29.97 fps)	EV -3.5 to 20 (using an f/1.2 lens)
AF operation	One-Shot AF	Yes
	AI Focus AF (still photos)	Yes
	Servo AF (still photos)/ Movie Servo AF	Yes
Focusing area ^{2,3}	mode 100 ⁴	Horizontal: approx. 100%, Vertical: approx. 100%
	mode 90	Horizontal: approx. 90%, Vertical: approx. 100%
	mode 80	Horizontal: approx. 80%, Vertical: approx. 80%
	mode 60	Horizontal: approx. 60%, Vertical: approx. 60%
No. of AF zones available for auto selection (max. zones)		651
AF area (AF method)	Spot AF	Yes
	1-point AF	Yes
	Expand AF area: Above, below, left, right	Yes
	Expand AF area: Around	Yes
	Flexible Zone AF 1 / 2 / 3	Yes
	Whole area AF	Yes
Touch & drag AF settings		Yes
	Tap to select subject to detect	Yes (supported in all AF areas)
	Relative sensitivity	Yes
Movie Servo AF		Yes
Movie Servo AF speed		Yes
Subject detection		Auto / People / Animal - Dogs, Cats, Birds / Vehicles - Motorsports cars, Motorsports, Motorcycles / None
Eye detection		Yes (Auto)
Whole area tracking		Yes
Servo AF	Available AF area modes	Whole area AF mode
AF-assist beam firing	LED AF assist beam only	Yes
Focus guide		Yes
VIEWFINDER		
Type		Electronic (EVF)
Dimensions		0.39 inch
Dot count (approx., 10,000 dots)		236
Electronic viewfinder refresh rate (max. fps)		119.88
Coverage (approx. %)		100
Magnification (approx. ×; 50mm lens at ∞, -1 dpt)		0.95
Eyepoint (approx. mm)		22
Dioptric adjustment (approx. dpt)		-3.0 to +1.0
Fine-tuning colour tone		Yes
SCREEN		
Dot count (approx., 10,000 dots)		162
Screen size		3.0 inch
Angle adjustment		Vari-angle
Touch-based menu magnification		Yes

EOS R50 | SPECIFICATIONS (Continued)

DISPLAY SETTINGS (VIEWFINDER AND SCREEN)		
Display performance (Power saving/Smooth)		Yes
Brightness adjustment		Yes
Display simulation		Yes
Optical viewfinder simulation (View assist)		Yes
Focal length display / SA variable amount		Yes
Recording emphasis		Yes
Aspect marker		Yes
SHOOTING MODE		
Still photo shooting mode		A+/Hybrid Auto/ Special scene/Creative filters/ P/Tv/Av/M
Special scene (Excerpts)		Group photos / Panoramic shot / Kids
A+ Assist (in A+ mode)		Creative Assist / Advanced A+ / Creative bracketing
Movie recording mode		Movie for close-up demos / Movie IS mode / HDR movies / Movie auto exposure / Movie manual exposure / Custom shooting mode (C mode)
SHOOTING CREATIVE FILTERS		
Still photos		Yes
Movies		Yes
EXPOSURE CONTROL		
Metering brightness range	Still photos (at room temperature, ISO 100)	EV -2 to 20
	Movies (at room temperature, ISO 100)	EV 0 to 20
Movie Av in 1/8-stop increments		Yes
Anti-flicker shooting (in still photo shooting)		Yes
Zebra display (in movie recording)		Yes
ISO speed (Still photo)	Normal	100 to 32000
	ISO expansion (max. ISO equivalent)	H: 51200
ISO speed (Normal movies)	Normal	100 to 12800
	Expansion for faster speeds (max. ISO equivalent)	H: 25600
SHUTTER		
Shutter mode	Electronic 1st curtain	Yes
	Electronic shutter	Yes
Shutter speed (sec.)	Electronic 1st curtain	1/4000–30
	Electronic shutter	1/8000–30
X-sync speed (sec.)	Electronic 1st curtain	X-sync at 1/250 sec.
HDR SHOOTING		
Silent shutter function		Yes
Shutter at shutdown		Open only
HDR PQ (Still photos/Movies)		Yes
HDR mode (Still photos)		Yes
	Setting simultaneously with HDR PQ	Yes
FOCUS BRACKETING		
Focus bracketing		Yes
In-camera depth compositing / Cropped depth compositing		Yes
IMAGE STABILIZATION (IS MODE)		
Compatible with lens optical IS		Yes
Coordinated control: lens optical IS + Movie digital IS		Yes ⁸
Movie digital IS		Yes
Subject blur guide in Panning mode		Yes

EOS R50 | SPECIFICATIONS (Continued)

AUTO LEVEL			
Movies		Yes	
DRIVE			
High-speed continuous shooting +		Yes	
Continuous shooting speed	High-speed continuous shooting +	Electronic 1st curtain	12
		Electronic shutter	15
	High-speed continuous shooting	Electronic 1st curtain	7.6
		Electronic shutter	15
	Low-speed continuous shooting	Electronic 1st curtain	3.0
		Electronic shutter	5.0
High-speed display		Yes	
Display fading/black-out		Yes	
TIMER SHOOTING			
Movie self-timer		Yes	
FLASH			
Built-in flash (guide number, ISO 100, approx. m)		6	
External flash		E-TTL balance / Evaluative (Face Priority) / Continuous flash control / Continuous shooting priority (CSP) mode / Speedlite menu direct button / Quick flash group control	
PLAYBACK			
Erasure of all continuous images		Yes	
IMAGE PROCESSING AFTER SHOOTING			
HEIF→JPEG conversion		Yes	
	Batch conversion	Yes	
Playback creative filters (for still photos)		Yes	
Creative Assist (during playback)		Yes	
Frame grab from 4K movies		Yes	
QUICK CONTROL FUNCTION			
Feature guide		Yes	
Quick Control customisation		Yes	
MENU FUNCTION			
AF (tab)		Yes	
Custom Functions (tab)		Yes	
DIRECT PRINTING			
Wireless connections		Yes	
CUSTOMISATION			
Customise buttons		Yes	
Customise control ring		Yes	
APPEARANCE AND CAMERA CONTROLS			
Camera Controls		Movie shooting button / ISO speed button / Cross keys / Main dial	
EXTERNAL INTERFACE			
Digital terminal		USB Type-C	
HDMI output terminal		Type D	
External microphone input terminal		Yes	
Multi-function shoe	21-pin contact	Yes	

EOS R50 | SPECIFICATIONS (Continued)

POWER SOURCE		
Battery pack		LP-E17
Battery information		Yes
USB power support	Charging	Yes
	Powering the camera	Yes
AC power source		AC-E6N / DR-E18
Number of available shots (approx., with Power saving, at 23°C/73°F)	Viewfinder	Power saving AE50%: 310 ⁶ /AE100%: 320 ⁷
	Screen	Power saving AE50%: 440 ⁶ /AE100%: 450 ⁷
Power saving		Yes
	Screen dimmer	Yes
High temperature warning (indicator)		Yes
COMMUNICATION FUNCTIONS		
Standards compliance	Built-in Wi-Fi (wireless LAN)	Equivalent to IEEE 802.11b/g/n
	Bluetooth	Ver. 4.2
	USB	Equivalent to Hi-Speed USB (USB 2.0)
WPA3-Personal support		Yes
Camera Connect (USB)		Wireless LAN connection / USB connection / USB connection
EOS Utility (wireless LAN/USB connection)		Yes
image.canon/Canon Photo Upload Service (wireless LAN connection)		Yes
Remote control shooting with BR-E1 (Bluetooth connection)		Support in all drive modes / Start/stop movie recording during still photo shooting / Reduce/magnify with Movie digital zoom
Video calls/streaming (USB connection)		Yes
DIMENSIONS AND WEIGHT		
Dimensions (approx. width × height × depth, based on CIPA standards)		116.3 × 85.5 × 68.8mm
Weight (approx. including battery and card)		375g

¹ Using high-speed cards. Continuous shooting speed may be slower depending on factors such as measurement conditions and camera settings.

² The focusing area varies depending on the lens attached.

³ Focusing area “modes” are only used internally and should not be included in published materials.

⁴ Only with a mode 90 lens attached and the camera set to Whole area AF, or with subject detection if Whole area AF is not set.

May not be possible to move AF points to the edge of the focusing area under some scene and subject conditions.

⁵ 1/4000–30 sec. when set to High-speed continuous shooting +.

⁶ Based on CIPA standards.

⁷ According to Canon measurement conditions, which are based on CIPA standards.

⁸ Available when using the RF/RF-S lens with Image Stabilization function.

Canon

**www.canon.com.au
www.canon.co.nz**