



Operating Room Solutions

CuratOR[®] PRODUCTS

EN



EXPERIENCE THE FUTURE OF
OPERATING ROOM TECHNOLOGY

Making Each Life Visual

Every life is unique. Every person's medical treatment should be tailored to meet their individual needs.

In the age of precision medicine, the possibilities offered by biotechnologies, artificial intelligence, and information technology open up completely new avenues for diagnosis, prevention, and treatment.

Precision requires comprehensive information. Collecting, linking, and analyzing data, as well as recording, storing, and evaluating image data therefore represents a critical resource for modern medical practices.

Faster treatment success, better quality of life: Technical innovation has an immediate impact on the medical processes in hospitals and operating rooms. Which is why we employ all of our experience and work together with highly qualified medical teams to produce reliable systems for processing image data in the age of precision medicine.

Our knowledge is in the service of better health. Every life is worth it.

Making Each Life Visual.

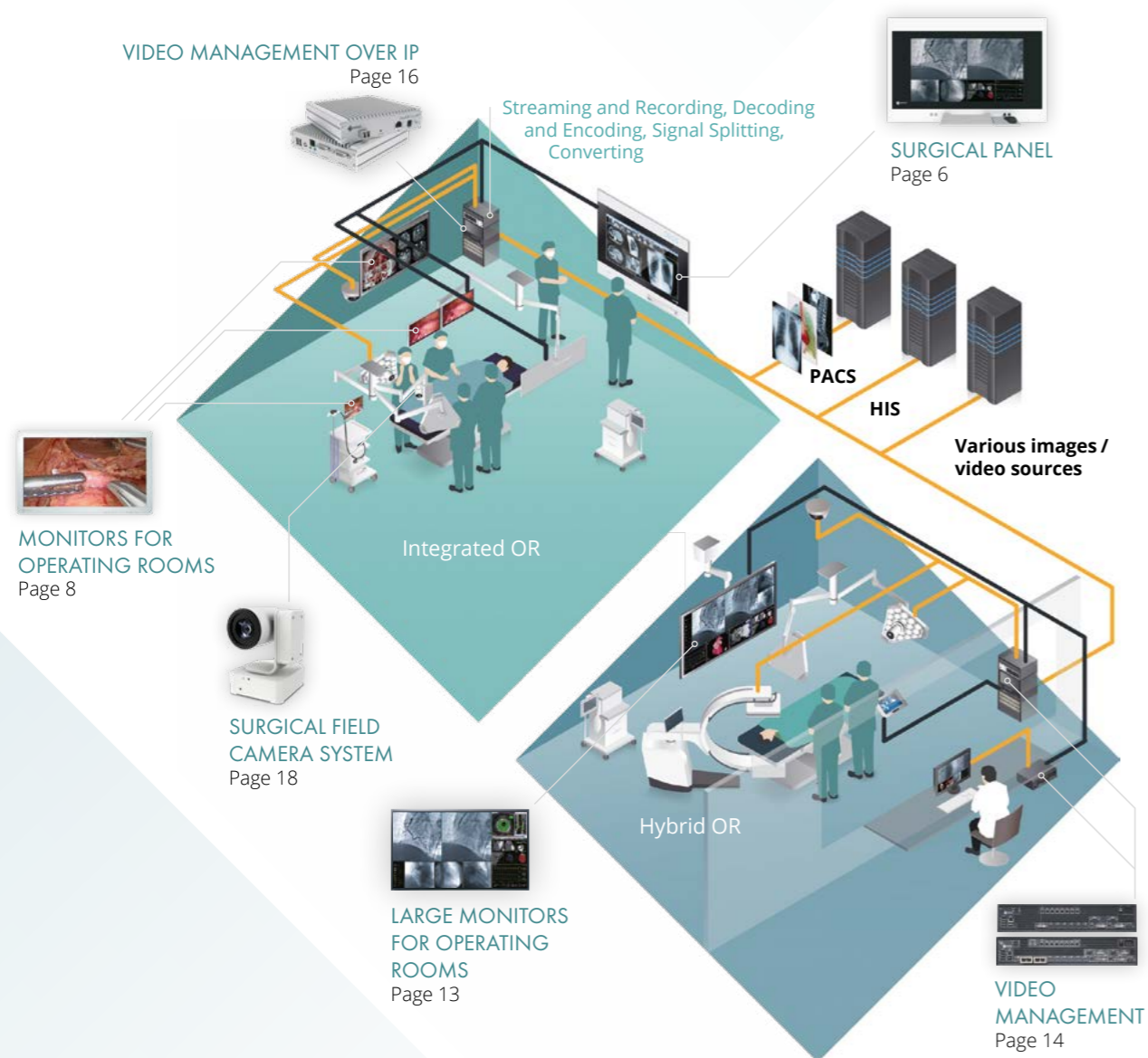


FLEXIBLE. INTELLIGENT. EXPANDABLE.

OR SYSTEM SOLUTIONS FOR THE OPERATING ROOM

High-performance technology for image reproduction and video management in the OR meets expertise and experience. Designed for scalability and extensibility, EIZO develops visual solutions specifically for the requirements and workflow in the OR. EIZO CuratOR addresses the needs of surgeons, surgical teams and hospital technology. Specializing in the challenges of medical practice in the 21st century.

- Precise image representation for demanding requirements
- Modular system components for customized solutions
- Seamless integration in hospital IT and documentation systems
- Providing information and image data where needed



A MODULAR SYSTEM FOR EVERY APPLICATION SCENARIO

From a simple workstation to a complex multiroom installation: with its modular design, EIZO CuratOR supports a wide variety of requirements and is almost infinitely expandable.

The OR Workstation

Central unit for all image and video signals: the Surgical Panel with built-in EIZO monitor and powerful PC. Whether simple image display or central working and operating station – thanks to different expansion options, the Surgical Panel is the flexible basis of an EIZO CuratOR solution.

Effective Video Management

Image viewing at the press of a button: EIZO's video management solutions support the workflow in the OR. Adapted to the needs of OR staff, CuratOR video management allows you to manage various situations in the OR.

Interfaces to OR Documentation (HIS/RIS/PACS)

HIS, RIS and PACS systems can be incorporated via existing interfaces. Effortless integration into hospital IT, for example, reduces the amount of documentation required and supports education, validation and process analysis. Flexible, intuitive, personalized.

Video Management Over IP

With CuratOR Alipe, EIZO provides a powerful way for network-based transmission of video, audio, and control data. Uncompressed and in real time.

Multiroom Solutions

Whether for documentation or teaching purposes – EIZO CuratOR can be expanded as required and enables the networking and communication throughout different rooms, even over long distances.



SURGICAL PANEL

CENTRAL UNIT IN THE OPERATING ROOM

Viewing Station

Modern operating rooms are no longer conceivable without digital image viewing systems. Surgical Panel with integrated large screens provide the surgical team with excellent images even at a greater viewing distance.



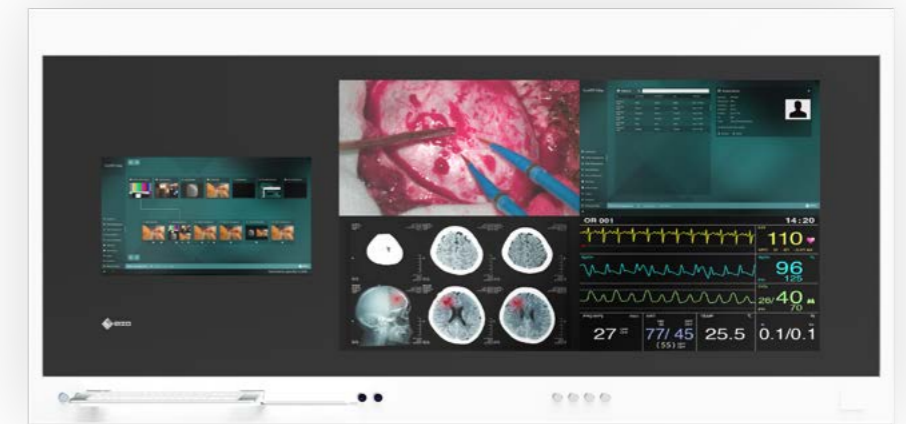
In addition to customer-specific configurations, EIZO offers a number of standard Surgical Panel optimized specifically for a range of applications and effective integration into the operating room workflow.

Nurse Station

These Surgical Panel are fitted with screen sizes that are ideal for work performed by OR nursing staff. The user-friendly configuration was designed with ergonomic head and body positions in mind and offers ideal viewing conditions when interacting with the local OR systems.

HIS Station

Surgical Panel with two integrated monitors serve as a space-saving combination of work and viewing stations. Different applications can thus be covered from a single device.



In the digital age, X-ray film and analog X-ray light boxes are a thing of the past. Today's digital systems are integrated into the hospital's IT infrastructure and support a wide range of workflows in the operating room.



Intuitive Touch Operation

Every CuratOR Surgical Panel can be equipped with a touchscreen to facilitate intuitive operation of software in the OR. They are easily operated while wearing gloves for use in sterile environments.

Optimized View Through Simple LUT Switching

All 4K Surgical Panel are equipped with an easy-access LUT switch as standard. One of the five predefined lookup tables can be selected at the simple press of a button. This allows optimal display of various medical images and videos.



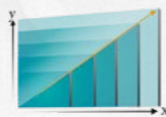
Customized Housing

The housing dimensions can be customized along with the combination of the powdered stainless steel and glass housing materials. Customers can select colors from the RAL palette range to suit the OR color scheme.



Wide Ranging Monitor Options

The Surgical Panel are available in a wide range of screen diagonals for flexibly meeting local application requirements. The option to combine a viewing unit with a 24" Full HD HIS workstation also offers a full viewing environment while saving on space.



Flexible Integrated Video Management VMbasic

A modular interior design enables customer-specific configuration. Every 4K Surgical Panel can be optionally equipped with the video management function VMbasic. Easily switch between video signals connected internally or on the front at the simple press of a button. Two further buttons allow the selection of the preset layouts and the selection of the active window.

Accessories and Connectivity

Surgical Panel have front USB ports as standard for connecting peripheral devices. There is also the option of integrating additional interfaces on the front frame. These can be individually connected to the inputs available in video management.



OR Integration and Cleanability

With its flat surface, the Surgical Panel can be completely sealed in the front and integrated in the OR wall, ensuring safety and simple cleaning and disinfection procedures. With intelligent heat distribution over the front surface, the units do not require specialized ventilation systems.



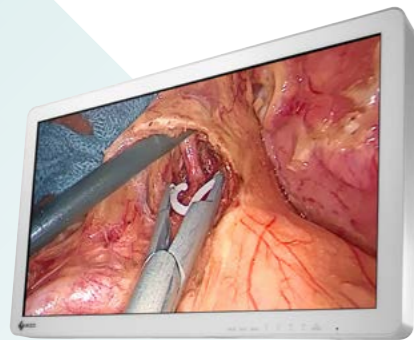
Easy Maintenance and Service

The hinged front allows easy access to the device without complicated disassembly or tools. With its unique locking system, no screws need to be taken out, making maintenance procedures on the installed components simple and efficient.

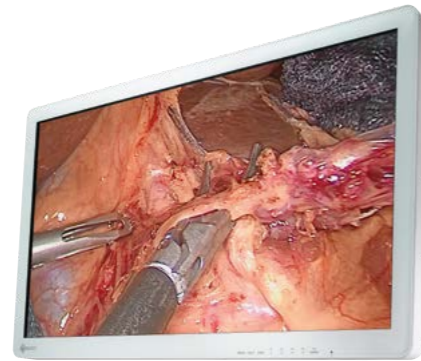


MONITORS FOR OPERATING ROOMS

Faithful image reproduction at the highest accuracy allows for precise work in the OR.
EIZO's endoscopy monitors assist surgeons perfectly in today's sophisticated minimally invasive and open surgical procedures. With the 3D technology, the surgeon can see organs and tissue structures in lifelike effect of depth.



EX2721
27" (68.6 cm) LCD Monitor
27" WIDE



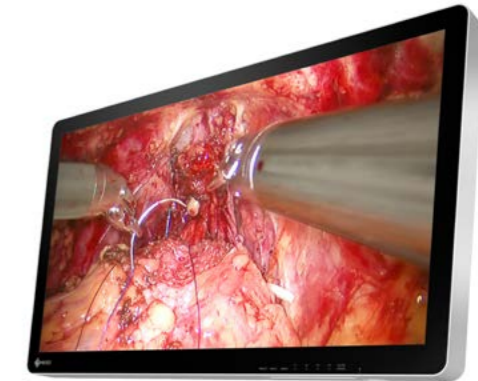
EX3220
31.5" (80.1 cm) LCD Monitor
31.5" WIDE



EX3242
32" (81.3 cm) LCD Monitor
32" WIDE 4K



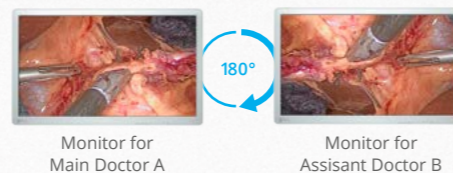
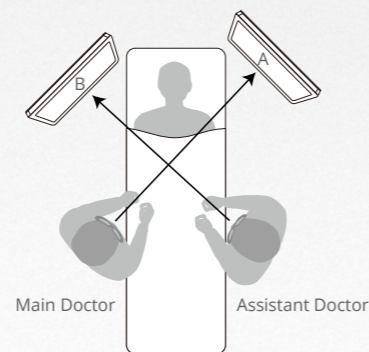
EX3220-3D
31.5" (80.1 cm) LCD Monitor
31.5" WIDE 3D



EX3242-3D
32" (81.3 cm) LCD Monitor
32" WIDE 3D 4K

Fully Flat Design for Safety and Hygiene

In consideration for safety, EIZO's surgical monitors adopt rounded corners. Furthermore the front is covered with a fully flat protective panel that protects against foreign material and splashes to a level of IP45 (whole monitor has IP32 rating). Additionally with the attached cable cover, cables can be stored neatly out of sight, increasing safety and hygiene in the operating room.

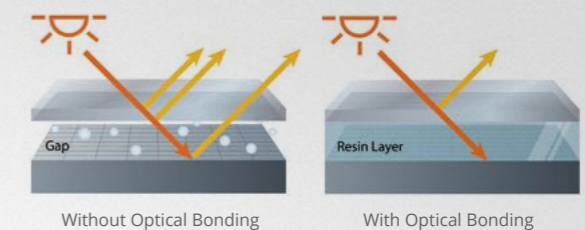


180° Rotation and Mirroring

Regardless of the orientation of the surgical camera, you can rotate the displayed image by 180° or mirror it to find the perfect operating view. This allows you to match the image with the line of sight of surrounding assistants and surgeons, improving convenience in the operating room.

3D Surgical Display with High Visibility

With high definition, brightness and contrast ratio, the EX3220-3D, and the EX3242-3D faithfully reproduce 3D surgical images for endoscopy and operation microscope feeds; creating a feeling of depth where stereoscopic imagery is required. They use a polarized system to display 3D images in all formats (Side-by-Side, Line-by-Line, Top & Bottom or SIMUL 3D) with excellent color characteristics and without flicker.

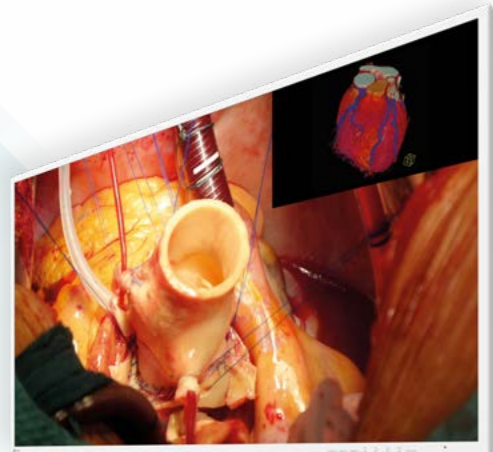


Reduced Reflections and High Durability

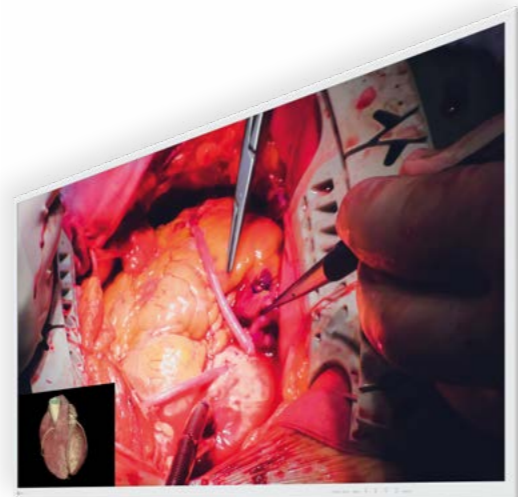
The 3D monitors and the EX3242 are manufactured with optical bonding. With this technology the air pocket between the LCD panel and external glass is filled by optoelastic resin. This reduces the screen reflections, protects the LCD panel from impacts, dust and moisture, and prevents condensation.

MONITORS FOR OPERATING ROOMS

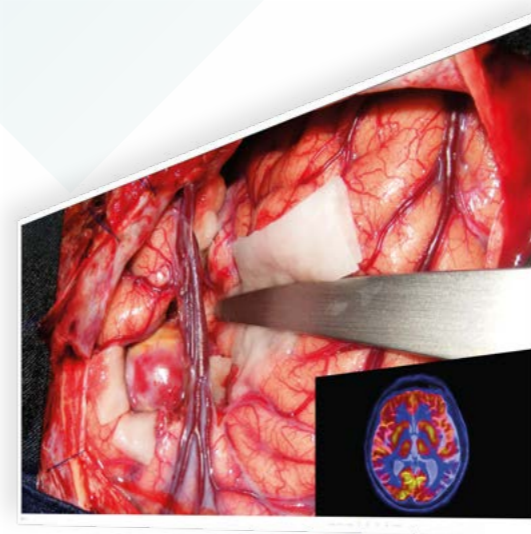
Surgical teams in the operating room depend upon the most advanced technologies. Imaging applications have developed to an essential aid. Due to their ultra-high resolution and additional functions like color reproduction, EIZO's 4K UHD monitors provide brilliant pictures in completely for a highly detailed view.



EX4342
43" (109.2 cm) LCD Monitor
43" WIDE 4K



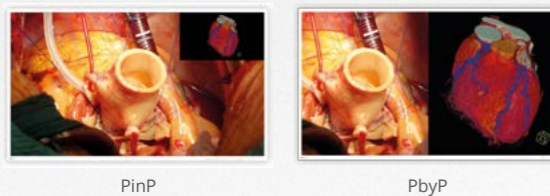
EX4942
49" (124.5 cm) LCD Monitor
49" WIDE 4K



EX5542
55" (139.7 cm) LCD Monitor
55" WIDE 4K



EX5841
57.5" (146.1 cm) LCD Monitor
57.5" WIDE 4K

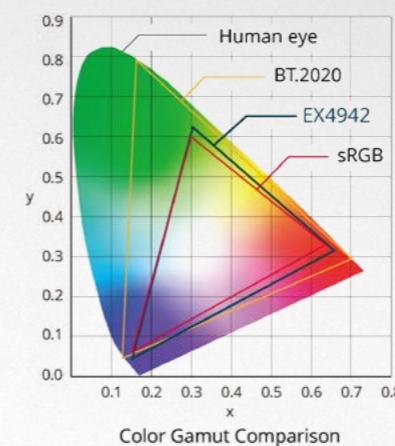
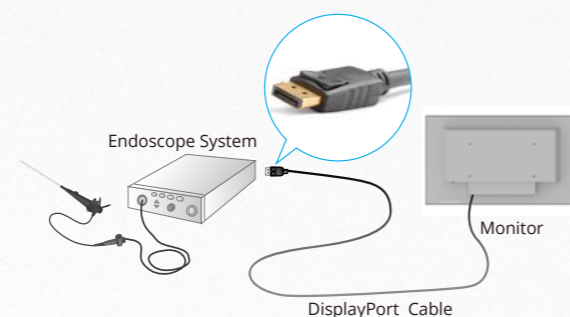


View Two Signals on One Screen

Two different types of signal sources can be viewed simultaneously on one monitor side by side using the PbyP (Picture-by-Picture) or one displayed within an inset window over the other with the PinP (Picture-in-Picture) function. For example, this allows monitoring vitals or ultrasound endoscopes simultaneously in addition to surgical images.

Streamlined Connectivity

Up to 4K UHD images are displayed at 60 frames per second using BNC (12G-SDI), DisplayPort or HDMI®, with one cable over various modalities. When connected via BNC (12G-SDI), stable transmission is achieved even over long distances of 30 meters.

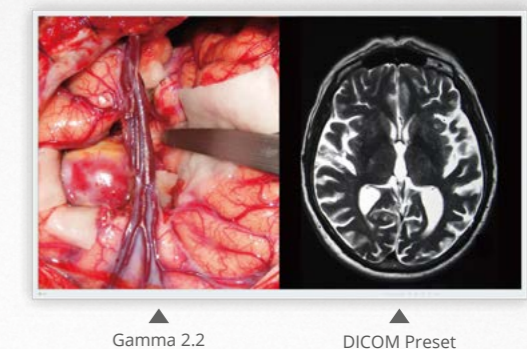


Wide Color Gamut for Distinguishing Tones

During procedures, the operating surgeon needs to be able to differentiate between varying color tones. The 4K UHD monitors of EX-series support the BT.2020 4K video color standard to ensure that subtle differences between shades of reds and yellows captured by BT.2020-supported cameras are distinguishable on the screen.

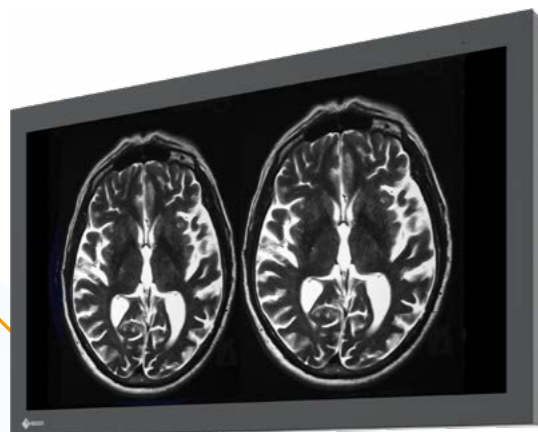
Adjust Screens Independently from Each Other

When displaying two signal sources side by side on the same screen, each image's display mode (gamma 1.8 – 2.6 or DICOM® Preset Mode) can be adjusted without interfering with the other image. This is ideal for multi-modality use, where both endoscope, CT and MRI images can be accurately displayed on the same monitor.



MONITORS FOR OPERATING ROOMS

Large screen monitors allow a flexible and clear display of all required image information. The OR monitors from EIZO are additionally equipped with special safety concepts and durable components and therefore offer the best possible comfort for long-term, stable and reliable use in medical environments. Furthermore, they offer consistently precise image reproduction and optimal display quality.



LX3240-MR
31.5" (80 cm) LCD Monitor
31.5" WIDE 4K



LX1910
19" (48.3 cm) LCD Monitor
19"



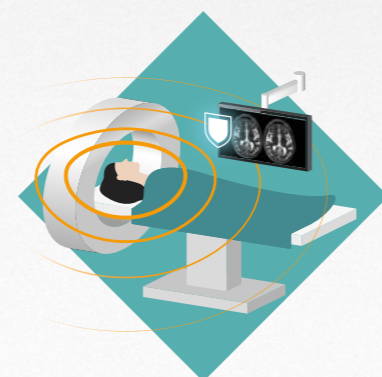
LS580W
57.5" (146 cm) LCD Monitor
57.5" WIDE 4K



LL580W
57.5" (146 cm) LCD Monitor
57.5" WIDE 4K

Consistent Brightness

The monitors have a fully automatic stability system that keeps the brightness consistent according to medical standards such as DICOM or Gamma 2.2. A built-in light sensor in the backlight ensures the monitor maintains its luminance over time.

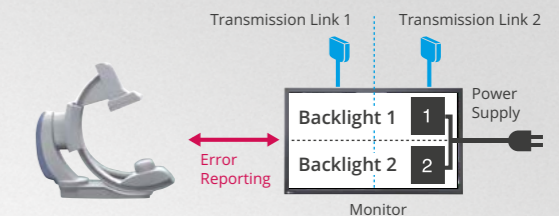
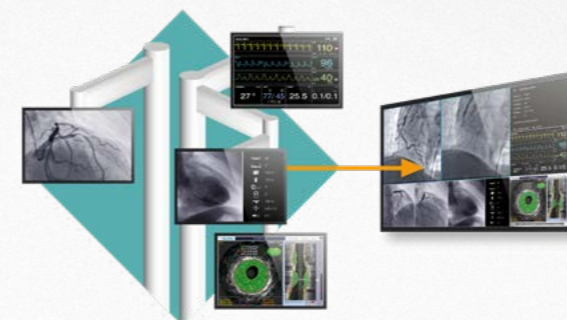


MRI Compatibility

The LX3240-MR is built using special materials to minimize impact on magnetic fields and resonators. Furthermore the monitor is shielded against strong magnetic environments up to 100 mT, allowing it to be placed in proximity to an MRI scanner.

Everything in a Single Glance

Compared to solutions with multiple monitors, there are no regional color differences or obtrusive bezels between individual image sections on large screen monitors with high resolution, so that users can conveniently display important information on a single screen.



Operational Reliability

With its redundant components architecture (2 power supplies, 2 backlights, 2 transmission links), the LS580W ensures a high degree of operational reliability for fail-safe environments. A monitoring function can be configured to notify the imaging system if, for example, operating conditions become critical or a component fails.

VIDEO MANAGEMENT LARGE MONITOR MANAGER

The Large Monitor Managers gather various video inputs, combine and arrange them in accordance with user preferences, and display the resulting output flexibly on the connected monitors.

LMM0802

Large Monitor Manager
12 inputs, 4K monitor



LMM0802-HDM

Large Monitor Manager
8 inputs, 3 x 4K monitors



LMM0804

Large Monitor Manager
12 inputs, 5 x Full HD monitors



LMM56800

Large Monitor Manager
26 inputs, 4K monitor



All Gathered in One to Optimize Workflow

The Large Monitor Managers gather different signal sources and enable you to control them from one location. Users can easily arrange individual image placement and set each window size according to preference for a fully optimized workflow.



Centralized Working Place

Working with the LMM0802 and the LMM0802-HDM, the operator can focus on a single monitor, keyboard and mouse instead of juggling with multiple systems. This speeds up workflow and reduces the potential for handling errors. Alternatively, two independent work spaces can be supported when, for example, there is one person responsible for modality information and one person responsible for PACS.

Local and Remote Control



Layout configuration and layout selection can be performed with a locally attached keyboard and mouse, or via remote browser connected through the web interface. EIZO offers touch screens suitable for the medical environment like the CID1201P to allow users at the surgical table to quickly and conveniently select among the predefined layouts.

Independent Layouts for Multiple Monitors

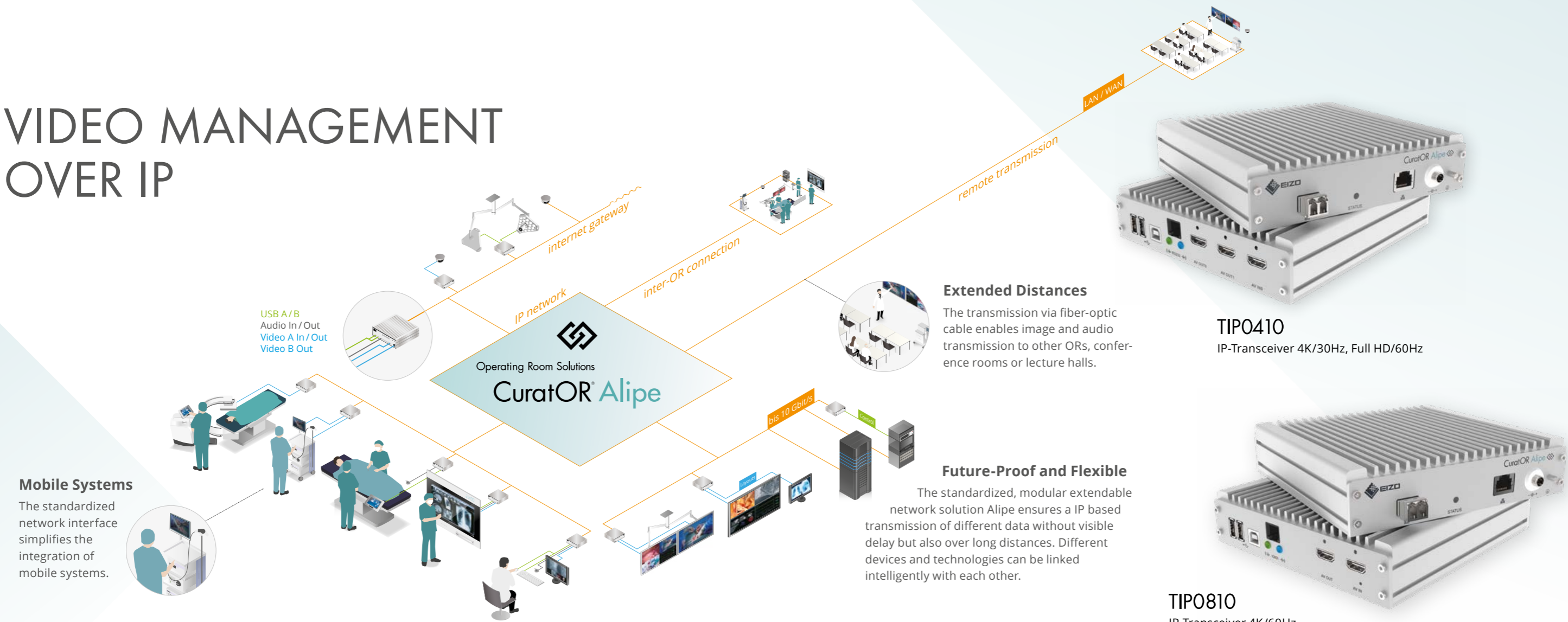
With the LMM0804, up to 8 signal sources can be displayed simultaneously on a maximum of 5 connected monitors. The necessary source information can be selected and displayed independently. This is useful when the surgical staff stands in different positions and needs different information.



Added Inputs and Outputs

For the LMM0802, the LMM0802-HDM and the LMM0804, up to 26 video sources and 14 or 16 additionally connectable monitors are possible when combined with the Extron DMS 2000 Matrix.

VIDEO MANAGEMENT OVER IP



Mobile Systems

The standardized network interface simplifies the integration of mobile systems.

Extended Distances

The transmission via fiber-optic cable enables image and audio transmission to other ORs, conference rooms or lecture halls.



TIP0410

IP-Transceiver 4K/30Hz, Full HD/60Hz

Future-Proof and Flexible

The standardized, modular extendable network solution Alipe ensures a IP based transmission of different data without visible delay but also over long distances. Different devices and technologies can be linked intelligently with each other.

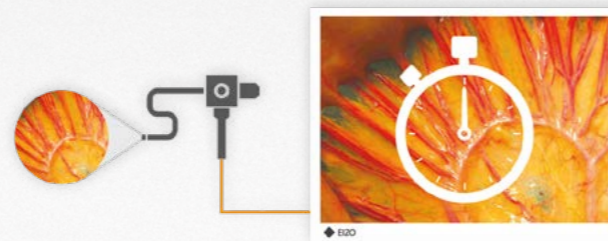


TIP0810

IP-Transceiver 4K/60Hz

Loss-Free Data Transmission with Maximum Image Quality

The Alipe IP-Transceiver allow for a transmission speed of up to 10 Gbit/sec. as well as image transmission of up to 4K resolution and a frame rate of up to 60 Hz. The devices work without compression, ensuring optimum image quality.

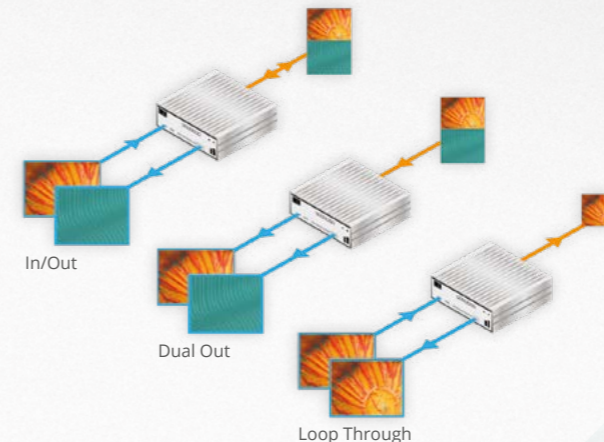


Zero Latency

Images are transmitted with minimal delay at a single frame rate, offering excellent hand-eye coordination for the attending physician. This provides doctors with visual information in real time in response to every action, for example during endoscopic interventions.

Universal Application

The IP-Transceiver can be used as an encoder and decoder. The connector functionality parameters are set through the software so the number of devices and versions can be reduced. Additionally up to two video links can be processed concurrently with one TIP0410.



Graphic: TIP0410



Integrated Video Management

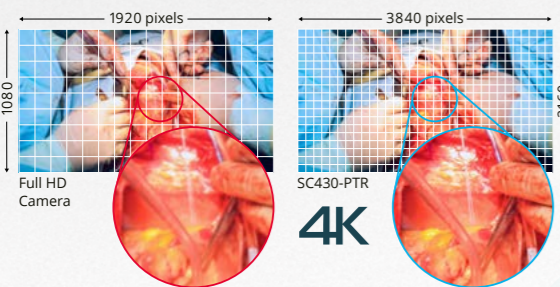
Various video sources can be displayed simultaneously on a screen using a single cable. This enables multiple views such as Side-by-Side, Picture-in-Picture, and QuadView.



SURGICAL FIELD CAMERA SYSTEM

Capturing surgical proceedings in detail is vital for various purposes. The CuratOR SC430-PTR clearly captures the surgical field in 4K UHD resolution and comes fully integrated with a triaxial camera mount for versatile positioning.

SC430-PTR
4K/60p Surgical Field Camera System
4K

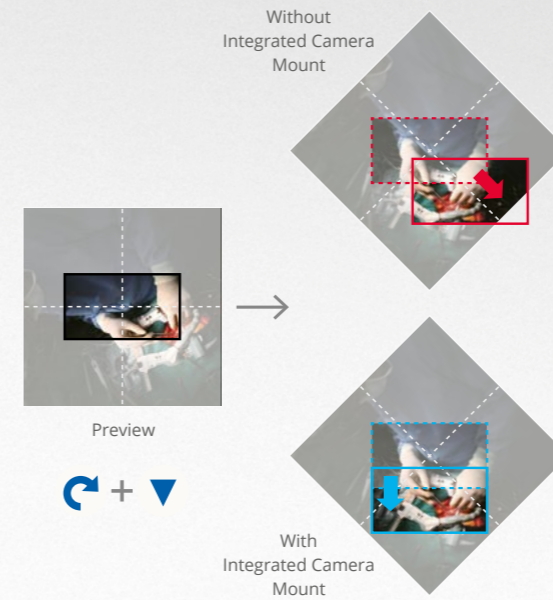
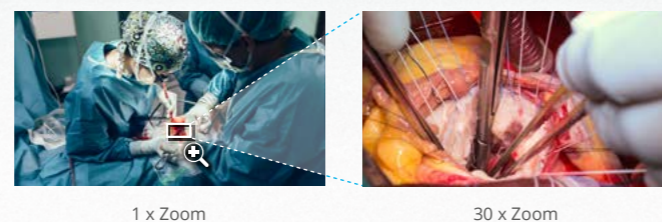


4K Ultra-High Definition Resolution

The surgical field camera captures images in 4K UHD resolution (3840 x 2160) with a progressive 60 Hz signal for smooth, high definition images of the surgical site.

Zoom into Narrow Target Areas in Detail

The camera lens has up to 30x optical zoom, allowing the camera to easily zoom into small, target areas. Even when positioned at a safe distance, the camera can clearly zoom into and capture narrow surgical sites in detail.

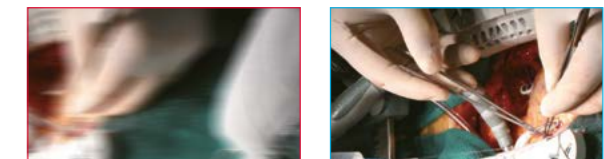
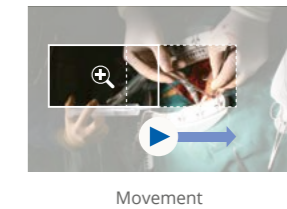


Intuitive Panning and Tilting Direction

The camera head is integrated with the camera mount, allowing left and right, and up and down movements to remain parallel to the field of view, even after rolling. When panning or tilting, the camera head moves in relation to the field of view, rather than the position of the camera head like unintegrated cameras. This ensures intuitive and effortless panning and tilting.

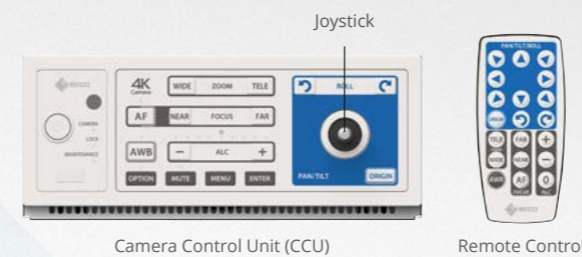
Smooth Positioning at High Zoom

Using unique, intelligent stepping technology, as the camera zooms in, the pan, tilt, and roll movements slow down to prevent the field of view from moving too quickly. With easily controllable movements, even under high zoom, preparation for surgery is made quicker and easier.



Without Stepping

With Stepping



Camera Control Unit (CCU)

Remote Control

Convenient Camera Control from Anywhere

Camera movement, focus, and white balance can be adjusted using the front panel of the Camera Control Unit (CCU), or the supplied wireless remote control. Additionally, the CCU panel comes with a joystick for intuitive control. The camera can also be controlled from OR software, such as CuratOR Caliop.

Fully Integrated Camera Mount

The camera head comes fully integrated on a camera mount with +/-170 degrees pan, +90 to -30 degrees tilt, and +/-165 degrees roll to ensure that the field of view can be adjusted to the ideal location with ease.



SIGNAL ROUTING DEVICES

EIZO also offers flexible and easy-to-install signal routing solutions for use with its monitors and Large Monitor Managers.



PDC0100
Analog-DVI Converter

Analog-Digital Converter

PDC0100 converts analog video signals to digital DVI format. The integrated Force Mode function supports unique analog input signals. With a range of accessories and high interconnectivity, the converter allows maximum flexibility for integration into existing systems.



TID0102
DVI Splitter

Split, Configure, Transmit

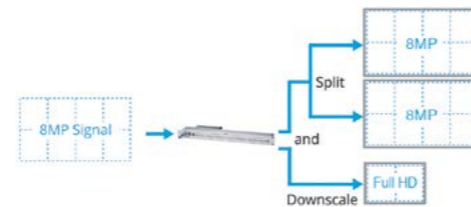
The TID0102 splits the DVI signal from the LMM0804 into two configurable signals. The TID0102-HDL provides additional HDL transmission technology to enable video transmission via traditional CAT cables at a distance of up to 70 m.



PDS0800-HD
DVI Splitter / Scaler

Signal Splitter

By utilizing PDS0800-HD, signals coming from LMM56800 or LMM0802 are repeated and doubled to connect two 8 megapixel monitors. The additional downscale output generates a Full HD representation of the content displayed on the large screen.



LMM0804
(Alternative to LMM0804, any DVI Single Link source possible)



TID0102

DVI

DVI

TID0102

HDL

DVI

HDL

DVI

DVI

DVI

HDL connection
(with TID0102-HDL only)

HDL

HDL connection
(with TID0102-HDL only)

HDL



TDL3600 / TDL2300
DVI Transmission Link

Signal Transmission for a Long Distance

TDL enables transmission of high-quality video data of distances up to 36 meters with no loss in quality. Ethernet cable transmission allows robust handling and simple setup which easily runs through small conduits and holes.



ACCESSORIES

CONNECTION PARTS

Signal Cables and Adapters

EIZO offers a variety of cables and adapters suitable for the signal inputs of the monitors.



Power Cords

Country-specific power cords are available to match local requirements.

SCC500

Short camera cable (5 m) for the operation field camera SC430-PTR.



TDL Components

Different TDL transmitters and receivers, as well as TDL cables of different lengths, are offered in predefined link sets or may be ordered individually in accordance with specific application needs.



ALIFE ACCESSORIES

Network Components

For the compilation of a complete IP transmission solution, network switches and connection components are available.



WALL MOUNTS AND STANDS

Wall Mount

FWM6300

Compatible with monitors from 43" to 58"



Stand

HST01

Compatible with EX2721



HST02

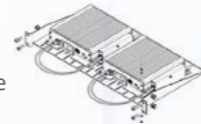
Compatible with EX3220 and EX3220-3D

HST04

Compatible with EX3242 and EX3242-3D

Mounts for Alife

Various brackets allow easy and secure mounting of IP-transceivers on the image source, on the monitor or in a rack.



Holder for 2 DVI Splitter

FMM0102

Compatible with TID0102



PROTECTION SCREEN

FPP5800

Compatible with LS580W and LL580W



GLASSES

H3G01

3D glasses for EX3220-3D and EX3242-3D



SPECIFICATIONS

SURGICAL PANEL



CuratOR Surgical Panel
SP1-24



CuratOR Surgical Panel **4K**
SP1-324K



CuratOR Surgical Panel **4K**
SP1-434K



CuratOR Surgical Panel **4K**
SP1-494K

Model Variations		SP1-24: without touchscreen SP1-24T: with touchscreen	SP1-324K: without touchscreen SP1-324KT: with touchscreen	SP1-434K: without touchscreen SP1-434KT: with touchscreen	SP1-494K: without touchscreen SP1-494KT: with touchscreen
Housing	Material	Powder-coated stainless steel	Powder-coated stainless steel	Powder-coated stainless steel	Powder-coated stainless steel
	Front	Combination of stainless steel and anti-reflective safety glass (ESG)	Combination of stainless steel and anti-reflective safety glass (ESG)	Combination of stainless steel and anti-reflective safety glass (ESG)	Combination of stainless steel and anti-reflective safety glass (ESG)
	Color	Available in every RAL color	Available in every RAL color	Available in every RAL color	Available in every RAL color
	Mounting Options	Suitable for flush mounting or surface mounting	Suitable for flush mounting or surface mounting	Suitable for flush mounting or surface mounting	Suitable for flush mounting or surface mounting
Panel 1	Size	24"	32"	43"	49"
	Diagonal	60.5 cm (16:9 aspect ratio)	80.0 cm (16:9 aspect ratio)	108.0 cm (16:9 aspect ratio)	123.2 cm (16:9 aspect ratio)
	Panel Type	Color TFT LCD Panel	Color TFT LCD Panel with DICOM Preset	Color TFT LCD Panel with DICOM Preset	Color TFT LCD Panel (IPS) with DICOM Preset
	Native Resolution	1920 x 1080 (Full HD)	3840 x 2160 (UHD)	3840 x 2160 (UHD)	3840 x 2160 (UHD)
	Display Colors	16.7 million colors	1.07 billion colors	1.07 billion colors	1.07 billion colors
	Pixel Pitch	0.275 mm x 0.275 mm	0.182 mm x 0.182 mm	0.245 mm x 0.245 mm	0.280 mm x 0.280 mm
	Brightness (typical)	350 cd/m ²	450 cd/m ²	700 cd/m ²	700 cd/m ²
	Contrast Ratio (typical)	1000:1	1300:1	1000:1	1100:1
	Viewing Angles (H/V, maximum)	178°, 178°	178°, 178°	178°, 178°	178°, 178°
	Response Time (typical)	14 ms (Gray-to-Gray)	14 ms (Gray-to-Gray)	9 ms (Gray-to-Gray)	8,0 ms (Gray-to-Gray)
	Backlight	LED	LED	LED	LED
	Signal Inputs	DisplayPort 1.2 x 2, DVI-D single Link, HDMI 1.4, HDMI 2.0 x 2, VGA	DisplayPort 1.2 x 2, DVI-D single Link, HDMI 1.4, HDMI 2.0 x 2, VGA	DisplayPort 1.2 x 2, DVI-D single Link, HDMI 1.4, HDMI 2.0 x 2, VGA	DisplayPort 1.2 x 2, DVI-D single link, HDMI 1.4, HDMI 2.0 x 2, VGA
	Touchscreen		Projected capacitive, multi-touch (SP1-24T only)	Projected capacitive, multi-touch (SP1-324KT only)	Projected capacitive, multi-touch (SP1-434KT only)
ITComponents		INTEL® Core™ i5 processor – 3.x GHz, INTEL® Chipset, 6 MB L3 Cache, 8 GB DDR3 RAM (extendable), SATA HDD or SATA SSD, LAN RJ 45 – 10/100/1000 Base TX	INTEL® Core™ i5 processor – 3.x GHz, INTEL® Chipset, 6 MB L3 Cache, 8 GB DDR3 RAM (extendable), SATA HDD or SATA SSD, LAN RJ 45 – 10/100/1000 Base TX	INTEL® Core™ i5 processor – 3.x GHz, INTEL® Chipset, 6 MB L3 Cache, 8 GB DDR3 RAM (extendable), SATA HDD or SATA SSD, LAN RJ 45 – 10/100/1000 Base TX	INTEL® Core™ i5 processor – 3.x GHz, INTEL® Chipset, 6 MB L3 Cache, 8 GB DDR3 RAM (extendable), SATA HDD or SATA SSD, LAN RJ 45 – 10/100/1000 Base TX
Operating System		MS Windows 10 Pro	MS Windows 10 Pro	MS Windows 10 Pro	MS Windows 10 Pro
Keyboard/Mouse		Anti-microbial medical silicone keyboard with integrated mouse storage (foldable), silicone mouse (visual 5 keys, laser mouse/IP65)	Anti-microbial medical silicone keyboard with integrated mouse storage (foldable), silicone mouse (visual 5 keys, laser mouse/IP65)	Anti-microbial medical silicone keyboard with integrated mouse storage (foldable), silicone mouse (visual 5 keys, laser mouse/IP65)	Anti-microbial medical silicone keyboard with integrated mouse storage (foldable), silicone mouse (visual 5 keys, laser mouse/IP65)
Inputs		USB 2.0/3.0 x 2 (front side)	USB 2.0/3.0 x 2 (front side)	USB 2.0/3.0 x 2 (front side)	USB 2.0/3.0 x 2 (front side)
Push Buttons	Standard	Main switch (front side), System switch (front side)	Main switch (front side), System switch (front side), LUT button (front side), Video input button (front side): DisplayPort 1.2, HDMI 2.0 x 2, HDMI 1.4, VGA, DVI single link, Layout button (front side): PiP, PaP,LR, TB, Quadsplit, Single, Select button (front side)	Main switch (front side), System switch (front side), LUT button (front side), Video input button (front side): DisplayPort 1.2, HDMI 2.0 x 2, HDMI 1.4, VGA, DVI single link, Layout button (front side): PiP, PaP,LR, TB, Quadsplit, Single, Select button (front side)	Main switch (front side), System switch (front side), LUT button (front side), Video input button (front side): DisplayPort 1.2, HDMI 2.0 x 2, HDMI 1.4, VGA, DVI single link, Layout button (front side): PiP, PaP,LR, TB, Quadsplit, Single, Select button (front side)
	VMbasic (optional)	-	-	-	-
Maximum Power Consumption		157.7 W	190.0 W	220.0 W	265.0 W
Power Requirements		100–240 V/50–60 Hz/4–2 A	100–240 V/50–60 Hz/4–2 A	100–240 V/50–60 Hz/4–2 A	100–240 V/50–60 Hz/4–2 A
Thermal Load		567.7 kJ/h	684.0 kJ/h	792.0 kJ/h	954.0 kJ/h
Net Weight		appr. 45 kg	50 kg	70 kg	80 kg
Certifications and Standards (Please contact EIZO for the latest information)		CE, IEC/EN 62368-1, IEC/EN 60601-1-2, RoHS, WEEE, CCC	CE, IEC/EN 62368-1, IEC/EN 60601-1-2, RoHS, WEEE	CE, IEC/EN 62368-1, IEC/EN 60601-1-2, RoHS, WEEE	CE, IEC/EN 62368-1, IEC/EN 60601-1-2, RoHS, WEEE
Dimensions (Unit: mm)	Niche (BxHxT)	860 x 635 x 140	1030 x 695 x 140	1275 x 835 x 140	1410 x 910 x 140
	Device (BxHxT)	850 x 625 x 120	1020 x 685 x 120	1265 x 825 x 120	1400 x 900 x 120

SURGICAL PANEL



CuratOR Surgical Panel **4K**
SP1-554K



CuratOR Surgical Panel **4K**
SP1-654K



CuratOR Surgical Panel
SP2-24-24



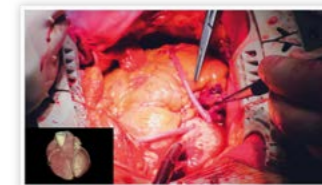
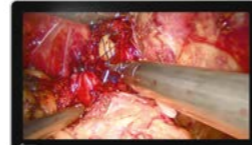
CuratOR Surgical Panel **4K**
SP2-24-494K



CuratOR Surgical Panel **4K**
SP2-24-554K

Model Variations		SP1-554K: without touchscreen SP1-554KT: with touchscreen	SP1-654K: without touchscreen SP1-654KT: with touchscreen	SP2-24-24: without touchscreen SP2-24T-24: with touchscreen (24" left) SP2-24-494K: with touchscreen (24" right) SP2-24T-494KT: with touchscreen (both 24")	SP2-24-494K: without touchscreen SP2-24T-494KT: with touchscreen (24") SP2-24-554K: with touchscreen (49") SP2-24T-554KT: with touchscreen (24", 49")	SP2-24-554K: without touchscreen SP2-24T-554KT: with touchscreen (24") SP2-24-554KT: with touchscreen (55") SP2-24T-554KT: with touchscreen (24", 55")	
Housing	Material	Powder-coated stainless steel	Powder-coated stainless steel	Powder-coated stainless steel	Powder-coated stainless steel	Powder-coated stainless steel	
	Front	Combination of stainless steel and anti-reflective safety glass (ESG)		Combination of stainless steel and anti-reflective safety glass (ESG)	Combination of stainless steel and anti-reflective safety glass (ESG)	Combination of stainless steel and anti-reflective safety glass (ESG)	
	Color	Available in every RAL color		Available in every RAL color	Available in every RAL color	Available in every RAL color	
Mounting Options		Suitable for flush mounting or surface mounting		Suitable for flush mounting or surface mounting	Suitable for flush mounting or surface mounting	Suitable for flush mounting or surface mounting	
Panel 1	Size	55"	65"	24"	24"	24"	
	Diagonal	138.8 cm (16:9 aspect ratio)	163.9 cm (16:9 aspect ratio)	60.5 cm (16:9 aspect ratio)	60.5 cm (16:9 aspect ratio)	60.5 cm (16:9 aspect ratio)	
	Panel Type	Color TFT LCD Panel with DICOM Preset		Color TFT LCD Panel	Color TFT LCD Panel	Color TFT LCD Panel	
	Native Resolution	3840 × 2160 (UHD)		1920 × 1080 (Full HD)	1920 × 1080 (Full HD)	1920 × 1080 (Full HD)	
	Display Colors	1.07 billion colors		16.7 million colors	16.7 million colors	16.7 million colors	
	Pixel Pitch	0.315 mm x 0.315 mm		0.275 mm x 0.275 mm	0.275 mm x 0.275 mm	0.275 mm x 0.275 mm	
	Brightness (typical)	700 cd/m²		350 cd/m²	350 cd/m²	350 cd/m²	
	Contrast Ratio (typical)	1100:1		1000:1	1000:1	1000:1	
	Viewing Angles (H/V, maximum)	178°, 178°		178°, 178°	178°, 178°	178°, 178°	
	Response Time (typical)	8.0 ms (Gray-to-Gray)		8.0 ms (Gray-to-Gray)	14 ms (Gray-to-Gray)	14 ms (Gray-to-Gray)	
	Backlight	LED		LED	LED	LED	
	Signal Inputs	DisplayPort 1.2 x 2, DVI-D single link, HDMI 1.4, HDMI 2.0 x 2, VGA		DisplayPort 1.2 x 2, DVI-D single link, HDMI 1.4, HDMI 2.0 x 2, VGA	DisplayPort 1.2 x 2, DVI-D single link, HDMI 1.4, HDMI 2.0 x 2, VGA	DisplayPort 1.2 x 2, DVI-D single link, HDMI 1.4, HDMI 2.0 x 2, VGA	DisplayPort 1.2 x 2, DVI-D single link, HDMI 1.4, HDMI 2.0 x 2, VGA
	Panel 2	Size	-	-	24"	49"	55"
Diagonal		-	-	60.5 cm (16:9 aspect ratio)	123.2 cm (16:9 aspect ratio)	138.8 cm (16:9 aspect ratio)	
Panel Type		-	-	Color TFT LCD Panel	Color TFT LCD Panel (IPS) with DICOM Preset	Color TFT LCD Panel with DICOM Preset	
Native Resolution		-	-	1920 × 1080 (Full HD)	3840 × 2160 (UHD)	3840 × 2160 (UHD)	
Display Colors		-	-	16.7 million colors	1.07 billion colors	1.07 billion colors	
Pixel Pitch		-	-	0.275 mm x 0.275 mm	0.280 mm x 0.280 mm	0.315 mm x 0.315 mm	
Brightness (typical)		-	-	350 cd/m²	700 cd/m²	700 cd/m²	
Contrast Ratio (typical)		-	-	1000:1	1100:1	1100:1	
Viewing Angles (H/V, maximum)		-	-	178°, 178°	178°, 178°	178°, 178°	
Response Time (typical)		-	-	14 ms (Grey to Grey)	8.0 ms (Gray-to-Gray)	8.0 ms (Gray-to-Gray)	
Backlight		-	-	LED	LED	LED	
Signal Inputs		-	-	DisplayPort 1.2 x 2, DVI-D single link, HDMI 1.4, HDMI 2.0 x 2, VGA	DisplayPort 1.2 x 2, DVI-D single link, HDMI 1.4, HDMI 2.0 x 2, VGA	DisplayPort 1.2 x 2, DVI-D single link, HDMI 1.4, HDMI 2.0 x 2, VGA	
Touchscreen		Projected capacitive, multi-touch (SP1-554KT only)		Projected capacitive, multi-touch (SP2-24T-24T, SP2-24T-24, SP2-24T-24T only)	Projected capacitive, multi-touch (SP2-24T-494K, SP2-24-494KT, SP2-24T-494KT only)	Projected capacitive, multi-touch (SP2-24T-554K, SP2-24-554KT, SP2-24T-554KT only)	
ITComponents		INTEL® Core™ i5 processor – 3.x GHz, INTEL® Chipset, 6 MB L3 Cache, 8 GB DDR3 RAM (extendable), SATA HDD or SATA SSD, LAN RJ 45 – 10/100/1000 Base TX		INTEL® Core™ i5 processor – 3.x GHz, INTEL® Chipset, 6 MB L3 Cache, 8 GB DDR3 RAM (extendable), SATA HDD or SATA SSD, LAN RJ 45 – 10/100/1000 Base TX	INTEL® Core™ i5 processor – 3.x GHz, INTEL® Chipset, 6 MB L3 Cache, 8 GB DDR3 RAM (extendable), SATA HDD or SATA SSD, LAN RJ 45 – 10/100/1000 Base TX	INTEL® Core™ i5 processor – 3.x GHz, INTEL® Chipset, 6 MB L3 Cache, 8 GB DDR3 RAM (extendable), SATA HDD or SATA SSD, LAN RJ 45 – 10/100/1000 Base TX	
Operating System		MS Windows 10 Pro		MS Windows 10 Pro	MS Windows 10 Pro	MS Windows 10 Pro	
Keyboard/Mouse		Anti-microbial medical silicone keyboard with integrated mouse storage (foldable), silicone mouse (visual 5 keys, laser mouse/IP65)		Anti-microbial medical silicone keyboard with integrated mouse storage (foldable), silicone mouse (visual 5 keys, laser mouse/IP65)	Anti-microbial medical silicone keyboard with integrated mouse storage (foldable), silicone mouse (visual 5 keys, laser mouse/IP65)	Anti-microbial medical silicone keyboard with integrated mouse storage (foldable), silicone mouse (visual 5 keys, laser mouse/IP65)	
Inputs		USB 2.0/3.0 x 2 (front side)		USB 2.0/3.0 x 2 (front side)	USB 2.0/3.0 x 2 (front side)	USB 2.0 / 3.0 x 2 (front side)	
Push Buttons	Standard	Main switch (front side), System switch (front side), LUT button (front side),		Main switch (front side), System switch (front side), LUT button (front side),	Main switch (front side), System switch (front side), LUT button (front side)	Main switch (front side), System switch (front side), LUT button (front side),	
	VMbasic (optional)	Video input button (front side); DisplayPort 1.2, HDMI 2.0 x 2, HDMI 1.4, VGA, DVI single link, Layout button (front side); PIP, PaP,LR, TB, Quadsplit, Single, Select button (front side)		Video input button (front side); DisplayPort 1.2, HDMI 2.0 x 2, HDMI 1.4, VGA, DVI single link, Layout button (front side); PIP, PaP,LR, TB, Quadsplit, Single, Select button (front side)	-	Video input button (front side); DisplayPort 1.2, HDMI 2.0 x 2, HDMI 1.4, VGA, DVI single link, Layout button (front side); PIP, PaP,LR, TB, Quadsplit, Single, Select button (front side)	
Maximum Power Consumption		275.0 W		287.0 W	220.0 W	290.0 W	
Power Requirements		100–240 V/50–60 Hz/4–2 A		100–240 V/50–60 Hz/4–2 A	100–240 V/50–60 Hz/4–2 A	100–240 V/50–60 Hz/4–2 A	
Thermal Load		990.0 kJ/h		1033.2 kJ/h	792.0 kJ/h	1044.0 kJ/h	
Net Weight		85 kg		90 kg	100 kg	105 kg	
Certifications and Standards (Please contact EIZO for the latest information.)		CE, IEC/EN 62368-1, IEC/EN 60601-1-2, RoHS, WEEE		CE, IEC/EN 62368-1, IEC/EN 60601-1-2, RoHS, WEEE	CE, IEC/EN 62368-1, IEC/EN 60601-1-2, RoHS, WEEE	CE, IEC/EN 62368-1, IEC/EN 60601-1-2, RoHS, WEEE	
Dimensions (unit: mm)	Niche (BxHxT)	1610 x 1010 x 140	1770 x 1110 x 140	1410 x 635 x 140	2010 x 910 x 140	2155 x 1020 x 140	
	Device (BxHxT)	1600 x 1000 x 120	1760 x 1100 x 120	1400 x 625 x 120	2000 x 900 x 120	2145 x 1010 x 120	

MONITORS



CuratOR
EX2721 **27"**
WIDE

CuratOR
EX3220 **31.5"**
WIDE

CuratOR
EX3242 **32"**
WIDE 4K

CuratOR **3D**
EX3220-3D **31.5"**
WIDE

CuratOR **3D**
EX3242-3D **32"**
WIDE 4K

CuratOR **4K**
EX4342 **43"**
WIDE

CuratOR **4K**
EX4942 **49"**
WIDE

Model Variations	EX2721-WT: without stand	EX3220-WT: without stand	EX3242-WT: without stand	EX3220-3D-WT: without stand	EX3242-3D-WT: without stand	EX4342: without stand	EX4942: without stand	
Cabinet Color	White	White	White	Black (front), white (rear)	Black (front), white (rear)	White	White	
Panel	Type	Color (IPS)	Color (IPS)	Color (IPS)	Color (IPS)	Color (IPS)	Color (IPS)	
	Backlight	LED	LED	LED	LED	LED	LED	
	Size	27.0" (68.6 cm)	31.5" (80.1 cm)	32" (81.3 cm)	31.5" (80.1 cm)	32" (81.3 cm)	43" (109.2 cm)	49" (124.5 cm)
	Native Resolution	1920 x 1080 (16:9 aspect ratio)	1920 x 1080 (16:9 aspect ratio)	3840 x 2160 (16:9 aspect ratio)	1920 x 1080 (16:9 aspect ratio)	3840 x 2160 (16:9 aspect ratio)	3840 x 2160 (16:9 aspect ratio)	3840 x 2160 (16:9 aspect ratio)
	Viewable Image Size (H x V)	598 x 336 mm	698 x 393 mm	708 x 399 mm	698 x 393 mm	708 x 399 mm	941.2 x 529.4 mm	1073.8 x 604 mm
	Pixel Pitch	0.311 x 0.311 mm	0.364 x 0.364 mm	0.185 x 0.185 mm	0.364 x 0.364 mm	0.185 x 0.185 mm	0.2451 x 0.2451 mm	0.279 x 0.279 mm
	Display Colors	10-bit colors (SDI): 1.07 billion colors (maximum), 8-bit colors: 16.77 million colors	10-bit colors (SDI): 1.07 billion colors (maximum), 8-bit colors: 16.77 million colors	10-bit colors (SDI/DisplayPort/HDMI): 1.07 billion colors (maximum), 8-bit colors: 16.77 million colors	10-bit colors (SDI): 1.07 billion colors (maximum), 8-bit colors: 16.77 million colors	10-bit colors (SDI/DisplayPort/HDMI): 1.07 billion colors (maximum), 8-bit colors: 16.77 million colors	10-bit colors (SDI/DisplayPort/HDMI): 1.07 billion colors (maximum), 8-bit colors: 16.77 million colors	10-bit colors (SDI/DisplayPort/HDMI): 1.07 billion colors (maximum), 8-bit colors: 16.77 million colors
	Viewing Angles (H/V, typical)	178°/178°	178°/178°	178°/178°	178°/178° (2D mode)	178°/178° (2D mode)	178°/178°	178°/178°
	Brightness (typical)	900 cd/m ²	650 cd/m ²	850 cd/m ²	650 cd/m ²	850 cd/m ²	700 cd/m ²	700 cd/m ²
	Contrast Ratio (typical)	1000:1	1400:1	1800:1	1500:1	1500:1	1000:1	1100:1
	Response Time (typical)	14 ms (black-white-black)	16 ms (black-white-black)	20 ms (black-white-black)	16 ms (black-white-black)	20 ms (black-white-black)	8 ms (gray-to-gray)	8 ms (gray-to-gray)
Color Gamut (typical)	sRGB	sRGB	BT.2020 emulation	sRGB	BT.2020 emulation	BT.2020 emulation	BT.2020 emulation	
Video Signals	Input Terminals	BNC (3G-SDI), DVI-D x 2 (HDCP 1.4), D-Sub 15 pin (mini), S-Video, BNC (Composite)	BNC (3G-SDI) x 2, DVI-D x 2 (HDCP 1.4), D-Sub 15 pin (mini), BNC (RGB C-Sync or Component), S-Video, BNC (Composite)	DisplayPort (HDCP 1.3), HDMI (HDCP 2.2/1.4), BNC (12G-SDI), BNC (3G-SDI), DVI-D (HDCP 1.4)	BNC (3G-SDI) x 2, DVI-D x 2 (HDCP 1.4), D-Sub 15 pin (mini), BNC (RGB C-Sync or Component), S-Video, BNC (Composite)	DisplayPort (HDCP 1.3), HDMI (HDCP 1.4), BNC (12G-SDI) x 2, DVI-D (HDCP 1.4)	BNC (3G-SDI), BNC (12G-SDI), DVI-D, DisplayPort, HDMI	BNC (3G-SDI), BNC (12G-SDI), DVI-D, DisplayPort, HDMI
	Output Terminals	BNC (3G-SDI), DVI-D, S-Video, BNC (Composite)	BNC (3G-SDI) x 2, DVI-D, BNC (RGB C-Sync or Component), S-Video, BNC (Composite)	DisplayPort, BNC (12G-SDI), DVI-D	BNC (3G-SDI) x 2, DVI-D, BNC (RGB C-Sync or Component), S-Video, BNC (Composite)	DisplayPort, BNC (12G-SDI), DVI-D	BNC (12G-SDI), DVI-D, DisplayPort	BNC (12G-SDI), DVI-D, DisplayPort
	Digital Scanning Frequency (H/V)	15-75 kHz/24-60 Hz	15-75 kHz/24-60 Hz	18-136 kHz/23-71 Hz	15-75 kHz/24-60 Hz	18-136 kHz/23-71 Hz	-	-
	Analog Scanning Frequency (H/V)	15-80 kHz/24-85 Hz	15-80 kHz/24-85 Hz	-	15-80 kHz/24-85 Hz	-	-	-
	Sync Formats	Separate, Composite, Sync on green	Separate, Composite, Sync on green	-	Separate, Composite, Sync on green	-	-	-
Power	Power Input	AC 100-240 V: 50/60 Hz	AC 100-240 V: 50/60 Hz	AC 100-240 V: 50/60 Hz	AC 100-240 V: 50/60 Hz	AC adapter input: 100-240 V: 50-60 Hz Monitor input: DC 48 V, 3.0 A	100-240 V: 50-60 Hz	
	Maximum Power Consumption	79 W	97 W	199 W	97 W	205 W	144 W	
	Power Output	DC 5V, 1A	DC 5V, 1A	DC 5V, 2A	DC 5V, 1A	DC 5V, 2A	DC 5V, 2A	DC 5V, 2A
Features & Functions	Simultaneous Display	Picture-by-Picture (2 PbyP), Picture-in-Picture (PinP)	Picture-by-Picture (2 PbyP), Picture-in-Picture (PinP)	Picture-by-Picture (2 PbyP), Picture-in-Picture (PinP)	Picture-by-Picture (2 PbyP), Picture-in-Picture (PinP)	Picture-by-Picture (2 PbyP), Picture-in-Picture (PinP)	Picture-by-Picture (2 PbyP), Picture-in-Picture (PinP)	
	OSD Languages	English, German, French, Italian, Spanish, Swedish, Japanese, Simplified Chinese, Traditional Chinese	English, German, French, Italian, Spanish, Swedish, Japanese, Simplified Chinese, Traditional Chinese	English, German, French, Spanish, Italian, Swedish, Japanese, Simplified Chinese, Traditional Chinese, Russian, Portuguese	English, German, French, Italian, Spanish, Swedish, Japanese, Simplified Chinese, Traditional Chinese	English, German, French, Spanish, Italian, Swedish, Japanese, Simplified Chinese, Traditional Chinese, Russian, Portuguese	English, German, French, Spanish, Italian, Swedish, Japanese, Simplified Chinese, Traditional Chinese, Russian, Portuguese	English, German, French, Spanish, Italian, Swedish, Japanese, Simplified Chinese, Traditional Chinese, Russian, Portuguese
	Others	Remote control (RS-232C, GPI)	Remote control (RS-232C, GPI)	Remote control (RS-232C), 180° rotation, Mirroring, Optical Bonding	3D (Side by Side, Line by Line, Top and Bottom, SIMUL), Remote control (RS-232C, GPI), Optical Bonding	4K 3D (Side by Side, Line by Line, Top and Bottom, SIMUL), 3D (Side by Side, Line by Line, Top and Bottom, SIMUL), Remote control (RS-232C), 180° rotation, Mirroring, Optical Bonding	Auto Input Detection, Gamma switch, color temperature switch, remote control (RS-232C)	Auto Input Detection, Gamma switch, color temperature switch, remote control (RS-232C)
Physical Specifications	Net Weight	8.5 kg	9.9 kg	13.2 kg	10.2 kg	13.6 kg	17 kg	
	Hole Spacing (VESA Standard)	100 x 100 mm, M4, depth 5-9 mm	200 x 200 mm, M6, depth 7-10 mm/ 100 x 100 mm, M4, depth 5-9 mm	200 x 200 mm, M6, depth 7-12 mm/ 100 x 100 mm, M4, depth 7-11 mm	200 x 200 mm, M6, depth 7-10 mm/ 100 x 100 mm, M4, depth 7-11 mm	200 x 200 mm, M6, depth 7-12 mm/ 100 x 100 mm, M4, depth 7-11 mm	400 x 200 mm, M8, depth 8-15 mm	400 x 200 mm, M8, depth 11-16 mm
Degree of Protection	IP45 (Front), IP32 (Rear)	IP45 (front), IP32 (rear)	IP45 (front), IP32 (rear)	IP45 (front), IP32 (rear)	IP45 (front), IP32 (rear)	IP45 (front), IP32 (rear)	IP45 (front), IP32 (rear)	
Certifications & Standards <small>(Please contact EIZO for the latest information.)</small>	CE/UKCA (Medical Device), ANSI/AAMI ES60601-1, CAN/CSA-C22.2 No. 60601-1, IEC/EN60601-1, VCCI-A, FCC-A, CAN ICES-3(A), RCM, RoHS, China RoHS, WEEE, CCC, EAC, BIS	CE/UKCA (Medical Device), ANSI/AAMI ES60601-1, CAN/CSA-C22.2 No. 60601-1, IEC/EN60601-1, VCCI-A, FCC-A, CAN ICES-3(A), RCM, RoHS, China RoHS, WEEE, CCC, EAC, BIS	CE/UKCA (Medical Device), ANSI/AAMI ES60601-1, CAN/CSA-C22.2 No. 60601-1, IEC/EN60601-1, VCCI-A, FCC-A, CAN ICES-3(A), RCM, RoHS, China RoHS, WEEE, CCC, EAC, BIS	CE/UKCA (Medical Device), ANSI/AAMI ES60601-1, CAN/CSA-C22.2 No. 60601-1, IEC/EN60601-1, VCCI-A, FCC-A, CAN ICES-3(A), RCM, RoHS, China RoHS, WEEE, CCC, EAC, BIS	CE/UKCA (Medical Device), ANSI/AAMI ES60601-1, CAN/CSA-C22.2 No. 60601-1, IEC/EN60601-1, VCCI-A, FCC-A, CAN ICES-3(A), RCM, RoHS, China RoHS, WEEE, CCC, EAC, BIS	CE/UKCA (Medical Device), ANSI/AAMI ES60601-1, CAN/CSA-C22.2 No. 60601-1, IEC/EN60601-1, VCCI-A, FCC-A, CAN ICES-3(A), RCM, RoHS, China RoHS, WEEE, CCC, BIS	CE/UKCA (Medical Device), ANSI/AAMI ES60601-1, CAN/CSA-C22.2 No. 60601-1, IEC/EN60601-1, VCCI-A, FCC-B, CAN ICES-3(B), RCM, RoHS, China RoHS, WEEE, CCC	
FDA	Class I	Class I	Class I	Class I	Class I	Class I	Class I	
Supplied Accessories <small>(May vary by country. Please contact EIZO for details.)</small>	AC power cord, AC adapter, screws for VESA adapter x 4, cable cover, Utility Disk (PDF installation manual), instructions for use	AC power cord, AC adapter, screws for VESA adapter x 8, cable cover, Utility Disk (PDF installation manual), instructions for use	AC power cord, AC adapter, screws for VESA adapter x 8, cable cover, Utility Disk (PDF installation manual), instructions for use	AC power cord, AC adapter, screws for VESA adapter x 8, 3D fogless polarized glasses x 3, cable cover, Utility Disk (PDF installation manual), instructions for use	AC power cord, AC adapter, 3D fogless polarized glasses x 3, screws for VESA adapter x 8, cable cover, Utility Disk (PDF installation manual), instructions for use	AC power adapter, cable cover, monitor attachment screws x 4, cable tie x 2, Utility Disk (Instructions for Use, Installation Manual)	Cable cover, monitor attachment screws x 4, cable tie x 2, Utility Disk (Instructions for Use, Installation Manual)	
Dimensions (Unit: mm)								
Connectors								

MONITORS



CuratOR EX5542 **55" WIDE** 4K



CuratOR EX5841 **57.5" WIDE** 4K



CuratOR LX1910 **19"**



CuratOR LX3240-MR **31.5" WIDE** 4K



RadiForce LS580W **57.5" WIDE** 4K



RadiForce LL580W **57.5" WIDE** 4K

Model Variations	EX5542: without stand	EX5841: without stand	LX1910: without stand LX1910-S: with stand	LX3240-MR: without stand	LS580W: without stand	LL580W: without stand	
Cabinet Color	White	White	Black	Black	Black	Black	
Panel	Type	Color (IPS)	Color	Color	Color (IPS)	Color	
	Backlight	LED	LED	LED	LED	LED	
	Size	55" (139.7 cm)	57.5" (146 cm)	19" (48 cm)	31.5" (80 cm)	57.5" (146 cm)	57.5" (146 cm)
	Native Resolution	3840 x 2160 (16:9 aspect ratio)	3840 x 2160 (16:9 aspect ratio)	1280 x 1024 (5:4 aspect ratio)	3840 x 2160 (16:9 aspect ratio)	3840 x 2160 (16:9 aspect ratio)	3840 x 2160 (16:9 aspect ratio)
	Viewable Image Size (H x V)	1209.6 x 680.4 mm	1270 x 721 mm	376.3 x 301.0 mm	697.3 x 392.2 mm	1270.1 x 721.4 mm	1270.1 x 721.4 mm
	Pixel Pitch	0.315 x 0.315 mm	0.331 x 0.334 mm	0.294 x 0.294 mm	0.181 x 0.181 mm	0.331 x 0.334 mm	0.331 x 0.334 mm
	Display Colors	10-bit colors (SDI/DisplayPort/HDMI): 1.07 billion colors (maximum), 8-bit colors: 16.77 million colors	10-bit colors (SDI/DisplayPort): 1.07 billion colors (maximum), 8-bit colors: 16.77 million from a palette of 68 billion colors	8-bit colors: 16.77 million colors	10-bit colors: 1.07 billion colors	8-bit colors: 16.77 million colors	8-bit colors: 16.77 million colors
	Viewing Angles (H / V, typical)	178°/178°	178°/178°	178°/178°	178°/178°	176°/176°	178°/178°
	Brightness (typical)	700 cd/m ²	300 cd/m ² (calibrated)	700 cd/m ²	1000 cd/m ²	700 cd/m ²	500 cd/m ²
	Recommended Brightness for Calibration	-	-	400 cd/m ²	400 cd/m ²	350 cd/m ²	380 cd/m ²
	Contrast Ratio (typical)	1100:1	1000:1 (calibrated)	1000:1	1300:1	4000:1	5000:1
	Response Time (typical)	8 ms (gray-to-gray)	9.5 ms (Midtone)	13 ms rising, 12 ms falling	14 ms (midtone)	9.5 ms (midtone)	9.5 ms (midtone)
	Color Gamut (typical)	BT.2020 emulation	NTSC 88%, BT.2020 emulation	-	-	NTSC 72%	NTSC 88%
Video Signals	Input Terminals	BNC (3G-SDI), BNC (12G-SDI), DVI-D, DisplayPort, HDMI	DisplayPort, HDMI, DVI-D Single Link, BNC (12G-SDI)	DisplayPort, DVI-I (digital and analog RGBHV)	DisplayPort 1.2, DisplayPort 1.1 (Full HD), HDMI (DVI signal Full HD) x 2	DVI-D (dual link) x 2	
	Output Terminals	BNC (12G-SDI), DVI-D, DisplayPort	BNC (12G-SDI)	-	-	-	
	Digital Scanning Frequency (H / V)	-	-	30 - 100 kHz/50-85 Hz	131.3 kHz/60 Hz	131.3 kHz/59.7-60.3 Hz	132 kHz/59.7-60.3 Hz
	Analog Scanning Frequency (H / V)	-	-	30 - 100 kHz/50-85 Hz	-	-	-
	Sync Formats	-	-	Separate, Composite, Sync on green	-	-	-
USB	Upstream	-	USB 2.0: Type-B	USB 2.0: Type-B	-	-	
	Downstream	-	USB 2.0: Type-A x 2	USB 2.0: Type-A	USB 2.0: Type-A x 2	-	
Power	Power Requirements	100-240 V: 50-60 Hz	AC 100-240 V: 50/60 Hz	AC 100-240 V: 50/60 Hz	AC adapter: 100-240 V: 50-60 Hz Monitor: 24 VDC, 6 A	AC 100-240 V: 50/60 Hz	AC 100-240 V: 50/60 Hz
	Maximum Power Consumption	170 W	200 W	45 W	130 W	350 W	155 W
	Typical Power Consumption	-	130 W	-	-	-	-
	Power Save Mode	-	0 W (power switch off), < 20 W (external power off), < 35 W (external power on)	Less than 2 W	20 W (DMPM mode)	Less than 38 W	Less than 30 W
	Power Management	-	DMPM	Digital: DVI DMPM, Analog: VESA DPM	DMPM	DVI DMPM	DVI DMPM
Power Output	DC 5V, 2A	DC 5V x 2, 1A	DC 5V, 1A (Hirose)	DC 5V, 1A (Hirose)	DC 5V, 1A (Hirose)	-	
Sensor	-	-	Backlight Sensor	Backlight Sensor	Backlight Sensor	Backlight Sensor	
Features & Functions	Simultaneous Display	Picture-by-Picture (2 PbyP), Picture-in-Picture (PiP)	Picture-in-Picture (PiP), Picture-and-Picture (PaP), Triple Source	-	-	-	
	OSD Languages	English, German, French, Spanish, Italian, Swedish, Japanese, Simplified Chinese, Traditional Chinese, Russian, Portuguese	English	English, German	English	-	
	Others	Auto Input Detection, Gamma switch, color temperature switch, remote control (RS-232C)	-	Prioritised input (DVI-A) for emergency signal	Cal-Switch, resistance to magnetic fields up to 100 mT	Redundant components (power supply, backlight, data transmission)	-
	Net Weight (Without Stand)	29.3 kg	45 kg	LX1910: 4.3 kg LX1910-S: 6.1 kg	17.2 kg	47 kg	42 kg
Hole Spacing (VESA Standard)	400 x 200 mm, M8, depth 11-16 mm	400 x 400 mm and 400 x 200 mm, M8, depth 16-20 mm	100 x 100 mm, M4, depth 5-10 mm	100 x 100 mm and 200 x 100, M4, depth 5-10 mm	400 x 400 mm, M8, depth 16-20 mm	400 x 400 mm, M8, depth 16-20 mm	
Degree of Protection	IP45 (front), IP32 (rear)	IP45 (front), IP32 (rear)	IP20	IP20	IP20	IP20	
Certifications & Standards (Please contact EIZO for the latest information.)	CE/UKCA (Medical Device), ANSI/AAMI ES60601-1, CAN/CSA-C22.2 No. 60601-1, IEC/EN 60601-1, VCCI-B, FCC-B, CAN ICES-3(B), RCM, RoHS, China RoHS, WEEE, CCC	CE/UKCA (Medical Device), IEC/EN60601-1, CAN/CSA C22.2 No. 601.1, ANSI/AAMI ES60601-1, EN60601-1-2 Class B, FCC-B, RCM, RoHS, China RoHS, WEEE, CCC, BIS	CE/UKCA (Medical Device), IEC/EN60601-1, CAN/CSA C22.2 No. 60601-1, ANSI/AAMI ES60601-1, EN60601-1-2 Class B, FCC-B, RoHS, China RoHS, WEEE, CCC, BIS	CE/UKCA (Medical Device), IEC/EN60601-1, CAN/CSA C22.2 No. 60601-1, ANSI/AAMI ES60601-1, EN60601-1-2 Class B, FCC-B, RoHS, WEEE	CE/UKCA (Medical Device), IEC/EN60601-1, CAN/CSA C22.2 No. 60601-1, ANSI/AAMI 60601-1, EN60601-1-2 Class B, FCC-B, RCM, RoHS, China RoHS, WEEE, CCC, BIS	CE/UKCA (Medical Device), IEC/EN60601-1, CAN/CSA C22.2 No. 60601-1, EN60601-1-2 Class B, ANSI/AAMI 60601-1, FCC-B, RCM, RoHS, China RoHS, WEEE, CCC, BIS	
FDA	Class I	Class I	-	-	Class II	-	
Supplied Accessories (May vary by country. Please contact EIZO for details.)	Cable cover, monitor attachment screws x 4, cable tie x 2, Utility Disk (Instructions for Use, Installation Manual)	Screws for VESA adapter x 4 (preassembled), CD-ROM (Instructions for Use, Installation Manual)	Adapter (D-Sub - DVI), adapter (BNC - D-Sub), Utility Disk (PDF Instructions for Use)	AC adapter + cable (15 m), Utility Disk (PDF Instructions for Use)	Dual link signal cable (DVI-D - DVI-D) x 2, Utility Disk (PDF Instructions for Use)	Dual link signal cable (DVI-D - DVI-D) x 2, Utility Disk (PDF Instructions for Use)	
Dimensions (unit: mm)							
Connectors							

VIDEO-MANAGEMENT



LMM56800
Large Monitor Manager



LMM0802
Large Monitor Manager



LMM0802-HDM
Large Monitor Manager



LMM0804
Large Monitor Manager

EX3220, EX3220-3D	-	✓	✓	✓	
EX3242-3D	-	✓	✓	✓	
EX3242, EX4342, EX4942, EX5542	-	✓	✓	✓	
EX5841	-	✓	✓	✓	
LX1910	-	✓	✓	✓	
LS580W, LL580W, LX3240-MR	✓	✓	✓	✓	
EV3285 ^a , EV2760 ^a , EV2750 ^a	-	✓	✓	✓	
MS236WT ^b , MX315W ^b	-	✓	✓	✓	
Cabinet Color	Black (front), silver (rear)	Black	Black	Black	
Video Signals	Input Terminals	Digital: HDMI connectors (DVI signals only) x 17, DVI-D x 3 Analog (high speed): 15-pol D-Sub x 3 Analog (standard): 15-pol D-Sub x 3 26 simultaneous visible inputs	Digital: HDMI connectors (DVI signals only) x 6, Digital / Analog: DVI-I x 2, Analog: D-Sub mini 15 pin x 2, mini DIN x 2, 8 simultaneous visible inputs (in 16 windows maximum)	HDMI connectors (DVI signals only) x 8, 8 simultaneous visible inputs (in 16 windows maximum)	Digital: HDMI connectors (DVI signals only) x 6, Digital / Analog: DVI-I x 2, Analog: D-Sub mini 15 pin x 2, mini DIN x 2, 8 simultaneous visible inputs
	Input Performance	Digital: DVI (single link), 1920 x 1200, 60 Hz (165 MHz pixelclock), non-interlaced Analog (high speed): 1920 x 1200, 60 Hz (170 MHz pixelclock), non-interlaced Analog (standard): 1280 x 1024, 75 Hz (135 MHz pixelclock), non-interlaced	Digital: DVI-D (single link), 1920 x 1200 maximum, 60 Hz or 2048 x 1536, 30 Hz (165 MHz pixelclock maximum, horizontal size 2048 maximum), Analog: DVI-I, VGA, 1920 x 1200 maximum, 60 Hz (170 MHz pixelclock maximum, horizontal size 1920 maximum), S-Video (PAL/NTSC), SoG	DVI-D (single link), 1920 x 1200 maximum, 60 Hz or 2048 x 1536, 30 Hz (165 MHz pixelclock maximum, horizontal size 2048 maximum)	Digital: DVI-D (single link), 1920 x 1200 maximum, 60 Hz or 2048 x 1536, 30 Hz (165 MHz pixelclock maximum, horizontal size 2048 maximum) Analog: DVI-I, VGA, 1920 x 1200 maximum, 60 Hz (170 MHz pixelclock maximum, horizontal size 1920 maximum), S-Video (PAL/NTSC), SoG
	Output Terminals	DVI-D (dual link) x 2 (via DisplayPort to DVI converter x 2)	DVI-D (dual link) x 2, HDMI connector (DVI single link signal only, scaler output)	DVI-D (dual link) x 2, HDMI 2.0 x 2, HDMI (DVI single link signals, scaler output)	DVI-D (Dual Link) x 2 (connection of 2 monitors each: TID0102 or TDL Link Set needed), HDMI connector (DVI single link signal only)
	Output Performance	4MP x 2 (1920 x 2160 x 2, 60 Hz) Output format: 8MP (3840 x 2160, 60 Hz)	Single Workspace (all outputs with same picture content): 8MP: DVI-DL x 2 [Monitor 1/2] (1920 x 2160, 60 Hz) equate to 3840 x 2160, 60 Hz, HDMI 1.1 [Monitor 3] (firmly scaled to 1920 x 1080, 60 Hz) or 8MP: DVI-DL x 2 [Monitor 1/2] (2048 x 2160, 60 Hz) equate to 4096 x 2160, 60 Hz, Dual Workspace (two outputs each with same picture content): DVI-DL [Monitor 1] (2560 x 1600, 60 Hz or 2560 x 1440, 60 Hz or 1920 x 1080, 60 Hz or 3840 x 2160, 30 Hz), DVI-DL [Monitor 2] (same resolution as [Monitor 1])	Single Workspace (all outputs with same picture content): 8MP: DVI-DL x 2 [Monitor 1/2] (1920 x 2160, 60 Hz) equate to 3840 x 2160, 60 Hz, HDMI 2.0 [Monitor 5] (3840 x 2160, 60 Hz), HDMI 1.1 [Monitor 3] (firmly scaled to 1920 x 1080, 60 Hz) or 8MP: DVI-DL x 2 [Monitor 1/2] (2048 x 2160, 60 Hz) equate to 4096 x 2160, 60 Hz, HDMI 2.0 [Monitor 5] (4096 x 2160, 60 Hz), HDMI 2.0 [Monitor 4] (freely scalable up to 4096 x 2160, 60 Hz) Dual Workspace (two outputs each with same picture con- tent): DVI-DL [Monitor 1] (2560 x 1600, 60 Hz or 2560 x 1440, 60 Hz) HDMI 2.0 [Monitor 5] (same resolution as [Monitor 1]), DVI-DL [Monitor 2] (same resolution as [Monitor 1]), HDMI 2.0 [Monitor 4] (same resolution as [Monitor 1]), Monitor 5 duplicates Monitor 1, Monitor 4 duplicates Monitor 2	4 x 2.3MP (1920 x 1200, 60 Hz)/4 x FHD (1920 x 1080, 60 Hz)/ 4 x 2MP (1600 x 1200, 60 Hz) / 4 x 1MP (1280 x 1024, 60 Hz)/ 4 x (1368 x 768, 60 Hz) (all connected monitors have to have the same resolution) HDMI connector: 1 x FHD (1920 x 1080, 60 Hz)
Operation with Extron Matrix*	Input Terminals	-	Additionally: DVI-D (single link, digital) x 16 (max.)	Additionally: DVI-D (single link, digital) x 16 (max.)	Additionally: DVI-D (single link, digital) x 16 (max.)
	Input Performance	-	Additional inputs: up to 2.3MP (1920 x 1200, 60 Hz)	Additional inputs: up to 2.3MP (1920 x 1200, 60 Hz)	Additional inputs: up to 2.3MP (1920 x 1200, 60 Hz)
	Output Terminals	-	Additionally: DVI-D (single link) x 16 (max.)	Additionally: DVI-D (single link) x 16 (max.)	Additionally: DVI-D (single link) x 16 (max.)
	Output Performance	-	Additional outputs: up to 2.3MP (1920 x 1200, 60 Hz)	Additional outputs: up to 2.3MP (1920 x 1200, 60 Hz)	Additional outputs: up to 2.3MP (1920 x 1200, 60 Hz)
Communication Connector	Ethernet (RJ45)	Ethernet (RJ45)	Ethernet (RJ45)	Ethernet (RJ45)	
USB Ports	Upstream	-	USB 2.0: type-B x 8 (for control of video applications on PC)	USB 2.0: type-B x 8 (for control of video applications on PCs)	USB 2.0: type-B x 8 (for control of video applications on PC)
	Downstream	-	USB 2.0: type-A x 6 (e.g. for keyboard, mouse)	USB 2.0: type-A x 6 (e.g. for keyboard, mouse)	USB 2.0: type-A x 6 (e.g. for keyboard, mouse)
Power	Power Requirements	AC 100-240 V; 5-2.5 A; 50-60 Hz Redundancy: 2 independent power supplies, hot swap capable	AC 100-120 V, 200-240 V: 50/60 Hz	AC 100-120 V, 200-240 V: 50/60 Hz	AC 100-120 V, 200-240 V: 50/60 Hz
	Power Consumption	340 W (typ.)	100 W (max.), Extron Matrix: 116 W (max.)	110 W (including external load of 40 W), Extron Matrix: 116 W (max.)	100 W (max.), Extron Matrix: 116 W (max.)
OSD Languages	-	English, German, French, Japanese, Chinese*	English, German, French, Japanese, Chinese	English, German, French, Japanese, Chinese*	
Physical Specification	Net Weight	18 kg (incl. converting modules and Y-cables)	5.3 kg, Extron Matrix: 8.5 kg	5.3 kg, Extron Matrix: 8.5 kg	5.5 kg, Extron Matrix: 8.5 kg
	Mechanical Installation	19" rack design, 4 RU	19" rack design, 2 RU Extron Matrix: 3 RU	19" rack design, 2 RU Extron Matrix: 3 RU	19" rack design, 2 RU Extron Matrix: 3 RU
Degree of Protection	IP20	IP20	IP20	IP20	
Controls and Status	Software control interface for layout, status and diagnosis, LED Indicators for power supplies	Graphical user interface and software control interface for operating, status and diagnosis, LED indicators for hardware status x 2	Graphical user interface and software control interface for operating, status and diagnosis, LED indicators for hardware status x 2	Graphical user interface and software control interface for operating, status and diagnosis, LED indicators for hardware status x 2	
Certifications and Standards (Please contact EIZO for the latest information)	CE, IEC/EN 62368-1, UL/CSA 62368, RCM, RoHS, China RoHS, WEEE	CE/UKCA, IEC/EN60601-1, CAN/CSA-C22.2 No. 60601-1, ANSI/AAMI ES60601-1, IEC/EN 62368-1, CAN/CSA C22.2 No. 62368-1:2014 / UL62368:2014, EN55032 Class B, RCM, RoHS, China RoHS, WEEE, CCC	CE/UKCA, IEC/EN60601-1, CAN/CSA-C22.2 No. 60601-1, ANSI/AAMI ES60601-1, IEC/EN 62368-1, CAN/CSA C22.2 No. 62368-1:2014 / UL62368:2014, EN55032 Class B, RoHS, WEEE	CE/UKCA, IEC/EN60601-1, CAN/CSA-C22.2 No. 60601-1, ANSI/AAMI ES60601-1, IEC/EN 62368-1, CAN/CSA C22.2 No. 62368-1:2014 / UL62368:2014, EN55032 Class B, RCM, RoHS, China RoHS, WEEE, CCC	
Supplied Accessories	AC power cord (us, en), converter modules (DisplayPort - DVI) x 2, holder for converter modules, Y-cables x 3, Utility Disk (PDF Instructions for Use)	Adapter cables (HDMI - DVI) x 6, mounting brackets, screws x 2, Utility Disk (PDF Instructions for Use, test patterns) Extron Matrix: AC power cord (eu) and manual, power cable (jp) 2 m, adapter cable (RS232 - USB) 2 m, installation manual	Adapter cables (HDMI - DVI) x 8, mounting brackets, screws x 2, Utility Disk (PDF Instructions for Use, test patterns) Extron Matrix: AC power cord (eu) and manual, power cable (jp) 2 m, adapter cable (RS232 - USB) 2 m, installation manual	Adapter cable (HDMI - DVI) x 6, mounting brackets for rack or wall mount, screws x 4, Utility Disk (PDF Instructions for Use, test patterns) Extron Matrix: AC power cord (eu) and manual, power cable (jp) 2 m, adapter cable (RS232 - USB) 2 m, installation manual	
Dimensions (Unit: mm)					

a) EIZO FlexScan series b) EIZO RadiForce series * Software version 4.0.0 or later

CAMERA SYSTEM



SC430-PTR
4K/60p Surgical Field Camera System

Camera Head	Image Sensor	1/2.5 type CMOS, single chip type
	Effective Pixels	3840 x 2160
	Zoom	Optical 30x motorized zoom
	Focal Length (f=)	4.6 (W)-135 (T) mm
	Horizontal Field of View (HFOV)	68 (W)-2.6 (T) °
	Minimum Object Distance (MOD)	1500 mm (throughout the zoom range) 1000 mm (with close-up lens)
	Filter Diameter	72 mm
	Focus Control	Auto, Manual
	Iris Control	Auto, Manual
	Pan Range	+/-170 °
Tilt Range	+90 °/-30 °	
Roll Range	+/-165 °	
Pan Speed	8.6-0.05 °/s, 7 steps	
Tilt Speed	8.6-0.05 °/s, 7 steps	
Roll Speed	30-0.2 °/s, 7 steps	
Built-in microphone	Yes	
Features and Functions	Image Control	Auto Level Control (ALC), Center Weighting Metering, BT.2020 Emulation, White Balance, Sharpness
	Gain	Auto, Manual (0-45 db)
	Shutter Speed	[59.94 Hz output] 1/60-1/10000 [50 Hz output] 1/50-1/10000
	Picture Flip	Normal, Flip
Video Format	4K UHD	HDMI: 2160/59.94p, 2160/50p SDI: 2160/59.94p, 2160/50p
	FHD	HDMI: 1080/59.94p, 1080/59.94i, 1080/50p, 1080/50i SDI: 1080/59.94p, 1080/59.94i, 1080/50p, 1080/50i
General	Output Terminals	HDMI x 2, BNC (Quad Link 3G-SDI), BNC (3G-SDI), Audio
	Remote Control	LAN, RS-232C, IR remote
	Power Requirements	DC 24 V (bundled AC adapter)
	Maximum Power Consumption	55 W
	Net Weight	Camera Head and Mount: 3.1 kg (with cable cover), Camera Control Unit: 2.9 kg
	Hole Spacing	Camera Mount: 100 x 100 mm
	Operating Temperature	Camera Head and Mount: 0-40°C Camera Control Unit: 0-40°C
	Operating Humidity	20-80%RH
	Certifications & Standards	IEC60601-1, CE, CB, FCC-A, CAN ICES-3 (A), RoHS, WEEE
	Supplied Accessories	AC adapter, AC power cord (2 m), camera cable (25 m), IR remote, rubber feet x 4, ND filter, close-up lens, cable cover, thread-locking fluid, Instructions for Use, Quick Reference Guide
Dimensions (unit: mm)		

VIDEO MANAGEMENT OVER IP



TIPO410
IP-Transceiver



TIPO810
IP-Transceiver

Cabinet Color	Silver	Silver
Network		
Data Rate	10 Gbit/s	10 Gbit/s
Connector	SFP+ (10 GbE, optional SFP+ module)	SFP+ (10 GbE, optional SFP+ module)
Cable	LWL duplex LC/LC (SFP+ module necessary)	LWL duplex LC/LC (SFP+ module necessary)
Video Signale		
Input Resolution	Up to FHD (1920 x 1200), 1 x uncompressed, 60 Hz and 30 Hz, progressive and interlaced Up to 4K (3840 x 2160), 1 x uncompressed, 30 Hz	Up to 4K (3840 x 2160), 1 x uncompressed, 60 Hz
Output Resolution	Up to FHD (1920 x 1200), 2 x uncompressed, 60 Hz and 30 Hz, progressive Up to 4K (3840 x 2160), 1 x uncompressed, 30 Hz	Up to 4K (3840 x 2160), 1 x uncompressed, 60 Hz
Interface	HDMI 1.4 (in), HDMI 1.4 x 2 (out/ loop through)	HDMI 2.0 (in), HDMI 2.0 (out)
Modes	Single In/Single Out (up to 4K/30Hz) In/Out (up to 4K/30Hz) Dual Out (up to FHD) Loop Through (up to 4K/30Hz)	Single In/Single Out (up to 4K/60Hz)
Multiview	Side-by-Side, Picture-in-Picture, QuadView, Matrix View 3+1 and 1+3 right	Side-by-Side, Picture-in-Picture, QuadView
Connectors		
Audio	Audio jack x 2 (in/out)	Audio jack x 2 (in/out)
USB Ports	USB/A x 2, USB/B	USB/A x 2, USB/B
Control	Mouse and keyboard control	Mouse and keyboard control
Power Consumption	17 W, optional: 5 W (for USB), passive cooling	17 W, optional: 5 W (for USB), passive cooling
Power Requirements	External power supply, 230 AC	External power supply, 230 AC
Net Weight	1050 g	1050 g
Certifications and Standards (Please contact EIZO for the latest information)	CE, IEC/EN 62368-1, tested for IEC60601-1-2, RoHS, Reach, WEEE	CE, IEC/EN 62368-1, getestet für IEC60601-1-2, RoHS, Reach, WEEE
Optional Accessories	Optical module (SFP+ 10G LC), power supply, connection and mounting accessories	Optical module (SFP+ 10G LC), power supply, connection and mounting accessories
Dimensions (Unit: mm)		

SIGNAL ROUTING



PDC0100
Analog-DVI Converter



PDS0800-HD
DVI Splitter / Scaler



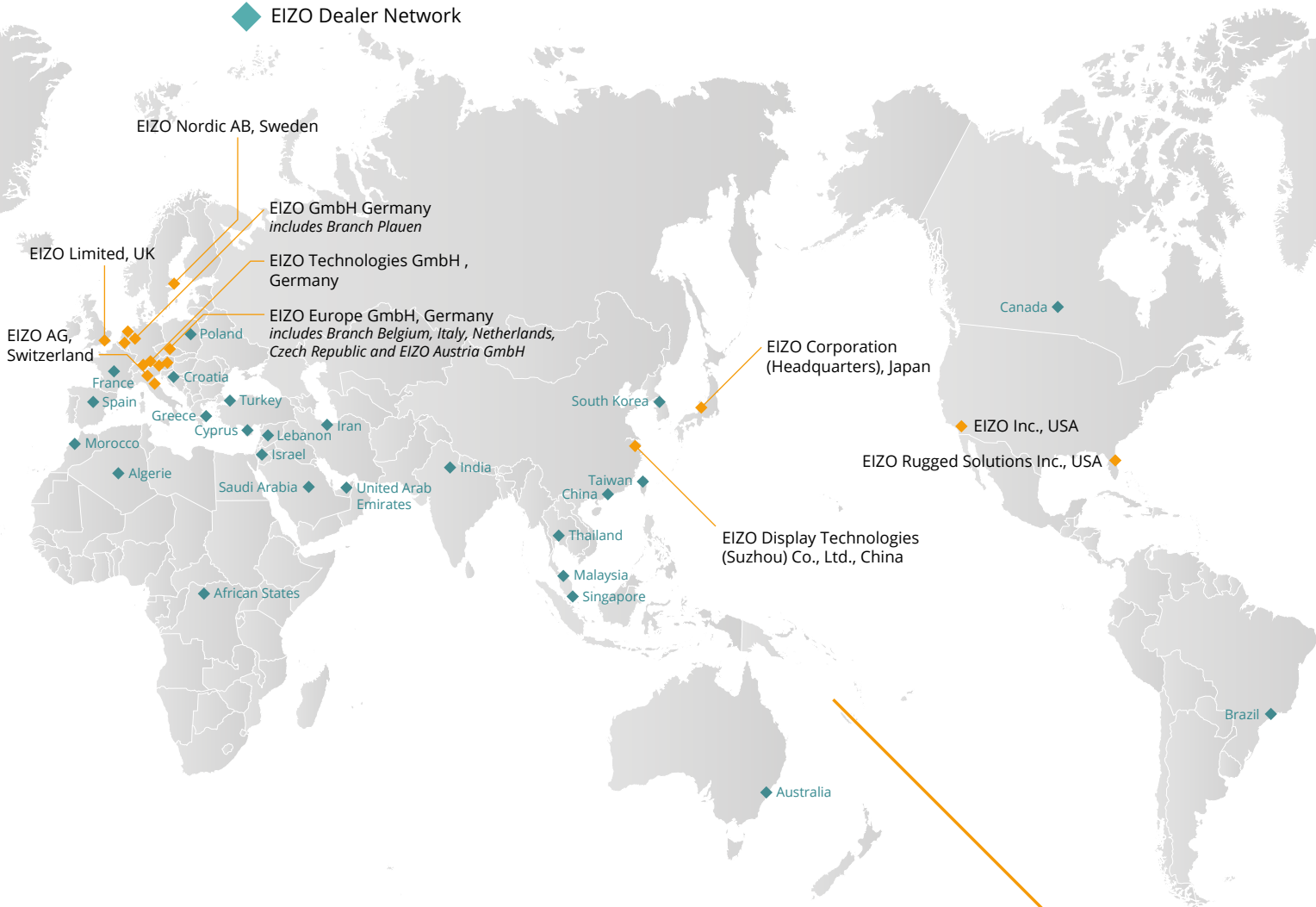
TID0102
DVI Splitter



TDL3600 / TDL2300
DVI Transmission Link

Model Variations	-	-	TID0102-DVI: DVI-Splitter TID0102-HDL: With additional HDL outputs	TDL3600-QL: quad link, 36m TDL3600-DL: dual link, 36m TDL3600-SL: single link, 36m TDL2300-SL: single link, 23m
Cabinet Color	Black	Light Gray	Black	Silver
Input Terminals	DVI-I (digital: DVI, analog: RGB), D-Sub mini 15 pin (Separate, Composite, SoG), BNC (Composite, PAL, NTSC), 4 pin mini DIN (S-Video)	DVI-D (dual link) x 2 (A+B)	DVI	TDL3600-QL: DVI-D (dual link) x 2 TDL3600-DL: DVI-D (dual link) TDL3600-SL: TDL2300-SL: DVI-D
Input Performance	Digital: DVI-D (single link), max. 1600 x 1200, 60 Hz, Analog: VGA, SVGA, XGA, SXGA, UXGA, PAL, NTSC, Scanning Frequency: Analog 30-100 kHz, 50-100 Hz	8MP (4096 x 2160: 2048 x 2160 x 2 channel, 60 Hz), 8MP (UHD, 3840 x 2160: 1920 x 2160 x 2 channel, 60 Hz)	Up to 1920 x 1200 (x 2 thru Dual Link)	TDL3600-QL: 3840 x 2160 TDL3600-DL: 2560 x 1600 TDL3600-SL/TDL2300-SL: 1920 x 1200
Output Terminals	DVI-D	DVI-D (Dual Link) x 4 (A+B x 2), DVI-D (single link), mini DIN (YPbPr)	TID0102-DVI: DVI x 2 TID0102-HDL: DVI x 2, RJ45 (HDL) x 2	TDL3600-QL: DVI-D (dual link) x 2 TDL3600-DL: DVI-D (dual link) TDL3600-SL/TDL2300-SL: DVI-D
Output Performance	1280 x 1024 (SXGA), 60 Hz	8MP (4096 x 2160: 2048 x 2160 x 2, 60 Hz) 8MP (3840 x 2160: 1920 x 2160 x 2, 60 Hz) Downscale-output (with UHD input resolution only); FHD (1920 x 1080, 60 Hz) Analog/Composite (1920 x 1080, 60 Hz)	DVI: Depending on input signal HDL: up to Full HD (1920 x 1080, 60 Hz)	TDL3600-QL: 3840 x 2160 TDL3600-DL: 2560 x 1600 TDL3600-SL/TDL2300-SL: 1920 x 1200
Connector	RJ11 x 2 (Upstream, Downstream), Supported Signal: RS 232-Bus	-	-	-
Configuration	-	-	Dip switch 8pin x 2	-
Power Requirements	AC 100-120 V, 200-240 V: 50 / 60 Hz	AC 100-240 V: 50 / 60 Hz	TID0102-DVI: 5 V thru LMM0804 TID0102-HDL: 12 V thru external power adapter	PC side: through DVI interface Monitor side: 5 V support from monitor Optional: 5 V external power supply
Power Consumption	10 W	36 W	TID0102-DVI: 3.6 W TID0102-HDL: 8.4 W	-
Degree of Protection	IP20	IP20	IP20	IP20
Net Weight	850 g	1.1 kg	0.9 kg	0.1 kg (each transmitter and receiver, without cable)
Mechanical Installation	Injection nut M3 on each side (distance 31.8 mm) x 2	19" rack design, 1 RU	19" Rackform (half), 1 RU	Transmitter module at PC side (DVI-D - RJ45), TDL cable (RJ45 - RJ45), Receiver module at monitor side (RJ45 - DVI-D)
Certifications and Standards (Please contact EIZO for the latest information.)	CE, IEC/EN 62368-1, UL/CSA 62368-1 (cMETus), EN60601-1-2 Class B, FCC-A, RoHS, RCM, China RoHS, WEEE	CE, IEC/EN 62368-1, EN55032, EN55024, FCC-A, RoHS, WEEE adapter: CE, IEC/EN 62368-1	CE, IEC60950-1, CSA - C22.2 No. 60950-1, FCC-B, RoHS, RCM, WEEE	CE, IEC/EN60601-1, CAN/CSA C22.2 No. 60601-1-08, ANSI/AAMI ES60601-1:2005, EN60601-1-2 Class B, FCC-A, RCM, RoHS, China RoHS, WEEE
Supplied Accessories	AC adapter, signal cable (VGA - VGA, DVI - DVI), remote key pad with 30 m cable, Utility Disk (PDF Instructions for Use)	Adapter mini DIN to 3 x cinch, AC adapter	AC adapter (TID0102-HDL only), signal cable (DVI dual link, 0.5 m), mounting brackets x 2, holder x 2, Utility Disk (PDF Instructions for Use)	TDL3600-QL: Transmitter x 2, Receiver x 2, mounting set for LS580W/LL580W, 36 m cable x 4, TDL3600-DL: Transmitter, Receiver, 36 m cable x 2, AC adapter, TDL3600-SL: Transmitter, Receiver, 36 m cable, adapter, TDL2300-SL: Transmitter, Receiver, 23 m cable, adapter, Utility Disk (PDF Instructions for Use)
Dimensions (unit: mm)				TDL3600-QL TDL3600-DL TDL3600-SL TDL2300-SL

- ◆ EIZO Location
- ◆ EIZO Dealer Network



Local Contacts

You will find your EIZO contact partners at:
<https://www.eizo-or.com/contact>

Contact for OEM customers

EIZO GmbH	Tel: +49 7272 9850-0
Carl-Benz-Str. 3	Fax: +49 7272 9850-471
76761 Rülzheim	E-Mail: dt-contact@eizo.com
Germany	Web: https://www.eizo-or.com

EIZO, the EIZO Logo, Curator, RadiForce und FlexScan are registered trademarks of EIZO Corporation. Adobe is either registered trademarks or trademarks of Adobe in the United States and/or other countries. DICOM is the registered trademark of the National Electrical Manufacturers Association for its standards publications relating to digital communications of medical information. The terms HDMI, HDMI High-Definition Multimedia Interface, HDMI trade dress and the HDMI Logos are trademarks or registered trademarks of HDMI Licensing Administrator, Inc. Intel or Intel Core are trademarks of Intel Corporation in the U.S. and/or other countries. Windows is a registered trademark of Microsoft Corporation in the United States and other countries. All other company names, product names, and logos are trademarks or registered trademarks of their respective owners. Copyright © 2022 EIZO GmbH. All rights reserved (10/22)