



Network

PTZ

XNP-6120H

2M H.265 12x PTZ Camera



Key Features

- Max. 2Megapixel (1920 x 1080) resolution
- 16 : 9 Full HD (1080p) resolution support
- 5.2 ~ 62.4mm (12x) optical zoom, 32x digital zoom
- H.265, H.264, MJPEG codec support, Multiple streaming
- Day & Night (ICR), WDR (150dB), Intelligent video analytics
- SD/SDHC/SDXC memory slot (Max.512GB)
- IP66, IK10, Bi-directional audio support

Compatible Accessories (Optional)



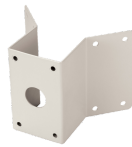
SBP-168HM



SBP-300B



SBP-300CM



SBP-300KM



SBP-300LM



SBP-300NB



SBP-300PM



SBP-300WM



SBP-300WM1



SBP-390WM2



SHP-1680FW



SPB-PTZ73

XNP-6120H

2M H.265 12x PTZ Camera



Specifications

Video	
Imaging Device	1/2.8" 2.16MP CMOS
Resolution	1920x1080, 1280x1024, 1280x960, 1280x720, 1024x768, 800x600, 800x448, 720x576, 720x480, 640x480, 640x360, 320x240
Max. Framerate	H.265/H.264: Max. 60fps at all resolutions Motion JPEG: Max. 30fps at all resolutions
Min. Illumination	Color: 0.05 Lux (1/30sec, F1.6, 50IRE) B/W: 0.005 Lux (1/30sec, F1.6, 50IRE) Color: 0.03 Lux (1/30sec, F1.6, 30IRE) B/W: 0.003 Lux (1/30sec, F1.6, 30IRE)
Video Out	CVBS: 1.0 Vp-p / 75Ω composite, 720x480(N), 720x576(P) for installation USB: Micro USB Type B, 1280x720 for installation
Lens	
Focal Length (Zoom Ratio)	5.2~62.4mm(12x) zoom
Max. Aperture Ratio	F1.6(Wide)~F3.0(Tele)
Angular Field of View	H: 54.58-(Wide) ~ 5.30-(Tele) / V: 32.19-(Wide) ~ 3.00-(Tele)
Min. Object Distance	Wide: 1.5m(4.92ft) / Tele: 2.0m(6.56ft)
Focus Control	Auto / Manual / One Shot AF
Lens Type	DC auto iris
Pan / Tilt / Rotate	
Pan Range	360- Endless
Pan Speed	Preset: 350-/sec, Manual: 0.024-/sec ~ 200-/sec
Tilt Range	190-(-5- ~ 185-)
Tilt Speed	Preset: 350-/sec, Manual: 0.024-/sec ~ 200-/sec
Sequence	Preset (300 ea), Swing, Group (6 ea), Trace, Tour (1 ea), Auto Run, Schedule
Preset Accuracy	±0.2-
Operational	
Camera Title	Displayed up to 85 characters
Direction Indicator	NONE
Day & Night	Auto(ICR)
Backlight Compensation	BLC, HLC, WDR
Wide Dynamic Range	150dB
Digital Noise Reduction	SSNR V
Digital Image Stabilization	Support(built-in gyro sensor)
Defog	Support
Motion Detection	8ea, 8point polygonal zones
Privacy Masking	32ea, rectangular Support - Color: Grey/Green/Red/Blue/Black/White - Mosaic

Gain Control	Low / Middle / High
White Balance	ATW / AWC / Manual / Indoor / Outdoor
LDC	NONE
Electronic Shutter Speed	Minimum / Maximum / Anti flicker (2~1/12,000sec)
Video Rotation	Flip, Mirror
Analytics	Directional detection, Fog detection, Face detection, Motion detection, Appear/Disappear, Enter/Exit, Loitering, Tampering, Virtual line, Audio detection, Sound classification
Business Intelligence	NONE
Serial Interface	RS-485(Samsung-T, Pelco-D/P, Panasonic, Bosch, AD, GE, Vicon, Honeywell)
Alarm I/O	Input 1ea / Output 1ea
Alarm Triggers	Analytics, Network disconnect, Alarm input
Alarm Events	File upload via FTP and e-mail Notification via e-mail SD/SDHC/SDXC or NAS recording at event triggers Alarm output PTZ Preset
Audio In	Selectable(mic in/line in) Supply voltage: 2.5VDC(4mA), Input impedance: 2K Ohm
Audio Out	Line out, Max.output level: 1Vrms
IR Viewable Length	NONE
IR Illuminator (Optional)	NONE
Water Removal	NONE
Auto Tracking	Support
Network	
Ethernet	RJ-45 (10/100BASE-T)
Video Compression	H.265, H.264, MJPEG
Audio Compression	G.711 u-law /G.726 Selectable G.726(ADPCM) 8KHz, G.711 8KHz G.726: 16Kbps, 24Kbps, 32Kbps, 40Kbps AAC-LC: 48Kbps at 16KHz
Smart Codec	Manual(5ea area), WiseStream II
Video Quality Adjustment	H.264/H.265: Target bitrate level control MJPEG: Target bitrate level control
Bitrate Control	H.264/H.265: CBR or VBR MJPEG: VBR
Streaming	Unicast(20 users) / Multicast (128 user) Multiple streaming(Up to 10 profiles)
Protocol	IPv4, IPv6, TCP/IP, UDP/IP, RTP(UDP), RTP(TCP), RTCP,RTSP, NTP, HTTP, HTTPS, SSL/TLS, DHCP, FTP, SMTP, ICMP, IGMP, SNMPv1/v2c/v3(MIB-2), ARP, DNS, DDNS, QoS, PIM-SM, UPnP, Bonjour, SRTP, NTCIP
Security	HTTPS(SSL) Login Authentication Digest Login Authentication IP Address Filtering User access log 802.1X Authentication(EAP-TLS, EAP-LEAP)
Application Programming Interface	ONVIF Profile S/G/T SUNAPI(HTTP API) Wisenet open platform
General	
Webpage Language	English, Korean, Chinese, French, Italian, Spanish, German, Japanese, Russian, Swedish,, Portuguese, Czech, Polish, Turkish, Dutch, Hungarian, Greek
Web Viewer	NONE
Edge Storage	Micro SD/SDHC/SDXC 2slot 512GB
Memory	1024MB RAM, 256MB Flash
Environmental & Electrical	

Operating Temperature / Humidity	-30°C~+55°C (-22°F~+131°F) / Less than 90% RH
Storage Temperature / Humidity	-30°C~+60°C (-22°F~+140°F) / Less than 90% RH
Certification	IP66, IK10
Input Voltage	DC12V, PoE(IEEE802.3af, Class3)
Power Consumption	Max 12W

Mechanical

Color / Material	Ivory / Aluminum
RAL Code	NONE
Product dimensions / weight	ø168 x 161.5mm(6.61 x 6.36"), 1.9kg(4.19 lb)

DORI (EN62676-4 standard)

Detect (25PPM/ 8PPF)	Wide: 74.4m(244.2ft) / Tele: 829.7m(2722ft)
Observe (63PPM/ 19PPF)	Wide: 29.8m(97.7ft) / Tele: 331.9m(1088.8ft)
Recognize (125PPM/ 38PPF)	Wide: 14.9m(48.8ft) / Tele: 165.9m(544.4ft)
Identify (250PPM/ 76PPF)	Wide: 7.4m(24.4ft) / Tele: 83.0m(272.2ft)

XNP-6120H

2M H.265 12x PTZ Camera



CAD

Unit: mm [inch]

