

# Corporate Display Solutions

## Digital transformation at work

The Wall | LED signage | Flip pro | UHD & 8K signage | ViewFinity | Video conferencing solutions

**About Samsung Electronics Co., Ltd.**

Samsung inspires the world and shapes the future with transformative ideas and technologies. The company is redefining the worlds of TVs, smartphones, wearable devices, tablets, digital appliances, network systems, and memory, system LSI, foundry and LED solutions. For the latest news, please visit the Samsung Newsroom at <http://news.samsung.com>.

**For more information**

For more information about Samsung Display Solutions, visit [www.samsung.com/business](http://www.samsung.com/business) or [www.samsung.com/displaysolutions](http://www.samsung.com/displaysolutions)

Copyright © 2022 Samsung Electronics Co. Ltd. All rights reserved. Samsung is a registered trademark of Samsung Electronics Co. Ltd. Specifications and designs are subject to change without notice. Non-metric weights and measurements are approximate. All data were deemed correct at time of creation. Samsung is not liable for errors or omissions. All brand, product, service names and logos are trademarks and/or registered trademarks of their respective owners and are hereby recognized and acknowledged.

Samsung Electronics Co., Ltd.  
416, Maetan 3-dong, Yeongtong-gu, Suwon-si, Gyeonggi-do 443-772, Korea







## Companies are now seeking more effective communication solutions

Over the past two years, societies across the globe underwent a major transformation. Everyone, everywhere had to adapt to new ways of life. Out of necessity, technological convergence and digital transformation has reshaped the way we communicate, expanded how we interact and collaborate and even helped us better understand our collective values.



### Creating inclusive experiences for all

Today's most forward-thinking companies know that inclusivity must be woven into the fabric of every organization. It's not just about productivity anymore. It's about attracting and retaining top talent. Business leaders must consider the shifting needs and wants of its people, and create systems that support them.



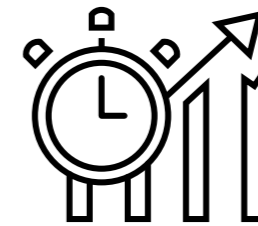
### Sustainability is part of our mission

At Samsung, sustainability is an integral part of how we do business and how we see our place in the world. As such, we are taking steps to protect our planet's limited resources. From the packaging we use to our new trade-in program, sustainability is a core aspect of how we deliver to the market.

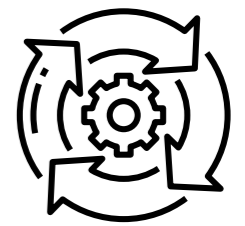
## Improve productivity and efficiency with all-inclusive corporate solutions



Elevate brand image



Empower work productivity



Manage workspaces effectively



# What Samsung offers

Samsung, the number one global digital signage solution provider, offers a comprehensive portfolio of display solutions for a wide array of applications including entrances, lobbies, conference rooms, meeting rooms and offices.



## 📍 Outside

| Exterior<br>Entrance<br>Parking lot |        |
|-------------------------------------|--------|
| Outdoor LED signage                 | P. 6-7 |
| Outdoor signage                     | P. 8   |
| EV charging signage                 | P. 9   |

## 📍 1F

| Lobby<br>Auditorium<br>Wayfinding |          |
|-----------------------------------|----------|
| The Wall                          | P. 10-11 |
| Interactive touch display         | P. 12    |
| Indoor LED signage                | P. 13    |

## 📍 2F

| Conference room<br>Meeting room |          |
|---------------------------------|----------|
| The Wall All-in-One             | P. 14-15 |
| Flip pro                        | P. 16    |
| Crystal UHD signage             | P. 17    |
| Video conferencing solution     | P. 18    |
| Small display                   | P. 19    |

## 📍 3F

| VIP room<br>Office      |       |
|-------------------------|-------|
| Neo QLED 8K signage     | P. 20 |
| Ultra-wide monitor      | P. 21 |
| High resolution monitor | P. 22 |
| Crystal UHD signage     | P. 23 |

## 📍 BIF

| Cafeteria<br>Dining area<br>Coffee shop |          |
|---|----------|
| Video wall digital menu board           | P. 24-25 |
| Business TV                             | P. 26    |
| Kiosk                                   | P. 27    |



# Exterior

## Greet customers and draw them in with an immersive viewing experience

To welcome visitors to your business, capture their attention with bright, high visibility displays that reflect the quality of your business. Samsung's LED signage can deliver a memorable viewing experience before a visitor even enters inside.



## Outdoor LED signage: XHB series



### Exceptionally clear, even in the sun

Enjoy stunning picture quality at all times. Featuring consistent brightness day and night, the XHB series illuminates the surrounding area, creating long-lasting impressions with crystal-clear content in any weather or lighting conditions.



High brightness



HDR10+ support



Proprietary S-box support



Energy saving



\* Dimensions and weight compared to against Samsung's XPR series outdoor LED Signage.  
\* Weights are compared in cabinet units.

### Twice as thin cabinet design

Set up and save time at half the size. The XHB series is now more than twice as thin and 1.7 times lighter than previous models\*. Its ultra-slim 92.9mm cabinet weighing just 23.2kg provides one-man handling for fast setup of the solution.



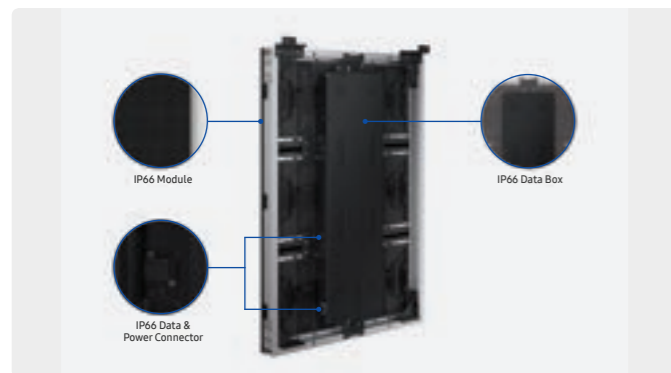
Slim depth



Light weight



Easy installation



### Reliable performance anywhere in the world

Protect against the elements. The IP66 waterproof design, rated for both the outside cabinet and internal components, ensures reliable use during downpours. Combined with fan-less, heat dissipation technology, XHB maintains performance even in direct sunlight for consistency in any outdoor environment.



IP 66 rating



Deformation proof & Anti-UV housing



Corrosion proof painting



Temperature testing



### Flexible designs for any scenario

The XHB series provides endless design possibilities for any business environment. Thanks to a variety of bespoke cabinet options, including Flat, L-Type, Curve and Fascia, businesses can get the optimal shape, size and bend for their display to naturally blend into the environment.



Flat



Curved



L-type



Fascia



# Entrance

## Make your brand stand out in the outdoors

Samsung's outdoor signage elevates outdoor branding with its bold and engaging picture quality, delivering content that helps any business stand out from the crowd.



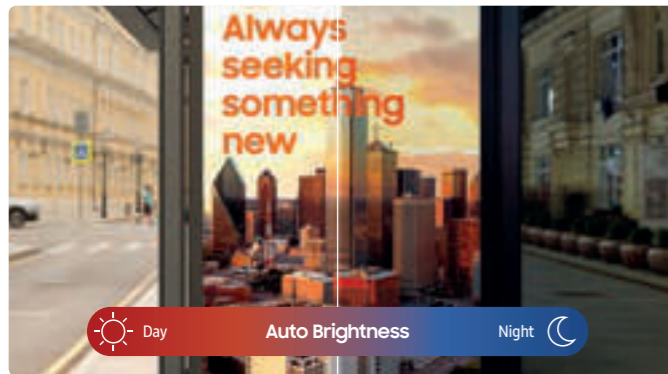
# Parking lot

## Enable vehicle charging while displaying promotions

Engage visitors from the moment they step out of their car with EV charging station displays. Enable visitors to charge their vehicles, while also displaying promotions and useful information



## Outdoor Signage : OHA / OHB series



### Unsurpassable visibility day and night

Samsung's outdoor signage allows for exceptional, consistent content delivery with high brightness and 24/7 performance. With a built-in dimming sensor, the display automatically adjusts the brightness based on the external lighting environment.



High visibility



Dimming sensor



24/7 operation



### Clear and vivid anytime, anywhere

The OHB series is UL verified for outdoor visibility, with high brightness delivering crisp content 24/7 and using a built-in auto brightness sensor adapts to external lighting. The screen uses a polarization technology to ensure viewing capability while wearing polarized lenses.



High brightness



High contrast ratio



Polarized sunglasses support



### Built strong to endure outdoor elements

Samsung's outdoor signage is certified to perform in outdoor settings. IK10-rated Magic Protection Glass and IP56-rated protection\* ensure the displays will withstand physical impact as well as dust\*\*, humidity or other outdoor elements that could affect the display.



High durability



Weather proof



IP56 rating



Magic protection glass



### Smooth and seamless content playback

The embedded MagicINFO Player backed by the powerful TIZEN operating system, boosts the overall performance of the display and offers painless content management. This ensures seamless transitions and playback to deliver a better experience for both customers and store managers.



Embedded media player



Remote management



Easy content management



Powerful security

\* For kit models without front glass, IK10 rating does not apply and IP56 is contingent upon usage of a separate front glass.

\*\* Ingress of dust is not entirely prevented but will not accumulate in sufficient quantities to interfere with the satisfactory operation of the equipment.



# Lobby

## Engage customers from the moment they arrive

The lobby is the face of your business, the moment where customers decide their first impression. The Wall ensures you make this moment count.



## The Wall : IWA/IWB series



\* Figure is based on internal testing standards against Samsung's conventional LED Signage.

### Accurate picture quality

A seamless canvas for purer black levels with enhanced depth delivers unparalleled contrast and immaculate detail. Narrower wavelengths produce RGB colors two times purer\* and more accurate than conventional LEDs. The Wall's 20bit processing presents exact color mapping with faultless accuracy.



Black seal technology



Ultra chroma technology



20 bit processing



Linear grayscale

### Visual optimization

Every second of content is instantly analyzed and optimized for perfect picture quality. The powerful AI processor delivers superior visuals in any size up to 8K resolution. Advanced picture refinement—HDR10/10+ and LED HDR—illuminates ideal peak brightness and contrast in every scene for precise imagery.



Micro AI Processor



Micro HDR



Micro motion

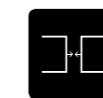


### Enhanced installation & Flexible design

Installation is transformed by eliminating module-by-module seam adjustment. Now installers adjust only per cabinet, saving time while improving mechanical quality for immersive viewing. The Wall enables simple and easy installation with a cable-less design.



Factory seam adjustment



Docking connection



Flexible design



### Proven safety & Advanced usability

You can keep eyes comfortable and safe with TUV Rheinland Eye Comfort Certification, minimizing harmful blue light, while EMC Class B certification minimizes electromagnetic waves for advanced protection. The Wall enables 8K content playback with just one S-Box and simultaneous multi-source playback from up to 4 sources.



TUV Eye comfort



EMC Class B



Simple 8K playback



Multi view



# Auditorium

## Present clearly and easily to large audiences

Samsung's LED signage is perfectly equipped for presenting important information to bigger audiences. Ensure great visibility from any angle or distance to encourage maximum engagement from all attendees.



## Indoor LED Signage : IFR series



### Clearly refined visuals

Utilizing a propriety algorithm, LED HDR creates true-to-life images, turning any content into HDR-level quality without requiring any special metadata. Samsung's LED signage also supports HDR10+ that optimizes brightness and contrast ratio scene-by-scene to ensure each frame looks exactly as intended.



LED HDR



HDR10+support



Multi-link HDR

### Screen uniformity

Samsung's complete and comprehensive calibration solution ensures LED displays continuously maintain picture quality. While all LED screens undergo multi-step factory calibration process, users can also easily manage brightness and color uniformity with their mobile devices.



Mobile calibration



Frame rate sync



Redundant system

# Wayfinding

## Help visitors easily navigate your facility

Employees and visitors are completely reliant on easy-to-navigate directories and information. Digital displays can help all visitors ensure they get exactly where need to go, on time, with interactive maps.



## Interactive touch display : QMB-T / QMR-T series



\*UHD resolution is only available on 43" and 55" models.

### Powerful touch experience

Upgraded Tizen OS makes playback more stable and opens up new possibilities with high-speed content. A responsive capacitive touch functionality offers an engaging experience while the user-friendly design enables comfortable, productive digital interactions.



All-in-one touch solution



Fast response time



UHD resolution\*



Non-glare panel

### Built to be reliable and efficient

IP5X rating ensures efficient and reliable performance even in dusty environments to protect the display against repeated customer interactions. Center IR means businesses implementing the display won't have to make any adjustments to the IR and can use it right out of the box.



CenterIR



IP5X rating



Easy maintenance



# Conference room

## Create smooth and simple conference room experiences

Any conference room needs to be equipped with a large, highly visible display that can be up and running in no time, creating efficient conferencing experiences.



## The Wall All-in-One : IAB series



\* Figure is based on internal testing standards against Samsung's conventional LED Signage.

### Accurate picture quality

A seamless canvas for purer black levels with enhanced depth delivers unparalleled contrast and immaculate detail. Narrower wavelengths produce RGB colors two times purer\* and more accurate than conventional LEDs. The Wall's 20bit processing presents exact color mapping with faultless accuracy.



Black seal technology



Ultra chroma technology



20 bit processing



Linear grayscale

### Visual optimization

Every second of content is instantly analyzed and optimized for perfect picture quality. The powerful AI processor delivers superior visuals in any size up to 4K\* resolution. Advanced picture refinement—HDR10 and LEDHDR—illuminates ideal peak brightness and contrast in every scene for precise, true-to-life imagery.



Micro AI Processor



Micro HDR



Micro motion

\*\* The upscaling resolution may vary based on the resolution support of individual models.



### Simple choice

The Wall All-in-One removes complex elements traditionally associated with LED displays, creating a streamlined purchase path. Now, make purchases based on just two factors – resolution and size – without complications such as pixel pitch or configuration.



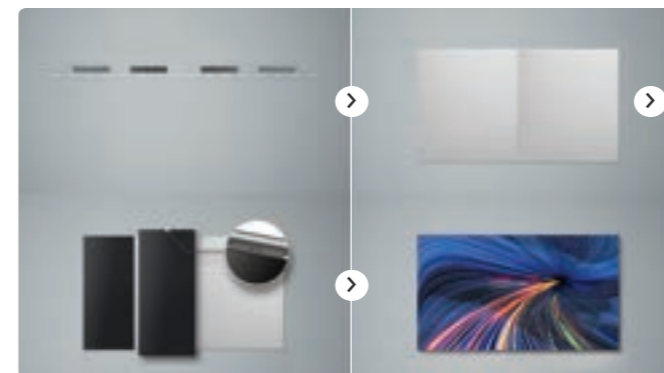
Factory seam adjustment



Docking connection



Flexible design



### Quick installation

The Wall All-in-One drastically simplifies installation by docking the background plates and hanging just three or four preset modules, depending on the display size. Installation now takes only two hours for two people to complete the screen. The Wall All-in-One includes everything you need to begin operations.



Pre-assembled installation



Built-in control box



Built-in speakers



# Meeting room

## Empower employees to collaborate effectively

Large meeting rooms can be made engaging and effective with the Flip interactive whiteboard. Features such as smooth writing and document sharing provide the perfect collaboration tool for effective teamwork.

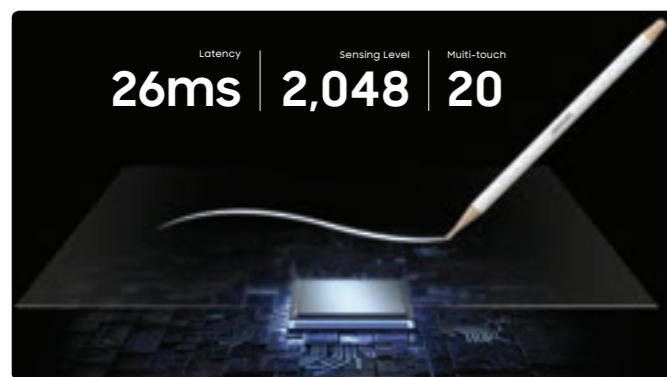


## Connect with attendees anywhere, without hassle

Samsung's Crystal UHD signage offers brilliant picture quality and wireless screen sharing, while Custom Home allows admins to lock specific settings to prevent interference during and between meetings.



## Flip pro: WMB series



\* When using single touch.

### Fast & multi-touch

Samsung Flip Pro creates a realistic, smooth writing and drawing experience with touch technology offering 26ms\* latency and 2,048 points of thickness built directly into the display. Plus, Flip Pro enables multi-touch for up to 20 people for enhanced interactivity.



Smooth & fast touch



Multitouch up to 20



Brush recognition



Flexible erasing

### Versatile sharing & connectivity

With SmartView+, up to 50 devices can be simultaneously connected to the interactive display wirelessly, in addition to enabling multi-view on up to six screens. This cable-less screen sharing functionality is ideal for larger meeting rooms.



Smart view\*\*



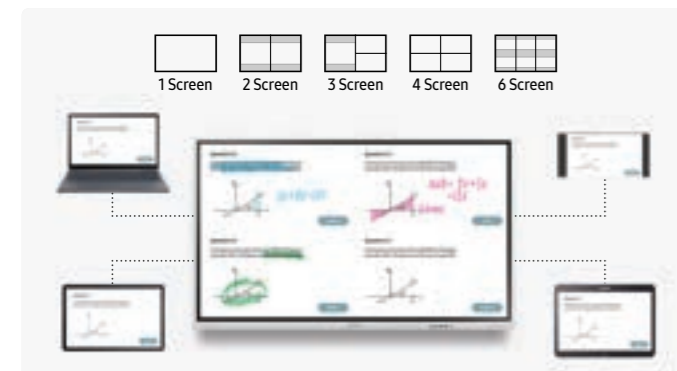
Wireless mirroring



Remote workspace



Video call Applications\*\*



\* Windows, Android, Mac, iOS are supported.  
\*\* The camera must be purchased separately.

## Crystal UHD Signage : QBB series



\* Windows, Android, iOS are supported.  
\*\* The camera must be purchased separately.

### Enhanced functionality for corporate

SmartView+ enables wireless screen sharing without cable connections, ensuring full collaboration. Featuring easier video conferencing than ever, the QBB has a built-in video conference solution that supports the most popular web conferencing apps, enabling simple video calls with just a USB-type webcam.



Smart view\*\*



Video call Applications\*\*



Slim and symmetrical design



Clean cable guide

### Streamlined set up & easy maintenance

Designed to simplify conference room management, custom home allows admins to lock specific meeting room settings, preventing users from changing settings between meetings. Now, conference rooms can work throughout the day as intended, without errors, allowing IT to focus on other tasks.



Custom home



Smart calibration



Tizenzero configuration



# Meeting room

## Make video conferencing more intelligent

Samsung's video conferencing solution has a user-friendly design that enables comfortable, productive digital interactions.



## Deliver clear and concise meeting room information

Samsung's small-sized displays are perfect for mounting outside of meeting rooms, providing important information such as meeting schedules and company notices.



## Video conferencing solution



### Optimal viewing experience

Samsung's professional displays and monitors deliver high picture quality for an optimal viewing experience in video conferencing, ensuring no important information or updates are missed by any participant. This powerful visual performance creates a more efficient business environment, brought to life in perfect clarity.



High picture quality



Vivid color expression



Powerful performance

### Intelligent video conferencing

Through a combination of optimized video conferencing solutions and Samsung's industry-leading displays, including Crystal UHD Signage, Flip and business monitors, Samsung's professional offerings transform any meeting space, enabling better accessibility, collaboration and communication.



High consistency



Convenient operation



Enhanced collaboration

## Small display : QBR / QBR-T series



\* Touch functionality is only available on QBR-T series model.

### Crisp content & Slim design

Designed for professional use, Samsung's small displays deliver crisp and easy-to-read content, supported by FHD resolution and a non-glare panel. The slim design allows for efficient space utilization, even in compact locations.



Slim, smart design



FHD resolution



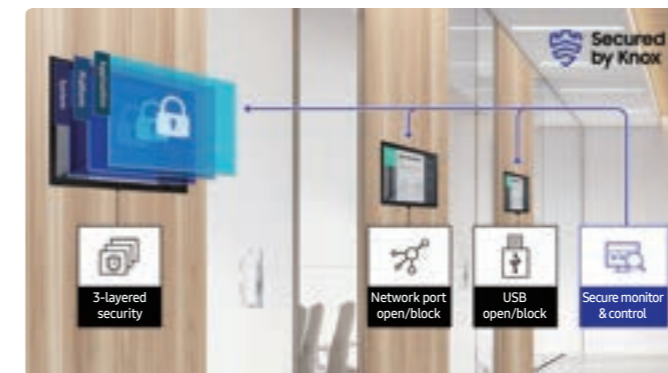
Non-glare panel



Touch functionality\*

### Comprehensive security setup

The powerful Knox security system provides rigid, three-layer security, offering airtight protection at the application, platform and system level, while restricting access to content and hardware. In addition, remote control of the network and USB ports prevents any unauthorized access.



Secured by Knox



Center IR



Built-in Wi-Fi



Embedded media player



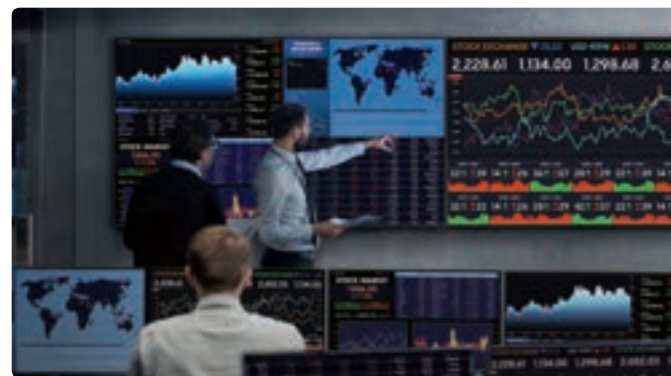
# VIP room

## Equip executives with the tools needed for productive meetings

Executives and VIPs need the right displays to represent their business, while ensuring productive meetings. Ultra-wide, curved monitors offer easy multi-tasking, while 8K signage provides the option to host small meetings within their office.



## Neo QLED 8K Signage : QPA-8K series



\*100% color volume measured in Movie Mode, certified by VDE.

### Unrivalled picture quality

Backlight dimming technology controls the proprietary Quantum Mini LEDs with optimum precision. Neo QLED 8K utilizes an advanced multi-intelligent processor - AI upscaling technology creates an optimized viewing experience and enhances every visual detail of your 8K content. With over a billion shades of color, Quantum Dot dynamically enhances content to bring any business to life.



Quantum mini LED



Neo Quantum Processor 8K



Quantum HDR 32X



100% color volume with Quantum Dot\*

### Designed for business

With impossibly slim bezels, the Infinity One Design naturally complements any business space. Samsung Neo QLED 8K Signage can be mounted flush to the wall or installed vertically using the new pivot functionality. Along with a slim, simple bezel design, Neo QLED 8K will enhance any business environment, complementing aesthetics while optimizing the space for efficiency.



Infinity one design



Boundless design



Portrait mode



Attachable slim one connect

## Ultra-wide monitors : S9 series



### A better way to multi-task

Dual QHD ensures enhanced depth in every detail, delivering incredibly realistic images. The 32:9 super ultra-wide display maximizes your screen real estate and removes the hassle of a dual monitor setup for seamless multitasking on just one screen. Picture-by-Picture lets you display input from two PCs simultaneously for effortless collaboration with colleagues or clients.



Dual QHD



32:9 super ultra-widescreen



PBP



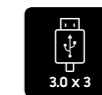
1800R curvature

### Ultimate connectivity

S9 features a USB Type-C port with 90W charging to power your laptop and transmit data with just one cable, in addition to a LAN Port which allows a laptop that has no LAN port to simply connect to the monitor for Ethernet use. With DP, 2xHDMI, USB and USB Type-C inputs, S9 allows versatile connectivity to almost any device.



USB Type-C ports



Multiple USB ports



LAN port



Built-in KVM switch



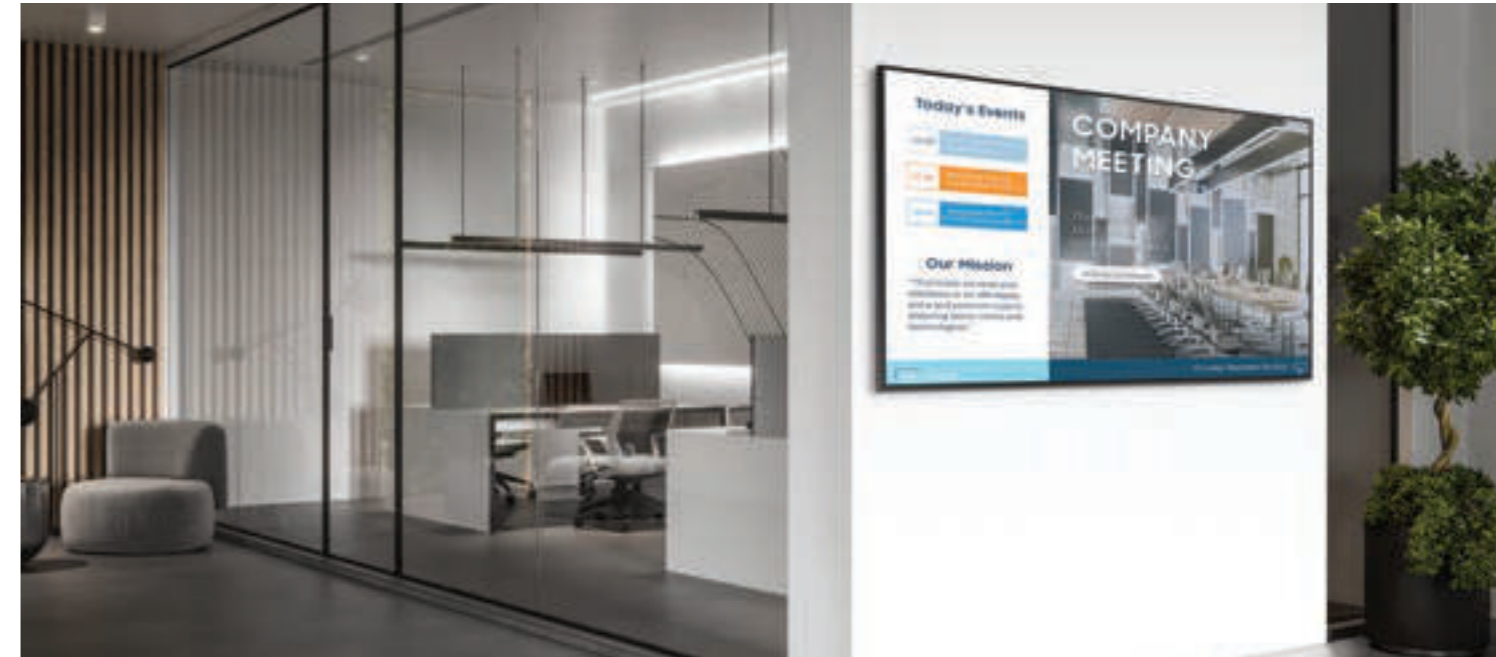
## Maximize productivity and employee efficiency

Inside any office, it's important that employees have the right equipment. Samsung offers a range of monitors with high-resolution picture and enhanced multi-tasking functionality.

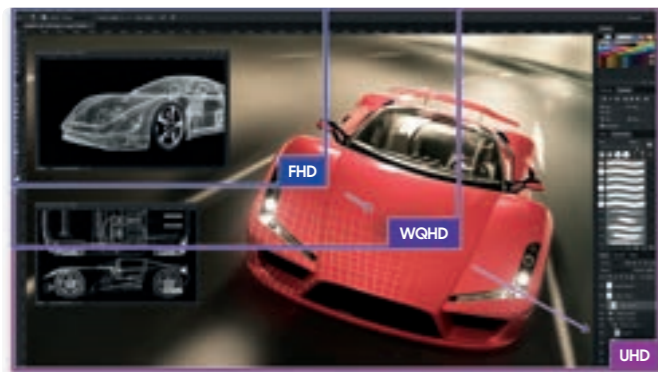


## Deliver important notices in a more engaging way

Digital displays can be utilized as a notice board, delivering more eye-catching updates to ensure that important information is received clearly.



## High resolution monitors : S8/S6 series



\*UHD resolution is only available on S8 series.  
\*\*QHD resolution is only available on S6 series.

### Life-like picture quality

Samsung's UHD and QHD monitors deliver crisper, clearer, sharper texts and images with amazing accuracy. Create work with real-world accuracy thanks to HDR10. Samsung high resolution displays replicate one billion different colors with brighter light areas and darker blacks, ensuring graphics work, video editing and design reviews are represented with strict precision.



## Crystal UHD Signage : QHB / QMB series



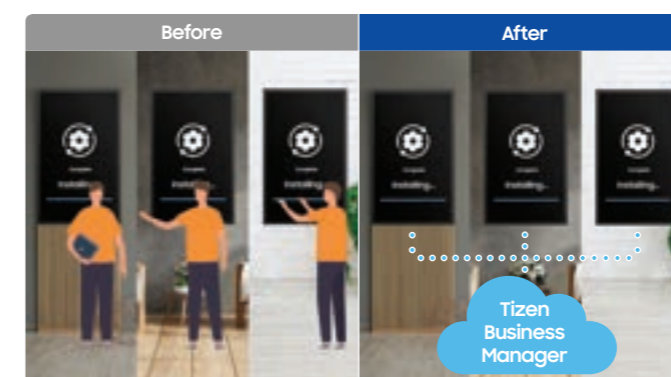
### High visibility at all times

Samsung's industry-leading video processing technology enhances every piece of content for clarity and consistency. Intelligent UHD upscaling technology, elevates lower-resolution video to UHD-level quality, providing professional picture quality. All QHB / QMB Series displays feature reliable, non-glare panels that provide better visibility from all angles, any time of day.



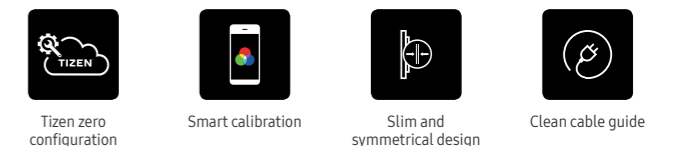
### Multi-productive displays

PBP transforms a single monitor to a dual-view monitor by displaying content from two sources side by side on one screen. With PIP, employees can see and organize multiple apps and programs exactly how they want to. A variety of connectivity options and ergonomic design improve work efficiency.



### Easier setups and updates

Tizen Zero Config is essential for IT managers operating multiple units in different locations. After a display is installed, IT professionals can register new apps through Tizen Business Manager and remotely install, eliminating needless travel and local installations. Using the Samsung mobile app, Smart Calibration ensures every display is calibrated correctly.

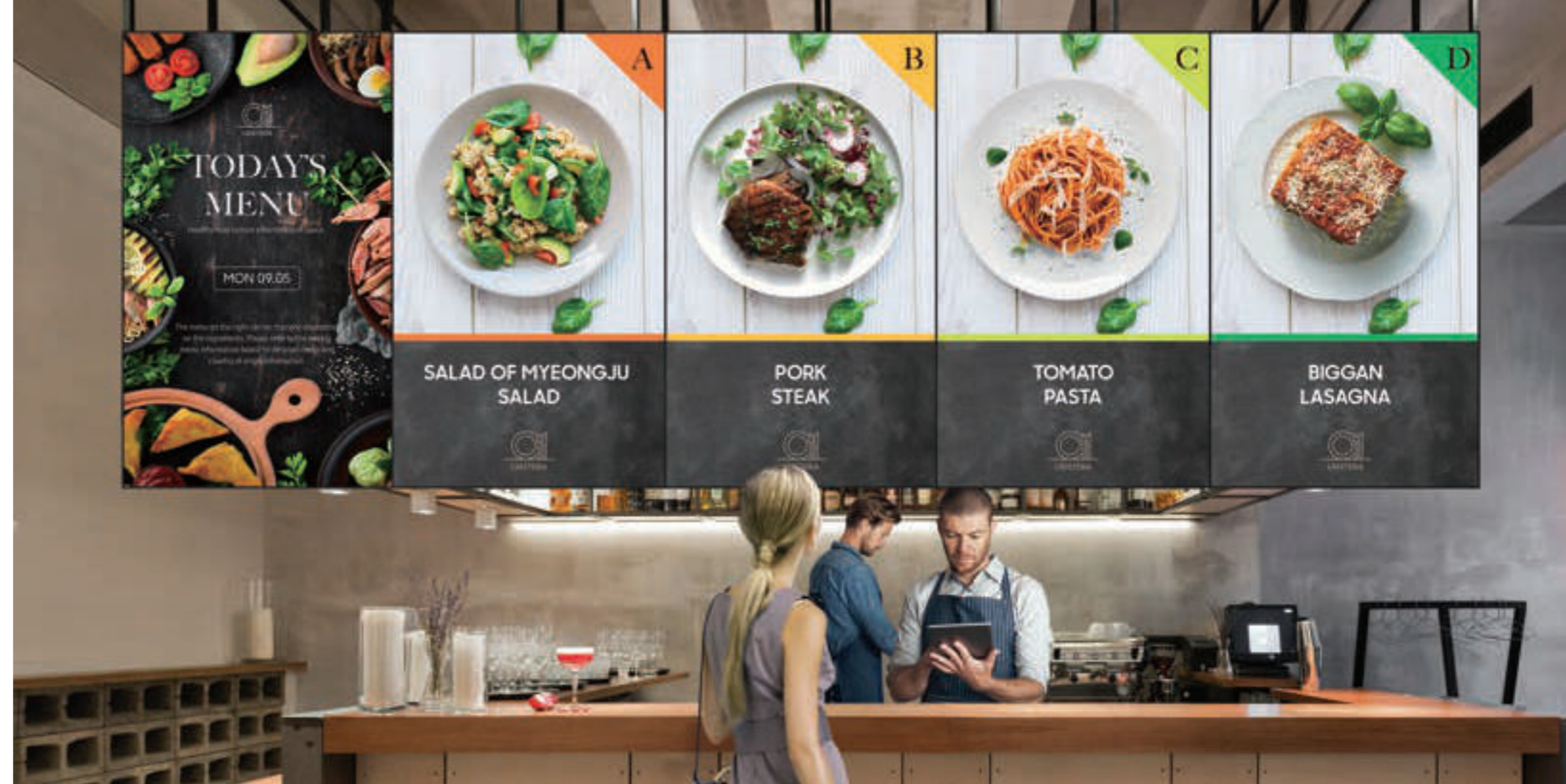




# Cafeteria

## Inform diners with crisp content

To make your cafeteria welcoming, Samsung's extreme narrow bezel video wall can be installed to display the menu before employees and visitors enter the dining area. This crystal-clear display can share what's on the menu each day along with nutritional information.



## Video wall : VHR-R / VMB-R / VHB-E / VMB-E / VMB-U series



### View content from any angle

Wide viewing angles mean content is easily visible even if guests aren't standing directly in front of the display, meaning customers can clearly see the menu options regardless of where the screen is. Plus, wide viewing angles means an indoor menu board can become the center of a corporate cafeteria's communications.



Horizontal



Vertical



High brightness



\* Bezel width and cabinet depth varies by models.

### Built slender & durable

The exceptionally thin cabinet depth provides businesses with more flexibility to create the exact video wall they need and install it in the most impactful location. A razor-narrow bezel-to-bezel design creates an uninterrupted visual experience across multiple screens. IP5x certified, Samsung video walls are dust-resistant and able to withstand a range of environmental conditions.



Narrow bezel width



Slim depth



Dust free



Center IR



### Vibrant images in any light

Non-glare panels evenly distribute light across the screen to ensure menu content can be seen accurately, creating a comfortable and satisfactory customer experience. Combined with a high contrast ratio and 24/7 operation, visuals are vivid and eye-catching any time of day or night.



Non-glare panel



High contrast ratio



24/7 operation



### Comprehensive calibration

Multi-step factory calibration process tunes video walls to uniform brightness and color throughout multiple displays. In addition to rigorous factory calibration, users can also manage brightness and color uniformity with Samsung's Color Expert Mobile, a quick and simple mobile calibration app.



Mobile calibration



Factory calibration



EMC class B



ISTA certified



# Dining area

## Enjoy the entertainment while eating

Samsung's Business TVs can be installed above the eating area to provide entertainment in the form of promotional videos, company news and branded content.



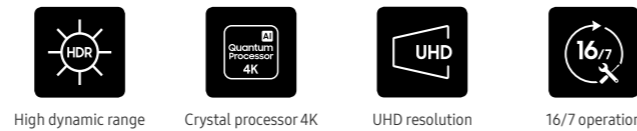
## Business TV : BEA-H series



\* Operation hours specification may vary by country.

### Eye-catching content

Samsung's Business TV delivers an eye-catching visual experience with UHD resolution in a range of sizes to fit any environment. Crystal Display ensures optimized color expression, while High-Dynamic Range improves brightness levels to better keep the attention of customers and leave a lasting impression for future sales opportunities.



### Control content with your personal device

Samsung Business TV app, available for Android and iOS devices, provides convenience by allowing users to remotely manage and control content on connected Business TVs, ensuring the right content is shown at the right time in any restaurant to maximize customer engagement.



\* Image simulated for illustration purposes

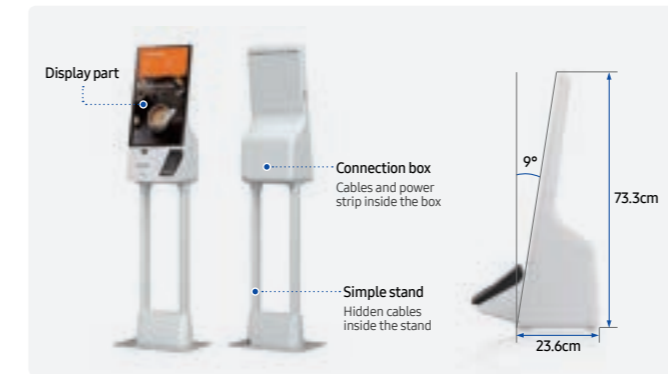
# Coffee shop

## Simplify in-store interactions

Whether early morning or just after lunch, employees and visitors need to grab a coffee. Interactive touch kiosks are installed helping to minimize queues while offering a contactless alternative for customers.



## Kiosk : KMA series



\* Wall mount must be purchased separately.

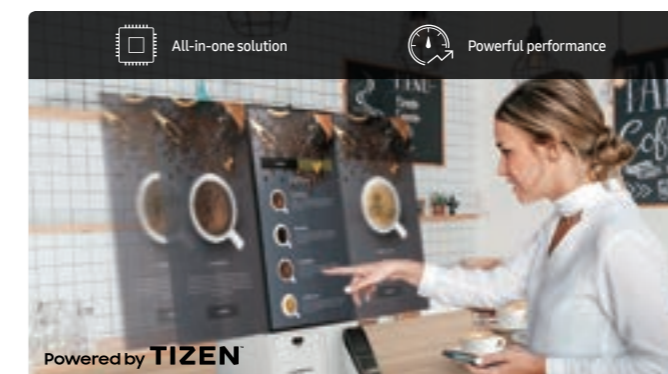
### Compact and modern design

The Samsung Kiosk adopts a modular design which provides a variety of customer payment options including credit card, barcode, QR code and NFC, along with a built-in printer. This means it needs no additional peripherals for an advanced, all-in-one solution that also makes maintenance fast and easy.



### Powerful solution with no PC needed

Samsung Kiosk is built based on Samsung's proven SoC (System on Chip) technology. This enables the kiosk to function without the need for an external PC, delivering powerful and reliable technology for a seamless customer experience.





# Specifications

## The Wall & LED signage

| Project  | Pixel pitch | Diode type               | Brightness (Peak*/Max)     | Contrast ratio**   | Certification  | Cabinet size (LxHxD, per cabinet)                                | Weight (per cabinet)      | Service                                       | IP rating   |                           |
|----------|-------------|--------------------------|----------------------------|--|--|--|---------------------------|---|-------------|---------------------------|
| Outdoor  | XHB-S***    | P6.2, P8.2, P10.8, P16.4 | Surface Mount Device (SMD) | 8,000 nit  | 8,000:1  | EMC Class A, Safety 62368-1, 60950-1, UL48, CE, UL / ULCE listed | 690 x 1,035 x 92.9 mm     | 23.2 kg                                       | Front, Rear | IP66 (Front), IP66 (Back) |
|          | XHB-E***    | P6.2, P8.2, P10.8, P16.4 | Surface Mount Device (SMD) | 7,000 nit  | 7,000:1  | EMC Class A, Safety 62368-1, 60950-1, UL48, CE, UL / ULCE listed | 690 x 1,035 x 92.9 mm     | 23.2 kg                                       | Front, Rear | IP66 (Front), IP66 (Back) |
| The Wall | IWA         | P0.8, P1.2, P1.6         | Flip-chip RGB LED          | 1,600 nit / 500 nit (P0.8)<br>1,600 nit / 800 nit (P1.2)<br>1,400 nit / 1,000 nit (P1.6)                                 | 24,000:1 (P0.8, P1.2)<br>21,000:1 (P1.6)                               | EMC Class B Safety 62368-1, 60950-1 TUV Eye Comfort              | 806.4 x 453.6 x 36.5 mm   | 11.2 kg                                       | Front       | IP20                      |
|          | IWB         | P0.6, P0.9               | Flip-chip RGB LED          | 1,600 nit / 350 nit (P0.6)<br>1,200 nit / 600 nit (P0.9)   | 13,000:1 (P0.6)<br>12,000:1 (P0.9)                                     | EMC Class B Safety 62368-1, 60950-1 TUV Eye Comfort              | 1,209.6 x 680.4 x 59.9 mm | 22.1 kg                                       | Front       | IP20                      |
|          | IAB         | P0.6, P0.9               | Flip-chip RGB LED          | 1,600 nit / 350 nit (P0.6)<br>1,200 nit / 600 nit (P0.9)   | 13,000:1 (P0.6)<br>12,000:1 (P0.9)                                     | EMC Class B Safety 62368-1, 60950-1 TUV Eye Comfort              | 1,209.6 x 680.4 x 59.9 mm | 22.1 kg                                       | Front       | IP20                      |
| Indoor   | IFR         | P1.5, P2.0, P2.5, P4.0   | Surface Mount Device (SMD) | 1,600 nit / 800 nit (P1.5)<br>1,600 nit / 1,000 nit (P2.0)<br>2,400 nit / 1,200 nit (P2.5)<br>1,500 nit / 900 nit (P4.0) | 12,000:1 (P1.5)<br>7,200:1 (P2.0)<br>12,000:1 (P2.5)<br>8,300:1 (P4.0) | EMC Class A, Safety 60950-1, FCC, UL, CB, KCC, RoHS              | 960 x 540 x 79.5 mm       | 11.8 kg (P1.5),<br>12.4 kg (P2.0, P2.5, P4.0) | Front       | IP20                      |
|          | IFR-F       | P1.5, P2.0, P2.5, P4.0   | Surface Mount Device (SMD) | 1,600 nit / 800 nit (P1.5)<br>1,600 nit / 1,000 nit (P2.0)<br>2,400 nit / 1,200 nit (P2.5)<br>1,500 nit / 900 nit (P4.0) | 12,000:1 (P1.5)<br>7,200:1 (P2.0)<br>12,000:1 (P2.5)<br>8,300:1 (P4.0) | EMC Class A, Safety 60950-1, FCC, UL, CB, KCC, RoHS              | 240 x 540 x 81 mm         | 3.2 kg  | Front       | IP20                      |

\*Peak value according to IDMS (Information Display Measurement Standard) \*\*Measured under 10lux light. Contrast in darkroom exceeds 1000000:1  
 \*\*\*Based on 2x3 cabinet type. Specifications such as cabinet size and weight per cabinet may vary depending on cabinet type.

## Outdoor signage

| Project | Screen size | Resolution    | Brightness                 | Contrast ratio | Operation hour | Certification | SoC    | S/W                     | Connectivity  |
|---------|-------------|---------------|----------------------------|----------------|----------------|---------------|--------|-------------------------|---|
| OHA     | 75"         | 3,840 x 2,160 | 3,500 nit (Peak 4,000 nit) | 1,200:1        | 24/7           | IP56 IK-10    | SSSP7  | Tizen 5.0 MagicINFO S7  | In: DP1.2, HDMI2.0(2) / HDCP2.2, USB(1)<br>Out: Stereo Mini Jack<br>Ext: RS232C(In/Out), RJ45(In)                         |
| OHA-S   | 55"         | 1,920 x 1,080 | 3,500 nit (Peak 4,000 nit) | 6,000:1        | 24/7           | IP56 IK-10    | SSSP7  | Tizen 5.0 MagicINFO S7  | In: HDMI2.0(2) / HDCP2.2, HDBaseT, USB(1)<br>Out: Stereo Mini Jack<br>Ext: RS232C(In/Out), RJ45(In/Out), HDBaseT          |
| OHB     | 24"         | 1,920 x 1,080 | 1,500 nit                  | 1,000:1        | 24/7           | IP66 IK-10    | SSSP10 | Tizen 6.5 MagicINFO S10 | In: HDMI2.0 / HDCP2.2, USB(2)<br>Out: Stereo Mini Jack<br>Ext: RS232C(In/Out), RJ45(In)                                   |
|         | 46"         | 1,920 x 1,080 | 3,500 nit (Peak 4,000 nit) | 6,000:1        | 24/7           | IP56 IK-10    | SSSP7  | Tizen 5.0 MagicINFO S7  | In: HDMI2.0(2) / HDCP2.2, HDBaseT, USB(1)<br>Out: Stereo Mini Jack<br>Ext: RS232C(In/Out), RJ45(In/Out), HDBaseT          |
| OHB-S   | 46"         | 1,920 x 1,080 | 3,500 nit (Peak 4,000 nit) | 6,000:1        | 24/7           | IP56 IK-10    | SSSP10 | Tizen 6.5 MagicINFO S10 | In: HDMI2.0(2) / HDCP2.2, HDBaseT, USB(1)<br>Out: Stereo Mini Jack<br>Ext. Control: RS232C(In/Out), RJ45(In/Out), HDBaseT |

## Interactive touch display

| Project | Screen size | Resolution    | Brightness          | Contrast ratio                 | Operation hour | Touch type | SoC    | S/W                     | Connectivity  |
|---------|-------------|---------------|---------------------|--------------------------------|----------------|------------|--------|-------------------------|---|
| QMR-T   | 32"         | 1,920 x 1,080 | 400 nit (w/o glass) | 5,000:1                        | 16/7           | Capacitive | SSSP6  | Tizen 4.0 MagicINFO S6  | In: HDMI 2.0(2), HDCP 2.2, USB 2.0(2)<br>Out: Stereo Mini Jack, Touch out 2(PC/Screen)<br>Ext: RS232C(In/Out), RJ45(In)           |
| QMB-T   | 43", 55"    | 3,840 x 2,160 | 500 nit (w/o glass) | 4,000:1 (*IPS - 1,200:1 (43")) | 24/7           | Capacitive | SSSP10 | Tizen 6.5 MagicINFO S10 | In: DP1.2(1), HDMI 2.0(3), HDCP 2.2, USB 2.0(2)<br>Out: Stereo Mini Jack, Touch out 2(PC/Screen)<br>Ext: RS232C(In/Out), RJ45(In) |

## Flip pro

| Project | Screen size | Resolution    | Brightness              | Contrast ratio  | Touch type | # of drawing  | Object recognition range   | Connectivity  |
|---------|-------------|---------------|-------------------------|---|------------|---|--|---|
| WMB     | 55", 65"    | 3,840 x 2,160 | 350 nit (without glass) | 4,000:1   | IR         | 20 Touch (Internal/External)<br>* Whiteboarding app works 4 drawing | 2mm / 4mm / 8mm / 50mm (Brush Mode : Dynamic Object Recognition) | In: [Basic] HDMI, DP, USB [With Tray] HDMI, USB Type-C, USB(3)<br>Out: Stereo Mini Jack [Basic] Touch out / [With Tray] Touch out<br>Ext: Touch input, RS232C, RJ45 |
|         | 4,700:1     |               |                         | In: HDMI(2), DP, USB Type-C, OPS I/F, USB(3)<br>Out: Stereo Mini Jack, Touch out(2)<br>Ext: Touch input, RS232C, RJ45 |            |   |  |   |

## Crystal UHD signage

| Project | Screen size             | Resolution    | Brightness | Contrast Ratio                 | Operation hour | Certification                          | SoC    | S/W                     | Connectivity   |
|---------|-------------------------|---------------|------------|--------------------------------|----------------|--|--------|-------------------------|--|
| QHB     | 43", 50", 55", 65", 75" | 3,840 x 2,160 | 700 nit    | 4,000:1                        | 24/7           | IP5x EMC Class B ENERGY STAR 8.0 EPEAT | SSSP10 | Tizen 6.5 MagicINFO S10 | In: DP1.2, HDMI2.0(3), USB2.0(2)<br>Out: Stereo Mini Jack<br>Ext: RS232C(In/Out), RJ45(In) |
| QMB     | 43", 50", 55", 65", 75" | 3,840 x 2,160 | 500 nit    | 4,000:1                        | 24/7           | IP5x EMC Class B ENERGY STAR 8.0 EPEAT | SSSP10 | Tizen 6.5 MagicINFO S10 | In: DP1.2, HDMI2.0(3), USB2.0(2)<br>Out: Stereo Mini Jack<br>Ext: RS232C(In/Out), RJ45(In) |
| QBB     | 43", 50", 55", 65", 75" | 3,840 x 2,160 | 350 nit    | 4,000:1 (*IPS - 1,200:1 (43")) | 16/7           | IP5x EMC Class B ENERGY STAR 8.0 EPEAT | SSSP10 | Tizen 6.5 MagicINFO S10 | In: DP1.2, HDMI2.0(3), USB2.0(2)<br>Out: Stereo Mini Jack<br>Ext: RS232C(In/Out), RJ45(In) |

## Small display

| Project | Screen size | Resolution    | Brightness              | Contrast ratio          | Operation hour | SoC   | S/W          | Connectivity  |
|---------|-------------|---------------|-------------------------|-------------------------|----------------|-------|--------------|---|
| QBR     | 13"         | 1,920 x 1,080 | 300 nit                 | 800:1                   | 16/7           | SSSP6 | MagicINFO S6 | In: HDMI1.4, HDCP 2.2, USB 2.0<br>Out: Stereo Mini Jack<br>Ext: RS232C(In), RJ45            |
| QBR-B   | 24"         | 1,920 x 1,080 | 250 nit                 | 1,000:1                 | 16/7           | SSSP6 | MagicINFO S6 | In: HDMI1.4, HDCP 2.2, USB 2.0<br>Out: Stereo Mini Jack<br>Ext: RS232C(In), RJ45            |
| QBR-T   | 13"         | 1,920 x 1,080 | 250 nit                 | 600:1                   | 16/7           | SSSP6 | MagicINFO S6 | In: HDMI1.4, HDCP 2.2, USB 2.0<br>Out: Stereo Mini Jack<br>Ext: RS232C(In), RJ45            |
| QBR-TB  | 24"         | 1,920 x 1,080 | 250 nit (without glass) | 1,000:1 (without glass) | 16/7           | SSSP6 | MagicINFO S6 | In: HDMI1.4, HDCP 2.2, USB 2.0<br>Out: Stereo Mini Jack, Touch out<br>Ext: RS232C(In), RJ45 |

## Neo QLED 8K signage

| Project | Screen size   | Resolution    | Brightness               | Contrast ratio | Operation hour | Certification                     | SoC   | S/W          | Connectivity   |
|---------|---------------|---------------|--------------------------|----------------|----------------|-----------------------------------|-------|--------------|--|
| QPA-8K  | 65", 75", 85" | 7,680 x 4,320 | 500 nit (Peak 2,000 nit) | 1,500:1        | 16/7           | EMC Class B Safety 60065, 62368-1 | SSSP9 | MagicINFO S9 | In: HDMI 2.1, HDMI 2.0 (3), HDCP 2.2, USB 2.0 (3)<br>Out: Optical (Digital Audio Out)<br>Ext: RS232C(In), RJ45 |

## ViewFinity

| Project | Screen size | Panel           | Aspect ratio | Resolution    | Brightness | Contrast ratio | Connectivity  |
|---------|-------------|-----------------|--------------|---------------|------------|----------------|---|
| S95UA   | 49"         | Curved (1,800R) | 32:9         | 5,120 x 1,440 | 350 nit    | 3,000:1        | DP1.4, HDMI2.0(2), USB3.0(3), USB Type-C, Ethernet(LAN)       |
| S80PB   | 27", 32"    | Flat            | 16:9         | 3,840 x 2,160 | 350 nit    | 1,000:1        | DP1.4, HDMI2.0, HDCP2.2, USB3.0(3), USB Type-C, Ethernet(LAN) |
| S80TB   | 27"         | Flat            | 16:9         | 3,840 x 2,160 | 350 nit    | 1,000:1        | HDMI2.0, HDCP2.2, USB3.0(3), Thunderbolt(2), Ethernet(LAN)    |
| S65UA   | 34"         | Curved (1,000R) | 21:9         | 3,440 x 1,440 | 300 nit    | 4,000:1        | DP1.2, HDMI2.0, USB3.0(3), USB Type-C, Ethernet(LAN)          |

## Video wall

| Project | Screen size | Resolution    | Brightness | Contrast ratio | Operation hour | Certification            | Bezel width  | Connectivity  |
|---------|-------------|---------------|------------|----------------|----------------|--------------------------|--|---|
| VHR-R   | 55"         | 1,920 x 1,080 | 700 nit    | 1,100:1        | 24/7           | IP5x EMC Class B ISTA-6A | 0.44 mm (Even)   | In: DVI-D, DP1.2, HDMI 2.0(2), Stereo Mini Jack, HDCP 2.2, USB(Only I/F/W Upgrade)<br>Out: DP1.2(Loop-out), Stereo Mini Jack<br>Ext: RS232C(In/Out), RJ45(In) |
| VMB-R   | 55"         | 1,920 x 1,080 | 500 nit    | 1,100:1        | 24/7           | IP5x EMC Class A ISTA-6A | 0.44 mm (Even)   | In: DVI-D, DP1.2, HDMI 2.0(2), Stereo Mini Jack<br>Out: DP1.2(Loop-out), Stereo Mini Jack<br>Ext: RS232C(In/Out), RJ45(In)                                    |
| VHB-E   | 55"         | 1,920 x 1,080 | 700 nit    | 1,000:1        | 24/7           | IP5x EMC Class B ISTA-3A | B2B: 1.3 mm (U/L), 0.44 mm (R/B) A2A: 1.75 mm (U/L), 0.74 mm (R/B) | In: DVI-D, DP1.2, HDMI 2.0(2), Stereo Mini Jack<br>Out: DP1.2(Loop-out), Stereo Mini Jack<br>Ext: RS232C(In/Out), RJ45(In)                                    |
| VHB-E   | 55"         | 1,920 x 1,080 | 500 nit    | 1,000:1        | 24/7           | IP5x EMC Class B ISTA-3A | B2B: 1.3 mm (U/L), 0.44 mm (R/B) A2A: 1.75 mm (U/L), 0.74 mm (R/B) | In: DVI-D, DP1.2, HDMI 2.0(2), Stereo Mini Jack<br>Out: DP1.2(Loop-out), Stereo Mini Jack<br>Ext: RS232C(In/Out), RJ45(In)                                    |
| VMB-U   | 46", 55"    | 1,920 x 1,080 | 500 nit    | 1,200:1        | 24/7           | IP5x EMC Class A ISTA-6A | 2.25 mm (U/L), 1.25 mm (R/B)                                       | In: DVI-D, DP1.2, HDMI2.0(2), Stereo Mini Jack, USB 2.0<br>Out: DP1.2(Loop-out), Stereo Mini Jack Ext: RS232C(In/Out), RJ45(In)                               |

## Business TV

| Project | Screen size                       | Resolution    | Brightness | Contrast ratio | Operation hour              | Certification | S/W       | Connectivity  |
|---------|-----------------------------------|---------------|------------|----------------|-----------------------------|---------------|-----------|---|
| BEA-H   | 43", 50", 55", 65", 70", 75", 85" | 3,840 x 2,160 | 250 nit    | 4,700:1        | 16/7 (Korea & Brazil : 8/7) | EMC Class B   | Tizen 5.5 | WiFi 5, Bluetooth, HDMI(3), HDCP1.4/2.2, USB(1), RJ45 |

## Kiosk

| Project | Screen size | Resolution    | Brightness          | Contrast ratio      | Operation hour | Touch type | SoC     | S/W       | Connectivity  |
|---------|-------------|---------------|---------------------|---------------------|----------------|------------|---------|-----------|---|
| KMA     | 24"         | 1,920 x 1,080 | 250 nit (w/o glass) | 1,000:1 (w/o glass) | 16/7           | Capacitive | SSSP6.0 | Tizen 4.0 | In: HDMI1.4, USB<br>Out: Touch out<br>Ext: RS232C, RJ45 |