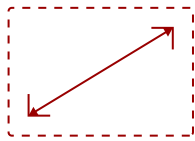


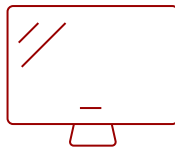
LDM163-181 - 163" DISPLAY, 1920 X 1080 RESOLUTION, 600-NIT BRIGHTNESS

Key Features

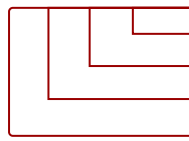
- High-Impact Messaging
- Simple and Easy Setup
- Amazing Audio-Visual Experience
- Device Management Made Easy
- Easy Maintenance



163
DISPLAY



Fine Pixel Pitch LED
PANEL



1920x1080
RESOLUTION



Product Description

The ViewSonic® LDM163-181 is an innovative All-in-One Direct View LED display. With a huge 163" screen size, the LDM163-181 is built to impress as a centerpiece in any conference room, boardroom, or lobby. Along with its immense screen size, this display delivers stunning visuals with Full HD resolution, 1.5mm fine pixel pitch, 600-nit high brightness, 3,840Hz ultra-fast refresh rate, and 120% Rec.709 wide color gamut. What's more, its ultra-slim 35mm thickness and bezel-free design delivers sleek looks whether its hanging on a wall or mounted on an optional aluminum floor stand. Despite its huge screen size, a front-assembly modular design enables easy delivery, installation, and maintenance. And with remote configuration and content management system support, the ViewSonic LDM163-181 is also suitable for a wide array of diverse signage applications.

Specifications

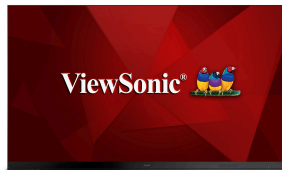
More Information

Display Type

Direct View LED

Screen Size	163
Viewable Area (in.)	163
Orientation	Landscape
LED Pitch Size (mm)	1.88
LED Grayscale	14 bits
Display Resolution	1920 x 1080
Refresh Rate	3,840Hz
Panel Type	Fine Pixel Pitch LED
Aspect Ratio	16:9
Static Contrast Ratio	6,000:1
Backlight Life (Hours)	100,000
Brightness	600-nit
Viewing Angles	160° horizontal, 160° vertical
Wifi	2.4G / 5G n
OS	Android 8.0
CPU	Hi3751 V811
Memory	4GB DDR4
Storage	32GB (26GB available)
Internal Speakers	5W (x2)
PC Resolution (max)	1920x1080
Mac® Resolution (max)	1920x1080
HDMI 1.4 (with HDCP 1.4)	2
HDMI 1.4 Out (with HDCP 1.4)	1
3.5mm Audio Out	1
USB 2.0	3
RS232	1
Ethernet LAN (RJ45)	1
IR in	1
Intel® OPS Slot In (80-pin)	1
Voltage	100-240V+/- 10%, (100-120V/30A, 50/60Hz ; 220-240V/15A)
Consumption (max)	2660W
Consumption (typical)	1860W
Stand-by	<0.5W
On Screen Display	Yes
Remote Control	Yes
Temperature	32-104° F (0 - 40° C)

Humidity (non-condensing)	20-80%
Net (lbs)	423
Gross (lbs)	661
Net (kg)	192
Gross (kg)	300
Packaging (in.)	82.7 x 33.5 x 32.1
Physical (in.)	142.5 x 84.4 x 1.4
Physical with Wall Mount (in.)	142.5 x 84.5 x 2.2
Packaging (mm)	2100 x 850 x 815
Physical (mm)	3620.95 x 2143.45 x 35
Physical with Wall Mount (mm)	3620.95 x 2143.45 x 56
Warranty	5-year limited warranty on parts and labor, on-site service
Recycle/Disposal	Please dispose of in accordance with local, state or federal laws.
PACKAGE CONTENTS	Power Cord: x1, USB Cable (A-B): x1, Remote Control: x1, QSG: x1, Wall Mount: x1, Spare Parts: LED PCB Unit x2, Maintenance Tool: LD-MK-001 x1
Regulations	cTUVus, FCC, RoHS



Contact Sales

ViewSonic.com

888.881.8781

email:

salesinfo@viewsonic.com