

PERFORMANCE

Processor

Intel® Core™ i7-1260U, 10C (2P + 8E) / 12T, P-core 1.1 / 4.7GHz, E-core 0.8 / 3.5GHz, 12MB

Graphics

Integrated Intel® Iris® Xe Graphics

Chipset

Intel® SoC Platform

Memory

32GB Soldered LPDDR5-5200

Memory Slots

Memory soldered to systemboard, no slots, 8-channel

Max Memory

32GB soldered memory, not upgradable

Storage

1TB SSD M.2 2242 PCIe® 4.0x4 NVMe® Opal 2.0

Storage Support

One drive, up to 1TB M.2 2242 SSD

Storage Slot

One M.2 2242 PCIe® 4.0 x4 slot

Audio Chip

High Definition (HD) Audio

Speakers

Stereo speakers, 2W x3, Dolby® Atmos®, 2 of 3 speakers enabled in each posture

Camera

5.0MP + IR Discrete, MIPI, Computer Vision

Microphone

4x, Array

Battery

Integrated 64Wh (48Wh + 16Wh)

Power Adapter

65W USB-C® Slim (2-pin)

DESIGN

Display

16.3" (2560x2024) Folding OLED SDR 400nits / HDR 600nits, Anti-smudge, 100% DCI-P3, DisplayHDR™ True Black 600, Dolby® Vision™, Touch

Touchscreen

On-cell, 10-point Multi-touch

Keyboard

ThinkPad® Bluetooth® TrackPoint® Keyboard and Stand, English

Case Color

Performance Black

- Lenovo reserves the right to change specifications or other product information without notice.
- Battery life is an estimated maximum. Actual battery life may vary by hardware or system settings, active applications, battery conditioning, etc.
- California Electronic Waste Recycling Fee In California, per state law, Lenovo charges an electronic waste recycling fee on this covered device at the time of sale of the product. For more information, go to: <https://www.calrecycle.ca.gov/Electronics/Consumer>

Case Material

Aluminium + 100% Recycled Performance Fabric

Pen

Lenovo® Precision Pen

Dimensions (WxDxH)

Folded: 176.2 x 276.2 x 17.4 mm (6.94 x 10.87 x 0.69 inches)

Unfolded: 345.7 x 276.2 x 8.6 mm (13.61 x 10.87 x 0.34 inches)

Weight^[2]

X1 Fold 16: starting at 1.311 kg (2.89 lbs)

Keyboard and stand: around 627 g (1.38 lbs)

Total: around 1.938 kg (4.27 lbs)

SOFTWARE

Operating System

Windows® 11 Pro, English

Bundled Software

Intel® Connectivity Performance Suite

CONNECTIVITY

Ethernet

No Onboard Ethernet

WLAN + Bluetooth®

Intel® Wi-Fi® 6E AX211, 11ax 2x2 + BT.5.1

Standard Ports

- 1x USB-C® 3.2 Gen 2 (support data transfer, Power Delivery 3.0 and DisplayPort™ 1.4a)
- 2x Thunderbolt™ 4 / USB 4 40Gbps (support data transfer, Power Delivery 3.0 and DisplayPort™ 1.4a)

Docking

Various docking solutions supported via Thunderbolt™ or USB-C®.

For more compatible docking solutions, please visit [Docking for ThinkPad® X1 Fold 16 Gen 1](#)

SECURITY & PRIVACY

Security Chip

Discrete TPM 2.0

Fingerprint Reader

Touch Style, Match-on-Chip, in Keyboard Key

Other Security

- Computer Vision-based User Presence Sensing including lock on leave
- IR camera for Windows® Hello
- Glance by Mirametrix®
- Tile ready

MANAGEABILITY

System Management

Intel® vPro® Enterprise

SERVICE

Base Warranty

3-year, Courier or Carry-in

Included Upgrade

3Y Premier Support Upgrade from 3Y Courier/Carry-in (5WS1K27053)

CERTIFICATIONS

Green Certifications

- EPEAT™ Gold
- ENERGY STAR® 8.0
- ErP Lot 6 and Lot 26
- TCO Certified 9.0
- RoHS compliant

Other Certifications

Intel® Evo™ Platform

Mil-Spec Test

MIL-STD-810H military test passed

MODEL

TopSeller	: Yes	Announce Date	: 2022-10-18
EAN / UPC / JAN	: 196802937597	End of Support	: 2029-03-30



To see more note information, please link to https://psref.lenovo.com/Detail/ThinkPad_X1_Fold_16_Gen_1?M=21ES000JUS

Premier Support - A direct 24x7x365 line to our most elite technicians.



Advanced technical support, 24x7x365, in more than 100 markets



Technical Account Managers for proactive relationship and escalation management



Comprehensive hardware & OEM software support



Priority on service delivery and repair parts



Single point of contact for simplified end-to-end case management



Lenovo Service Connect Portal for customized reporting and product support

Accidental Damage Protection - Protection of your PC from the unexpected.

Experience shows that a significant portion of devices may be damaged (and not covered under warranty) in the first three years. Lenovo's Accidental Damage Protection service covers accidents beyond the system warranty such as drops, spills, bumps and even electrical surges. Make sure your new device has maximum protection, avoid unplanned costs and get peace of mind.

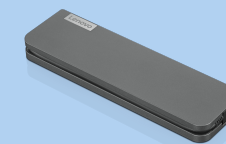
Base Warranty - Included with the systems you purchase, default 1- or 3-year coverage window.

Warranty Extensions & Upgrades - Service and protection that's right for your circumstances.

- Pick Up & Return Courier
- Onsite Support
- Technician Installed Customer
- Replaceable Unit Service
- International Warranty Upgrade

Lenovo may not offer the products, services or features discussed in this document in all regions. Lenovo may withdraw an offering at any time. Information is subject to change without notice. Consult your local representative for information on offerings available in your area. Lenovo reserves the right to change specifications or other product information without notice. Lenovo is not responsible for photographic or typographical errors. Lenovo provides this publication "as is" without warranty of any kind, either express or implied, including the implied warranties of merchantability or fitness for a particular purpose.

Recommended Accessories



Lenovo USB-C Mini Dock_US

40AU0065US

Expand Your Potential with An Universal Mini Dock; Lenovo understands that modern business depends on a wide variety of PC's and even brands to meet their business needs. To make this easier Lenovo USB-C Mini dock is ...



ThinkPad Thunderbolt 3 Dock Gen 2 - US

40AN0135US

Lenovo understands that modern business depends on a wide variety of notebooks and devices from different brands working seamlessly together to meet business needs. To deliver this experience, ThinkPad Thunderbolt 3 D...

For a full list of accessories and services, please visit:
<https://smartfind.Lenovo.com>

Lenovo

PSREF
Product Specifications
Reference