

# IOLAN SCS Console Server

[perle.com/products/iolan-scs-terminal-server.shtml](http://perle.com/products/iolan-scs-terminal-server.shtml)

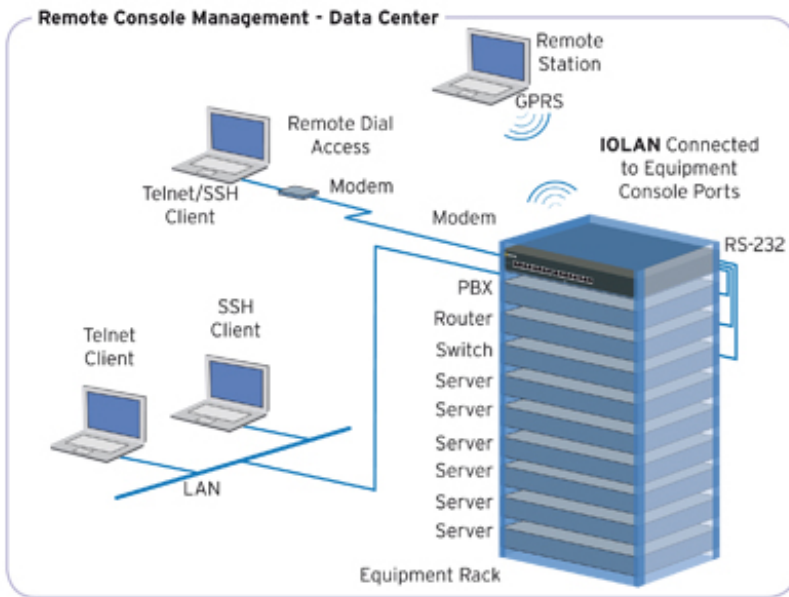


- 8, 16, 32 or 48 RS-232 serial port interfaces
- Dual 10/100/1000 Ethernet support with [Redundant Path Technology](#)
- PCI Slot for integrated out-of-band access
- Advanced AAA security and encryption to meet all data center compliance policies

**IOLAN SCS Console Servers** have a truly fault tolerant design to minimize downtime and provide reliable, secure remote device management. With built-in dual Ethernet and Redundant Path technology the IOLAN SCS provides assured serial console port access, offering the most reliable solution for managing data center and remote branch equipment... all at the best price performance.

## Why IOLAN SCS Console Servers are the preferred choice:

- High performance 400 MHz, 750 MIPS, 32 bit processor with integrated hardware encryption processor for the best throughput
- [Clustering](#) – Provides a single view of all out of band console ports. Ideal for large data centers
- Intelligent Power cycling of equipment with [Perle Remote Power Switches](#)
- Next Generation IP support (IPv6) for investment protection and network compatibility
- Primary/Backup host functionality enables automatic connections to alternate hosts should the primary TCP connection go down
- [EasyPort Web](#) – Access equipment serial console ports by using your java-enabled Internet browser
- [FIPS 140-2](#) – Cryptographic modules meet US Government NIST compliancy
- [Dynamic DNS](#) – Easy console management access from anywhere on the Internet
- Java-free browser access to remote serial console ports via Telnet and SSH
- [Ping watchdog probes](#) enable customers to power cycle equipment with attached Perle RPS power switches in the event of an unresponsive networking gear
- Lifetime warranty – best investment protection available



## Secure Serial Console Management

IOLAN SCS Console Servers enable administrators to securely access remote serial console ports on equipment such as PBX, servers, routers, network storage equipment and security appliances through an IP network. Data management information is protected through standard encryption tools such as Secure Shell (SSH) and Secure Sockets Layer (SSL). Access by authorized users is assured via authentication schemes such as RADIUS, TACACS+, LDAP, Kerberos, NIS and RSA Security's SecurID tokens.

By using encryption technologies, an IOLAN Console Server protects sensitive and confidential data before being sent across a corporate Intranet or public Internet. For compatibility with peer encryption devices, all of the major encryption ciphers such as AES, 3DES, RC4, RC2 and CAST128 are fully supported.

Recognized as the most secure method for communicating to remote private networks over the Internet, the IPSec standard provides robust authentication and encryption of IP packets at the network layer of the OSI model. As a standard it is ideal for multi-vendor interoperability within a network, providing flexibility and the ability to match the right solution for a particular application.

## High Availability Access

The IOLAN SCS has built-in fault tolerant capabilities to ensure secure and reliable access for managing important mission critical equipment. Dual Ethernet interfaces on the IOLAN SCS provide redundant network paths while dual AC power supply models ensure that console management is available even if the primary AC power source fails. For remote administrators that require access from home, on the road or in the event of a total network failure, an optional IOLAN V.92 modem card delivers a solid, integrated solution with direct phone line attachment via its onboard RJ11 jack.

Protection against electrostatic discharges and power surges is provided with robust 15Kv ESD protection circuitry on each serial port.

## Advanced IP Technology

With support for Next Generation IP (IPv6) the IOLAN range provides organizations with investment protection to meet this rapidly growing standard.

Demand for IPv6, which is compatible with IPv4 addressing schemes, is driven by the need for more IP address. With the implementation and rollout of advanced cellular networks, a robust method is needed to handle the huge influx of new IP addressable devices on the Internet. In fact, the US Department of Defense has mandated that all equipment purchased be IPv6 compatible. In addition, all major Operating Systems such as Windows, Linux, Unix and Solaris, as well as routers, have built-in support for IPv6.

It is therefore important for end users and integrators to select networking equipment that incorporates the IPv6 standard. The IOLAN line with support for IPv6 already built in, is the best choice in serial to Ethernet technology.

## Lifetime Warranty

All Perle IOLAN SCS models are backed by the best service and support in the industry including Perle's unique lifetime warranty. Since 1976 Perle has been providing its customers with networking products that have the highest levels of performance, flexibility and quality.

### Serial Port Access

---

Connect directly using Telnet / SSH by port and IP address

---

[Connect with EasyPort menu by Telnet / SSH](#)

---

[Use an internet browser to access with HTTP or secure HTTPS via EasyPort Web menu](#)

---

Java-free browser access to remote serial console ports via Telnet and SSH

---

[Ports can be assigned a specific IP address \( aliasing \)](#)

---

Multisession capability enables multiple users to access ports simultaneously

---

[Multihost access enables multiple hosts/servers to share serial ports](#)

---

### Accessibility

---

In-band ( Ethernet ) and out-of-band ( dial-up modem ) support

---

[Dynamic DNS enables users to find a console server from anywhere on the Internet](#)

---

[Domain name control through DHCP option 81](#)

---

IPV6 and IPV4 addressing support

---

---

## Availability

---

Primary/Backup host functionality enables automatic connections to alternate host(s)

---

## Security

---

SSH v1 and v2

---

SSL V3.0/TLS V1.0, SSL V2.0

---

SSL Server and SSL client mode capability

---

SSL Peer authentication

---

[IPSec VPN : NAT Traversal, ESP authentication protocol](#)

---

Encryption: AES (256/192/128), 3DES, DES, Blowfish, CAST128, ARCFOUR(RC4), ARCTWO(RC2)

---

Hashing Algorithms: MD5, SHA-1, RIPEMD160, SHA1-96, and MD5-96

---

Key exchange: RSA, EDH-RSA, EDH-DSS, ADH

---

X.509 Certificate verification: RSA, DSA

---

Certificate authority (CA) list

---

Local database

---

RADIUS Authentication, Authorization and Accounting

---

TACACS+ Authentication, Authorization and Accounting

---

LDAP, NIS, Kerberos Authentication

---

RSA SecureID-agent or via RADIUS Authentication

---

SNMP v3 Authentication and Encryption support

---

IP Address filtering

---

Disable unused daemons

---

Active Directory via LDAP

---

## Terminal Server

---

Telnet

---

SSH v1 and v2

---

---

Rlogin

---

Auto session login

---

LPD, RCP printer

---

MOTD - Message of the day

---

### **Serial machine to Ethernet**

---

[Tunnel raw serial data across Ethernet - clear or encrypted](#)

---

Raw serial data over TCP/IP

---

Raw serial data over UDP

---

[Serial data control of packetized data](#)

---

[Share serial ports with multiple hosts/servers](#)

---

Virtual modem simulates a modem connection - assign IP address by AT phone number

---

Virtual modem data can be sent over the Ethernet link with or without SSL encryption

---

[TruePort com/tty redirector](#) for serial based applications on Windows, Linux, Solaris, SCO HP UX, NCR UNIX and AIX. Perle supports the most comprehensive driver set in the industry. For a complete list of all the latest drivers click [here](#)

---

[TrueSerial](#) packet technology provides the most authentic serial connections across Ethernet ensuring serial protocol integrity

---

RFC 2217 standard for transport of serial data and RS232 control signals

---

Customizable or fixed serial baud rates

---

[Plug-ins allow customer or Perle provided plug-ins for special applications](#)

---

[Software Development Kit \( SDK \) available](#)

---

[Serial encapsulation of industrial protocols such as ModBus, DNP3 and IEC-870-5-101](#)

---

[ModBus TCP gateway enables serial Modbus ASCII/RTU device connection to ModBus TCP](#)

---

[Data logging will store serial data received when no active TCP session and forward to network peer once session re-established - 32K bytes circular per port](#)

---

### **Console Management**

---

[Sun / Oracle Solaris Break Safe](#)

---

Local port buffer viewing - 256K bytes per port

---

---

External port buffering via NFS, encrypted NFS and Syslog

---

Event notification

---

[Manage AC power of external equipment using Perle RPS power management products](#)

---

[Clustering - central console server enables access ports across multiple console servers](#)

---

[Windows Server 2003/2008 EMS - SAC support GUI access to text-based Special Administrative Console](#)

---

[Ping watchdog probes](#) enable customers to power cycle equipment with attached Perle RPS power switches in the event of an unresponsive networking gear

---

### Remote Access

---

Dial, direct serial      PPP, PAP/CHAP, SLIP

---

[HTTP tunneling](#) enables firewall-safe access to remote serial devices across the internet

---

Automatic DNS Update      Utilize DHCP Opt 81 to set IOLAN domain name for easy name management and with Dynamic DNS support , users on the Internet can access the device server by name without having to know its IP address. See [Automatic DNS update](#) support for details

---

[IPSEC VPN client/servers](#)      Microsoft L2TP/IPSEC VPN client ( native to Windows XP)

---

Microsoft IPSEC VPN Client ( native to Windows Vista )

---

Cisco routers with IPSEC VPN feature set

---

Perle IOLAN SDS/STS and SCS models

---

### OA&M ( Operations, Administration and Management )

---

SNMP V3 - read and write, Perle MIB

---

Syslog

---

Perle Device Manager - Windows based utility for large scale deployments

---

Configurable default configuration

---

[Installation Wizard](#)

---

Set a Personalized Factory Default for your IOLANs

---

### Protocols

---

IPv6, IPv4, TCP/IP, Reverse SSH, SSH, SSL, IPSec/IPv4, IPSec/IPv6, L2TP/IPSec, CIDR, RIPV2/MD5, ARP, RARP, UDP, UDP Multicast, ICMP, BOOTP, DHCP, TFTP, SFTP, SNTP, Telnet, raw, reverse Telnet, LPD, RCP, DNS, Dynamic DNS, WINS, HTTP, HTTPS, SMTP, SNMPV3, PPP, PAP/CHAP, SLIP, CSLIP, RFC2217, MSCHAP

**Hardware Specifications - IOLAN SCS Fault Tolerant AC Models**

	<b>SCS8C</b>	<b>SCS8C DAC</b>	<b>SCS16C</b>	<b>SCS16C DAC</b>	<b>SCS32C</b>	<b>SCS32C DAC</b>	<b>SCS48C</b>	<b>SCS48C DAC</b>
Processor	MPC8349E, 400 Mhz, 750 MIPS							
<b>Memory</b>								
RAM MB	64	64	64	64	128	128	128	128
Flash MB	16	16	16	16	16	16	16	16
<b>Interface Ports</b>								
Number of Serial Ports	8	8	16	16	32	32	48	48
Serial Port Interface	RS232 DTE on RJ45							
Sun / Solaris	Sun / Oracle 'Solaris' Safe - no "break signal" sent during power cycle causing costly server re-boots or downtime							
Serial Port Speeds	50bps to 230Kbps with customizable baud rate support							
Data Bits	5,6,7,8, 9-bit protocol support							
Parity	Odd, Even, Mark, Space, None							
Flow Control	Hardware, Software, Both, None							
Serial Port Protection	15Kv Electrostatic Discharge Protection ( ESD )							
Local Console Port	RS232 on RJ45 with DB9 adapter ( provided )							
Network	Dual 10/100/1000-base TX Ethernet RJ45							
	Software selectable Ethernet speed 10/100/1000, Auto							
	Software selectable Half/Full/Auto duplex							

Ethernet Isolation	1.5Kv Magnetic Isolation
Integrated Modem	Optional V.92 modem card available with RJ11 jack
Integrated Wireless	Optional <a href="#">USB Adapter Card</a> for integration of 3rd party wireless USB Modem Sticks (3G) Optional <a href="#">PC Adapter Card</a> for integration of 3rd party wireless PCMCIA cellular cards (GSM/GPRS/3G)
Fiber Support	Perle supports <a href="#">3rd party Gigabit Fiber Cards</a> via the standard PCI Interface Slot. Alternatively, connect a <a href="#">Perle Standalone Media Converter</a> to the IOLAN SCS Ethernet port for Fiber to Ethernet conversion.

Power	SCS8C	SCS8C DAC	SCS16C	SCS16C DAC	SCS32C	SCS32C DAC	SCS48C	SCS48C DAC
Redundant Power		Dual power supply		Dual power supply		Dual power supply		Dual power supply

Power Supply	USA models	IEC320-C13 to NEMA 5-15P line cord
	UK models	IEC320-C13 to BS1363 line cord
	EU models	IEC320-C13 to CEE 7/7 Schuko
	South Africa models	IEC320-C13 to BS546 line cord
	Australia models	IEC320-C13 to AS3112 line cord

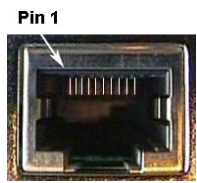
Nominal Input Voltage	110/230v AC							
Input Voltage Range	100-240v AC							
AC Input Frequency	47-63Hz							
Current Consumption @ 100v ( Amps )	0.17	0.20	0.18	0.21	0.19	0.22	0.2	0.23
Current Consumption @ 240v ( Amps )	0.07	0.08	0.08	0.09	0.08	0.09	0.08	0.09



Typical Power Consumption ( Watts )	17	19.5	18	20.5	19	21.5	20	22.5
Power Line Protection	Fast transients: 1 KV (EN61000-4-4 Criteria B)							
	Surge: 2KV (EN61000-4-5 common mode), 1KV (EN61000-4-5 differential and common modes)							
<b>Indicators</b>								
LEDs	Power							
	System Ready							
	Network Link activity							
	Serial: Transmit and Receive data per port							
<b>Environmental Specifications</b>								
Heat Output ( BTU/HR )	58	67	62	70	65	74	69	77
MTBF ( Hours )*	130539	99587	122926	95094	111053	87829	115980	90884
Operating Temperature	0C to 55C, 32F to 131F							
Storage Temperature	-40C to 85C, -40F to 185F							
Humidity	5 to 95% (non condensing) for both storage and operation.							
Case	SECC Zinc plated sheet metal (1 mm)							
Ingress Protection Rating	IP30							
Mounting	1U - 19" rack, front and rear mounting hardware included							
<b>Product Weight and Dimensions</b>								
Weight	3.0 kg	3.2 kg	3.1 kg	3.4 kg	3.2 kg	3.5 kg	3.5 kg	3.6 kg
Dimensions	1U Rack form factor - 26.4 x 43.4 x 4.4 (cm), 10.38 x 17.1 x 1.75 (in)							
<b>Packaging</b>								

Shipping Dimensions	59 x 36 x 9cm							
Shipping Weight	4.0 kg	4.2 kg	4.2 kg	4.4 kg	4.4 kg	4.8 kg	4.5 kg	4.9 kg
<b>Regulatory Approvals</b>								
Emissions	FCC Part 15, Subpart B, Class A							
	CFR47:2003, Chapter 1, Part 15 Subpart B,(USA) Class A							
	ICES-003, Issue 4, February 2004 (Canada)							
	EN55022:1998 + A1:2000 + A2:2003 Class A							
	EN61000-3-2 : 1995, Limits for Harmonic Current Emissions							
	EN61000-3-3 : 1995, Limits of Voltage Fluctuations and Flicker							
Immunity	EN55024:1998 + A1:2001 + A2:2003							
	EN61000-4-2: Electrostatic Discharge							
	EN61000-4-3: RF Electromagnetic Field Modulated							
	EN61000-4-4: Fast Transients							
	EN61000-4-5: Surge							
	EN61000-4-6: RF Continuous Conducted							
	EN61000-4-8: Power-Frequency Magnetic Field							
	EN61000-4-11: Voltage Dips and Voltage Interruptions							
Safety	IEC 60950-1 : 2005 (2nd Edition) + A1 : 2009 and EN 60950-1 : 2006 + A11 : 2009							
	CAN/CSA-C22.2 No. 60950-1-03 and ANSI/UL 60950-1, First Edition April 1st 2003 (Recognized Component)							
Other	<a href="#">Reach, RoHS and WEEE Compliant</a>							
	CCATS - G052929							
	ECCN - 5A992A							
	HTSUS Number: 8471.80.1000							
	Perle Limited Lifetime warranty							

IOLAN DTE



**IOLAN RJ45 Socket**

**Function**

**Direction**

1	RTS	→
2	DTR	→
3	TXD	→
4	GND	—
5	GND	—
6	RXD	←
7	DSR	←
8	CTS	←

RJ45 Socket

( A rolled RJ45 cable will automatically perform DTE to DCE crossover )

[Optional Perle adapters for use with straight thru CAT5 cabling](#)

[Part Numbers for existing customers who want this product with traditional IOLAN pinouts](#)

\*Calculation model based on MIL-HDBK-217-FN2 @ 30 °C

**Hardware Specifications - IOLAN SCS Fault Tolerant 48v DC Models**

	<b>IOLAN SCS8C DC</b>	<b>IOLAN SCS16C DC</b>	<b>IOLAN SCS32C DC</b>	<b>IOLAN SCS48C DC</b>
Processor	MPC8349E, 400 Mhz, 750 MIPS			
<b>Memory</b>				
RAM MB	64	64	128	128
Flash MB	16	16	16	16
<b>Interface Ports</b>				
Number of Serial Ports	8	16	32	48

Serial Port Interfase	RS232 DTE on RJ45
Sun / Solaris	Sun / Oracle 'Solaris' Safe - no "break signal" sent during power cycle causing costly server re-boots or downtime
Serial Port Speeds	50bps to 230Kbps with customizable baud rate support
Data Bits	5,6,7,8, 9-bit protocol support
Parity	Odd, Even, Mark, Space, None
Flow Control	Hardware, Software, Both, None
Serial Port Protection	15Kv Electrostatic Discharge Protection ( ESD )
Local Console Port	RS232 on RJ45 with DB9 adapter ( provided )
Network	10/100/1000-base TX Ethernet RJ45
	Software selectable Ethernet speed 10/100/1000, Auto
	Software selectable Half/Full/Auto duplex
Ethernet Isolation	1.5Kv Magnetic Isolation
Integrated Modem	Integrated V.92 modem - RJ11 jack
Integrated Modem	Optional V.92 modem card available – RJ11 jack
Integrated Wireless	Optional <a href="#">USB Adapter Card</a> for integration of 3rd party wireless USB Modem Sticks (3G) Optional <a href="#">PC Adapter Card</a> for integration of 3rd party wireless PCMCIA cellular cards (GSM/GPRS/3G)
Fiber Support	Perle supports <a href="#">3rd party Gigabit Fiber Cards</a> via the standard PCI Interface Slot. Alternatively, connect a <a href="#">Perle Standalone Media Converter</a> to the IOLAN SCS Ethernet port for Fiber to Ethernet conversion.

### Power

Power Supply	Dual Feed -48v DC A and B Input
Nominal Input Voltage	48 VDC

Input Voltage Range	36-72 VDC			
Current Consumption @ 36v ( Amps )	0.25	0.28	0.45	0.5
Current Consumption @ 48v ( Amps )	0.19	0.21	0.34	0.38
Current Consumption @ 72v ( Amps )	0.13	0.14	0.22	0.25
Typical Power Consumption ( Watts )	9	10	16	18
Power Line Protection	Fast transients: 1 KV (EN61000-4-4 Criteria B) Surge: 2KV (EN61000-4-5 common mode), 1KV (EN61000-4-5 differential and common modes)			
<b>Indicators</b>				
LEDs	Power			
	System Ready			
	Network Link activity			
	Serial: Transmit and Receive data per port			
<b>Environmental Specifications</b>				
Heat Output ( BTU/HR )	31	34	55	62
MTBF ( Hours )*	118622	112256	94603	80743
Operating Temperature	0C to 55C, 32F to 131F			
Storage Temperature	-40C to 85C, -40F to 185F			
Humidity	5 to 95% (non condensing) for both storage and operation.			
Case	SECC Zinc plated sheet metal (1 mm)			

Ingress Protection Rating	IP30
---------------------------	------

Mounting	1U - 19" rack, front and rear mounting hardware included
----------	--

**Product Weight and Dimensions**

Weight	3.0 kg	3.0 kg	3.2 kg	3.5 kg
--------	--------	--------	--------	--------

Dimensions	26.4 x 43.4 x 4.4 (cm), 10.38 x 17.1 x 1.75 (in)			
------------	--	--	--	--

**Packaging**

Shipping Dimensions	59 x 36 x 9cm			
---------------------	---------------	--	--	--

Shipping Weight	4.0 kg	4.0 kg	4.1 kg	4.1 kg
-----------------	--------	--------	--------	--------

**Regulatory Approvals**

Emissions	FCC Part 15, Subpart B, Class A
	CFR47:2003, Chapter 1, Part 15 Subpart B,(USA) Class A
	ICES-003, Issue 4, February 2004 (Canada)
	EN55022:1998 + A1:2000 + A2:2003 Class A
	EN61000-3-2 : 1995, Limits for Harmonic Current Emissions
	EN61000-3-3 : 1995, Limits of Voltage Fluctuations and Flicker

Immunity	EN55024:1998 + A1:2001 + A2:2003
	EN61000-4-2: Electrostatic Discharge
	EN61000-4-3: RF Electromagnetic Field Modulated
	EN61000-4-4: Fast Transients
	EN61000-4-5: Surge
	EN61000-4-6: RF Continuous Conducted
	EN61000-4-8: Power-Frequency Magnetic Field
	EN61000-4-11: Voltage Dips and Voltage Interruptions

---

**Safety**IEC 60950-1 : 2005 (2nd Edition) + A1 : 2009 and  
EN 60950-1 : 2006 + A11 : 2009CAN/CSA-C22.2 No. 60950-1-03 and ANSI/UL 60950-1,  
First Edition April 1st 2003 (Recognized Component)

---

**Other**[Reach, RoHS and WEEE Compliant](#)

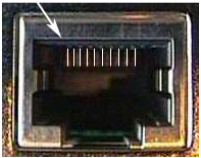
CCATS - G052929

ECCN - 5A992A

HTSUS Number: 8471.80.1000

Perle Limited Lifetime warranty

---

**IOLAN DTE****Pin 1****RJ45 Socket**

<b>IOLAN RJ45 Socket</b>	<b>Function</b>	<b>Direction</b>
1	RTS	→
2	DTR	→
3	TXD	→
4	GND	—
5	GND	—
6	RXD	←
7	DSR	←
8	CTS	←

( A rolled RJ45 cable will automatically perform DTE to DCE crossover )

[Optional Perle adapters for use with straight thru CAT5 cabling](#)

[Part Numbers for existing customers who want this product with traditional IOLAN pinouts](#)

---

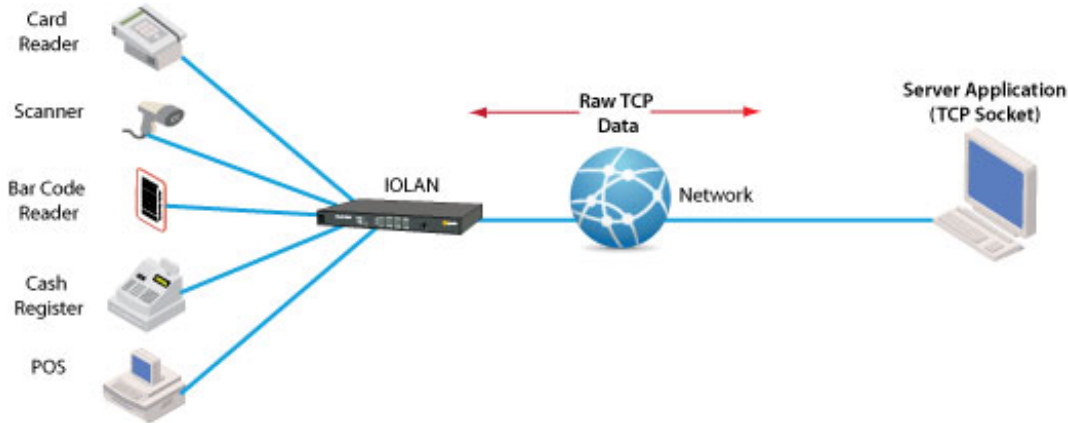
\*Calculation model based on MIL-HDBK-217-FN2 @ 30 °C

**TCP**

---

## Using RAW TCP Sockets

A raw TCP socket connection which can be initiated from the serial-Ethernet device or from the remote host/server. This can either be on a point to point or shared basis where a serial device can be shared amongst multiple devices. TCP sessions can be initiated either from the TCP server application or from the Perle IOLAN **serial-Ethernet** adapter.



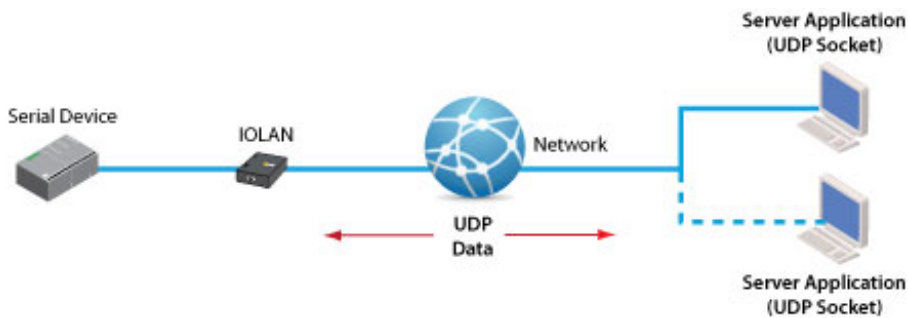
---

## UDP

---

### Using Raw UDP Sockets

For use with UDP based applications, Perle IOLANs can convert serial equipment data for transport across UDP packets either on a point to point basis or shared across multiple devices.



---

## Console Server

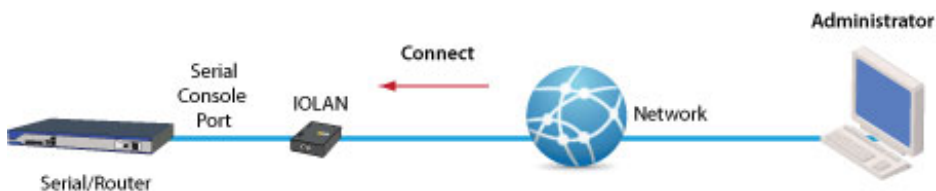
---



---

## Console Management

For access to remote console ports on routers, switches, etc, Perle IOLAN's enable administrators secure access to these RS232 ports via inband Reverse Telnet / SSH or out of band with dial-up modems. Perle IOLAN models with integrated modems are available.



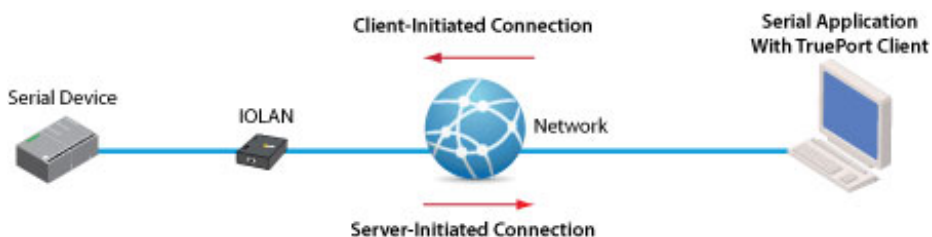
---

## COM/TTY

---

### Connect Serial-based Applications with a COM/TTY Port Driver

Serial ports can be connected to network servers or workstations running Perle's TruePort software operating as a virtual COM port. Sessions can be initiated either from the Perle IOLAN or from TruePort.



---

## Tunneling

---

### Serial Tunneling between two Serial Devices

Serial Tunneling enables you to establish a link across Ethernet to a serial port on another IOLAN. Both IOLAN serial ports must be configured for Serial Tunneling (typically one serial port is configured as a Tunnel Server and the other serial port as a Tunnel Client).



---

## Virtual Modem

---

### Virtual Modem

Enables the serial-Ethernet adapter to simulate a modem connection. When connected to the IOLAN and initiates a modem connection, the IOLAN starts up a TCP connection to another IOLAN serial-Ethernet adapter configured with a Virtual Modem serial port or to a host running a TCP application.

