



MODULAR MOUNT

MM-1000 SERIES FOR NEW INSTALLATIONS

The challenge for retailers, warehouses and distribution centers when implementing technology is how to maximize limited space to mount that technology, while ensuring it is ergonomic and easy to use.

The exciting news is that the new MM-1000 Modular Mounting solution from ENS Group gives the user complete solution options to manage the space at their checkout or workstation.

The MM-1000 Modular Mount incorporates a new generation of engineered materials for a durable & strong, yet modern looking POS solution. Designed to be great value, easy to order, install.



MM-1000 FEATURES

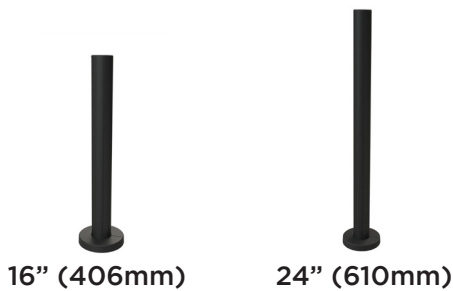
- ✓ Uses the latest Engineered Polyamide Alloy materials for durability and industry leading design for today's markets
- ✓ Innovative cable management that is an industry first to hide and protect cables
- ✓ The ENS Pole allows full range of Device Installation heights on all four sides
- ✓ Tool-less tilt tensions adjustments on your Payment Terminal Mount
- ✓ Product Configurator to easily order exactly what you need

[Watch Product Video](#)[Product Configurator](#)

MM-1000 SERIES FOR NEW INSTALLATIONS

LET OUR PRODUCT CONFIGURATOR CREATE YOUR POS SOLUTION

POLE & BASE OPTIONS



MONITOR MOUNT OPTIONS



Single Pivot with Channel Mount OR Channel Arm*



Double Pivot with Channel Mount OR Channel Arm*

*Extension Arm is 8" (200mm) long

PAYMENT MOUNT OPTIONS



Payment Mount

*Extension Arms are 8" (200mm) long

AND IF LOCKING IS REQUIRED -



SUPPORTS ALL MAJOR PAYMENT DEVICES



MM-1000 SERIES FOR NEW INSTALLATIONS

LET OUR PRODUCT CONFIGURATOR CREATE YOUR POS SOLUTION

PRINTER MOUNT OPTIONS



Printer Mount - Small
(Use with Channel Arm* only)

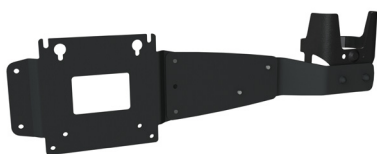
OR...



Printer Mount - Large
(Use with Channel Arm* only)

*Extension Arm is 8" (200mm) long

SCANNER MOUNT OPTION



Scanner Mount

Attaches to
75mm/100mm
VESA Monitors
from 15" (381mm) to
20" (508mm) wide

ACCESSORIES - LARGE CABLE BUNDLE COVER KIT



This kit is ideal under All-In-One Monitors or for other applications where multiple large cables need to be routed down the ENS Pole. It includes enough cable covers to accommodate any ENS Pole and includes a custom base cover with a pass-through opening. This kit accommodates cable bundles up to 1" (25mm) in diameter.

EXAMPLE CONFIGURATIONS



Single Monitor
Mount



Dual Monitor
Mount with
Printer Mount



Dual Monitor
Mount with
Payment Mount

MM-1000 SERIES FOR NEW INSTALLATIONS

PRODUCT NUMBERS AND DATA

MM-10-116

- ✓ 16" (406mm) Tall Pole with Base, 1.75" (45mm) Diameter Pole
- ✓ Shipping Dimensions: 4.82" L X 4.81" W X 21.25" D
- ✓ Shipping Weight (lbs/kg): 2.50/1.13
- ✓ Note: Our Free Standing Base option can be used with the 16" (406mm) Pole for Single Monitor Mount configurations only. Maximum allowed weight 25 lb (11.3 kg) front justified. Order product number 367-4005-04-2.



MM-10-124

- ✓ 24" (610mm) Tall Pole with Base, 1.75" (45mm) Diameter Pole
- ✓ Shipping Dimensions: 4.82" L X 4.81" W X 29.25" D
- ✓ Shipping Weight (lbs/kg): 3.50/1.59



MM-10-202 (for payment only)

- ✓ Collar Arm 8" (200mm), use with existing 45mm Dia Poles, Rotates up to 320 degrees
- ✓ Shipping Dimensions: 5.13" L X 3.62" W X 8.0" D
- ✓ Shipping Weight (lbs/kg): 3.00/1.36
- ✓ Use for positioning your Payment Terminal Mount away from your existing pole and adding side to side movement



MM-10-203

- ✓ Channel Mount, use with New ENS MM-10-1XX Poles only
- ✓ Shipping Dimensions: 4.56" L X 4.56" W X 3.56" D
- ✓ Shipping Weight (lbs/kg): .36/.16
- ✓ Use for attaching Single or Double Pivot Monitor Mount close to ENS Pole MM-10-1XX



MM-1000 SERIES FOR NEW INSTALLATIONS

PRODUCT NUMBERS AND DATA

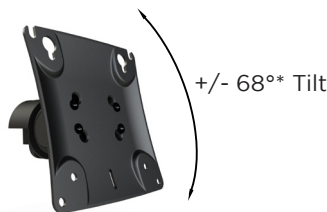
MM-10-204

- ✓ Channel Arm 8" (200mm), use with New ENS MM-10-1XX Poles only
- ✓ Shipping Dimensions: 5.13" L X 3.62" W X 8.0" D
- ✓ Shipping Weight (lbs/kg): .73/.33
- ✓ Use for positioning your Payment Terminal and Printer Mount away from your existing pole. May also be used to extend your Monitor Mount away from the pole
- ✓ Required for all Payment and Printer Mounts



MM-10-301

- ✓ Monitor Mount, Single Pivot (up/down), for 75/100mm VESA compliant Monitors
- ✓ Shipping Dimensions: 4.56" L X 4.56" W X 3.56" D
- ✓ Shipping Weight (lbs/kg): .89/.40
- ✓ Max Monitor Weight: 15 lbs



MM-10-302

- ✓ Monitor Mount, Double Pivot (up/down and Left/Right), for 75/100mm VESA compliant Monitors
- ✓ Shipping Dimensions: 4.56" L X 4.56" W X 5.56" D
- ✓ Shipping Weight (lbs/kg): 1.16/.53
- ✓ Max Monitor Weight: 15 lbs



MM-10-401

- ✓ Payment Terminal Mount, Includes Plinth for all Tailwind FlexiPole Backplates
- ✓ Shipping Dimensions: 5.06" L X 4.62" W X 8.06" D
- ✓ Shipping Weight (lbs/kg): .76/.34
- ✓ Add any FlexiPole Backplate to complete this product
- ✓ Note: To mount an ENS Stand Metal Conversion, use product MM-10-402 & contact ENS Sales for proper Conversion part number



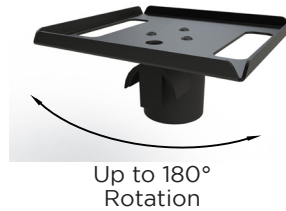
*Tilt/rotation limits are subject to Monitor size and position on pole.

MM-1000 SERIES FOR NEW INSTALLATIONS

PRODUCT NUMBERS AND DATA

MM-10-501

- ✓ Printer Mount, small, for Printers with bases up to 5.7" (145mm) Wide X 6" (153mm) Deep
- ✓ Shipping Dimensions: 7.13" L X 7.13" W X 3.88" D
- ✓ Shipping Weight (lbs/kg): 1.19/.54



MM-10-502

- ✓ Printer Mount, large, for Printers with bases up to 7.8" (198mm) Wide X 11.26" (286mm) Deep
- ✓ Shipping Dimensions: 12.63" L X 8.13" W X 3.88" D
- ✓ Shipping Weight (lbs/kg): 2.61/1.18



MM-10-601

- ✓ Scanner Mount, for Hand-held Scanners - works with VESA Monitors 15" (381mm) to 20" (508mm) wide
- ✓ Shipping Dimensions: 5.18" L X 4.50" W X 10.38" D
- ✓ Shipping Weight (lbs/kg): 3.14/1.42



MM-10-901

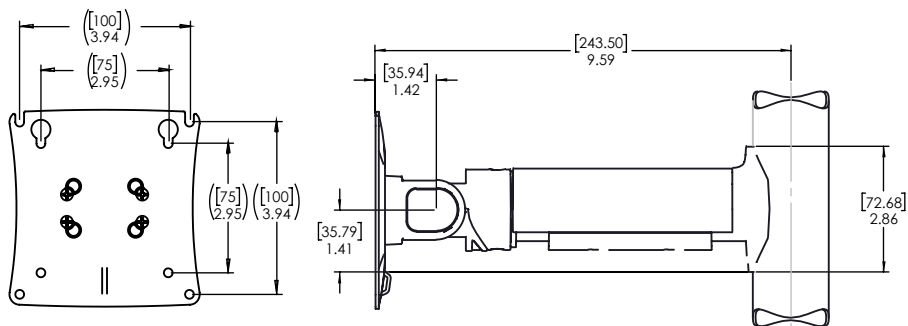
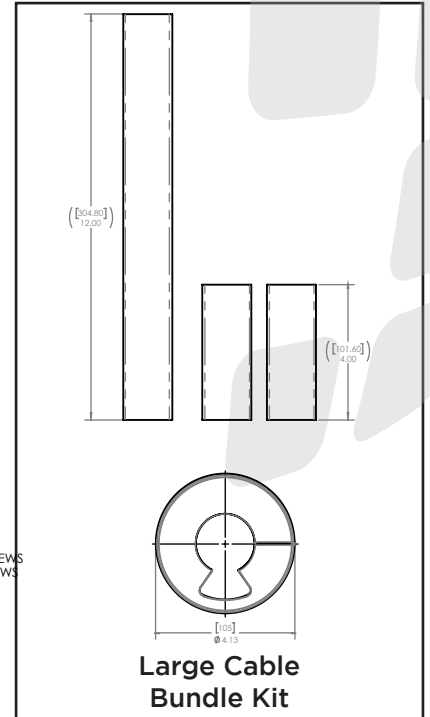
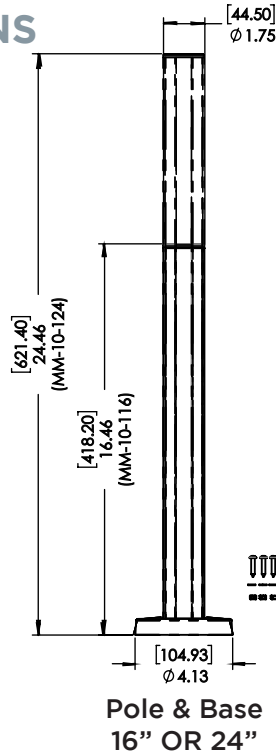
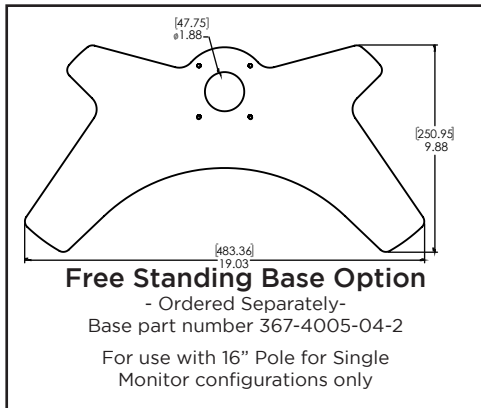
- ✓ Large Cable Bundle Cover Kit, use with New ENS MM-10-1XX Poles only. Works for any length Pole.
- ✓ Shipping Dimensions: 12" L X 4" W X 4" D
- ✓ Shipping Weight (lbs/kg): 0.50/0.23



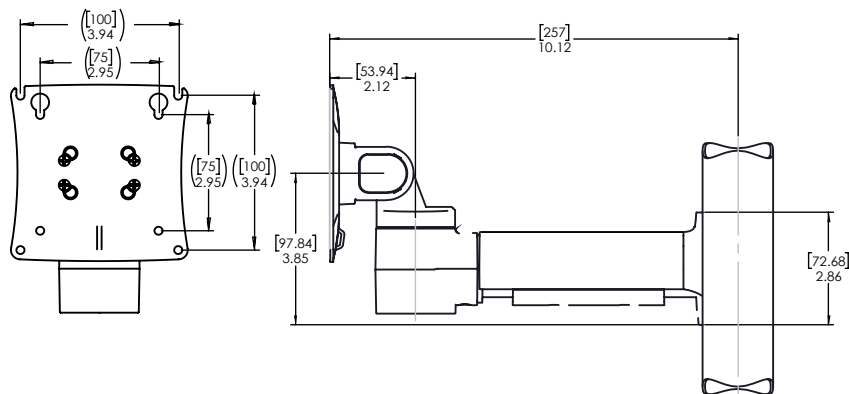
*Tilt/rotation limits are subject to Monitor size and position on pole.

MM-1000 SERIES FOR NEW INSTALLATIONS

PRODUCT DIMENSIONS



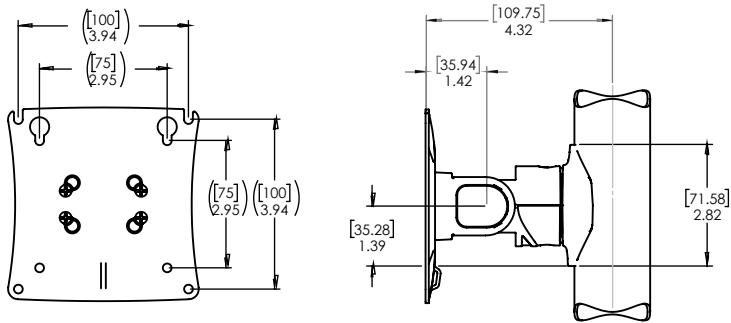
Single Pivot Monitor Arm



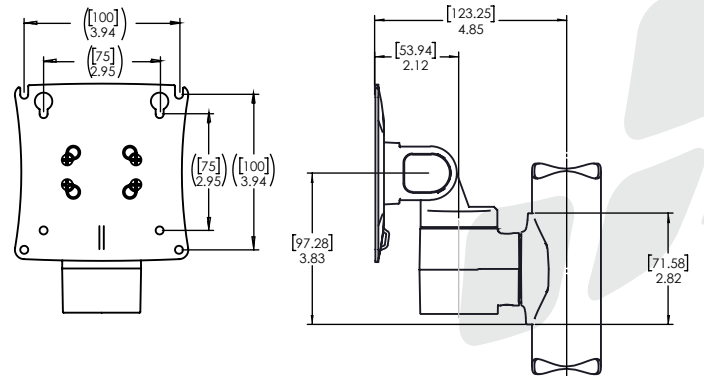
Double Pivot Monitor Arm

MM-1000 SERIES FOR NEW INSTALLATIONS

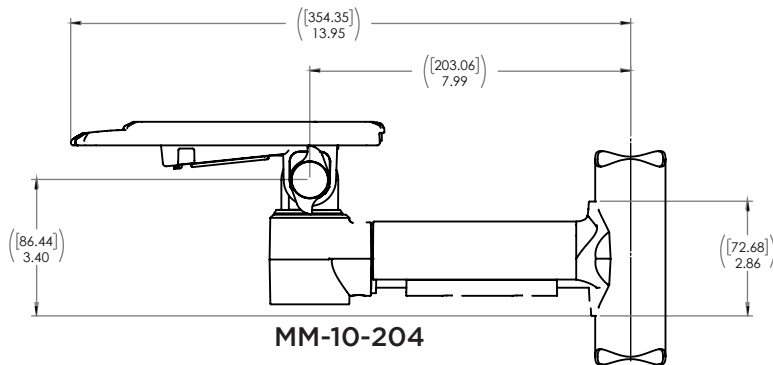
PRODUCT DIMENSIONS



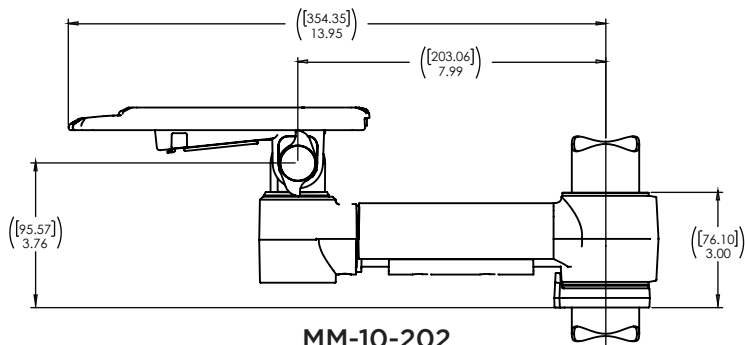
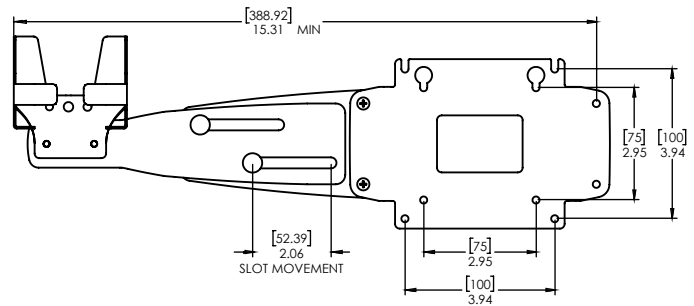
Single Pivot Monitor Mount



Double Pivot Monitor Mount

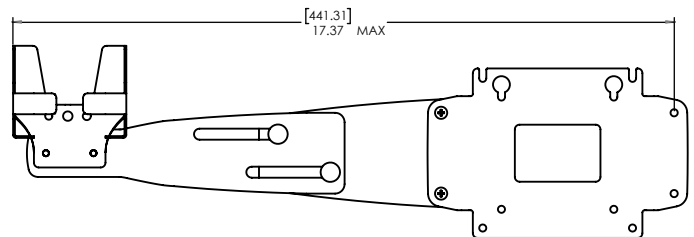


MM-10-204



MM-10-202

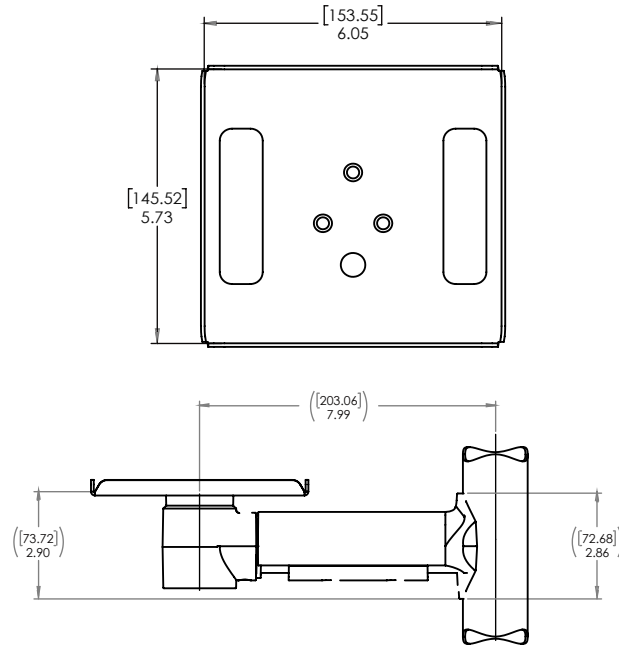
Payment Terminal Mount



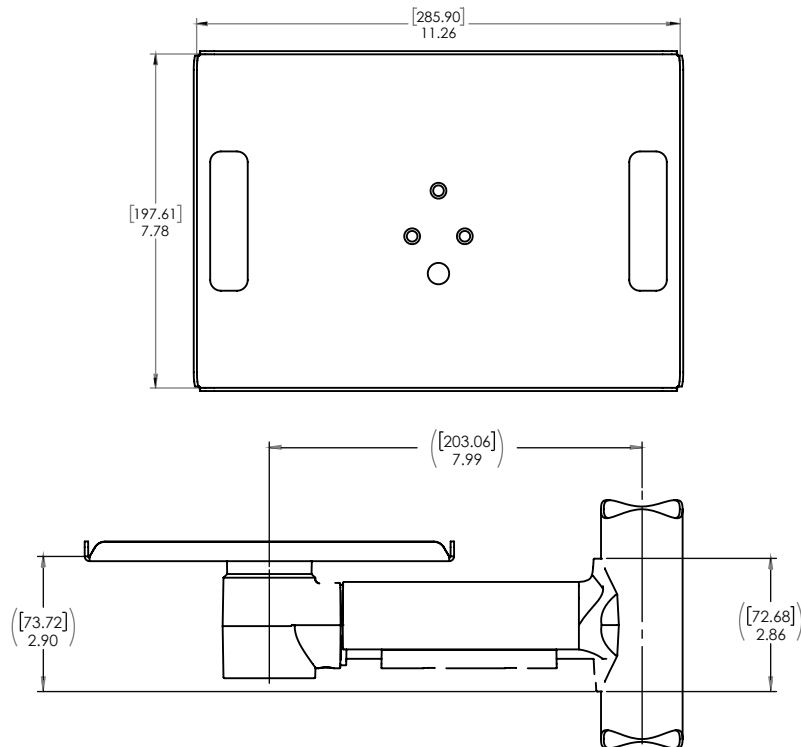
Scanner Mount

MM-1000 SERIES FOR NEW INSTALLATIONS

PRODUCT DIMENSIONS

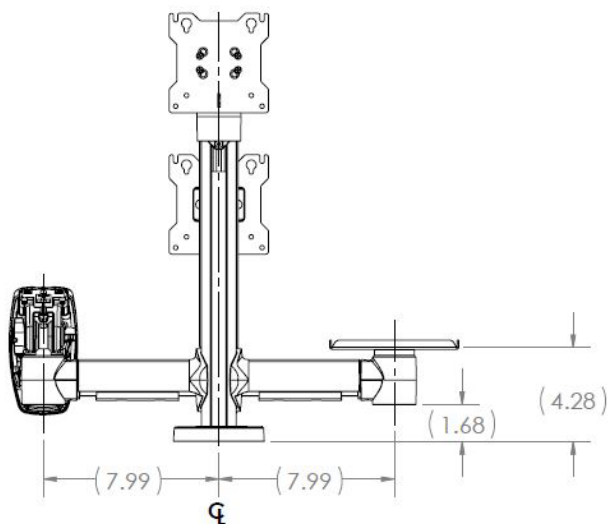
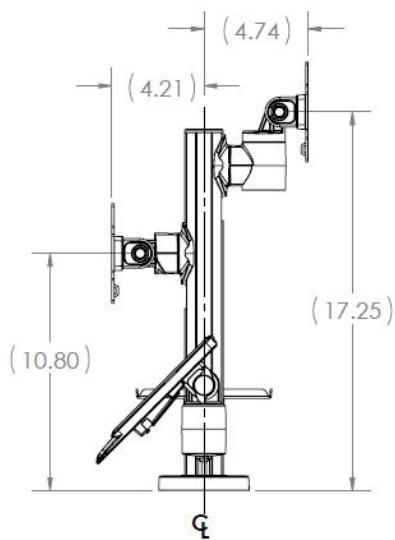
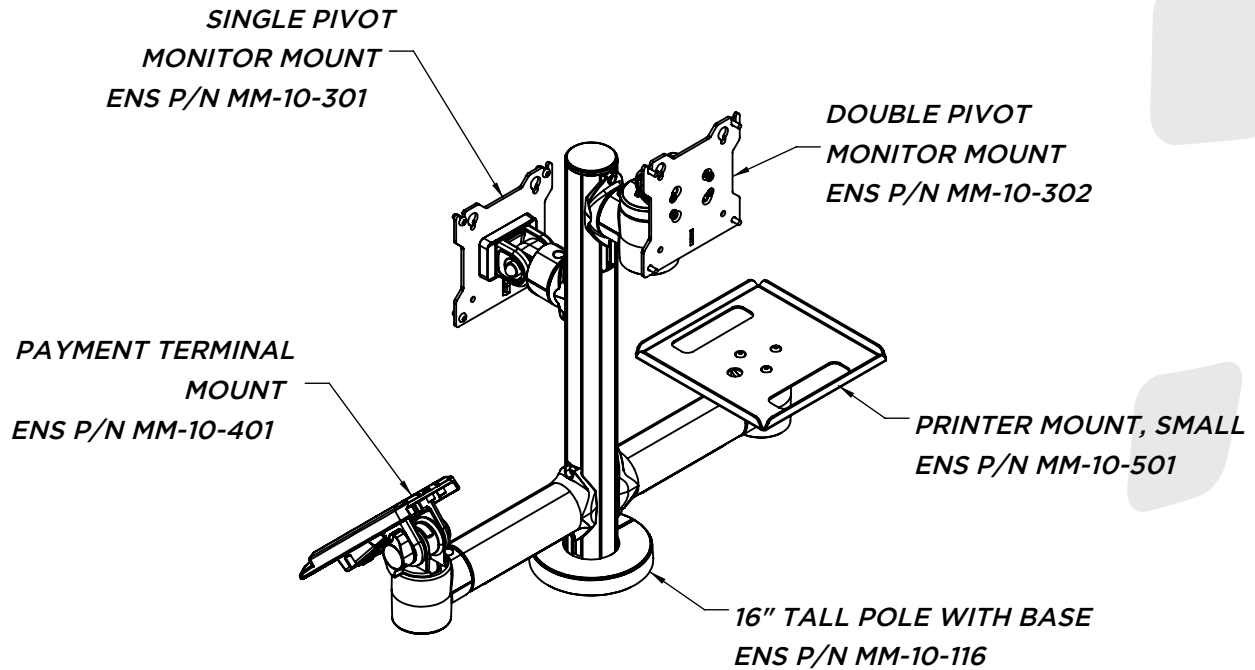


Printer Mount, Small



Printer Mount, Large

16" SAMPLE CONFIGURATION



24" SAMPLE CONFIGURATION

