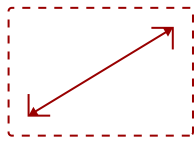


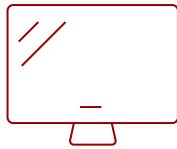
ID2456-C1 - 24" INTERACTIVE PEN DISPLAY WITH NMP760 CHROMEBOX

Key Features

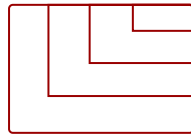
- All-in-One Solution
- Advanced Touch Interactivity and Accurate Handwriting
- Chromebox



24
DISPLAY



PANEL



RESOLUTION



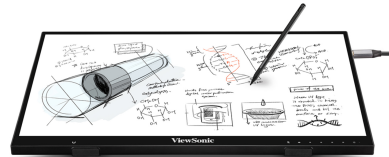
PCAP touch



4096 levels of pressure sensitivity



MPP2.0 active stylus



EFFORTLESS PRECISION

Product Description

Ideal for education environments, this digital podium bundle includes a ID2456 24" interactive pen display and a NMP760 Chromebox that are ideal for a digital podium setup. Simply connect the ID2456 to the Chromebox and an existing classroom projector or large format display. The ID2456 interactive pen display allows teachers to annotate directly on their presentations, sketch ideas and manipulate content. Meanwhile, the students can view the lesson on the connected projection screen or digital display at the front of the classroom.

Specifications

More Information

Display Type

LCD

Screen Size

24

Viewable Area (in.)	24
Display Resolution	1920 x 1080
Aspect Ratio	16:9
Static Contrast Ratio	1,000:1
Brightness	350 cd/m2
Response Time (Typical GTG)	14ms
Viewing Angles	178° horizontal, 178° vertical
Panel Surface	Anti-Glare type, Hardness 6H
Internal Speakers	3W (x2)
HDMI 1.4 In	1
HDMI Out	1
VGA	1
3.5mm Audio In	1
3.5mm Audio Out	1
USB 3.0	2
USB 3.1 Type C	1
USB B Touch Port	1
Intel® OPS Slot In (80-pin)	1
Voltage	100-240 VAC
Consumption (typical)	33
Stand-by	<5
Temperature	32-104° F (0 - 40° C)
Humidity (non-condensing)	10-85%
Touch Technology	Capacitive
Touch Points	10-Point Touch
Net (lbs)	11
Gross (lbs)	17
Net (kg)	4.99
Gross (kg)	7.71
Packaging (in.)	25.39 x 4.92 x 16.14
Physical (in.)	13.11 x 1.7 x 21.44
Packaging (mm)	644.9 x 124.9 x 409.9
Physical (mm)	332.9 x 43.18 x 544.6
VESA Compatible	100 x 100 mm
Warranty	3-year limited warranty on parts, labor and backlight, onsite warranty
Recycle/Disposal	Please dispose of in accordance with local, state or federal laws.

PACKAGE CONTENTS

ID2456 display, Power cable, Type-C cable, HDMI cable, USB cable, MPP2.0 ACP, Pen tether, Pen tip, Quick Start Guide

Regulations

cTUVus, FCC, ENERGY STAR 7.0, Mexico Energy, CE, CB, RoHS, ErP, WEEE



Contact Sales

ViewSonic.com

888.881.8781

email:

salesinfo@viewsonic.com