

Eaton 93PM UPS

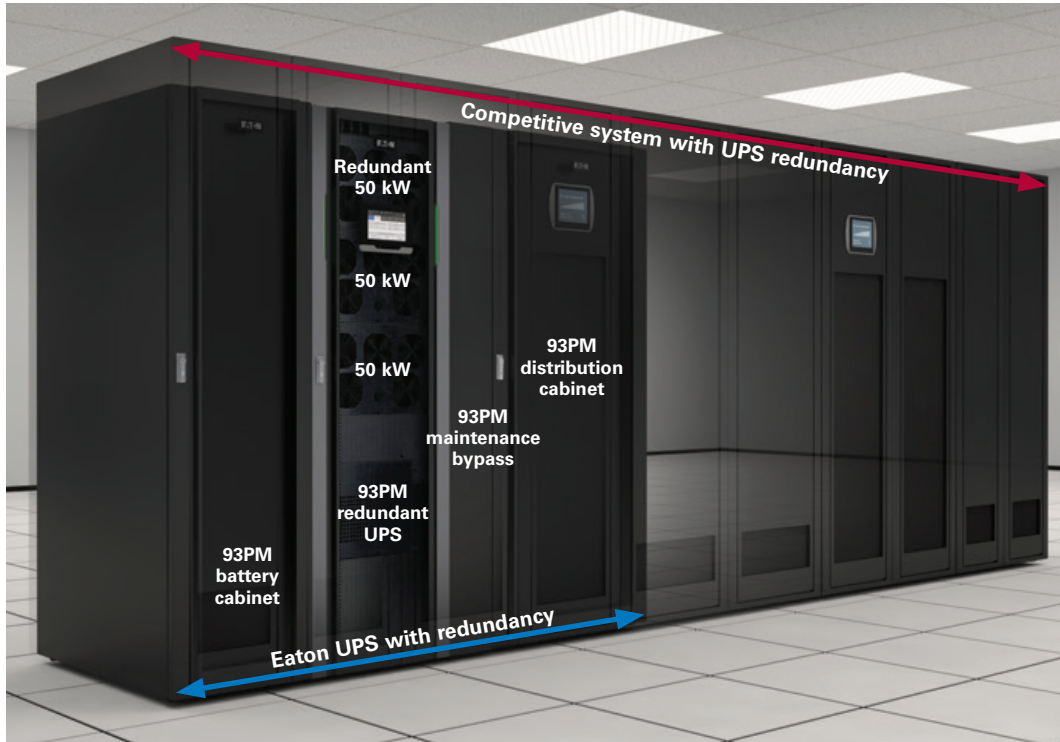
Efficient. Scalable. Innovative.



Powering Business Worldwide

93PM features and benefits

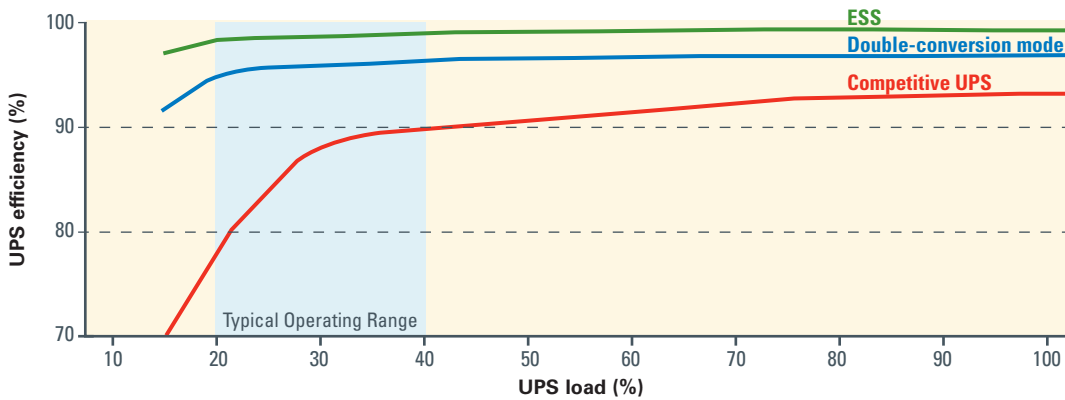
The Eaton 93PM UPS combines unprecedented efficiency and reliability with an eye-catching design. A space-saving, scalable and flexible device that's as easy to deploy as it is to manage, it's the perfect three-phase white or grey space solution for today's data center.



The 93PM's vertical scalability, internal redundancy and compact footprint design

1. Lowest TCO (Total cost of ownership)

- Conserves valuable data center floor space with its compact footprint and internal redundancy design
- Reduces cost and unexpected future growth risks with its vertical scalability, enabling you to scale as you grow
- Reduces power and cooling OPEX through industry-leading energy-efficiency
 - 99% efficiency with ESS
 - Up to 97% efficiency in double-conversion mode



Eaton 93PM efficiency in double conversion and ESS

The 93PM ESS energy cost savings pay for the UPS in less than 3 years. Calculate your 93PM savings with ESS at Eaton.com/ESS.

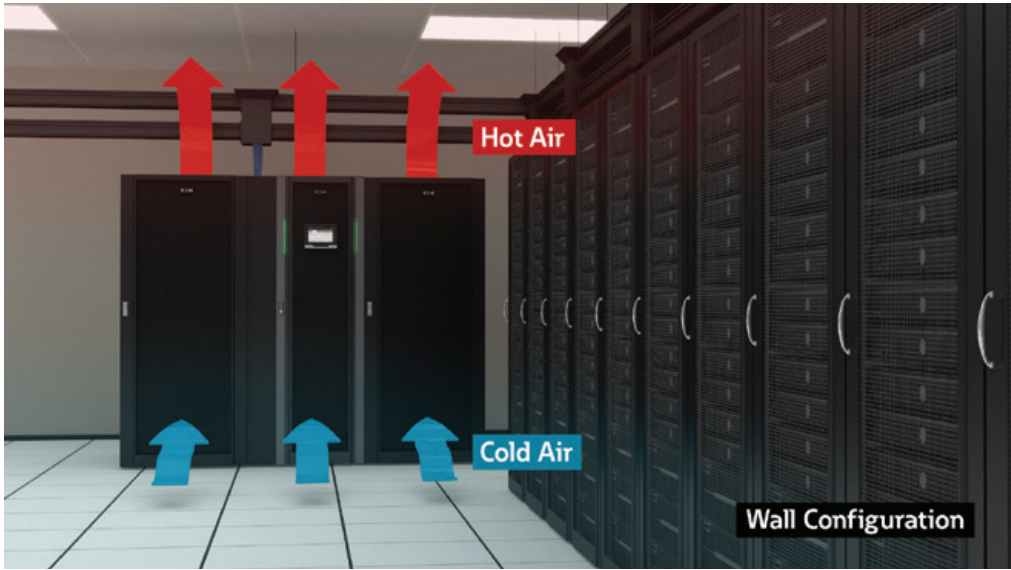
Table showing 100 kW efficiency savings comparison

| Load % | Leading competitor efficiency ** | 93PM ESS efficiency | 93PM ESS annual savings(\$)* | 93PM double-conversion efficiency | 93PM double-conversion annual savings (\$)* |
|--------|----------------------------------|---------------------|------------------------------|-----------------------------------|---|
| 25% | 84.0% | 98.4% | \$6,868 | 95.8% | \$5,780 |
| 50% | 90.6% | 98.9% | \$7,303 | 96.8% | \$5,574 |
| 75% | 92.5% | 99.1% | \$8,515 | 97.0% | \$5,931 |
| 100% | 93.0% | 99.1% | \$10,436 | 96.8% | \$6,656 |

* Savings calculated using \$0.10 kW/hr. and 80% cooling ratio (currency in US dollars)

** Leading competitor does not offer ESS mode

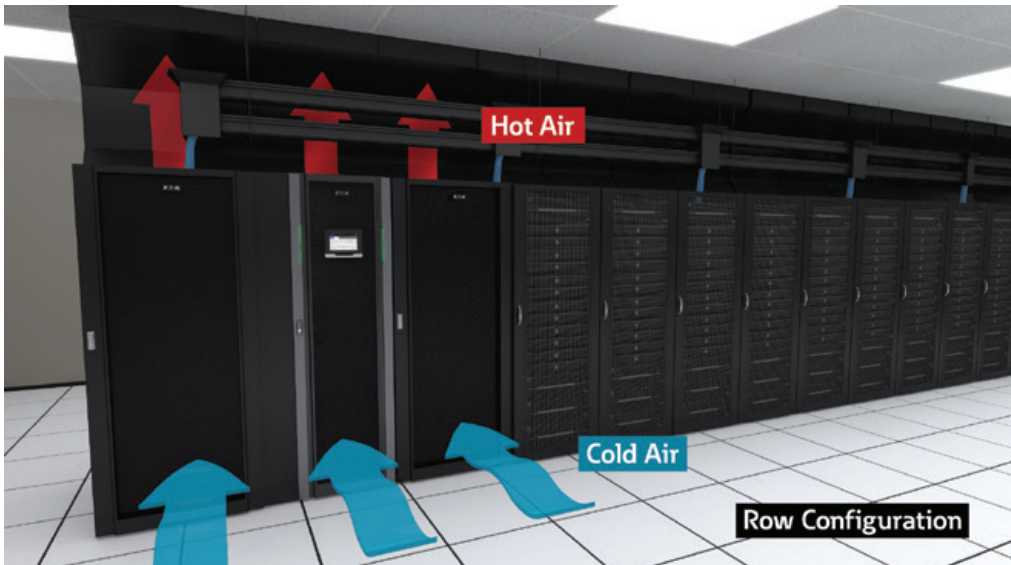
The 93PM double-conversion energy savings pay for the UPS in less than 4 years.



2. Easy deployment

- Maximizes deployment flexibility by providing flexible configurability

The 93PM supports front-to-top ventilation, ideal for against the wall configuration.



Front-to-top ventilation feature also makes the 93PM a perfect fit for in-row configurations that support slim chimneys.



The 93PM also supports front-to-back ventilation making it great for hot/cold aisle configuration.

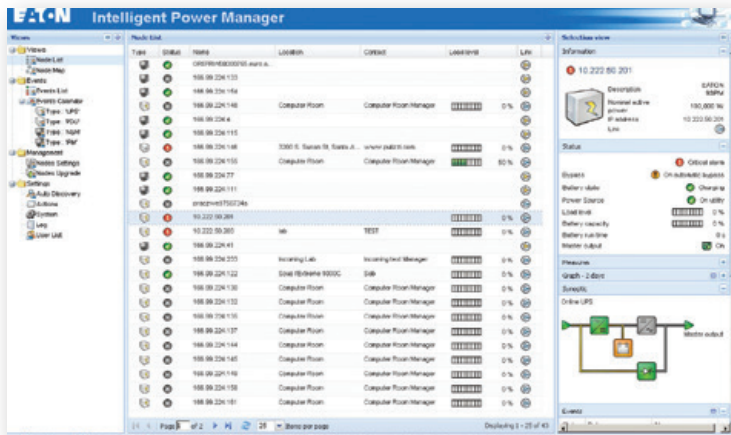
LED light bars



Green light bars showing healthy UPS.



Red light bars showing alerts on system. Yellow light bars indicate battery and bypass status.



Intelligent Power Manager seamlessly integrates into the major virtualization platforms, including VMware®, Citrix®, Red Hat® and Microsoft® Systems Center.



Communication card

Connectivity options:

- Power Xpert Gateway Mini-slot communication card
- Industrial relay card

3. Easy management

- Provides easier access to detailed status information through its large, user-friendly LCD touchscreen interface

With the 93PM's graphical LCD interface you can track stats on energy savings, battery time, outage tracking, load profiling and much more.

The green/yellow/red LED light-bars make system status visible from a distance in data centers.

- Integrates with the leading virtual platforms through its full suite of power management and connectivity software

Designed for the most advanced IT environments, the 93PM supports optional communication cards that allow remote access via the HTTP(S), SNMP, MODBUS TCP/IP, Modbus RTU and BACnet IP protocols. In addition, Eaton's Power Xpert® software and Intelligent Power® Software Suite give you all the tools you need to manage power devices in your physical or virtual environment. Learn more at Eaton.com/intelligentpower.

- Increases uptime through its 24x7 remote monitoring and reporting capabilities

Eaton's eNotify Remote Monitoring Service provides 24x7 real-time monitoring of the 93PM and alerts service technicians to take necessary measures when a problem is detected. Learn more at Eaton.com/enotify.

Eaton's comprehensive portfolio

Integrated data center products and services



A Overhead Cable Management Solutions

B Thermal Management Solutions

C Busway

D ePDUs

E Aisle based Power Management Solutions (UPSs)

F Rack Monitoring Solutions

G Rack-based Power Management Solutions (UPSs)

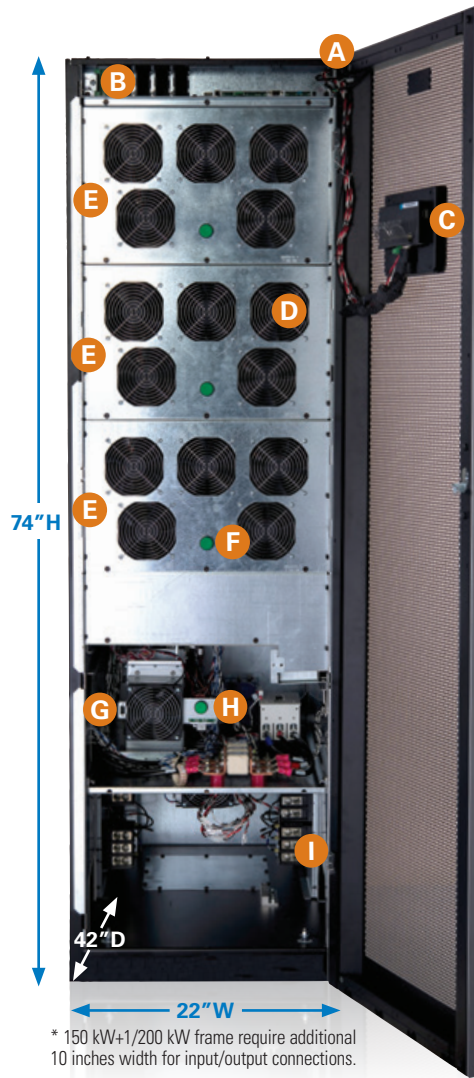
H IT enclosures

I Customized Service plans

J Management Software

The functional core of the 93PM UPS

- A Top cable entry**
comes with sidecar/maintenance bypass options (sidecar option is required for top cable entry)
- B Communications and connectivity**
 - Built-in device and host USB
 - Five alarm inputs and dedicated EPO
 - Alarm relay output
 - Four communication slots
- C Color touchscreen LCD interface**
- D Serviceable redundant fan assembly**
- E Replaceable power modules**
(50 kW) with independent control and power
- F Soft start controls**
- G Modular static switch assembly**
(independent power and control)
- H Redundant bypass control**
- I Input/output connections**



Front View



- 99% ESS efficiency
- 97% double-conversion efficiency

* 150 kW+1/200 kW frame require additional 10 inches width for input/output connections.

Open front view of the unit

Eaton 93PM UPS technical specifications*

Power modules

| | |
|---------------------|--|
| Power offering (kW) | 50, 50+1, 100, 100+1, 150, 150+1, 200** (Derates available in 10 kW increments) |
|---------------------|--|

General characteristics

| | |
|---|---------------|
| Efficiency in Energy Saver System (ESS) | 99% |
| Efficiency in double-conversion mode | Up to 97% |
| Parallel capability | 8 distributed |

Input characteristics

| | |
|--------------------------|---------------------------|
| Voltage | 480V (208V with IAC-D) |
| Voltage range | +10% / -15% |
| Frequency range | 50/60 Hz |
| Power factor | > .99 |
| Input current distortion | < 3% @ 100% load capacity |

Battery

| | |
|-----------------|--------------------------|
| Battery voltage | 432V |
| Charging method | ABM® or float technology |

Output

| | |
|-------------------------|--|
| Voltage | 480V (208V with IAC-D) |
| Regulation | ±1% steady state |
| Voltage THD | <1% (100% linear load); <5% (non-linear load) |
| Load power factor range | .8 leading to .8 lagging without de-rating |

Certification

| | |
|--------|-------------------------------|
| Safety | UL1778, cUL |
| EMC | FCC Part 15 subpart B class A |
| Surge | IEC 61000-4-5 |

Optional accessories

- External slim maintenance bypass
- Integrated distribution cabinet (with input and output transformer options)
- Integrated parallel tie cabinets
- Integrated battery cabinet (small and large)

*Due to continued improvements, specifications are subject to change.

**+1 provides 50 kW of internal redundancy at full load.

Eaton
1000 Eaton Boulevard
Cleveland, OH 44122 USA
Eaton.com

© 2014 Eaton
All Rights Reserved
Printed in USA
BR153033EN
July 2014

EATON
Powering Business Worldwide

Eaton, ABM, Intelligent Power and Power Xpert are registered trademarks of Eaton.

All other trademarks are property of their respective owners.

Learn more at
Eaton.com/93PM