



Max Mixture of **80** Inputs and Outputs

Up to 8 HDMI Ports & Max 80 In/Out Video Wall Controller

VW-CG

CONTROLLER SERIES



4K **1080P**
ULTRA HD **FULL HD**

Gvision's VW-CG series is a video wall controller designed for security video wall and multi-screen display installations that require a balanced number of HD video captures and HD video outputs. The VW-CG series has unique capture and graphic cards of up to 8 HDMI ports and maximum mixture of 80 inputs/outputs, providing flexible solutions for the professional av industry as well as security industry. Advanced PCIe switching chip in the industry. Each signal has a dedicated transmission channel, which ensures the real-time display of images of all signals. And a service board can be inserted into any service board slot, which allows users to apply boards flexibly. It Supports custom EDID, allowing users to customize the resolution of input video sources.



4K UHD
 (Option)



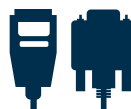
1080p HD
 Display



Multiple
 HDMI In/Out



Embedded
 Linux OS



Max. Mixture
 80 In/Output



24/7
 Operation



Redundant
 Power (Option)



3-Year
 Warranty

Up to **8 HDMI** Ports / **Max.** Mixture of **80** In/Outputs

WALL SYSTEM



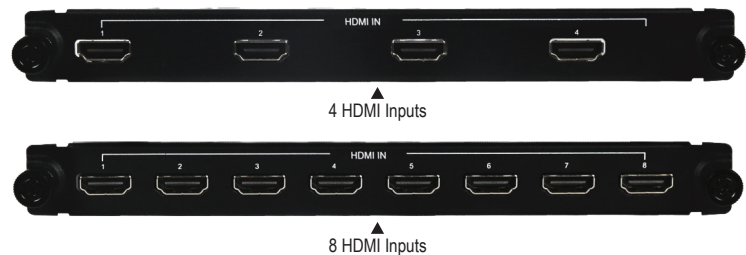
HDMI IN/OUT	RESOLUTION	4K UHD (OPTION)	OPERATION	POWER OPTION	WARRANTY
	1080P FULL HD	4K ULTRA HD			
				REDUNDANT	3 YEAR

FEATURES

- FPGA architecture and GVISION's core image processing strategy provide excellent image processing performance. Embedded Linux OS ensures 24/7 stable operation and protects the device from hackers and viruses.
- Plug-in design for boards provides flexible board application and makes the upgrade, expansion and maintenance of the system easier.
- Advanced PCIe switching chip in the industry. Each signal has a dedicated transmission channel, which ensures the real-time display of images of all signals. And a service board can be inserted into any service board slot, which allows users to apply boards flexibly.
- Resolution Real-time Total Adaptation technology. Each device supports sixteen video walls with different resolutions, and the resolution can be customized.
- Supports window opening, roaming and zooming at any position on the video wall. The unique video processing algorithm ensures that the image quality is not affected during zooming.
- Supports "Picture-in-Picture" mode, which allows users to watch videos on top of other windows, presenting flexible layouts.
- Supports saving the video wall layout as a scene for later use. Up to 64 scenes can be saved with scene sequence.
- Intelligent temperature control design of fans keeps the heat dissipation and noise at an ideal level, and ensures the noise is no more than 30 dBA in conference rooms.

- Intelligently monitors board power supply and board temperature. When abnormal board power supply or temperature is detected, the board will automatically shut down to safeguard device operation.
- Supports custom EDID, allowing users to customize the resolution of input video sources.
- Supports connecting up to 5 board enclosures.

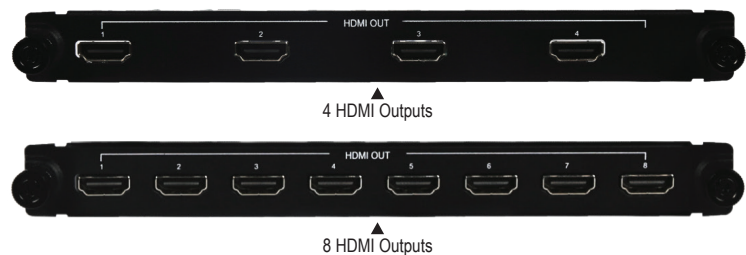
CAPTURE CARD



FEATURES

- 4-Port / 8-Port HDMI / **Max. Mixture of 80 Inputs** Board Module
- **Input Resolution:** XGA:1024 x 768@60HZ / 720P:1280 x 720@50HZ / 720P:1280 x 720@60HZ / SXGA:1280 x 1024@60HZ / WXGA+:1440 x 900@60HZ / UXGA:1600 x 1200@60HZ / 1080P:1920 x 1080@50HZ / 1080P:1920 x 1080@60HZ / WUXGA:1920 x 1200@60HZ

GRAPHIC CARD



FEATURES

- 4-Port / 8-Port HDMI / **Max. Mixture of 80 Outputs** Board Module
- **Input Resolution:** XGA:1024 x 768@60HZ / 720P:1280 x 720@50HZ / 720P:1280 x 720@60HZ / SXGA:1280 x 1024@60HZ / WXGA+:1440 x 900@60HZ / UXGA:1600 x 1200@60HZ / 1080P:1920 x 1080@50HZ / 1080P:1920 x 1080@60HZ / WUXGA:1920 x 1200@60HZ

Up to **8 HDMI** Ports / **Max.** Mixture of **80** In/Outputs

SPECIFICATIONS

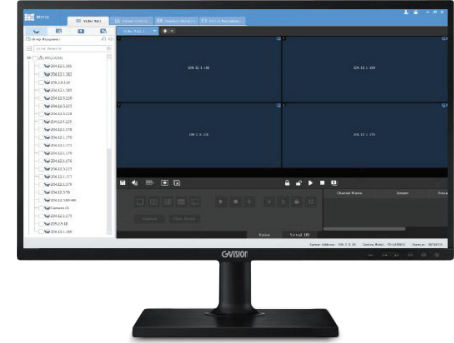
Specifications subject to change without any notice

Video Wall Controller	
CHASSIS	
Dimensions (Inch/mm)	17.59" × 18.54" × 5.19" / 447mm × 471mm × 132mm
Weight (Lbs/Kg)	31.08 lbs (14.1 Kg)
Power Consumption	< 350W
Service Board Slots	10
Mixed Insertion	Support
Control Board Interface	1x network, 1x Console serial, 3x RS232/RS485 serial, 2x USB, 1x RST key, 1x SWAP Hot-swappable key
Operation Voltage	100V~ 240V AC 50Hz/60Hz
Temperature	0°C ~ +50°C (Operation) / -40°C ~ +70°C (Storage)
Humidity	0% ~ 90% (Operation) / 0% ~ 95% (Storage)
BOARD TYPE	
Signal Input	HDMI x4 / HDMI x8 / Max. mixture of 80 Inputs
Signal Output	HDMI x4 / HDMI x8 / Max. mixture of 80 Outputs
Input Resolution	XGA:1024x768@60HZ / 720P:1280x720@50HZ / 720P:1280x720@60HZ / SXGA:1280x1024@60HZ / WXGA:1440x900@60HZ / UXGA:1600x1200@60HZ / 1080P:1920x1080@50HZ / 1080P:1920x1080@60HZ / WUXGA:1920x1200@60HZ
SCREEN CONTROL	
Number of Windows	Each output can open 8 windows on average.
	The window opening resources of all output can be shared
	Up to 32 windows are allowed for each output
Roam and Overlay	The windows can roam at any position on the video wall.
	Supports window overlay.
	Supports picture-in-picture mode.
One-click Layout	Create a video wall with an M x N for fixed layout.
Multiple Video Walls	Create & manage 4 video walls w/ different configurations.
Scene Management	Up to 64 scenes can be saved
ADVANCED	
Signal Delay	< 100ms
Output Sync	Fully synchronized
Power Failure Protection	The current running services and layout will be retained and restored after restart.
Seamless Switching	Support

Capture Card	
GENERAL	
Number of Port	4-Port / 8-Port HDMI / Max. mixture of 80 inputs
Input Resolution	XGA:1024x768@60HZ / 720P:1280x720@50HZ / 720P:1280x720@60HZ / SXGA:1280x1024@60HZ / WXGA+:1440x900@60HZ / UXGA:1600x1200@60HZ / 1080P:1920x1080@50HZ / 1080P:1920x1080@60HZ / WUXGA:1920x1200@60HZ
Customized Resolution	Maximum width 2048/ Maximum height 4032
Consumption	< 6W (4-Port) / < 15W (8-Port)

Graphic Card	
GENERAL	
Number of Port	4-Port / 8-Port HDMI / Max. mixture of 80 Outputs
Input Resolution	XGA:1024x768@60HZ / 720P:1280x720@50HZ / 720P:1280x720@60HZ / SXGA:1280x1024@60HZ / WXGA+:1440x900@60HZ / UXGA:1600x1200@60HZ / 1080P:1920x1080@50HZ / 1080P:1920x1080@60HZ / WUXGA:1920x1200@60HZ
Customized Resolution	Maximum width 2048 / Maximum height 2048
Consumption	< 8W (4-Port) / < 15W (8-Port)

WALL CLIENT SOFTWARE



FEATURES

- Supports other manufacturers' IPC and NVR.
- Live view, sequence display, play signal source, open windows by one click, split window, window roaming, virtual LED, scenes and scene plans.
- Supports small pixel pitch LED, turn on/off Uniview screens automatically at a set time, turn on/off manually or with a delay.
- **The customer license will be included**

EZWall Client Software	
FUNCTION	
Device management	Add, edit, delete devices on LAN / automatic search
	Open device's Web interface from the client
	View device status, including status of NVR-connected IPCs
	Supports Onvif
Video wall	Add, edit, delete video walls / supports small pixel pitch LED
	Bind decoding CH automatically, bind decoding CH by one-click, splice screens, custom screen layout
	Scene, scene plan (execute by set time interval or 24-hr schedule)
	One click (1/3/4/5/6/7/8/9/10/13/16/17/25/32/36/64 and MxN custom layout), right mouse button, or coordinates Window roaming and overlay, double-click window to view in full screen mode, renumber windows, window lock/unlock, display on top/bottom, and view window/split window info
	Start videos in batches on one or multiple screens
	Sequence display videos in one or multiple windows
	Play PC's video signals through server's DVI or VGA interface to the video wall.
	Device group, including default group and custom group
	Virtual LED: LED coordinates, custom LED content, font style, font size, font color, character spacing and alignment, background color and transparency, moving speed and mode; enable/disable virtual LEDs
	Supports audio output and volume adjustment
Sequence Resource	Add, edit, and delete sequence resource
Screen Control	Turn on/off screen automatically at a set time
	Turn on/off screen manually
	Turn on/off screen with delay
Client Configuration	Automatic login to EZWall and Windows
	Automatically display selected window on top
	Play video with set or adaptive stream type
REQUIREMENTS	
OS	32-bit or 64-bit Microsoft Windows 7, 8, 10
CPU	Intel Core i5 2.3GHz or higher
RAM	4GB or higher