

POWERSCAN™ 9600 SERIES

Handheld industrial scanners for 1D/2D barcode reading with top flexibility



ULTRA-RUGGED WITH NEW BALANCED ERGONOMICS!

The PowerScan family of bar code readers are the ultimate industrial handheld scanners designed and constructed to withstand the toughest environmental conditions. The PowerScan 9600 imagers have an ultra-rugged design, an ergonomic shape with well-balanced weight to reduce operator stress during daily activities.

MOBILITY ENHANCES PRODUCTIVITY

The PowerScan PM9600 cordless model further enhances the operator efficiency and safety with Datalogic's STAR Cordless System™. Bidirectional radio communication and display allow users to receive immediate feedback avoiding any risk of mistakes.

The PowerScan PBT9600 cordless model is enriched with Bluetooth® 5.0 that can be paired to any device supporting Bluetooth connections, or to the Bluetooth base station.

The BC9600 base/charger has a modular design and is available with multiple interface plug-ins for standard and industrial communication, such as RS-232, USB, Standard Ethernet and Industrial Ethernet protocols.

WIRELESS CHARGING

The PowerScan 9600 scanner features Datalogic's Wireless Charging System. Based on inductive-charging technology, Datalogic's Wireless Charging System eliminates battery contacts and pins that often get dirty, bent, or broken over time – and this removes a key point of failure for devices used in industrial and retail functions.

THREE OPTIC OPTIONS TO FULFILL ANY CUSTOMER NEED

The PowerScan 9600 area imagers are available in three different optics, to satisfy any customer need. The Standard Range optic is ideal for most of the applications requiring barcode reading at intuitive distance; the High Performance optic adds the capability to decode high density barcodes together with an increased depth of field on standard 1D/2D codes; the Document Capture model is thought for Wide Angle code reading and Document Capture applications.

FEATURES

- Snappy omnidirectional reading on 1D, stacked and 2D codes, postal codes
- Standard Range and High Performance models
- Water and Particulate Sealing Rating: IP65 and IP67; Cradle IP65; 10 million hits trigger
- Center of gravity design
- Modular cradle design allowing interface expansion
- White light illumination
- High visibility OLED Display with 4-Keys /16-Keys keypad options
- Standard Range, High Performance and Document capture optics
- Datalogic's 3GL™ (3 Green Lights) technology and loud beeper for good-read feedback
- Datalogic's Motionix™ motion-sensing technology
- Wireless Charging reducing total cost of ownership
- EASEOFCARE Service Plans offer a wide range of service options to protect your investment, ensuring maximum productivity and ROI.

INDUSTRIES - APPLICATIONS

- **Manufacturing Shop Floor:**
 - Work-in-Progress
 - Sub-Assembly
 - Component Tracking
 - Quality Control
 - Time and Cost Analysis
 - Machine Replenishment /Configuration
 - Line Inventory Control
- **Warehouse and Logistic Centers:**
 - Shipping / Receiving
 - Parcel Preparation
 - Picking / Put Away
 - Automatic Sorting Back-Up
 - End of Line Sorting



POWERSCAN 9600 SERIES

TECHNICAL SPECIFICATIONS

WIRELESS COMMUNICATIONS	
PowerScan PM9600	Datalogic STAR Cordless System Radio Frequency: 433 MHz; 910 MHz; Effective Radiated Power: 433 MHz: < 10 mW; 910 MHz: < 50 mW; Point-to-Point/Multi-Point Configuration; Max. Readers per Radio Receiver: 16; Two Way Communications. Radio Range (Open Air): 433 MHz: 150 m / 492 ft low speed; 100 m / 328 ft high speed 910 MHz: 230 m / 754 ft low speed; frequency hopping; 180 m / 590 ft high speed
PowerScan PBT9600	Bluetooth Wireless Technology Radio Frequency: 2.4 GHz; Profiles: SPP (Serial Port Profile) and HID (Human Interface Device); Protocol: Bluetooth 5.0 Certified. Class 1, Class 2 and Class 3; Radio Range (Open Air): 100.0 m / 328.0 ft; Range distances are measured using the base station. Range with connection to other Bluetooth peripherals. Security: Data Encryption; Scanner Authentication
DECODING CAPABILITY	
1D / Linear Codes	Auto discriminates all standard 1D codes including GS1 DataBar™ linear codes.
2D Codes	Aztec Code; China Han Xin Code; Data Matrix; MaxiCode; Micro QR Code; QR Code; Dot Code
Postal Codes	Australian Post; British Post; China Post; IMB; Japanese Post; KIX Post; Planet Code; Postnet; Royal Mail Code (RM4SCC)
Stacked Codes	EAN/JAN Composites; GS1 DataBar Composites; GS1 DataBar Expanded Stacked; GS1 DataBar Stacked; GS1 DataBar Stacked Omnidirectional; MacroPDF; MicroPDF417; PDF417; UPC A/E Composites
Digital Watermarking	Digimarc Barcodes (HP and DC models)
ELECTRICAL	
Current	Corded models: Operating (Typical): SR: 200mA @ 5V; 120mA @ 12V. HP/DC: 280mA @ 5V / 140mA @ 12V. Standby/Idle (Typical): 187mA @ 5V / 92mA @ 12V. Cordless models: Operating 480 mA @ 3.7 V. Charging (Typical) < 15 W. Cradle BC96xx only: 150 mA @ 5 V (Operative)
Input Voltage	Corded models: 5 - 30 VDC ± 5% Cordless models: Host powered: 5V DC ± 5% or 10 - 30 VDC External power supply: 10 - 30 VDC ± 5%
Battery	Battery Type: Lithium-Ion: 3350 mAh Charge time @ 12 VDC: 2.5 hours to charge up to 95%, 3.2 hours to charge 100%, External Power. Reads per charge: 80,000
ENVIRONMENTAL	
Ambient Light	0 - 100,000 lux
Drop Resistance	Withstands 50 drops from 2.5 m / 8.2 ft @ 20 °C / 68 °F; Withstands 50 drops from 2.0 m / 6.6 ft @ -20 °C / -4 °
Trigger Resistance	Withstands 10 million hits
ESD Protection (Air Discharge)	20 kV
Humidity (Non-Condensing)	0 - 95%
Particulate and Water Sealing	IP67 and IP65; Cradle IP65 (specific models)
Temperature	Operating: -20 to 50 °C / -4 to 122 °F Storage/Transport: -40 to 70 °C / -40 to 158 °F Charging: 0 to 40 °C / 32 to 104 °F nominal; 0 to 35 °C / 32 to 95 °F ideal
INTERFACES	
Interfaces	RS-232 / USB / Ethernet and Industrial Protocols
PHYSICAL CHARACTERISTICS	
Colors Available	Yellow/Black
Dimensions H x L x W	19.8 x 14.0 x 7.9 cm / 7.8 x 5.5 x 3.1 in
Display	PM9600-D/DK. 1.8" OLED graphic display; Font Dimensions: User selectable.
Keyboard	PM9600-D: 4 Keys, PM9600-DK: 16 Keys; Configurable
Weight	PD9630: 318 g / 11.2 oz, PBT9600: 415 g / 14.6 oz, PM9600: 425 g / 15.0 oz, PM9600-D: 445 g / 15.7 oz, PM9600-DK: 455 g / 16.0 oz
READING PERFORMANCE	
Imager Sensor	1280 x 800 pixels
Light Source	Aiming: 630 - 680 nm VLD Illumination: White LED reading light
Print Contrast Ratio (Minimum)	15%
Reading Angle	Pitch: +/- 52°; Roll (Tilt): 360°; Skew (Yaw): +/- 52°
Field of View	SR and HP: 38° H, 24° V
Reading Indicators	Beeper (Adjustable Tone and Volume); Datalogic's 3GL™ (Three Green Lights) technology for good-read feedback; Datalogic 'Green Spot'; Dual Good Read LEDs; Vibration.
Resolution (Maximum)	SR/DC: 1D Codes: 3 mil; 2D Codes: 6 mil HP: 1D Codes: 2.5 mil; 2D Codes: 4 mil
READING RANGES	
Typical Depth of Field	Minimum distance determined by symbol length and scan angle. Printing resolution, contrast, and ambient light dependent.
SR Models Code 128 5 mils: 6.4 to 30.9 cm / 2.5 to 12.2 in 20 mils: 4 to 103.7 cm / 1.6 to 40.8 in 40 mils: 5.5 to 175 cm / 2.2 to 68.9 in EAN/UPC 13 mils: 4 to 67.5 cm / 1.5 to 26.5 in DataMatrix 10 mils: 6 to 30 cm / 2.5 to 11.8 in	HP Models Code 128 2.5 mils: 6.3 to 11.5 cm / 2.5 to 4.5 in 5 mils: 3.8 to 41 cm / 1.5 to 16.1 in 40 mils: 5.5 to 242.9 cm / 2.1 to 95.6 in EAN/UPC 13 mils: 4 to 120 cm / 1.5 to 40.2 in PDF417 10 mils: 0.5 to 46.1 cm / 0.2 to 18.1 in DataMatrix 10 mils: 4.2 to 32 cm / 1.6 to 12.6 in
SAFETY & REGULATORY	
Agency Approvals	The product meets necessary safety and regulatory approvals for its intended use. The Regulatory Addendum for this product can be referred to for a complete list of certifications.
Environmental Compliance	Complies to China RoHS; Complies to EU RoHS; Complies to R.E.A.C.H.
Laser Classification	Caution Laser Radiation - Do not stare into beam CDRH Class II; IEC 60825 Class 2
LED Classification	IEC 62471 LED Class: Exempt
UTILITIES	
Datalogic Aladdin™	Datalogic Aladdin configuration program is available for download at no charge.
OPOS / JavaPOS	OPOS and JavaPOS Utilities are available for download at no charge.
WARRANTY	
Warranty	3-Year Factory Warranty

ACCESSORIES

Base Stations / Chargers



BC9630 Base station/charger Multi-Interface

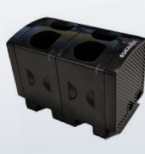
BC9631 Base station/charger Multi-Interface, IP65

Battery



RBP-PM96 Removable battery

Multi-Battery Charger



MC-P096-M2 Multi Battery Charger 2 slots

MC-P096-M4 Multi Battery Charger 4 slots

MC-P096-E2 Extension modules 2 slots

Holder



HLD-P096 Desk/Wall Holder (HLD-9600)

© 2022-2023 Datalogic S.p.A. and/or its affiliates. • All rights reserved. Without limiting the rights under copyright, no part of this documentation may be reproduced, stored in or introduced into a retrieval system, or transmitted in any form or by any means, or for any purpose, without the express written permission of Datalogic S.p.A. and/or its affiliates. • Datalogic and the Datalogic logo are registered trademarks of Datalogic S.p.A. in many countries, including the U.S. and the E.U. • PowerScan, Motionix, 3GL, Datalogic STAR Cordless System and Datalogic Aladdin are trademarks of Datalogic S.p.A. and/or its affiliates, registered in many countries, including the U.S. and the E.U. • The Bluetooth word mark and logos are owned by Bluetooth SIG, Inc. and any use of such marks by Datalogic Group companies is under license. • All other trademarks and brands are property of their respective owners • Product specifications are subject to change without notice. •
DS-POWERSCAN9600-EN Rev A 20230317