

4XEM USB-C Gen.2 NVMe External SSD Enclosure

4XEM Part- 4XST338C



Introducing the 4XEM USB-C Gen.2 NVMe External SSD Enclosure – a great choice for speed, reliability, and convenience for your storage needs. This powerhouse is designed to accommodate PCIe NVMe M.2 SSDs, delivering cutting-edge performance in a sleek package. With space for a single drive and fixed installation, it seamlessly adapts to your requirements without the need for a fan or heatsink.

Experience lightning-fast data transfers with USB 3.1 Gen 2 technology operating at an impressive 10 Gbps via the USB Type-C host connectors. The advanced RealTek RTL9210 chipset ensures seamless communication with your drives.

Performance is paramount, and this enclosure delivers. While the theoretical maximum bandwidth reaches 1.25 Gbps, real-world performance typically offers sequential read and write speeds of 1000MBps each. Keep in mind that factors such as host processor, SSD type, and shared bus influence actual performance.

**4XEM Products Are Available At Your Favorite Online Retailers**

**WWW.4XEM.COM**

**Contact Todd Schaus 4XEM sales Rep  
1-866-999-4936 Ext.104    tschaus@4xem.com**

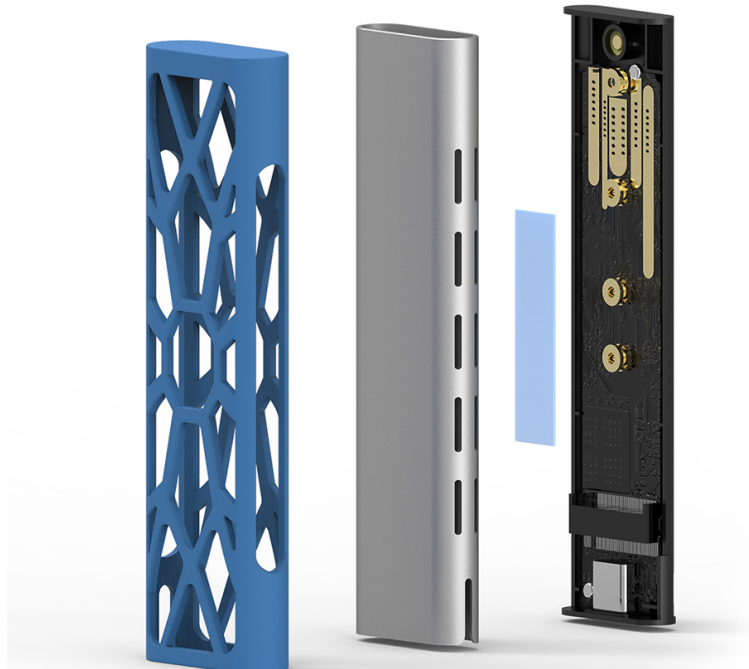


## Features:

- Detachable USB Type-C Connector Cable
- Able to be independent no software or drivers required
- Compatible with 2230/2242/2260/2280mm NVMe SSD lengths
- Supports maximum theoretical bandwidth of 1.25 Gbps
- USB Bus powered
- LED Indicators for Power/Activity
- Comes with Travel Pouch
- Compatible with Windows, Mac OS X

## Application

- Home Office
- Office
- Mobile
- Storage expansion



**4XEM Products Are Available At Your Favorite Online Retailers**



Warranty Information	Warranty	1 Year
Features/Hardware	Compatible Drive Types	PCIe NVMe M.2 SSD
	Number of Drives	1
	Drive Installation	Fixed
	Fan(s)	No
	Heatsink	No
	UASP Support	Yes
	TRIM Support	Yes
	4Kn Support	Yes
	Chipset ID	RealTek - RTL9210
	Connector(s) & Performance	Operating Mode
Host Data Line Speed		10 Gbps
Host Connectors		USB Type-C
Drive Connectors		M.2 ('M' Keyed)
Drive Operating Mode		NVMe (PCIe Gen3 x2 Lanes)
	Maximum Data Transfer Rate*	1.25 GBps*
Software	OS Compatibility	OS independent; No software or drivers required
Physical Characteristics	Color	Grey
	Shell Material	Aluminum/Plastic
	LED Indicators	Power/Activity: Blue
	Cable Type	Detachable
	Cable Length	17.32 in [440 mm]
	Supported Drive Lengths	2230/2242/2260/2280
	Max Drive Height	0.10 in [2.5 mm]
	Product Height	0.40 in [10.1 mm]
	Product Width	1.14 in [28.9 mm]
	Product Length	4.34 in [110.2 mm]
Weight of Product (Empty)	1.13 oz [32 g]	
Weight of Product (Occupied)	1.34 oz [38 g]	
Power	Power Source	Bus Powered
	Power Consumption	7W (5V @ 1.5A)
Environmental	Operating Temperature	32°F to 104°F [0°C to 40°C] @ 10%-90% RH (Non-Condensing)
	Storage Temperature	14°F to 158°F [-10°C to 70°C] @ 10%-90% RH (Non-Condensing)
Packaging Information	Package Type	Box
	Package Height	6.05 in [153.6 mm]
	Package Width	2.79 in [70.8 mm]
	Package Length	1.42 in [36.0 mm]
	Shipping (Package) Weight	3.95 oz [112 g]
Special Notes / Requirements	Notes	"1.25 GBps is the theoretical maximum bandwidth available. Data throughput will be less due to overhead. Actual performance will also vary due to factors such as host processor, SSD used, and other devices sharing the same bus, etc. Real world performance is typically 1000MBps sequential read and 1000MBps sequential write. Not compatible with double sided SSDs or SSDs with integrated heatsink. Occupied weight measured with WD Black SN750 500GB SSD."

\* Product appearance and specifications are subject to change without notice.

\* Same day shipping is only available for orders shipping within the United States.

