

PERFORMANCE

Processor

Intel® Core™ i7-12700T, 12C (8P + 4E) / 20T, P-core 1.4 / 4.6GHz, E-core 1.0 / 3.4GHz, 25MB

Graphics

Integrated Intel UHD Graphics 770

Chipset

Intel Q670 chipset

Memory

1x 16GB SO-DIMM DDR4-3200

Memory Slots

Two DDR4 SO-DIMM slots, dual-channel capable

Max Memory

Up to 64GB DDR4-3200

Storage

1x 256GB SSD M.2 2280 PCIe® 4.0 NVMe®

Storage Support

Up to two drives, 1x 2.5" HDD + 1x M.2 SSD

- 2.5" HDD up to 1TB
- M.2 SSD up to 2TB

Optical

None

Audio Chip

High Definition (HD) Audio, Realtek® ALC256VB codec

Speakers

2Wx1

Power Supply

135W 89% Adapter

DESIGN

Keyboard

USB Traditional Keyboard, Black, English

Mouse

USB Calliope Mouse, Black

Expansion Slots

Two M.2 slots (one for WLAN, one for SSD)

Case Color

Black

Stand

Floor Stand

Adapter Cage

None

Toolless Chassis Screw

None

Dust Filter

None

Mounting

None

Form Factor

Tiny (1L)

Dimensions (WxDxH)

Dimensions	Models
Tiny only	179 x 182.9 x 36.5 mm with rubber feet (7.05 x 7.2 x 1.44 inches with rubber feet)
Tiny & ODD	204.2 x 186.6 x 64 mm with rubber feet (8.04 x 7.35 x 2.52 inches with rubber feet)

Weight

Models	Weight
Tiny only	Around 1.25 kg (2.76 lbs)
With VESA mount & ODD box	Around 1.74 kg (3.84 lbs)

CONNECTIVITY

Ethernet

Integrated 100/1000M

WLAN + Bluetooth®

Intel AX201 11ax, 2x2 + BT5.2

Front Ports

- 1x USB 3.2 Gen 2
- 1x USB 3.2 Gen 2 (Always On and 5V@2.1A charging)
- 1x USB-C® 3.2 Gen 1 (support data transfer and 5V@0.9A charging)
- 1x headphone / microphone combo jack (3.5mm)

Rear Ports

- 1x USB 2.0
- 1x USB 3.2 Gen 1
- 2x USB 3.2 Gen 2
- 1x HDMI® 2.1 TMDS
- 1x DisplayPort™ 1.4

Kensington® Cable Lock

None

Chassis Intrusion Switch

Chassis Intrusion Switch

MANAGEABILITY

System Management

Non-vPro

SERVICE

Base Warranty

3-year, Onsite

Included Upgrade

3Y Premier Support Upgrade from 3Y Onsite (5WSOU26647)

CERTIFICATIONS

Green Certifications

- EPEAT™ Gold
- ENERGY STAR® 8.0
- ErP Lot 3
- TCO Certified 9.0
- RoHS compliant

Other Certifications

- TÜV Rheinland® Low Noise
- TÜV Rheinland Ultra Low Noise

Mil-Spec Test

MIL-STD-810H military test passed (Low Pressure [Altitude], High Temperature, Low Temperature, Temperature Shock, Humidity, Sand and Dust, Vibration, Shock, Fungus, Solar Radiation)

SOFTWARE

Operating System

Windows® 11 Pro 64, English

Bundled Software

None

MODEL

TopSeller	: Yes	Announce Date	: 2022-02-22
EAN / UPC / JAN	: 196378797311	End of Support	: 2028-09-22

- 1x Ethernet (RJ-45)

Optional Rear Ports (configured)

1x HDMI

Monitor Cable

None

SECURITY & PRIVACY

Security Chip

Discrete TPM 2.0, TCG certified

Fingerprint Reader

No fingerprint reader

Physical Locks

Kensington® Security Slot, 3 x 7 mm

Premier Support - A direct 24x7x365 line to our most elite technicians.



Advanced technical support, 24x7x365, in more than 100 markets



Technical Account Managers for proactive relationship and escalation management



Comprehensive hardware & OEM software support



Priority on service delivery and repair parts



Single point of contact for simplified end-to-end case management



Lenovo Service Connect Portal for customized reporting and product support

Accidental Damage Protection - Protection of your PC from the unexpected.

Experience shows that a significant portion of devices may be damaged (and not covered under warranty) in the first three years. Lenovo's Accidental Damage Protection service covers accidents beyond the system warranty such as drops, spills, bumps and even electrical surges. Make sure your new device has maximum protection, avoid unplanned costs and get peace of mind.

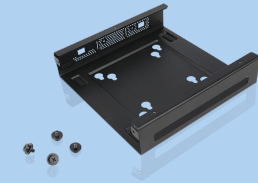
Base Warranty - Included with the systems you purchase, default 1- or 3-year coverage window.

Warranty Extensions & Upgrades - Service and protection that's right for your circumstances.

- Pick Up & Return Courier
- Onsite Support
- Technician Installed Customer
- Replaceable Unit Service
- International Warranty Upgrade

Lenovo may not offer the products, services or features discussed in this document in all regions. Lenovo may withdraw an offering at any time. Information is subject to change without notice. Consult your local representative for information on offerings available in your area. Lenovo reserves the right to change specifications or other product information without notice. Lenovo is not responsible for photographic or typographical errors. Lenovo provides this publication "as is" without warranty of any kind, either express or implied, including the implied warranties of merchantability or fitness for a particular purpose.

Recommended Accessories



ThinkCentre Tiny VESA Mount II

4XFON03161

The ThinkCentre Tiny VESA Mount II is a unique design specific to house the Tiny PC while featuring the universal VESA mount configuration. The VESA standard enables this mount to attach to anything that is VESA comp...

Recommended Services

BEST	5Y Lenovo Protect (Premier Support + ADP + KYD + International Upg) (5PS1D67032)
BETTER	5Y Lenovo Support (Premier Support + KYD + International Upg) (5PS1D67028)
GOOD	4Y Lenovo Support (Premier Support + KYD + International Upg) (5PS1D67027)

For a full list of accessories and services, please visit:
<https://smartfind.Lenovo.com>



PSREF
Product Specifications
Reference