

## PERFORMANCE

### Processor

Intel® Core™ i7-12700T, 12C (8P + 4E) / 20T, P-core 1.4 / 4.6GHz, E-core 1.0 / 3.4GHz, 25MB

### Graphics

Integrated Intel UHD Graphics 770

### Chipset

Intel Q670 chipset

### Memory

1x 16GB SO-DIMM DDR4-3200

### Memory Slots

Two DDR4 SO-DIMM slots, dual-channel capable

### Max Memory

Up to 64GB DDR4-3200

### Storage

1x 1TB SSD M.2 2280 PCIe® 4.0 NVMe® Opal

### Storage Support

Up to two drives, 1x 2.5" HDD + 1x M.2 SSD

- 2.5" HDD up to 1TB
- M.2 SSD up to 2TB

### Optical

None

### Audio Chip

High Definition (HD) Audio, Realtek® ALC256VB codec

### Speakers

2Wx1

### Power Supply

135W 89% Adapter

## DESIGN

### Keyboard

USB Traditional Keyboard, Black, English

### Mouse

USB Calliope Mouse, Black

### Expansion Slots

Two M.2 slots (one for WLAN, one for SSD)

### Case Color

Black

### Stand

Floor Stand

### Adapter Cage

None

### Toolless Chassis Screw

None

### Dust Filter

None

### Mounting

None

### Form Factor

Tiny (1L)

### Dimensions (WxDxH)

| Dimensions | Models  |
|------------|---|
| Tiny only  | 179 x 182.9 x 36.5 mm with rubber feet (7.05 x 7.2 x 1.44 inches with rubber feet)  |
| Tiny & ODD | 204.2 x 186.6 x 64 mm with rubber feet (8.04 x 7.35 x 2.52 inches with rubber feet) |

### Weight

| Models                    | Weight                    |
|---------------------------|---------------------------|
| Tiny only                 | Around 1.25 kg (2.76 lbs) |
| With VESA mount & ODD box | Around 1.74 kg (3.84 lbs) |

## CONNECTIVITY

### Ethernet

Integrated 100/1000M

### WLAN + Bluetooth®

Intel AX201 11ax, 2x2 + BT5.2

### Front Ports

- 1x USB 3.2 Gen 2
- 1x USB 3.2 Gen 2 (Always On and 5V@2.1A charging)
- 1x USB-C® 3.2 Gen 1 (support data transfer and 5V@0.9A charging)
- 1x headphone / microphone combo jack (3.5mm)

### Rear Ports

- 1x USB 2.0
- 1x USB 3.2 Gen 1
- 2x USB 3.2 Gen 2
- 1x HDMI® 2.1 TMDS
- 1x DisplayPort™ 1.4

### Kensington® Cable Lock

None

### Chassis Intrusion Switch

Chassis Intrusion Switch

## MANAGEABILITY

### System Management

Non-vPro

## SERVICE

### Base Warranty

3-year, Onsite

### Included Upgrade

3Y Premier Support Upgrade from 3Y Onsite (5WSOU26647)

## CERTIFICATIONS

### Green Certifications

- EPEAT™ Gold
- ENERGY STAR® 8.0
- ErP Lot 3
- TCO Certified 9.0
- RoHS compliant

### Other Certifications

- TÜV Rheinland® Low Noise
- TÜV Rheinland Ultra Low Noise

### Mil-Spec Test

MIL-STD-810H military test passed (Low Pressure [Altitude], High Temperature, Low Temperature, Temperature Shock, Humidity, Sand and Dust, Vibration, Shock, Fungus, Solar Radiation)

## SOFTWARE

### Operating System

Windows® 11 Pro 64, English

### Bundled Software

None

## MODEL

|                        |                |                       |              |
|------------------------|----------------|-----------------------|--------------|
| <b>TopSeller</b>       | : Yes          | <b>Announce Date</b>  | : 2022-02-22 |
| <b>EAN / UPC / JAN</b> | : 196378797526 | <b>End of Support</b> | : 2028-09-22 |

- 1x Ethernet (RJ-45)

#### **Optional Rear Ports (configured)**

1x HDMI

#### **Monitor Cable**

None

## **SECURITY & PRIVACY**

#### **Security Chip**

Discrete TPM 2.0, TCG certified

#### **Fingerprint Reader**

No fingerprint reader

#### **Physical Locks**

Kensington® Security Slot, 3 x 7 mm

## Premier Support - A direct 24x7x365 line to our most elite technicians.



Advanced technical support, 24x7x365, in more than 100 markets



Technical Account Managers for proactive relationship and escalation management



Comprehensive hardware & OEM software support



Priority on service delivery and repair parts



Single point of contact for simplified end-to-end case management



Lenovo Service Connect Portal for customized reporting and product support

## Accidental Damage Protection - Protection of your PC from the unexpected.

Experience shows that a significant portion of devices may be damaged (and not covered under warranty) in the first three years. Lenovo's Accidental Damage Protection service covers accidents beyond the system warranty such as drops, spills, bumps and even electrical surges. Make sure your new device has maximum protection, avoid unplanned costs and get peace of mind.

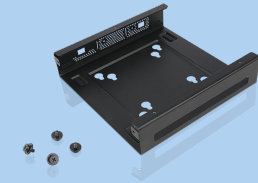
## Base Warranty - Included with the systems you purchase, default 1- or 3-year coverage window.

## Warranty Extensions & Upgrades - Service and protection that's right for your circumstances.

- Pick Up & Return Courier
- Onsite Support
- Technician Installed Customer
- Replaceable Unit Service
- International Warranty Upgrade

Lenovo may not offer the products, services or features discussed in this document in all regions. Lenovo may withdraw an offering at any time. Information is subject to change without notice. Consult your local representative for information on offerings available in your area. Lenovo reserves the right to change specifications or other product information without notice. Lenovo is not responsible for photographic or typographical errors. Lenovo provides this publication "as is" without warranty of any kind, either express or implied, including the implied warranties of merchantability or fitness for a particular purpose.

## Recommended Accessories



### ThinkCentre Tiny VESA Mount II

4XFON03161

The ThinkCentre Tiny VESA Mount II is a unique design specific to house the Tiny PC while featuring the universal VESA mount configuration. The VESA standard enables this mount to attach to anything that is VESA comp...

## Recommended Services

|        |  |
|--------|--|
| BEST   | 5Y Lenovo Protect (Premier Support + ADP + KYD + International Upg) (5PS1D67032) |
| BETTER | 5Y Lenovo Support (Premier Support + KYD + International Upg) (5PS1D67028)       |
| GOOD   | 4Y Lenovo Support (Premier Support + KYD + International Upg) (5PS1D67027)       |

For a full list of accessories and services, please visit:  
<https://smartfind.Lenovo.com>



**PSREF**  
Product Specifications  
Reference