

## PERFORMANCE

### Processor

Intel® Core™ i9-11900T (8C / 16T, 1.5 / 4.9GHz, 16MB)

### Processor Sockets

1x FCLGA1200

### Integrated Graphics

Intel UHD Graphics 750

### Discrete Graphics

NVIDIA® T1000 4GB

### Chipset

Intel Q570 Chipset

### Memory

1x 16GB SO-DIMM DDR4-3200 Non-ECC

### Memory Slots

Two DDR4 SO-DIMM slots, dual-channel capable

### Max Memory

Up to 64GB DDR4-3200

### M.2 SSD Drive

512GB SSD M.2 2280 PCIe® 4.0 NVMe® Opal

### Storage Support

Up to two drives, 2x M.2 SSD  
• M.2 SSD up to 2TB each

### Optical

None

### Audio Chip

High Definition (HD) Audio, Realtek® ALC233VB codec

### Power Supply

230W 89% Power Adapter

## DESIGN

### Keyboard

USB Traditional Keyboard, Black, English

### Mouse

USB Calliope Mouse

### Expansion Slots

One PCIe slot via specific riser card:  
PCIe 3.0 x16 (negotiable link width x8) and low profile for discrete graphics card,  
PCIe 3.0 x4 and low profile for ethernet adapter and Thunderbolt™ adapter

### M.2 Slots

Up to 2x M.2 SSD on models with 11th Core processor:  
• 1x M.2 2280 onboard slot, M.2 PCIe Gen 4  
• 1x M.2 2280 /2242 onboard slot, M.2 PCIe Gen 4

### Bays

No bays

### Dust Filter

None

### Toolless Chassis Screw

Toolless Chassis Screw

### Mounting

1x VESA Mount

### Stand

None

### Dimensions (WxDxH)

37 x 182.9 x 179 mm (1.5 x 7.2 x 7.0 inches)

### Weight

1.4 kg (3 lbs, maximum configuration)

## CONNECTIVITY

### Onboard Ethernet

Intel I219-LM, 1x GbE RJ-45

### Optional Ethernet

None

### WLAN + Bluetooth®

Intel AX201 11ax, 2x2 + BT5.2

### Front Ports

- 1x USB 3.2 Gen 2 (Always On and fast charge)
- 1x USB-C 3.2 Gen 2
- 1x headphone / microphone combo jack (3.5mm)

### Rear Ports

- 2x USB 3.2 Gen 1 (one supports Smart Power On)
- 2x USB 3.2 Gen 2
- 1x HDMI®
- 1x DisplayPort™
- 1x Ethernet (RJ-45)

### Optional Rear Ports (configured)

None

## SECURITY & PRIVACY

### Security Chip

Discrete TPM 2.0, TCG certified

### Physical Locks

Kensington® Security Slot

### Chassis Intrusion Switch

Chassis Intrusion Switch

## MANAGEABILITY

### System Management

Intel vPro with AMT 14, DASH

### Diagnostic

Lenovo® UEFI Bootable Diagnostics

## SERVICE

### Base Warranty

3-year, Onsite

### Included Upgrade

3Y Premier Support Upgrade from 3Y Onsite (5WS0U26646)

## CERTIFICATIONS

### Case Color

Black

### Green Certifications

- EPEAT™ Gold
- ENERGY STAR® 8.0
- RoHS compliant

### ISV Certifications

Please visit [www.thinkworkstations.com/isv-certifications/](http://www.thinkworkstations.com/isv-certifications/)

### Mil-Spec Test

MIL-STD-810G military test passed

## SOFTWARE

### Operating System

Windows® 11 Pro 64, English

### Bundled Software

None

## MODEL

TopSeller : Yes

Announce Date : 2021-12-17

EAN / UPC / JAN : 196119758809

End of Support : 2029-06-25



## Premier Support - A direct 24x7x365 line to our most elite technicians.



Advanced technical support, 24x7x365, in more than 100 markets



Technical Account Managers for proactive relationship and escalation management



Comprehensive hardware & OEM software support



Priority on service delivery and repair parts



Single point of contact for simplified end-to-end case management



Lenovo Service Connect Portal for customized reporting and product support

## Accidental Damage Protection - Protection of your PC from the unexpected.

Experience shows that a significant portion of devices may be damaged (and not covered under warranty) in the first three years. Lenovo's Accidental Damage Protection service covers accidents beyond the system warranty such as drops, spills, bumps and even electrical surges. Make sure your new device has maximum protection, avoid unplanned costs and get peace of mind.

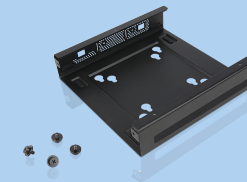
## Base Warranty - Included with the systems you purchase, default 1- or 3-year coverage window.

## Warranty Extensions & Upgrades - Service and protection that's right for your circumstances.

- Pick Up & Return Courier
- Onsite Support
- Technician Installed Customer
- Replaceable Unit Service
- International Warranty Upgrade

Lenovo may not offer the products, services or features discussed in this document in all regions. Lenovo may withdraw an offering at any time. Information is subject to change without notice. Consult your local representative for information on offerings available in your area. Lenovo reserves the right to change specifications or other product information without notice. Lenovo is not responsible for photographic or typographical errors. Lenovo provides this publication "as is" without warranty of any kind, either express or implied, including the implied warranties of merchantability or fitness for a particular purpose.

## Recommended Accessories



### ThinkCentre Tiny VESA Mount II

4XF0N03161

The ThinkCentre Tiny VESA Mount II is a unique design specific to house the Tiny PC while featuring the universal VESA mount configuration. The VESA standard enables this mount to attach to anything that is VESA comp...

## Recommended Services

BEST	5Y Lenovo Protect (Premier Support + ADP + KYD + International Upg) (5PS1D67032)
BETTER	5Y Lenovo Support (Premier Support + KYD + International Upg) (5PS1D67028)
GOOD	4Y Lenovo Support (Premier Support + KYD + International Upg) (5PS1D67027)

For a full list of accessories and services, please visit:  
<https://smartfind.Lenovo.com>



**PSREF**  
Product Specifications  
Reference