

PERFORMANCE

Processor

Intel® Core™ i7-1165G7 (4C / 8T, 2.8 / 4.7GHz, 12MB)

Graphics

Integrated Intel Iris® Xe Graphics

Chipset

Intel SoC Platform

Memory

16GB Soldered DDR4-3200

Memory Slots

Memory soldered to systemboard, no slots, dual-channel

Max Memory

16GB soldered memory, not upgradable

Storage

512GB SSD M.2 2280 PCIe® 3.0x4 NVMe®

Storage Support

One drive, up to 1TB M.2 2280 SSD

Card Reader

MicroSD Card Reader

Optical

None

Audio Chip

High Definition (HD) Audio

Speakers

Stereo speakers, 2W x2, Dolby® Atmos®, Dolby-branded

Camera

IR & 720p + ToF Sensor

Microphone

2x, Array

Battery

Integrated 60.7Wh

Max Battery Life

FHD non-touch model:

MobileMark® 2014: 15 hr

Local video (1080p) playback@150nits: 16 hr

Power Adapter

65W USB-C Slim (3-pin)

DESIGN

Display

14" FHD (1920x1080) IPS 300nits Glossy, 100% sRGB

Touchscreen

None

Keyboard

Backlit, English (US)

Case Color

Slate Grey

Surface Treatment

Anodizing Sandblasting

Case Material

Aluminium (Top), Aluminium (Bottom)

Dimensions (WxDxH)

320.6 x 208.18 x 14.9 mm (12.62 x 8.2 x 0.59 inches)

Weight

1.36 kg (2.99 lbs)

SOFTWARE

Operating System

Windows® 11 Home 64, English

Bundled Software

Office Trial

CONNECTIVITY

Ethernet

None

WLAN + Bluetooth®

11ax, 2x2 + BT5.0

Standard Ports

- 1x USB 3.2 Gen 1
- 1x USB 3.2 Gen 1 (Always On)
- 2x Thunderbolt™ 4 / USB4™ 40Gbps (support data transfer, Power Delivery 3.0 and DisplayPort™ 1.4)
- 1x HDMI® 1.4b
- 1x Card reader
- 1x Headphone / microphone combo jack (3.5mm)

SECURITY & PRIVACY

Security Chip

Firmware TPM 2.0

Fingerprint Reader

Touch Style

Other Security

IR camera for Windows Hello

SERVICE

Base Warranty

1-year, Depot

Included Upgrade

1Y Premium Care with Onsite upgrade from 1Y Courier/Carry-in (5WSOT73712)

ACCESSORIES

Bundled Accessories

None

CERTIFICATIONS

Green Certifications

- ENERGY STAR® 8.0
- ErP Lot 3
- RoHS compliant

Other Certifications

Intel® Evo™ Platform

MODEL

TopSeller	: No	Announce Date	: 2021-10-05
EAN / UPC / JAN	: 196119113981	End of Support	: 2026-12-09



Premium Care - Advanced Support from Real People. Real Fast.



REAL PERSON

Choose how you want to reach us - through the phone, chat or email - our expert technicians will take care of you.



REAL FAST

Highly trained technicians will provide you real-time solutions, whatever the issue, on your first contact. If needed, our team will schedule an onsite visit for the next business day.



HASSLE FREE

'Getting started' and 'how-to' assistance for hardware and software. Easy solutions that are simple to reach - that's how Premium Care delivers you the ideal support experience.



PC HEALTH CHECK

Free annual PC Health Check that allows our experts to spot issues before you do so they can resolve them quickly and help you avoid PC problems.

Accidental Damage Protection - Protection of your PC from the unexpected.

Experience shows that a significant portion of devices may be damaged (and not covered under warranty) in the first three years. Lenovo's Accidental Damage Protection service covers accidents beyond the system warranty such as drops, spills, bumps and even electrical surges. Make sure your new device has maximum protection, avoid unplanned costs and get peace of mind.

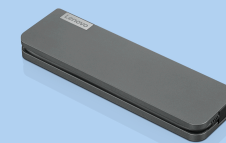
Base Warranty – Included with the systems you purchase, default 1- or 3-year coverage window.

Warranty Extensions & Upgrades – Service and protection that's right for your circumstances.

- Pick Up & Return Courier
- Onsite Support
- Technician Installed Customer
- Replaceable Unit Service
- International Warranty Upgrade

Lenovo may not offer the products, services or features discussed in this document in all regions. Lenovo may withdraw an offering at any time. Consult your local representative for information on offerings available in your area. Lenovo reserves the right to change specifications or other product information without notice. Lenovo is not responsible for photographic or typographical errors. Lenovo provides this publication "as is" without warranty of any kind, either express or implied, including the implied warranties of merchantability or fitness for a particular purpose.

Recommended Accessories



Lenovo USB-C Mini Dock_US

40AU0065US

Expand Your Potential with An Universal Mini Dock; Lenovo understands that modern business depends on a wide variety of PC's and even brands to meet their business needs. To make this easier Lenovo USB-C Mini dock is ...

Lenovo Thunderbolt 3 Essential Dock

40AV0135US

Lenovo understands that modern business depends on a wide variety of notebooks and devices from different brands working seamlessly together to meet business needs. To deliver this experience, Lenovo Thunderbolt 3 Ess...

For a full list of accessories and services, please visit:
<https://smartfind.Lenovo.com>

Lenovo

PSREF
Product Specifications
Reference