



PAD-ICCTKG

Quick Release Secure Table Kiosk with Inductive Charging Case (Green)



Features:

- Sturdy metal stand with wall plug
- Wireless charging function
- Durable impact shielding
- Rugged rubber construction
- Water resistant
- Includes VESA 75 x 75 and 100 x 100-millimeter mounting plates
- Embedded magnet allows for quick mounting to the inductive charging back plate
- Allows full access to charge port, speakers, camera, and home button
- Compatible with iPad 7th and 8th Generation 10.2-inch, iPad Pro 10.5-inch, iPad Air 3

Specifications:

- Dimensions: 2.1 x 7.3 x 11.2-inches
- Weight: 1.1 lbs.

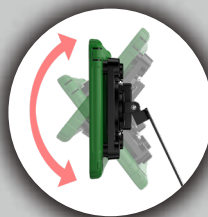
Package includes:

- (1) Rugged rubber case with magnetic housing plate
- (1) VESA plate
- (1) Inductive charging back plate
- (1) Sturdy stand
- (1) Wall plug

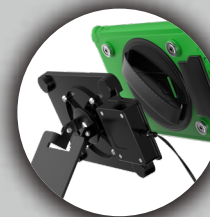


CTA Digital's game changing Quick Release Secure Table Kiosk with Inductive Charging Case is the perfect solution for anyone who needs a rugged solution for tablet holder – complete with wireless charging capabilities.

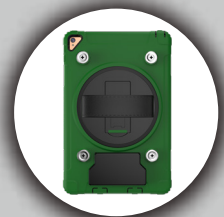
The stand is made of sturdy metal, and allows intuitive cable routing through the center. Plug it into a wall outlet. The inductive charging case prevents the need to remove the iPad to plug in a charging cable. Instead, simply line up the case onto the inductive pad on the kiosk. Electromagnetic fields between the tablet and the docking station create a wireless current that charges the battery. When you're ready to switch from the kiosk to handheld use, simply remove the durable rubber splash-proof and drop-tested case. Slip your hand through the cushioned strap, and you're ready to go. Compatible with iPad 8th Generation 10.2-inch, iPad Air 4, iPad Pro 10.5-inch, and more.



Versatile Tilt
Adjustable



Fast-Charging
Inductive Base Plate



Quick Magnetic
Mounting

	Quantity	Width	Height	Depth	Weight	UPC Barcode
Packaging	-	-	-	-	-	656777021191
Master	-	-	-	-	-	10656777021198