



Rotary & Tilting VESA-Compatible Wall Mount

ADD-VESARBH

Rotary & Tilting VESA-Compatible Wall Mount

This versatile wall mount is perfect tablet for use in office lobbies, hotel check-in stations, conference rooms, classrooms, and anywhere you need a secure place to mount a tablet or monitor. The sturdy base is easily hung on walls via the included hardware kit. The 75 x 75-millimeter and 100 x 100-millimeter VESA mount works seamlessly with CTA's popular Paragon Enclosures, monitors, or other compatible device cases. The stand itself features a tilting top that allows for virtually any viewing angle. The top of the stand rotates for viewing in either portrait or landscape mode. All cables and charging cords may be neatly routed through the center body.



Features:

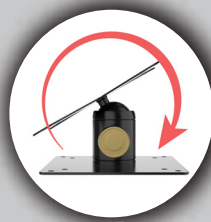
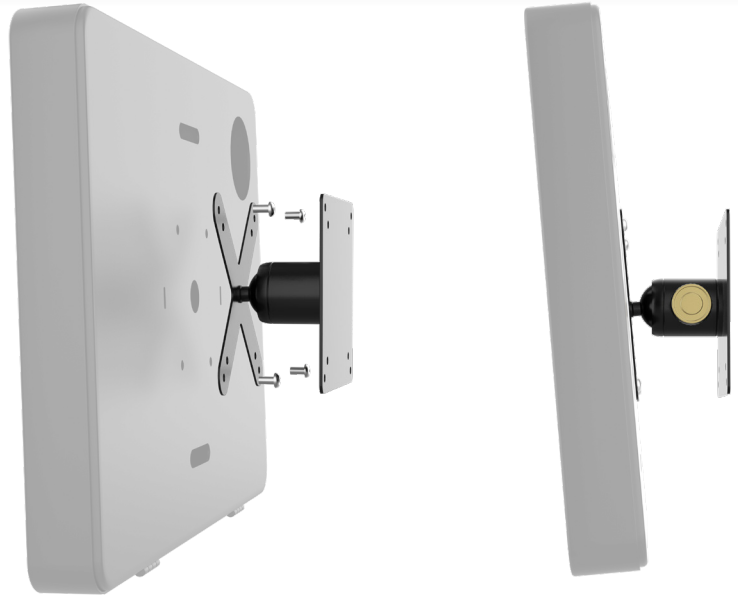
- Heavy-duty Steel base
- Scratch protected padding on weighted base protects wall surfaces
- Perfect for reception desks, waiting rooms, conference rooms, check-in stations, classrooms, and more.
- 75 x 75-millimeter or 100 x 100-millimeter VESA mount
- Compatible with CTA Digital's Paragon Enclosures and other VESA-compatible device holders or monitors

Specifications:

- Overall Dimensions: 4.7" x 4.7" x 4.2"
- Weight: 2.9 lbs

Package contents:

- (1) Wall Mount Tablet Kiosk
- (1) VESA mount
- (1) Set of hardware



Flexible Tilt Adjustable Angles



Versatile VESA Mount



Portrait and Landscape Orientations

	Quantity	Width	Height	Depth	Weight	UPC Barcode
Packaging	-	-	-	-	-	656777020095
Master	-	-	-	-	-	10656777020092