



Locking Tablet Mount and USB Hub with Full Cable Management with Paragon Enclosure



PAD-LTMUH2E



Locking Tablet Mount & USB Hub

This sturdy arm mount combines a generous set of adjustments, joints, and pivot points with a convenient clamp that transforms any counter, desk, or table into a versatile digital workspace. The arm installs easily using an adjustable scratch-protected C-clamp. The VESA plate at the top is ready to attach to any of CTA's VESA-mount tablet enclosures or other compatible cases. The mount features a full 90-degree rotation for use in either landscape or portrait orientation. The spring-loaded elbow joint adjusts 180-degrees. To create the perfect work angle, simply loosen the mid joint with the included Allen wrench, position, and tighten. The base joint rotates 135-degrees to facilitate just the right viewing angle. At the base of the mount, you'll find a handy USB extension port for easy charging while in use. Just plug the attached USB cables into a computer or other power source, then plug your tablet directly into the base of the stand. Interior cable routing system within the arms gives ample space to keep cords out of site.

Features:

- 75 x 75-millimeter and 100 x 100-millimeter VESA plate easily connects to any VESA-compatible mount
- VESA plate rotates 90-degrees for use in both landscape and portrait orientations
- Elbow joint tilts a full 180-degrees and locks in place with Allen wrench (included)
- Base rotates 135-degrees
- C-clamp adjusts to any table or surface from 0.39- to 3.14-inches total thickness
- Interior cable routing system allows neat storage of cables while in use
- Fits most 17-32-inch devices or monitors
- Supports up to 19.8 pounds
- USB 3.0 ports create convenient charging
- Compatible with iPad 10.2-inch (7th & 8th Generation), 11-inch iPad Pro (2018/2020), iPad Air 3 (2019), iPad Gen. 5 (2017), iPad Gen. 6 (2018), iPad Pro 9.7, iPad Pro 10.5, iPad Air Gen. 1-2, Galaxy Tab A 9.7", Galaxy Tab S2 9.7", Galaxy Tab S3 9.7", Galaxy Tab 3 10.1", and Galaxy Tab 4 10.1", Galaxy Tab A 10.1" (2019), Lenovo Tab 4, Surface Go, Galaxy Tab S5E, Zebra Tablets, and More.

Specifications:

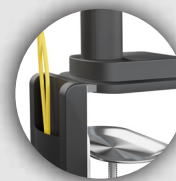
- Full Extension Dimensions: 6.7 – 20-inches
- Upper Arm Adjustment Dimensions: 10-12-inches
- Lower Arm Dimensions: 6.8-inches
- Enclosure Dimensions: 12.1" x 9.44" x 0.95"

Package Includes:

- (1) Articulated Arm with C-clamp mounting system
- (1) Tablet enclosure
- (2) Keys
- (1) Set tablet adapters
- (1) Set assembly hardware



VESA Capable
75mm x 75mm
100mm x 100mm



Efficient
Cable Management
System



Sturdy
C-Clamp Mount



Height Adjustable

	Quantity	Width	Height	Depth	Weight	UPC Barcode
Packaging	-	-	-	-	-	656777020002
Master	-	-	-	-	-	10656777020009