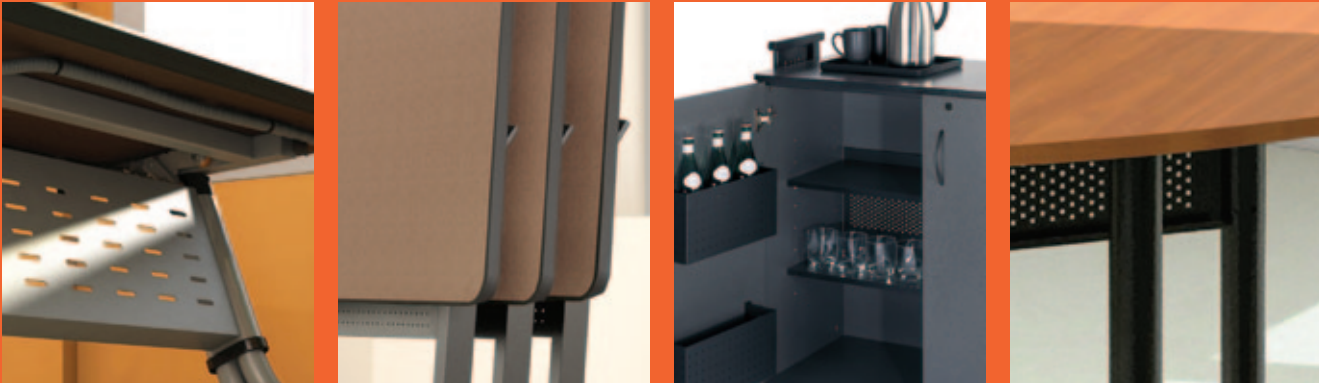




Meeting & Training
Solutions





Mayline has been making collaborative furniture for more than 75 years. The way people work together has changed a bit over that time, but we're still offering simple, smart, solid solutions that don't require an engineering degree to figure out or a Fortune 500 budget to afford. If you want meeting and training room furniture you can put to immediate use ... if you want it fast ... and you want it to last ... you want Mayline.

TABLE OF CONTENTS:

Sync™ Pages 4-5	Flip-N-Go® Pages 6-7	Meeting Plus™ Pages 8-9	T-Mate Pages 10-11	Encounter Pages 12-13	Room Accessories Page 14	Valoré® Seating Page 15
--------------------	-------------------------	-------------------------------	-----------------------	--------------------------	--------------------------------	-------------------------------

75 YEARS OF SOCIAL ENGINEERING.



Sync Tables in Mocha/Black. Shown with Aberdeen Low Wall Cabinet and Valoré TSH1 Chairs (see page 15).



Linking style and function.

The shapely leg may turn heads, but it's the convenience that will make you fall in love. Thoughtful engineering features include a single-handed control mechanism that enables one person to easily flip the top. The control's center placement allows a wide variety of custom top shapes. The table assembles in minutes, gangs in a snap, and moves with graceful ease into any training room configuration.

SYNC FEATURES:

- 29½" overall table height; four locking casters.
- Standard rectangle, crescent, trapezoid, transition and pie tops.
- Silver frame.
- Ganging kit included.
- Choose from over 900 standard laminates from Nevamar®, Wilsonart®, Pionite® and Formica® at no additional upcharge.



Sync Tables in Mocha/Black. Shown with Aberdeen Visual Presentation Board, Low Wall Cabinet and Lectern, and Valore TSH1F Chairs (see page 15).



Tables straight-line nest for compact storage.



One control, one person, one hand – that's all it takes to flip the table top.



An integrated modesty panel with built-in cable trough manages flexible power options (see page 14).



Flip-N-Go Tables in Folkstone/Black. Shown with Presentation Stand (see page 14) and Valoré TSM2 Chairs (page 15).

Small effort, big reward.

It doesn't take much to put Flip-N-Go to work for you. Just roll the tables where you want them and lock the casters. You can gang them if you like, and add transition tables and pie connectors to create more elaborate configurations. When it comes time to store them, just flip a lever – there's one on either side of the table – and the top will tilt and lock to allow straight-line nesting.



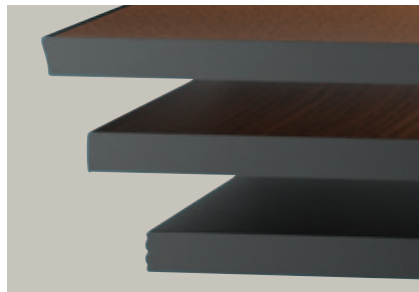
Flip-N-Go Tables in Folkstone/Black with Black/Black Transition Table and Valoré TSM2 Chairs (page 15).



Leg design allows tables to nest neatly together in a straight row.



Dual-sided levers allow easy flip action. Integrated cable trough in modesty panel manages flexible power options (see page 14).



Choice of Knife-edge T-Mold, Standard T-Mold and Fluted T-Mold.

FLIP-N-GO FEATURES:

- 29½" overall table height; four locking casters.
- Rectangle, crescent, trapezoid, transition and pie top options.
- Ganging accessory kit included.
- Black table frames only.
- Choose from over 900 standard laminates from Nevamar®, Wilsonart®, Pionite® and Formica® at no additional upcharge.

MEETING PLUS™



Meeting Plus Tables in Cherry/Black with Black/Black Pie Connectors and Transition Tables. Shown with Aberdeen Low Wall Cabinet and Lectern, and Valoré TSH1 Chairs (see page 15).

Premium tables. Not-so-premium prices.

Our top-of-the-line solution, Meeting Plus offers a substantial look and feel along with exceptional durability and a host of convenient features. But is it mobile, you ask? Sure is – just pick up one end of the table and move it like a wheelbarrow. Best of all, you don't need a wheelbarrow full of money to pay for it.



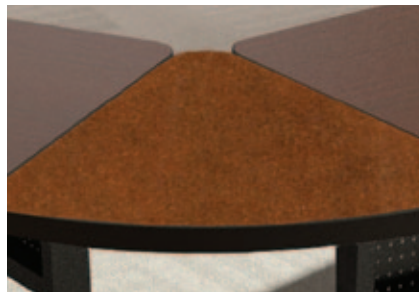
Meeting Plus Tables in Mocha/Taupe with Burnished Chestnut/Taupe Pie Connectors and Transition Tables. Shown with Aberdeen Bookcase, Visual Presentation Board and Low Wall Cabinet, and Valore TSH1 Chairs (see page 15).



Modesty panel offers an extra-deep cable trough and supports table-to-table pass-thru for cord management.



Integrated wheels in one foot allow for wheelbarrow-style mobility.



Pie connectors in three sizes maximize configuration flexibility.

MEETING PLUS FEATURES:

- 29½" overall table height; one mobile and one stationary leg.
- Rectangle, crescent, trapezoid, transition and pie top options allow for endless room configurations.
- Optional ganging accessory securely connects tables.
- Bases available in all Mayline standard paint colors.
- Choose from over 900 standard laminates from Nevamar®, Wilsonart®, Pionite® and Formica® at no additional upcharge.

T - M A T E



T-Mate Tables in Cherry/Black with Black/Black Transition Tables. Shown with Lectern (see page 14) and Valoré TSM2 Chairs (page 15).

A leg up on affordability.

It's simple math: fewer legs equals lower price. That's the equation behind T-Mate, which shares legs between adjacent surfaces to deliver excellent value. Shared legs also allow more kneespace and a cleaner look. Don't worry that you'll have to sacrifice flexibility – you can still create a huge range of room configurations with T-Mate's three versatile top shapes.



T-Mate Tables in Rhinestone Cowboy/Taupe and Pie Connectors in Valley of the Sun/Taupe. Shown with Valoré TSM2 Chairs (page 15).



One-legged Adder tables can be joined to two-legged Starter tables in either direction.



Optional steel modesty panels feature a generous trough for table-to-table cabling.

T-MATE FEATURES:

- 29" overall table height; stationary legs.
- Rectangle, transition and pie top options.
- Optional ganging accessory securely connects tables.
- Threaded metal-to-metal connectors attach 2" tubular steel legs to surfaces.
- Bases available in all Mayline standard paint colors.
- Choose from over 900 standard laminates from Nevamar®, Wilsonart®, Pionite® and Formica® at no additional upcharge.

ENCOUNTER



Encounter Tables in Cherry/Black. Shown with Hospitality Cart and Lectern (see page 14) and Valoré TSM2 Chairs (page 15).

Where low price and high performance meet.

Sometimes “simple” and “affordable” are your overriding concerns. That’s when you want Encounter. It’s a basic line of multi-functional tables that delivers a fair degree of flexibility and a whole lot of durability. The clean, refined appearance will complement most any interior.



Encounter Tables in Folkstone/Black. Shown with Presentation Stand (see page 14) and Valoré TSM2 Chairs (page 15).



Half-round tables bridge rectangular tables to maximize space.



Crescent tables extend your room planning flexibility.



Tables come standard with modesty panels.

ENCOUNTER FEATURES:

- 29" overall table height; stationary legs with beveled leveling glides.
- Rectangle, crescent and half-round top options.
- Threaded metal inserts connect steel frame to laminate surfaces.
- Scratch-resistant surfaces are protected with a durable PVC edge.
- Black bases with Cherry or Folkstone laminates.
- Delivered in 1-4 days through Mayline's **FAST** Freight program.

ACCESSORIES

Host with the most.

Give your presenters all the tools they need to host a successful session.



1050LT Lectern



1010PC Presentation Stand



1015HC Hospitality Cart

- Sturdy, perforated black steel side supports.
- Heavy-duty, locking casters.
- Speckled Anthracite laminate surfaces.
- Standard integrated power module on Audio/Visual Cart.

Power up.

Bring power and data directly to the table with these flexible options available for any of our training tables.

POWER INFEEED OPTIONS:



ECB Quick Disconnect - Plug & Power



ECH Traditional Hardwire



ECS Single Circuit - 15 Amp Plug



Surface Mount Module



Undersurface Mount Module

- Power infeeds link up to 10 (ECS) or 20 tables (ECH, ECB).
- Power receptacles can be located on or below table surface.
- Non-sequential connections make reconfiguration easy.
- Quick Kits, specific to your tabletop size, include all you need to power tables.
- Optional data ports available.

SURFACE MOUNT OPTIONS:



PM20 Power Module



PM22 Power and Data Module with 2 Power/2 Data Outlets



PM 44 Double-Sided Power and Data Module



350190 Power/Data Module



F740 Surface Grommet



PMR30 Power Module with 3 Outlets



PMR22 Power and Data Module with 2 Power/2 Data Outlets

VALORÉ® SEATING

Meshes well with all our tables.

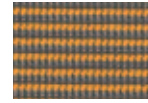
Comfortable, breathable, mobile and affordable, Valoré offers a stylish mesh back and fabric seat cushion that flips up for compact nesting storage.



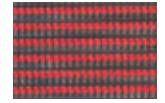
Black Fabric



Black Mesh



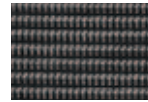
Orange Mesh



Red Mesh

TSH1 HIGH-BACK CHAIR

- Black fabric seat.
- Integrated arms.
- Comfortable recline action.
- Chrome frame.
- Optional chair glides.



Black Mesh



Upholstered
Seat
Fabric

150-plus Momentum® fabric options

TSH1F CHAIR

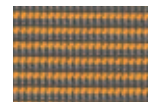
- Black mesh back (only).
- Upholstered seat.
- Integrated arms.
- Comfortable recline action.
- Black or Chrome frame.
- Optional chair glides.



Black Fabric



Black Mesh



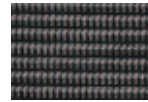
Orange Mesh



Red Mesh

TSH2 CHAIR

- Black fabric seat.
- Comfortable recline action.
- Chrome frame.
- Optional chair glides.



Black Mesh



Upholstered
Seat
Fabric

150-plus Momentum® fabric options

TSH2F CHAIR

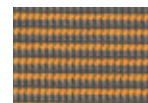
- Black mesh back (only).
- Upholstered seat.
- Comfortable recline action.
- Black or Chrome frame.
- Optional chair glides.



Black Fabric



Black Mesh



Orange Mesh



Burgundy Mesh

TSM2 ARM CHAIR

- Black fabric seat.
- Integrated arms.
- Brushed Silver frame.
- Optional chair glides.



MAYLINE®

www.mayline.com

CORPORATE LOCATION

MAYLINE
619 N. COMMERCE STREET
PO BOX 728
SHEBOYGAN, WI 53082-0728
CUSTOMER SERVICE 800-822-8037
920-457-7388 (FAX)
EMAIL: CUSTOMERSERVICE@MAYLINE.COM

TO PLACE ORDERS:
MAYLINE
ATTN: ORDER DESK
PO BOX 728
SHEBOYGAN, WI 53082-0728
800-822-8037
920-457-7388 (FAX)
EMAIL: ORDERDESK@MAYLINE.COM

DISTRIBUTION CENTER

ARKANSAS
824 NORTH PALM STREET
NORTH LITTLE ROCK, AR
800-480-3123

SHOWROOM LOCATIONS

ATLANTA
2030 POWERS FERRY RD., SUITE 230
ATLANTA, GA
770-984-9047

BOSTON
850 SUMMER STREET
BOSTON, MA
617-269-7600

CHICAGO
MERCHANDISE MART, SUITE 1147
CHICAGO, IL
847-952-1213

CINCINNATI
2226 GILBERT AVENUE
CINCINNATI, OH
513-221-4800

DALLAS
4885 ALPHA RD., SUITE 155
FARMERS BRANCH, TX
303-738-1001

DENVER
WELLS FARGO BUILDING
3333 S. BANNOCK ST., SUITE 310
ENGLEWOOD, CO
303-738-1001

DETROIT
2384 FRANKLIN ROAD
BLOOMFIELD HILLS, MI
248-745-9990

HOUSTON
1213 WEST LOOP NORTH #160
HOUSTON, TX
281-829-1432

LOS ANGELES
12015 MORA DR., UNIT 1
SANTE FE SPRINGS, CA
562-903-7090

NEW YORK
200 LEXINGTON AVE., SUITE 1307
NEW YORK, NY
212-684-7788

NORTHERN CALIFORNIA
2528 QUIME DR., SUITE 6
SAN JOSE, CA
925-786-0178

PORTLAND
1001 SE WATER AVE., SUITE 400
PORTLAND, OR
503-222-2364

ST. LOUIS
3204 MORGAN FORD ROAD
ST. LOUIS, MO
314-771-6696

SEATTLE
829 S. FIDALGO
SEATTLE, WA
206-767-0412

TORONTO
210 PONY DRIVE, UNIT 2
NEWMARKET, ONT
CANADA
905-830-0247

VANCOUVER
110-4611 #6 ROAD
RICHMOND, BC
CANADA
604-272-4401

WASHINGTON D.C.
1738 ELTON RD., SUITE 304
SILVER SPRING, MD
301-408-0600