

# Cosmopolitan Series

The Cosmopolitan® Series are ceiling or wall mounted electric screens.



## Features

- Single-piece steel case - with integrated mounting holes in the end caps on sizes up to 12' wide
- Two-piece aluminum case - with adjustable mounting brackets for wall or ceiling mount installation on sizes over 12' wide
- Decora-style, three-position wall switch
- Available with built-in low voltage control, Video Projector Interface (screen trigger) or silent motor
- Standard white powder-coated housing finish; available in black upon request
- Standard black backing retains projected brightness on front projection surfaces
- Seamless surfaces in all models

## Optional Accessories

- Floating Mounting Bracket for Cosmopolitan and Tensioned Cosmopolitan (for 12' W and under)
- Ceiling Trim Kit for Cosmopolitan (for 12' W and under)
- Single Motor Low Voltage Control System
- Radio Frequency Wireless Remote - Single Motor LVC
- Infrared Wireless Remote - Single Motor LVC
- SCB-100
- Video Projector Interface
- Key Operated, 110 Volt Switch
- Locking Switch Cover Plate
- Dual Motor Low Voltage Control System
- Radio Frequency Wireless Remote - Dual Motor LVC
- Infrared Wireless Remote - Dual Motor LVC
- Replacement Wall Switch
- Smart Low Voltage Wall Switch

## 16:9 HDTV Format

Viewing Area (H x W)		Nominal Diagonal	
in.	cm	in.	cm
45" x 80"	114 x 203	92"	234
52" x 92"	132 x 234	106"	269
54" x 96"	137 x 244	110"	279
58" x 104"	147 x 264	119"	302
65" x 116"	165 x 295	133"	338
78" x 139"	198 x 353	159"	404
92" x 164"	234 x 417	188"	478
106" x 188"	269 x 478	216"	549

## 16:10 Wide Format

Viewing Area (H x W)		Nominal Diagonal	
in.	cm	in.	cm
50" x 80"	127 x 203	94"	239
57½" x 92"	146 x 234	109"	277
60" x 96"	152 x 244	113"	287
65" x 104"	165 x 264	123"	312
69" x 110"	175 x 279	130"	330
72½" x 116"	184 x 295	137"	348
87" x 139"	221 x 353	164"	417
100" x 160"	254 x 406	189"	480
110" x 176"	279 x 447	208"	528
117½" x 188"	283 x 478	222"	564

## 4:3 Video Format

Viewing Area (H x W)		Nominal Diagonal	
in.	cm	in.	cm
43" x 57"	109 x 145	72"	183
50" x 67"	127 x 170	84"	213
60" x 80"	152 x 203	100"	254
69" x 92"	175 x 234	120"	305
87" x 116"	221 x 295	150"	381
105" x 140"	267 x 356	180"	457
120" x 160"	305 x 406	200"	508
123" x 164"	312 x 417	210"	533
141" x 188"	358 x 478	240"	610

## Available with the Following Screen Surfaces



**Matte White**

Half Angle: 60° Gain: 1.0



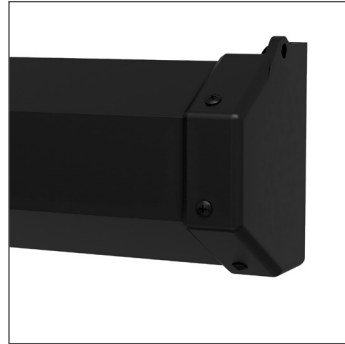
**High Contrast Matte White**

Half Angle: 50° Gain: 1.1

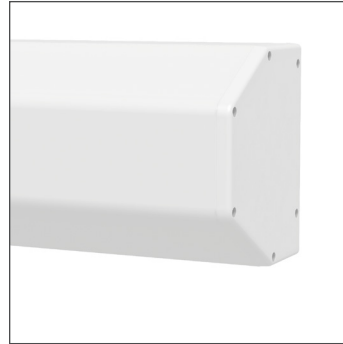
## Product Images



White Case (Standard)



Black Case



White Case (Standard) - Over 12" W



Black Case - Over 12" W



FOR YOUR IMAGE | [legrandav.com](http://legrandav.com)

**USA** P 866.977.3901 E [av.da-lite.support@legrand.com](mailto:av.da-lite.support@legrand.com)  
**CANADA** P 877.345.4329 E [av.da-lite.support@legrand.com](mailto:av.da-lite.support@legrand.com)  
**EMEA** P +31 495 580 840 E [av.emea.sales@legrand.com](mailto:av.emea.sales@legrand.com)  
**APAC** P +852 2145 4099 E [av.asia.sales@legrand.com](mailto:av.asia.sales@legrand.com)

©2020 Legrand AV Inc. 200031 2/20 Da-Lite is a registered trademark of Legrand AV Inc. All other brand names or marks are used for identification purposes and are trademarks of their respective owners. All patents are protected under existing designations. Other patents pending.



**COMMERCIAL BRANDS**

C2G | Chief | Da-Lite | Luxul | Middle Atlantic | Projecta | Vaddio