

# DS-700AC

## Wireless USB Device Server with USB3.0 and Enterprise Security

### Securely share USB devices over the wireless network in your facilities



#### Overview

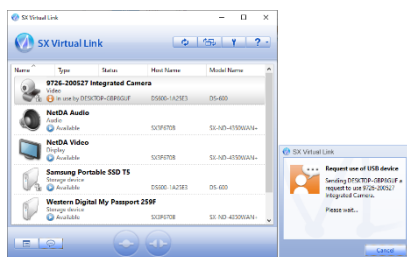
USB devices such as scanners, MFP (Multi-Functional Printer), hard disks, and cameras are used at offices. DS-700AC allows users to free from constrain of cables and place devices more freely by converting USB cables to a wireless network. More than one users share a single USB device easily by using DS-700AC, so that they can optimize the number of USB devices at offices and expect to reduce installation costs.

#### USB Device Server

With silex technology's USB virtual technology (USB Virtual Link Technology<sup>®</sup>), USB devices connected to a network can be used as if they are connected to a PC with a USB cable. The driver and the application software of the USB devices can be used without modification.

#### SX Virtual Link

SX Virtual Link is application software designed for USB Virtual Link Technology<sup>®</sup>. SX Virtual Link allows users to manage USB devices connected to DS-700AC.

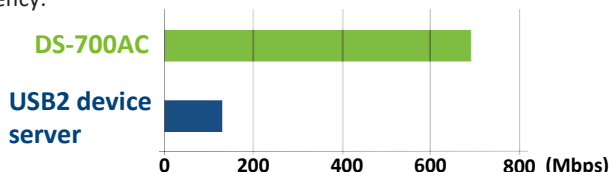


- Users can remotely connect/disconnect a USB device.
- Users can send a message requesting to disconnect when another user is already using the USB device.

#### Features

##### 1 High Data Bandwidth

DS-700AC supports USB3.0 SuperSpeed to transmit data faster than the previous model. In combination with USB3.0, DS-700AC can transmit even a large amount of data of devices such as document scanners to a network for a short time, so that it can be expected to improve business efficiency.



\* Comparison of data transfer rate of the device servers over wired LAN (silex's comparison).

##### 2 Various USB Devices Support

###### • Isochronous Transfer Mode

USB devices such as web cameras and USB speakers requiring continuous and real-time data transfer can also be used in a network environment.

\* Some USB devices have complex transfer modes, so it is recommended to verify the performance before large deployment.

###### • Standard TCP/IP Printing (LPR/RAW)

When a printer is connected to DS-700AC, users can use DS-700AC as a print server. The print server function is based on the commonly used network printing protocol. DS-700AC supports "Raw Mode Print" and "LPR Print."

##### 3 Wi-Fi Security for Enterprise

The DS-700AC supports the enterprise Wi-Fi security, not only WAP2-Enterprise, but also WAP3-Enterprise.

##### 4 Easy Configuration and Installation

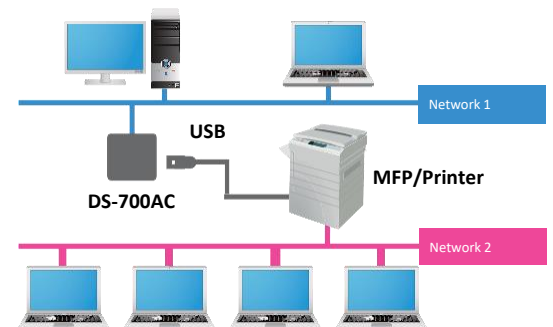
"Device Server Setup" utility makes the DS-700AC setup easy. The DS-700AC configuration after the installation is also made easy by an integrated web configuration page or AMC Manager<sup>®</sup>.

##### 5 ECO Mode

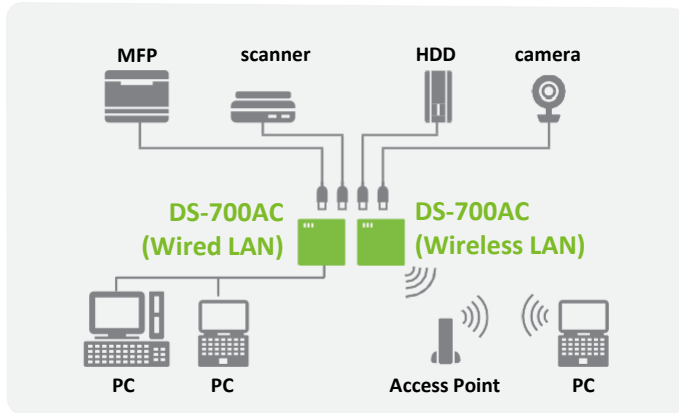
When the DS-700AC is not used for a certain period of time, the DS-700AC shuts off the USB bus power to save the power. Once the DS-700AC detects an activity from the network, the USB bus power is automatically powered on.

#### Sharing of OA Equipment Between Two Networks

OA (Office Automation) devices including MFP and a printer are often accessible from only one network because they have only one Ethernet LAN interface. The DS-700AC adds one more network connectivity to OA devices utilizing the USB port to access from another network.

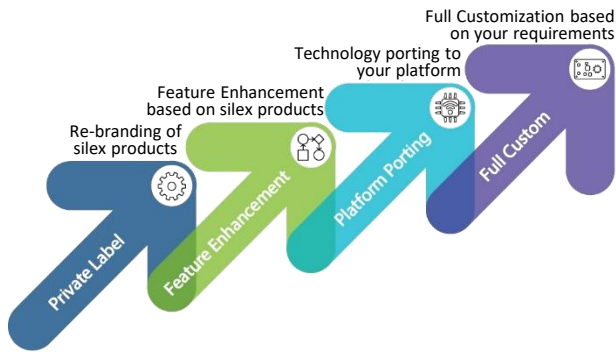


## Use case examples



## Customization for OEM customers

At Sillex, we offer our customers the opportunity to customize products. As an OEM, this gives you the ability to specify what the product looks like and you choose what goes into the product.



## sESS (sillex Embedded Software Suite)

sillex has Software Development Kit (SDK) for client devices to add USB device server functions, SX Virtual Link, to customers' applications. With the SDK, the customers can use DS-700AC functions on Windows applications, smartphones and tablets run on iOS and Android.

SX UVL Client SDK for Win32

SX UVL Client SDK for iOS

SX UVL Client SDK for Android

\* Please contact our sales representatives for more details.

## DS-700AC Specifications

Product Name	DS-700AC
Wired LAN Interface	RJ-45: x1 10BASE-T/100BASE-TX/1000BASE-T (Auto)
Wireless LAN Interface	Dual band IEEE 802.11a/b/g/n/ac wave2 2T x 2R, MU-MIMO
Device Interface	USB: x2 (USB3 SuperSpeed Type-Ax1*, USB2 Hi-Speed Type-A x1)
Switch	Push Switch x 1
LED	RJ-45: x2
Operating Environment	Temperature: 0 to +40°C Humidity: 20 ~ 80% RH
Storage Condition	Temperature: -10 to 50°C Humidity: 20 ~ 90% RH
Power Supply	DC 12V DC Jack (EIAJ4)
Max Power Consumption	5.4W (12VDC, 0.45A) * USB bus power excluded
Dimension	110mm X 109mm X 27mm (the main body size excluding protrusions)
Weight	135g (the main body only)
Included Items	DS-700AC, AC adapter, setup guide, GPL inquiry sheet
Regulatory Compliance	FCC Class B, ICES Class B, CE Class B, VCCI Class B, RoHS
Warranty	5 years
Security	<u>Wi-Fi authentication:</u> Open, WPA3-Personal, WPA2-Personal, WPA/WPA2-Personal, WPA3-Enterprise, WPA2-Enterprise, WPA/WPA2-Enterprise <u>Wi-Fi encryption:</u> WEP, AES, Auto USB connection password protection IP address filter Port filter
Supported Software	SX Virtual Link Device, Device Server Setup AMC Manager®
Supported OS	Windows 10 (32/64-bit), Windows 8/8.1 (32/64-bit), Windows 7 (32/64-bit), Windows Server 2019, Windows Server 2016, Windows Server 2012R2, Windows Server 2012, Windows Server 2008R2

\* The bus power supply current is 900mA for the USB3.0 port and 500mA for the USB2.0 port. USB hubs and devices with a built-in USB hub inside cannot be used for the USB3.0 port. USB image conversion devices cannot be used for the USB3.0 port.

## Non-wireless version of DS-700AC

### DS-700 Device Server with USB3.0 support

- 10BASE-T, 100BASE-TX, 1000BASE-T (Auto negotiation)
- USB3.0 (Type-A) x 1 port, USB 2.0 (Type-A) x 1 port
- Isochronous transfer



Sillex technology is a registered trademark of sillex technology, Inc. other product or brand names may be registered trademarks or trademarks of their respective owners. Technical information and specifications are subject to change without notice. © 2021 sillex technology, Inc. All rights reserved.



## sillex global sales & support locations



**US Office**  
sillex technology america, Inc.  
US toll free 657-218-5199  
[www.sillextechnology.com](http://www.sillextechnology.com)  
[sales@sillexamerica.com](mailto:sales@sillexamerica.com)

**Europe Office**  
sillex technology europe, GmbH  
+49-2154-88967-0  
Germany toll free 0800-7453938  
[www.sillextechnology.com](http://www.sillextechnology.com)  
[sales@sillexeurope.com](mailto:sales@sillexeurope.com)

**India Office**  
sillex technology india, Pvt. Ltd.  
+91-44-43033234  
[www.sillex-india.com](http://www.sillex-india.com)  
[support@sillex-india.com](mailto:support@sillex-india.com)

**Corporate Headquarters**  
sillex technology, Inc.  
+81-774-98-3781  
[www.sillex.jp](http://www.sillex.jp)  
[support@sillex.jp](mailto:support@sillex.jp)