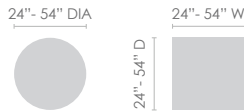


PRODUCT SPECIFICATIONS

Cast Iron 2.0 tables are manufactured of high-quality cast iron and finished with a black or fog gray powder coat. Feel inspired to transform any breakroom or cafeteria into a masterpiece of welcoming design by selecting from dozens for top finishes, edge treatments, and several top shapes.

CANTINA-2



BASE CONSTRUCTION

- Height: 29" or 42"
- Bolted/welded
- Column: 11 gauge steel
- Column diameter: 3" and 4"
- Welded mounting plate is 11" x 11 x 5/32"

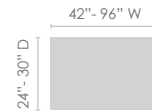
STAR X-2



BASE CONSTRUCTION

- Height: 29" or 42"
- Bolted/welded
- Column: 11 gauge steel
- Column diameter: 3"
- Welded mounting plate is 11" x 11 x 5/32"

PORTOFINO-2



LEG CONSTRUCTION

- Height: 29" or 42"
- Bolted/welded
- Column: 11 gauge steel
- Column diameter: 3"
- 22" base spread
- Welded mounting plate is 11" x 11 x 5/32"

ACCESSORIES

- Privacy screens
- Modesty panels
- Grommets

SERIES OPTIONS

FINISH OPTIONS



Fog Gray

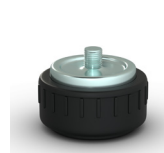


Black Wrinkle



Foot Ring

16" diameter, 12" high foot ring is available for 42" high tables



Self-leveling glides

Automatically adjusts 5/16" on any uneven surface. 1-3/8" diameter nylon cap 1/2 20 stem

OTHER ACCESSORIES

- Power & Data
- Wire management

WARRANTY 10-year parts and labor



PRODUCT SPECIFICATIONS

TOP OPTIONS

ALL TOPS ARE PRE-DRILLED

TFL

- 1" low pressure, 45# core
- Low pressure laminate on both sides
- Anti-sag top support is included with tables over 60" L

HPL

- Structure: 1 1/4" thick 45# density particle board core
- .038 paper backer sheet less than 48"
- .038 phenolic backer equal or greater than 48"
- High Pressure laminate
- Balanced laminate backer
- Round and square tops over 60" are 1 piece, 66" to 96" are 2 pieces
- Rectangle, boat, oval, and racetrack tops under 96" are 1 piece. 108" to 144" tops feature 2 pieces with optional one-piece for an upcharge
- Anti-sag top support is included with tables over 60" L

WOOD VENEER

- Structure: 1 1/4" thick 45# density particle board core
- .038 paper backer sheet less than 48"
- .038 phenolic backer equal or greater than 48"
- Largest one-piece tabletop is 12' x 5'
- Biscuits and dog bones are standard for joining tops
- Long grain match is standard on one-piece tops, short grain is standard on multiple-piece tops
- Alternative stains are available for an additional fee
- Round and square tops over 60" are 1 piece, 66" to 96" are 2 pieces
- Rectangle, boat, oval, and racetrack tops over 120" are made of 2 pieces

EDGE OPTIONS

TFL

- Matching color vinyl edge

HPL

- Matching or contrasting color vinyl edge
- Wood edges
- Urethane edges

WOOD VENEER

- 8 wood edge styles stained to match the veneer
- Square corners are standard
- Rounded corners are optional