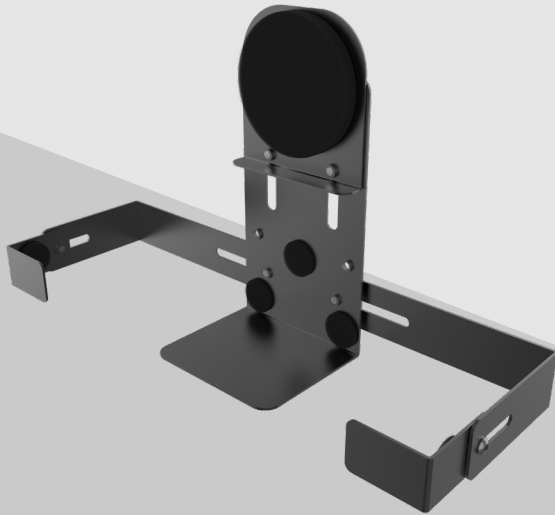




ADD-SPKB

Magnetic Speaker Holder for PAD-PARAW and Mobile Floor Stands (Black)



Magnetic Speaker Holder

This Magnetic Speaker Holder is perfect for all applications requiring a functional and durable mounting solution for audio support. This speaker holder can be mounted two ways. Clamp directly onto a mobile floor stand – or – affix to any steel surface or CTA Enclosure with the included strong magnet. This sleek design offers multiple layers of protection. Adjustable arms cradle virtually any type of speaker that fits within the parameters safely and securely. Remove the magnet, and your speaker holder is ready for attachment with a clamp to any 25-millimeter tube or CTA Mobile Floor Stand.

Features:

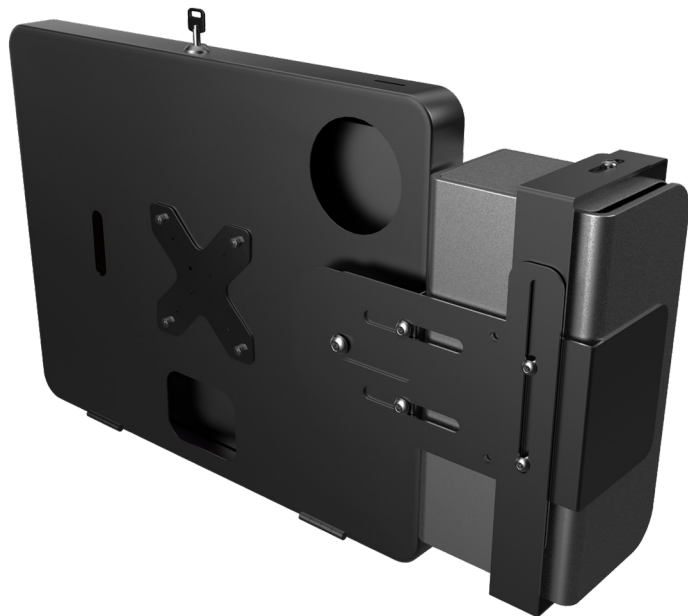
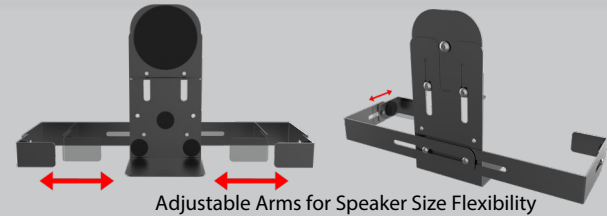
- High Quality steel magnetic speaker holder in black
- Mounts with either with magnet or clamp
- Designed to fit CTA's PAD-PARAW and 25-millimeter tube Mobile Floor Stands
- Adjustable arms fit speakers from 7-1/4" to 10-1/4"
- Pads on the interior of the adjustable arms protect speaker surface
- Detachable magnet component

Specifications:

- Dimensions: 3.8 x 8.3 x 4.5-inches
- Weight: 1.8 lbs.

Package contents:

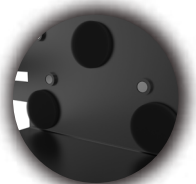
- (1) Speaker holder
- (1) Set mounting hardware



Magnet Mounting Component



Clamp Mounting Option



Protective Pads for Speakers



	Quantity	Width	Height	Depth	Weight	UPC Barcode
Packaging	-	-	-	-	-	656777019341
Master	-	-	-	-	-	10656777019348