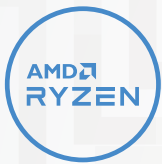


# LEGION 7 (16")

## THE WORLD'S FIRST 16" QHD GAMING LAPTOP.

Underneath the Legion 7's refined aerospace-grade aluminum Storm Grey exterior is a savage engine—the latest generation AMD processing and NVIDIA® GeForce RTX™ Graphics—AI-optimized via the Legion AI Engine with next-gen Legion Coldfront 3.0 thermals including a high-performance vapor chamber to support the highest possible resolution on a gaming laptop. The taller 16:10 aspect ratio and up-to-165 Hz refresh rates of the 16" display place you in the gaming "winning zone," raising your sightlines and strengthening your immersion, so you'll detect threats faster and dive deeper into enthralling tower-level, ray tracing-enabled cinematics and immersive 3D Nahimic audio.

### WHY YOU SHOULD BUY THE LENOVO LEGION 7 (16")



#### Escalate your game

Welcome to next-generation gaming with up to 8 high-performance cores in the AMD Ryzen™ 9 mobile processor, delivering a combination of lightning-fast frame rates with uncompromised battery life.



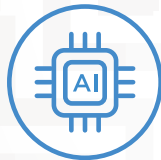
#### RTX. It's On.

NVIDIA® GeForce RTX™ 30 Series graphics bring 2<sup>nd</sup> Generation Ray Tracing, 3<sup>rd</sup> Generation AI Tensor Cores and more for a huge leap in graphical performance.



#### Set your sights higher

Cinema-like gaming moves into the next decade with the World's First 16" QHD gaming display on a laptop. Enjoy QHD Resolution, 165 Hz refresh rate, a 16:10 aspect ratio with best-in-class color accuracy and high dynamic range.



#### Boost framerates with the Lenovo Legion AI Engine

Exclusive to Lenovo Legion laptops, the Lenovo Legion AI Engine, a system of AI solutions, dynamically shifts power between the CPU and GPU for more FPS on today's top AAA titles.



[WWW.LENOVO.COM](http://WWW.LENOVO.COM)



Lenovo™

# LEGION 7 (16")

## SPECIFICATIONS

Lenovo Legion 7 16ACH-06\*

### PERFORMANCE

#### Processor

Up to AMD Ryzen™ 9 5900H

#### Operating System

Windows 10 Pro  
Windows 10 Home

#### Graphics

Up to NVIDIA® GeForce RTX™ 3080

#### Memory

3200 MHz DDR4 : Up to 32 GB

#### Storage

M.2 NVMe PCIe SSD : Up to 2 TB

#### Battery<sup>1</sup>

Up to 8 Hours (Target)<sup>2</sup>  
Rapid Charge Boost<sup>3</sup>

#### Power Adapter

300W Slim Adapter

### DESIGN

#### Display

16" QHD (2560 x 1600) IPS; 16:10 (165 Hz /  
3 ms Response Time<sup>4</sup> / 100% sRGB / 500 nits /  
Up to VESA DisplayHDR™ 400 Certified /  
Dolby Vision® Support / NVIDIA® G-SYNC™ Support)

#### Dimensions (W x D x H) (Target)<sup>5</sup>

(mm) : 356 x 261.04 x 20.1-23.5  
(inches) : 14.01" x 10.27" x 0.79"-0.93"

#### Weight (Target)<sup>5</sup>

Starting at 2.5 kg (5.5 lbs)

#### Backlit Keyboard

Corsair® iCUE RGB

#### Color

Storm Grey

### CONNECTIVITY

#### Webcam

Built-in HD Webcam (720p) with E-Shutter

#### WLAN

Killer™ WiFi AX1650 (2x2)<sup>6</sup>  
WiFi 2x2 802.11 ax<sup>7</sup>

#### Bluetooth®

Bluetooth® 5.1

#### Audio

2 x 2W Harman® Speaker with Nahimic Audio

#### Input/Output (I/O) Ports

##### Left Side

1 x USB Type-C™ (USB 3.2<sup>8</sup> Gen 2,  
DisplayPort™ 1.4)  
1 x Audio Jack

##### Right Side

1 x USB Type-C™ (USB 3.2<sup>8</sup> Gen 1)  
1 x E-Shutter Button

##### Rear

3 x USB Type-A 3.2<sup>8</sup> Gen 1 (1 x Always-On 5V)  
1 x USB Type-C™ (USB 3.2<sup>8</sup> Gen 2,  
DisplayPort™ 1.4, Power Delivery)  
1 x HDMI™ 2.1  
1 x RJ45 Ethernet  
1 x DC-In



### PRELOADED SOFTWARE

- Lenovo Vantage
- Corsair® iCue RGB Application
- Pantone X-Rite® Color Management System
- Nahimic Audio for Gamers
- Tobii Horizon

<sup>1</sup> All battery life claims are approximate and based on results using the MobileMark® 2018 v1.0.2.46 battery life benchmark test. Actual battery life will vary and depends on many factors such as product configuration and usage, software use, wireless functionality, power management settings, and screen brightness. The maximum capacity of the battery will decrease with time and use.

<sup>2</sup> Final battery life to be finalized Spring 2021 or Product SS 2021.

<sup>3</sup> 15 minute charge equals 2 hours of battery life.

<sup>4</sup> With Overdrive (OD).

<sup>5</sup> Final product spec info available Spring 2021.

<sup>6</sup> Optional.

<sup>7</sup> Base.

<sup>8</sup> The actual transfer speed of the USB 3.2 will vary and, depending on many factors, such as the processing capability of host and peripheral devices, file attributes and other factors related to system configuration and your operating environments, will be slower than a speed of 20 Gbit/s.

## LENOVO SERVICES

#### Warranty Upgrades - On-site / In-Home Service

Maximizes PC uptime and productivity by providing convenient, fast repair services in your own home.

#### Accidental Damage Protection

Avoid the hassles of unexpected repair costs. Provides coverage for non-warranted damage incurred under normal operating

conditions, such as minor spills, drops or damage to the integrated screen.

#### Warranty Extensions (1-to-3 Years Total Duration)

This fixed-term, fixed-cost service helps accurately budget for PC expenses, protect your valuable investment and potentially lower the cost of ownership over time.

## OPTIONS & ACCESSORIES



Lenovo Legion  
15.6" Recon Gaming  
Backpack



Lenovo Legion  
H500 Pro 7.1  
Surround Sound  
Gaming Headset



Lenovo Legion  
M500 RGB  
Gaming Mouse

\* Example of Lenovo catalogue naming convention



#### AMD platform codes

Bristol Ridge-L: ABL, Beema: ABM, Bristol Ridge: ABR, Carizzo-L: ACL, Carizzo: ACZ, Godavari: AGR, Kaveri: AKV, Stoney Ridge: ASR, Stoney Ridge: AST (NB), Summit Ridge: ASU, Raven Ridge: ARR, Picasso: API, Ryzen: ARE, Dali: ADA, Matisse: ARH, Xxxx: ACH.



WWW.LENOVO.COM

Lenovo reserves the right to alter product offerings and specifications at any time, without notice. Lenovo makes every effort to ensure accuracy of all information but is not liable or responsible for any editorial, photographic or typographic errors. All images are for illustration purposes only. For full Lenovo product, service and warranty specifications visit [www.lenovo.com](http://www.lenovo.com). Lenovo makes no representations or warranties regarding third party products or services. ©2020 Advanced Micro Devices, Inc. All rights reserved. AMD, the AMD Arrow logo, Athlon, Radeon and combinations thereof, are trademarks of Advanced Micro Devices, Inc. Microsoft and Windows are registered trademarks of Microsoft Corporation in the United States and/or other countries. 3DMark is a registered trademark of Futuremark Corporation. Other names are for informational purposes only and may be trademarks of their respective owners. Other company, product and service names may be trademarks or service marks of others. Visit [www.lenovo.com/lenovo/us/en/safecom/](http://www.lenovo.com/lenovo/us/en/safecom/) periodically for the latest information on safe and effective computing. ©2020 Lenovo. All rights reserved.



Lenovo™